

Converting Colors

CIELCh(70, 19.846, 64.085)

Have a look what the booklet for
CIELCh(70, 19.846, 64.085) contains.

CIELCh(70, 20.103, 64.552)	3
<i>Conversions</i>	4
<i>Details</i>	6
<i>Harmonies</i>	11
<i>Previews</i>	20
<i>Color Blindness Simulation</i>	23
<i>CSS Examples</i>	26

Color

CIELCh(70, 20.103, 64.552)

Conversions

Conversions Part 1

Format	Color
Hex	C7A58B
RGB	199, 165, 139
RGB Percent	78%, 65%, 55%
CMY	0.2209, 0.3542, 0.4561
CMYK	0.00, 0.17, 0.30, 0.22
HSL	26°, 35%, 66%
HSV	26°, 30%, 78%
XYZ	41.5023, 40.7494, 29.9872
YIQ	172.2020, 28.6100, -0.8780

Conversions

Conversions Part 2

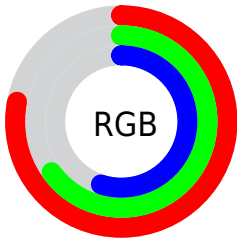
Format	Color
R _Y B	199, 185, 139
Decimal	13084043
CIE Lab	70.00, 8.64, 18.15
CIE LCh	70, 20.103, 64.552
Yxy	40.7494, 0.3698, 0.3631
Android (android.graphics.Color)	4291274123 (0xFFC7A58B)
YUV	172.2020, -16.3686, 23.5018
Hunter-Lab	63.8353, 4.3395, 16.8327

Details

The CIELCh color **70, 20.103, 64.552** is a light color, and the websafe version is hex **CC9999**. A complement of this color would be **69, 17.855, 252.306**, and the grayscale version is **70, 0.009, 296.813**.

A 20% lighter version of the original color is **90, 19.519, 65.381**, and **50, 19.990, 64.117** is the 20% darker color. If you saturate the color by 10%, you get **67, 27.568, 63.495**, and if you desaturate by 10%, it is **73, 13.054, 65.638**.

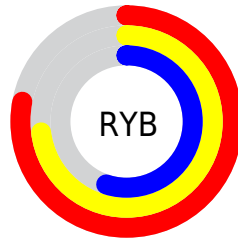
Distribution



Red (78%)

Green (65%)

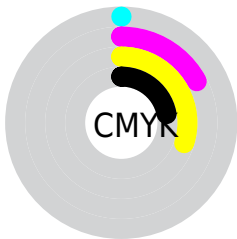
Blue (55%)



Red (78%)

Yellow (73%)

Blue (55%)

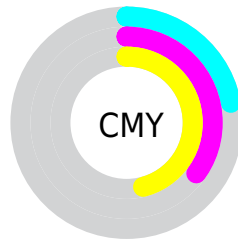


Cyan (0%)

Magenta (17%)

Yellow (30%)

Black (22%)



Cyan (22%)

Magenta (35%)

Yellow (46%)

Brightness & Saturation Gradients

These gradients show how the CIELCh color 70, 20.103, 64.552 changes by changing the brightness by 10 percent. The first figure shows a shift by +10% for each color and the second figure -10%.

Similar to the brightness gradients but the following saturation gradients show a change of the CIELCh color 70, 20.103, 64.552 by changing the saturation by 10% instead.

70, 20.103, 64.552

70, 20.103, 64.552

100, 20.103,
64.552

60, 20.103, 64.552

90, 20.103, 64.552

50, 20.103, 64.552

40, 20.103, 64.552

30, 20.103, 64.552

20, 20.103, 64.552

10, 20.103, 64.552

0, 20.103, 64.552

70, 20.103, 64.552

70, 20.103, 64.552

67, 27.568, 63.495

73, 13.054, 65.638

64, 35.443, 62.449

77, 6.400, 66.704

61, 43.667, 61.412

80, 0.109, 64.034

58, 52.066, 60.336

84, 5.856, 249.025

55, 60.249, 59.095

87, 11.530,
250.056

53, 67.445, 57.422

90, 15.878,
247.304

50, 72.972, 55.246

93, 15.682,
220.946

96, 18.416,
198.707

96, 18.506,
198.282

Harmonies

Complementary

The Complementary color scheme is a pair of colors which are on the opposite of each other on the color wheel.



70, 20.103, 64.552



69, 17.855, 252.306

Rectangle

The Rectangle color scheme consists of four colors that form a rectangle on the color wheel.



70, 20.103, 64.552



70, 20.103, 114.552



70, 20.103, 244.552



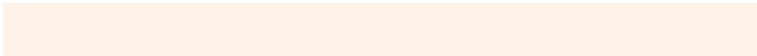
70, 20.103, 294.552

Sweetspot

The Sweet Spot groups the original color and five complimentary colors.



70, 20.103, 64.560



96, 6.902, 66.812



65, 29.340, 342.805



51, 4.817, 66.660



0, 0.000, 0.000



53, 0.007, 296.813

Same Dimension

The Same Dimension uses a secret algorithm to generate beautiful new colors.



70, 20.103, 64.560



85, 29.916, 63.882



78, 29.626, 104.272



40, 3.557, 66.787



42, 62.803, 55.826



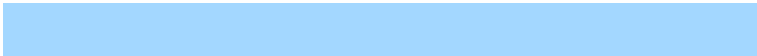
7, 13.021, 49.916

Inverse Universe

The Inverse Universe completely reimagines the original color for something new.



69, 17.855, 252.306



84, 25.822, 253.587



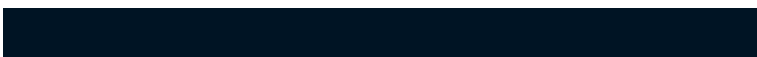
61, 31.546, 291.231



40, 3.446, 249.073



39, 44.799, 276.220



6, 12.971, 263.755

Previews

White Background



This preview shows how the CIELCh color 70, 20.103, 64.552 looks on a white background.

Color Contrast Check

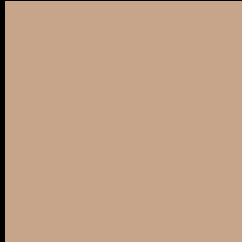
Large Text (above 18pt) WCAG AA × Fail

Any Text WCAG AA × Fail

Large Text (above 18pt) WCAG AAA × Fail

Any Text WCAG AAA × Fail

Black Background



This preview shows how the CIELCh color 70, 20.103, 64.552 looks on a black background.

Color Contrast Check

Large Text (above 18pt) WCAG AA ✓ Pass

Any Text WCAG AA ✓ Pass

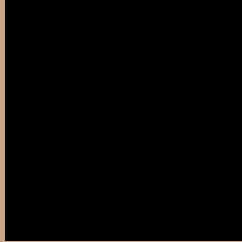
Large Text (above 18pt) WCAG AAA ✓ Pass

Any Text WCAG AAA ✓ Pass

If you want to check with other color combinations, try the [Color Contrast Checker](#).

CIELCh 70, 20.103, 64.552

Background



This preview shows how black text looks on a background with the CIELCh color 70, 20.103, 64.552.



This preview shows how white text looks on a background with the CIELCh color 70, 20.103, 64.552.

Color Blindness Simulation

Color vision deficiency is a very complex topic, and I could not describe the different causes any better than Wikipedia does, so if you want to learn more, you should check out their [article about color blindness](#).

Dichromacy



Original Color

70, 20.103, 64.552

Protanopia

70, 16.290, 94.217

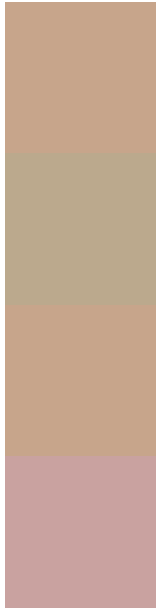
Deuteranopia

70, 20.103, 64.552



Tritanopia
70, 17.416, 359.076

Trichromacy



Original Color
70, 20.103, 64.552

Protanomaly
70, 16.960, 83.036

Deuteranomaly
70, 20.103, 64.552

Tritanomaly
70, 15.476, 24.764

Monochromacy



Original Color
70, 20.103, 64.552

Achromatopsia
70, 0.009, 296.813

Achromatomaly
70, 7.048, 63.690

CSS Examples

Text

The CSS property to change the color of the text to CIELCh 70, 20.103, 64.552 is called "color". The color property can be set on classes, ids or directly on the HTML element.

This example shows how text in the color `rgb(199, 165, 139)` looks like.

```
.text, #text, p{  
    color:rgb(199, 165, 139)  
}
```

If you want to add a text shadow in that color use the text-shadow property, you can generate a text shadow directly with our [CSS Text Shadow Generator](#).

Here you see how black text with a 4 pixel rgb(199, 165, 139) colored shadow looks like.

```
.shadow{ text-shadow: 4px 4px 2px rgb(199, 165, 139) }
```

Border

The CSS property to change the border of an element to CIELCh 70, 20.103, 64.552 is called "border". The border property can be set on classes, ids or directly on the HTML element.

This example shows the color as border, it can be applied via the CSS property "border" or "border-color".

```
.border, #border, table{ border:4px solid rgb(199, 165, 139) }
```

If only the border color should be changed use the property `border-color`.

```
.border{ border-color:rgb(199, 165, 139) }
```

If you want to add a box shadow in that color use:

Here you see how a box with a 4 pixel `rgb(199, 165, 139)` colored shadow looks like.

```
.boxshadow{ -moz-box-shadow:4px 4px 4px  
4px rgb(199, 165, 139); -webkit-box-  
shadow:4px 4px 4px 4px rgb(199, 165, 139);  
box-shadow:4px 4px 4px 4px rgb(199, 165,  
139) }
```

Background

The CSS property to change the background color of an element to CIELCh 70, 20.103, 64.552 is called "background". The background property can be set on classes, ids or directly on the HTML element.

```
.background, #background, body{  
background: rgb(199, 165, 139) }
```

If only the background color should be changed can be used:

```
.background{ background-color: rgb(199,  
165, 139) }
```

This example shows the color as background, it is applied via the CSS property "background".

To optimize and compress your CSS code, you can use our [online CSS compressor and optimizer](#) based on csstidy. If you want to create a linear or radial gradient as background or border, check our [CSS Gradient Generator](#).

Hey! You found this booklet interesting? Support Converting Colors with the new Membership Option!

The pro membership hides all ads, plus gives you double the colors in the color bucket, and more awesome pro features!

[Learn more, Memberships starting at \\$2.50/m!](#)

**Follow me
on Twitter!**

@ConvertingColor