

Converting Colors

CIELCh(70, 19.866, 66.377)

Have a look what the booklet for
CIELCh(70, 19.866, 66.377) contains.

CIELCh(70, 19.803, 65.394)	3
<i>Conversions</i>	4
<i>Details</i>	6
<i>Harmonies</i>	11
<i>Previews</i>	20
<i>Color Blindness Simulation</i>	23
<i>CSS Examples</i>	26

Color

CIELCh(70, 19.803, 65.394)

Conversions

Conversions Part 1

Format	Color
Hex	C6A58B
RGB	198, 165, 139
RGB Percent	78%, 65%, 55%
CMY	0.2238, 0.3531, 0.4551
CMYK	0.00, 0.17, 0.30, 0.22
HSL	26°, 34%, 66%
HSV	26°, 30%, 78%
XYZ	41.3736, 40.7494, 30.0895
YIQ	171.9030, 28.0140, -1.0900

Conversions

Conversions Part 2

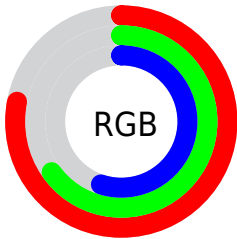
Format	Color
R _Y B	198, 185, 139
Decimal	13018507
CIE Lab	70.00, 8.25, 18.00
CIE LCh	70, 19.803, 65.394
Yxy	40.7494, 0.3687, 0.3631
Android (android.graphics.Color)	4291208587 (0xFFC6A58B)
YUV	171.9030, -16.2212, 22.8871
Hunter-Lab	63.8353, 3.9796, 16.7377

Details

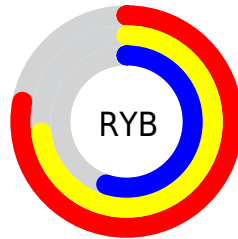
The CIELCh color **70, 19.803, 65.394** is a light color, and the websafe version is hex **CC9999**. A complement of this color would be **69, 17.687, 253.134**, and the grayscale version is **70, 0.009, 296.813**.

A 20% lighter version of the original color is **90, 19.519, 65.381**, and **50, 19.660, 65.028** is the 20% darker color. If you saturate the color by 10%, you get **67, 27.226, 64.310**, and if you desaturate by 10%, it is **73, 12.785, 66.502**.

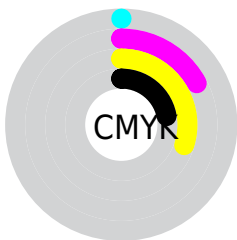
Distribution



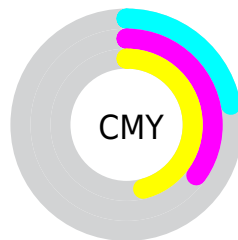
- Red (78%)
- Green (65%)
- Blue (55%)



- Red (78%)
- Yellow (73%)
- Blue (55%)



- Cyan (0%)
- Magenta (17%)
- Yellow (30%)
- Black (22%)



- Cyan (22%)
- Magenta (35%)
- Yellow (46%)

Brightness & Saturation Gradients

These gradients show how the CIELCh color 70, 19.803, 65.394 changes by changing the brightness by 10 percent. The first figure shows a shift by +10% for each color and the second figure -10%.

Similar to the brightness gradients but the following saturation gradients show a change of the CIELCh color 70, 19.803, 65.394 by changing the saturation by 10% instead.

■ 70, 19.803, 65.394

■ 70, 19.803, 65.394

■ 100, 19.803,
65.394

■ 60, 19.803, 65.394

■ 90, 19.803, 65.394

■ 50, 19.803, 65.394

■ 40, 19.803, 65.394

■ 30, 19.803, 65.394

■ 20, 19.803, 65.394

■ 10, 19.803, 65.394

■ 0, 19.803, 65.394

■ 70, 19.803, 65.394

■ 70, 19.803, 65.394

■ 67, 27.226, 64.310

■ 73, 12.785, 66.502

64, 35.048, 63.235

77, 6.152, 67.585

61, 43.210, 62.164

80, 0.126, 252.017

58, 51.541, 61.051

83, 6.086, 249.933

55, 59.659, 59.777

87, 11.763,
250.978

53, 66.815, 58.082

90, 16.171,
248.599

51, 72.380, 55.823

51, 72.492, 55.786

93, 15.769,
222.997

96, 18.228,
200.726

96, 18.728,
198.268

Harmonies

Complementary

The Complementary color scheme is a pair of colors which are on the opposite of each other on the color wheel.



70, 19.803, 65.394



69, 17.687, 253.134

Rectangle

The Rectangle color scheme consists of four colors that form a rectangle on the color wheel.



70, 19.803, 65.394



70, 19.803, 115.394



70, 19.803, 245.394



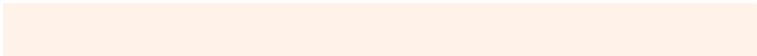
70, 19.803, 295.394

Sweetspot

The Sweet Spot groups the original color and five complimentary colors.



70, 19.803, 65.402



96, 6.924, 67.655



65, 28.879, 342.766



51, 4.832, 67.500



0, 0.000, 0.000



53, 0.007, 296.813

Same Dimension

The Same Dimension uses a secret algorithm to generate beautiful new colors.



70, 19.803, 65.402



85, 29.961, 64.665



78, 29.167, 104.312



40, 3.568, 67.629



42, 62.574, 56.358



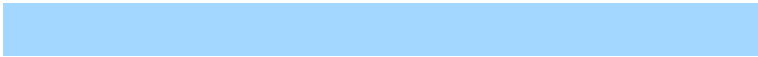
7, 13.005, 50.694

Inverse Universe

The Inverse Universe completely reimagines the original color for something new.



69, 17.687, 253.134



84, 25.987, 254.499



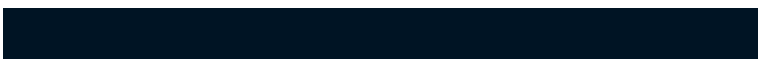
61, 31.027, 291.168



40, 3.461, 249.942



38, 45.468, 277.116



6, 13.083, 264.560

Previews

White Background



This preview shows how the CIELCh color 70, 19.803, 65.394 looks on a white background.

Color Contrast Check

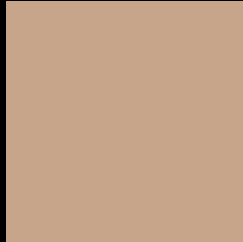
Large Text (above 18pt) WCAG AA × Fail

Any Text WCAG AA × Fail

Large Text (above 18pt) WCAG AAA × Fail

Any Text WCAG AAA × Fail

Black Background



This preview shows how the CIELCh color 70, 19.803, 65.394 looks on a black background.

Color Contrast Check

Large Text (above 18pt) WCAG AA ✓ Pass

Any Text WCAG AA ✓ Pass

Large Text (above 18pt) WCAG AAA ✓ Pass

Any Text WCAG AAA ✓ Pass

If you want to check with other color combinations, try the [Color Contrast Checker](#).

CIELCh 70, 19.803, 65.394

Background



This preview shows how black text looks on a background with the CIELCh color 70, 19.803, 65.394.



This preview shows how white text looks on a background with the CIELCh color 70, 19.803, 65.394.

Color Blindness Simulation

Color vision deficiency is a very complex topic, and I could not describe the different causes any better than Wikipedia does, so if you want to learn more, you should check out their [article about color blindness](#).

Dichromacy



Original Color

70, 19.803, 65.394

Protanopia

70, 16.290, 94.217

Deuteranopia

70, 20.103, 64.552



Tritanopia
70, 17.596, 357.407

Trichromacy



Original Color
70, 19.803, 65.394

Protanomaly
70, 16.960, 83.036

Deuteranomaly
70, 20.103, 64.552

Tritanomaly
70, 15.407, 22.774

Monochromacy



Original Color
70, 19.803, 65.394

Achromatopsia
70, 0.009, 296.813

Achromatomaly
70, 6.769, 66.003

CSS Examples

Text

The CSS property to change the color of the text to CIELCh 70, 19.803, 65.394 is called "color". The color property can be set on classes, ids or directly on the HTML element.

This example shows how text in the color `rgb(198, 165, 139)` looks like.

```
.text, #text, p{  
    color:rgb(198, 165, 139)  
}
```

If you want to add a text shadow in that color use the text-shadow property, you can generate a text shadow directly with our [CSS Text Shadow Generator](#).

Here you see how black text with a 4 pixel rgb(198, 165, 139) colored shadow looks like.

```
.shadow{ text-shadow: 4px 4px 2px rgb(198, 165, 139) }
```

Border

The CSS property to change the border of an element to CIELCh 70, 19.803, 65.394 is called "border". The border property can be set on classes, ids or directly on the HTML element.

This example shows the color as border, it can be applied via the CSS property "border" or "border-color".

```
.border, #border, table{ border:4px solid rgb(198, 165, 139) }
```

If only the border color should be changed use the property `border-color`.

```
.border{ border-color:rgb(198, 165, 139) }
```

If you want to add a box shadow in that color use:

Here you see how a box with a 4 pixel `rgb(198, 165, 139)` colored shadow looks like.

```
.boxshadow{ -moz-box-shadow:4px 4px 4px  
4px rgb(198, 165, 139); -webkit-box-  
shadow:4px 4px 4px 4px rgb(198, 165, 139);  
box-shadow:4px 4px 4px 4px rgb(198, 165,  
139) }
```

Background

The CSS property to change the background color of an element to CIELCh 70, 19.803, 65.394 is called "background". The background property can be set on classes, ids or directly on the HTML element.

```
.background, #background, body{  
background: rgb(198, 165, 139) }
```

If only the background color should be changed can be used:

```
.background{ background-color: rgb(198,  
165, 139) }
```

This example shows the color as background, it is applied via the CSS property "background".

To optimize and compress your CSS code, you can use our [online CSS compressor and optimizer](#) based on csstidy. If you want to create a linear or radial gradient as background or border, check our [CSS Gradient Generator](#).

Hey! You found this booklet interesting? Support Converting Colors with the new Membership Option!

The pro membership hides all ads, plus gives you double the colors in the color bucket, and more awesome pro features!

[Learn more, Memberships starting at \\$2.50/m!](#)

**Follow me
on Twitter!**

@ConvertingColor