

Converting Colors

CIELCh(70, 19.965, 60.899)

Have a look what the booklet for
CIELCh(70, 19.965, 60.899) contains.

CIELCh(70, 19.952, 60.887)	3
<i>Conversions</i>	4
<i>Details</i>	6
<i>Harmonies</i>	11
<i>Previews</i>	20
<i>Color Blindness Simulation</i>	23
<i>CSS Examples</i>	26

Color

CIELCh(70, 19.952, 60.887)

Conversions

Conversions Part 1

Format	Color
Hex	C8A48C
RGB	200, 164, 140
RGB Percent	78%, 64%, 55%
CMY	0.2155, 0.3567, 0.4508
CMYK	0.00, 0.18, 0.30, 0.22
HSL	24°, 35%, 67%
HSV	24°, 30%, 78%
XYZ	41.8542, 40.7494, 30.4886
YIQ	172.0280, 29.1600, 0.1680

Conversions

Conversions Part 2

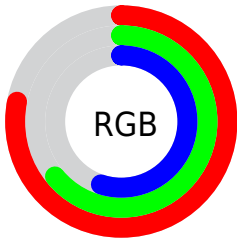
Format	Color
R _Y B	200, 180, 140
Decimal	13149324
CIE Lab	70.00, 9.71, 17.43
CIE LCh	70, 19.952, 60.887
Yxy	40.7494, 0.3701, 0.3603
Android (android.graphics.Color)	4291339404 (0xFFC8A48C)
YUV	172.0280, -15.7898, 24.5314
Hunter-Lab	63.8353, 5.3236, 16.3670

Details

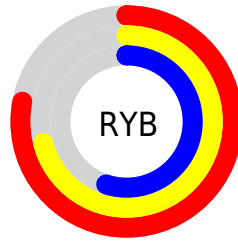
The CIELCh color $70, 19.952, 60.887$ is a light color, and the websafe version is hex `CC9999`. A complement of this color would be $70, 17.429, 248.036$, and the grayscale version is $70, 0.009, 296.813$.

A 20% lighter version of the original color is $90, 19.057, 62.550$, and $50, 19.856, 60.229$ is the 20% darker color. If you saturate the color by 10%, you get $67, 27.482, 59.961$, and if you desaturate by 10%, it is $73, 12.879, 61.859$.

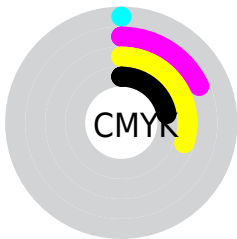
Distribution



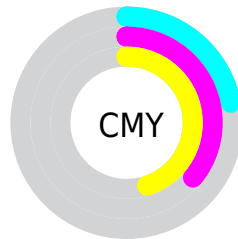
- Red (78%)
- Green (64%)
- Blue (55%)



- Red (78%)
- Yellow (71%)
- Blue (55%)



- Cyan (0%)
- Magenta (18%)
- Yellow (30%)
- Black (22%)



- Cyan (22%)
- Magenta (36%)
- Yellow (45%)

Brightness & Saturation Gradients

These gradients show how the CIELCh color 70, 19.952, 60.887 changes by changing the brightness by 10 percent. The first figure shows a shift by +10% for each color and the second figure -10%.

Similar to the brightness gradients but the following saturation gradients show a change of the CIELCh color 70, 19.952, 60.887 by changing the saturation by 10% instead.

70, 19.952, 60.887

70, 19.952, 60.887

100, 19.952,
60.887

60, 19.952, 60.887

90, 19.952, 60.887

50, 19.952, 60.887

40, 19.952, 60.887

30, 19.952, 60.887

20, 19.952, 60.887

10, 19.952, 60.887

0, 19.952, 60.887

70, 19.952, 60.887

70, 19.952, 60.887

67, 27.482, 59.961

73, 12.879, 61.859

63, 35.472, 59.067

77, 6.238, 62.823

60, 43.869, 58.206

81, 0.012, 282.739

57, 52.514, 57.334

84, 5.903, 244.993

54, 61.030, 56.326

88, 11.484,
245.958

52, 68.644, 54.905

91, 15.119,
239.468

50, 74.676, 52.928

50, 74.680, 52.927

95, 16.084,
211.355

96, 18.085,
198.309

Harmonies

Complementary

The Complementary color scheme is a pair of colors which are on the opposite of each other on the color wheel.



70, 19.952, 60.887



70, 17.429, 248.036

Rectangle

The Rectangle color scheme consists of four colors that form a rectangle on the color wheel.



70, 19.952, 60.887



70, 19.952, 110.887



70, 19.952, 240.887



70, 19.952, 290.887

Sweetspot

The Sweet Spot groups the original color and five complimentary colors.



70, 19.952, 60.895



96, 6.822, 62.903



65, 29.955, 341.086



51, 4.762, 62.765



0, 0.000, 0.000



53, 0.007, 296.813

Same Dimension

The Same Dimension uses a secret algorithm to generate beautiful new colors.



70, 19.952, 60.895



85, 29.786, 60.281



78, 28.676, 102.630



40, 3.516, 62.880



41, 63.900, 53.511



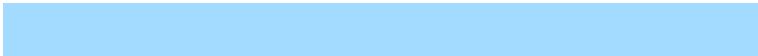
6, 13.119, 46.532

Inverse Universe

The Inverse Universe completely reimagines the original color for something new.



70, 17.429, 248.036



85, 25.152, 249.294



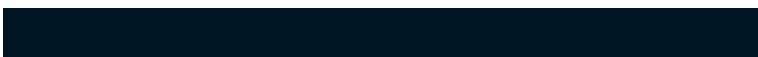
62, 30.342, 289.732



40, 3.389, 245.019



40, 41.886, 271.842



6, 12.485, 259.788

Previews

White Background



This preview shows how the CIELCh color 70, 19.952, 60.887 looks on a white background.

Color Contrast Check

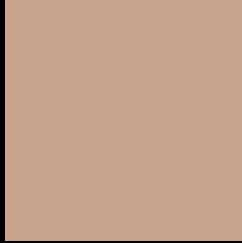
Large Text (above 18pt) WCAG AA × Fail

Any Text WCAG AA × Fail

Large Text (above 18pt) WCAG AAA × Fail

Any Text WCAG AAA × Fail

Black Background



This preview shows how the CIELCh color 70, 19.952, 60.887 looks on a black background.

Color Contrast Check

Large Text (above 18pt) WCAG AA ✓ Pass

Any Text WCAG AA ✓ Pass

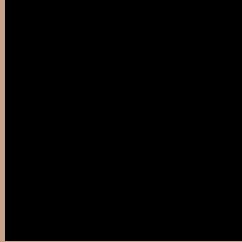
Large Text (above 18pt) WCAG AAA ✓ Pass

Any Text WCAG AAA ✓ Pass

If you want to check with other color combinations, try the [Color Contrast Checker](#).

CIELCh 70, 19.952, 60.887

Background



This preview shows how black text looks on a background with the CIELCh color 70, 19.952, 60.887.



This preview shows how white text looks on a background with the CIELCh color 70, 19.952, 60.887.

Color Blindness Simulation

Color vision deficiency is a very complex topic, and I could not describe the different causes any better than Wikipedia does, so if you want to learn more, you should check out their [article about color blindness](#).

Dichromacy





Tritanopia
70, 18.144, 0.098

Trichromacy



Original Color
70, 19.952, 60.887

Protanomaly
70, 16.392, 78.991

Deuteranomaly
70, 19.694, 63.550

Tritanomaly
70, 16.644, 22.746

Monochromacy



Original Color
70, 19.952, 60.887

Achromatopsia
70, 0.009, 296.813

Achromatomaly
70, 7.048, 63.690

CSS Examples

Text

The CSS property to change the color of the text to CIELCh 70, 19.952, 60.887 is called "color". The color property can be set on classes, ids or directly on the HTML element.

This example shows how text in the color `rgb(200, 164, 140)` looks like.

```
.text, #text, p{  
    color:rgb(200, 164, 140)  
}
```

If you want to add a text shadow in that color use the text-shadow property, you can generate a text shadow directly with our [CSS Text Shadow Generator](#).

Here you see how black text with a 4 pixel rgb(200, 164, 140) colored shadow looks like.

```
.shadow{ text-shadow: 4px 4px 2px rgb(200, 164, 140) }
```

Border

The CSS property to change the border of an element to CIELCh 70, 19.952, 60.887 is called "border". The border property can be set on classes, ids or directly on the HTML element.

This example shows the color as border, it can be applied via the CSS property "border" or "border-color".

```
.border, #border, table{ border:4px solid rgb(200, 164, 140) }
```

If only the border color should be changed use the property `border-color`.

```
.border{ border-color:rgb(200, 164, 140) }
```

If you want to add a box shadow in that color use:

Here you see how a box with a 4 pixel `rgb(200, 164, 140)` colored shadow looks like.

```
.boxshadow{ -moz-box-shadow:4px 4px 4px  
4px rgb(200, 164, 140); -webkit-box-  
shadow:4px 4px 4px 4px rgb(200, 164, 140);  
box-shadow:4px 4px 4px 4px rgb(200, 164,  
140) }
```

Background

The CSS property to change the background color of an element to CIELCh 70, 19.952, 60.887 is called "background". The background property can be set on classes, ids or directly on the HTML element.

```
.background, #background, body{  
background: rgb(200, 164, 140) }
```

If only the background color should be changed can be used:

```
.background{ background-color: rgb(200,  
164, 140) }
```

This example shows the color as background, it is applied via the CSS property "background".

To optimize and compress your CSS code, you can use our [online CSS compressor and optimizer](#) based on csstidy. If you want to create a linear or radial gradient as background or border, check our [CSS Gradient Generator](#).

Hey! You found this booklet interesting? Support Converting Colors with the new Membership Option!

The pro membership hides all ads, plus gives you double the colors in the color bucket, and more awesome pro features!

[Learn more, Memberships starting at \\$2.50/m!](#)

**Follow me
on Twitter!**

@ConvertingColor