

Converting Colors

CIELCh(70, 22.065, 31.365)

Have a look what the booklet for
CIELCh(70, 22.065, 31.365) contains.

CIELCh(70, 22.298, 31.066)	3
<i>Conversions</i>	4
<i>Details</i>	6
<i>Harmonies</i>	11
<i>Previews</i>	20
<i>Color Blindness Simulation</i>	23
<i>CSS Examples</i>	26

Color

CIELCh(70, 22.298, 31.066)

Conversions

Conversions Part 1

Format	Color
Hex	D49E97
RGB	212, 158, 151
RGB Percent	83%, 62%, 59%
CMY	0.1681, 0.3799, 0.4074
CMYK	0.00, 0.25, 0.29, 0.17
HSL	7°, 42%, 71%
HSV	7°, 29%, 83%
XYZ	45.0318, 40.7494, 34.8208
YIQ	173.3480, 34.4310, 9.2710

Conversions

Conversions Part 2

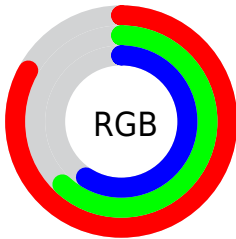
Format	Color
R _Y B	212, 159, 151
Decimal	13934231
CIE Lab	70.00, 19.10, 11.51
CIE LCh	70, 22.298, 31.066
Yxy	40.7494, 0.3734, 0.3379
Android (android.graphics.Color)	4292124311 (0xFFD49E97)
YUV	173.3480, -11.0176, 33.8978
Hunter-Lab	63.8353, 14.2088, 12.3433

Details

The CIELCh color **70, 22.298, 31.066** is a light color, and the websafe version is hex **CC9999**. A complement of this color would be **79, 18.188, 210.126**, and the grayscale version is **71, 0.009, 296.813**.

A 20% lighter version of the original color is **89, 16.435, 35.020**, and **50, 22.373, 30.846** is the 20% darker color. If you saturate the color by 10%, you get **65, 31.298, 31.795**, and if you desaturate by 10%, it is **75, 13.952, 30.567**.

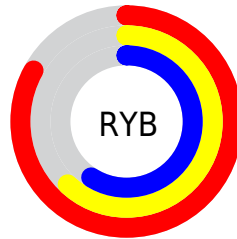
Distribution



Red (83%)

Green (62%)

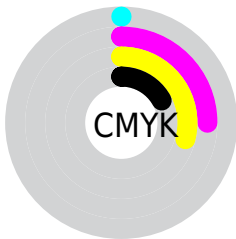
Blue (59%)



Red (83%)

Yellow (62%)

Blue (59%)

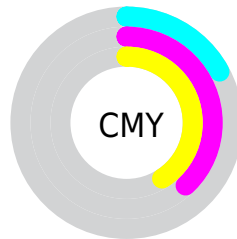


Cyan (0%)

Magenta (25%)

Yellow (29%)

Black (17%)



Cyan (17%)

Magenta (38%)

Yellow (41%)

Brightness & Saturation Gradients

These gradients show how the CIELCh color 70, 22.298, 31.066 changes by changing the brightness by 10 percent. The first figure shows a shift by +10% for each color and the second figure -10%.

Similar to the brightness gradients but the following saturation gradients show a change of the CIELCh color 70, 22.298, 31.066 by changing the saturation by 10% instead.

70, 22.298, 31.066

70, 22.298, 31.066

100, 22.298,
31.066

60, 22.298, 31.066

90, 22.298, 31.066

50, 22.298, 31.066

40, 22.298, 31.066

30, 22.298, 31.066

20, 22.298, 31.066

10, 22.298, 31.066

0, 22.298, 31.066

70, 22.298, 31.066

70, 22.298, 31.066

65, 31.298, 31.795

75, 13.952, 30.567

61, 40.926, 32.799

80, 6.250, 30.198

56, 51.077, 34.144

86, 0.850, 210.788

53, 61.545, 35.858

91, 7.400, 210.095

49, 71.925, 37.864

96, 13.371,
205.228

47, 81.365, 39.811

97, 14.326,
198.551

45, 88.385, 41.080

45, 89.173, 41.290

Harmonies

Complementary

The Complementary color scheme is a pair of colors which are on the opposite of each other on the color wheel.



70, 22.298, 31.066



79, 18.188, 210.126

Rectangle

The Rectangle color scheme consists of four colors that form a rectangle on the color wheel.



70, 22.298, 31.066



70, 22.298, 81.066



70, 22.298, 211.066



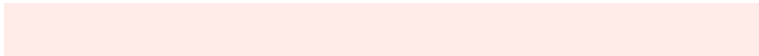
70, 22.298, 261.066

Sweetspot

The Sweet Spot groups the original color and five complimentary colors.



70, 22.296, 31.072



94, 7.465, 30.210



70, 36.983, 328.943



50, 5.219, 30.261



0, 0.000, 0.000



53, 0.007, 296.813

Same Dimension

The Same Dimension uses a secret algorithm to generate beautiful new colors.



70, 22.296, 31.072



79, 32.369, 31.521



77, 21.964, 81.659



42, 4.092, 30.222



36, 75.589, 41.497



6, 20.443, 25.700

Inverse Universe

The Inverse Universe completely reimagines the original color for something new.



79, 18.188, 210.126



92, 25.009, 210.264



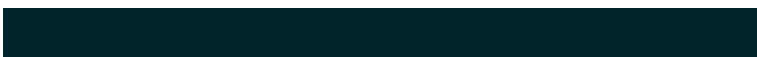
71, 21.262, 269.939



44, 3.850, 210.106



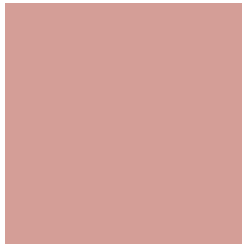
57, 32.744, 217.081



13, 13.034, 212.864

Previews

White Background



This preview shows how the CIELCh color 70, 22.298, 31.066 looks on a white background.

Color Contrast Check

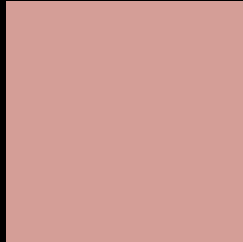
Large Text (above 18pt) WCAG AA × Fail

Any Text WCAG AA × Fail

Large Text (above 18pt) WCAG AAA × Fail

Any Text WCAG AAA × Fail

Black Background



This preview shows how the CIE LCh color 70, 22.298, 31.066 looks on a black background.

Color Contrast Check

Large Text (above 18pt) WCAG AA ✓ Pass

Any Text WCAG AA ✓ Pass

Large Text (above 18pt) WCAG AAA ✓ Pass

Any Text WCAG AAA ✓ Pass

If you want to check with other color combinations, try the [Color Contrast Checker](#).

CIELCh 70, 22.298, 31.066

Background



This preview shows how black text looks on a background with the CIELCh color 70, 22.298, 31.066.

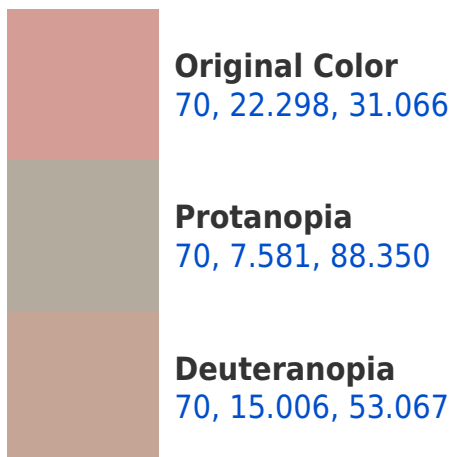


This preview shows how white text looks on a background with the CIELCh color 70, 22.298, 31.066.

Color Blindness Simulation

Color vision deficiency is a very complex topic, and I could not describe the different causes any better than Wikipedia does, so if you want to learn more, you should check out their [article about color blindness](#).

Dichromacy





Tritanopia
70, 23.479, 5.666

Trichromacy



Original Color
70, 22.298, 31.066

Protanomaly
70, 11.287, 52.028

Deuteranomaly
70, 17.389, 44.467

Tritanomaly
70, 22.283, 14.569

Monochromacy



Original Color
70, 22.298, 31.066

Achromatopsia
71, 0.009, 296.813

Achromatomaly
70, 7.538, 32.448

CSS Examples

Text

The CSS property to change the color of the text to CIELCh 70, 22.298, 31.066 is called "color". The color property can be set on classes, ids or directly on the HTML element.

This example shows how text in the color `rgb(212, 158, 151)` looks like.

```
.text, #text, p{  
    color:rgb(212, 158, 151)  
}
```

If you want to add a text shadow in that color use the text-shadow property, you can generate a text shadow directly with our [CSS Text Shadow Generator](#).

Here you see how black text with a 4 pixel rgb(212, 158, 151) colored shadow looks like.

```
.shadow{ text-shadow: 4px 4px 2px rgb(212, 158, 151) }
```

Border

The CSS property to change the border of an element to CIELCh 70, 22.298, 31.066 is called "border". The border property can be set on classes, ids or directly on the HTML element.

This example shows the color as border, it can be applied via the CSS property "border" or "border-color".

```
.border, #border, table{ border:4px solid rgb(212, 158, 151) }
```

If only the border color should be changed use the property `border-color`.

```
.border{ border-color:rgb(212, 158, 151) }
```

If you want to add a box shadow in that color use:

Here you see how a box with a 4 pixel `rgb(212, 158, 151)` colored shadow looks like.

```
.boxshadow{ -moz-box-shadow:4px 4px 4px  
4px rgb(212, 158, 151); -webkit-box-  
shadow:4px 4px 4px 4px rgb(212, 158, 151);  
box-shadow:4px 4px 4px 4px rgb(212, 158,  
151) }
```

Background

The CSS property to change the background color of an element to CIELCh 70, 22.298, 31.066 is called "background". The background property can be set on classes, ids or directly on the HTML element.

```
.background, #background, body{  
background: rgb(212, 158, 151) }
```

If only the background color should be changed can be used:

```
.background{ background-color: rgb(212,  
158, 151) }
```

This example shows the color as background, it is applied via the CSS property "background".

To optimize and compress your CSS code, you can use our [online CSS compressor and optimizer](#) based on csstidy. If you want to create a linear or radial gradient as background or border, check our [CSS Gradient Generator](#).

Hey! You found this booklet interesting? Support Converting Colors with the new Membership Option!

The pro membership hides all ads, plus gives you double the colors in the color bucket, and more awesome pro features!

[Learn more, Memberships starting at \\$2.50/m!](#)

**Follow me
on Twitter!**

@ConvertingColor