

Converting Colors

CIELCh(70, 22.460, 40.718)

Have a look what the booklet for
CIELCh(70, 22.460, 40.718) contains.

CIELCh(70, 22.431, 40.783)	3
<i>Conversions</i>	4
<i>Details</i>	6
<i>Harmonies</i>	11
<i>Previews</i>	20
<i>Color Blindness Simulation</i>	23
<i>CSS Examples</i>	26

Color

CIELCh(70, 22.431, 40.783)

Conversions

Conversions Part 1

Format	Color
Hex	D29F91
RGB	210, 159, 145
RGB Percent	82%, 62%, 57%
CMY	0.1748, 0.3749, 0.4299
CMYK	0.00, 0.24, 0.31, 0.17
HSL	13°, 42%, 70%
HSV	13°, 31%, 83%
XYZ	44.3026, 40.7494, 32.4731
YIQ	172.6530, 34.8900, 6.4580

Conversions

Conversions Part 2

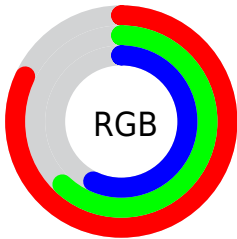
Format	Color
R _Y B	210, 163, 145
Decimal	13803409
CIE Lab	70.00, 16.98, 14.65
CIE LCh	70, 22.431, 40.783
Yxy	40.7494, 0.3770, 0.3467
Android (android.graphics.Color)	4291993489 (0xFFD29F91)
YUV	172.6530, -13.6329, 32.7533
Hunter-Lab	63.8353, 12.1698, 14.5238

Details

The CIELCh color **70, 22.431, 40.783** is a light color, and the websafe version is hex **CC9999**. A complement of this color would be **76, 18.148, 223.007**, and the grayscale version is **71, 0.009, 296.813**.

A 20% lighter version of the original color is **89, 17.551, 46.533**, and **50, 22.310, 39.688** is the 20% darker color. If you saturate the color by 10%, you get **66, 30.943, 40.921**, and if you desaturate by 10%, it is **75, 14.555, 40.810**.

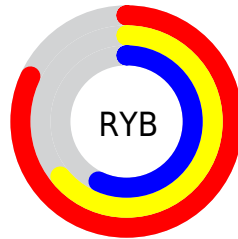
Distribution



Red (82%)

Green (62%)

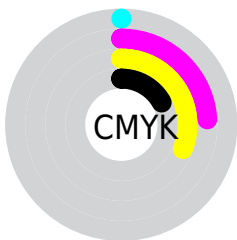
Blue (57%)



Red (82%)

Yellow (64%)

Blue (57%)

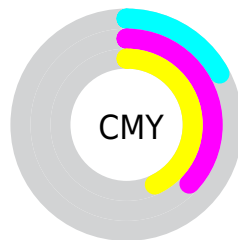


Cyan (0%)

Magenta (24%)

Yellow (31%)

Black (17%)



Cyan (17%)

Magenta (37%)

Yellow (43%)

Brightness & Saturation Gradients

These gradients show how the CIELCh color 70, 22.431, 40.783 changes by changing the brightness by 10 percent. The first figure shows a shift by +10% for each color and the second figure -10%.

Similar to the brightness gradients but the following saturation gradients show a change of the CIELCh color 70, 22.431, 40.783 by changing the saturation by 10% instead.

70, 22.431, 40.783

70, 22.431, 40.783

100, 22.431,
40.783

60, 22.431, 40.783

90, 22.431, 40.783

50, 22.431, 40.783

40, 22.431, 40.783

30, 22.431, 40.783

20, 22.431, 40.783

10, 22.431, 40.783

0, 22.431, 40.783

70, 22.431, 40.783

70, 22.431, 40.783

66, 30.943, 40.921

75, 14.555, 40.810

61, 40.092, 41.243

79, 7.287, 40.931

58, 49.810, 41.779

84, 0.580, 40.296

54, 59.916, 42.511

89, 5.622, 221.684

51, 69.987, 43.314

94, 11.376,
222.006

48, 79.068, 43.812

97, 14.868,
198.515

47, 85.530, 43.775

Harmonies

Complementary

The Complementary color scheme is a pair of colors which are on the opposite of each other on the color wheel.



70, 22.431, 40.783



76, 18.148, 223.007

Rectangle

The Rectangle color scheme consists of four colors that form a rectangle on the color wheel.



70, 22.431, 40.783



70, 22.431, 90.783



70, 22.431, 220.783



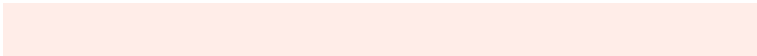
70, 22.431, 270.783

Sweetspot

The Sweet Spot groups the original color and five complimentary colors.



70, 22.430, 40.790



95, 6.976, 40.955



68, 36.830, 332.515



50, 4.877, 40.936



0, 0.000, 0.000



53, 0.007, 296.813

Same Dimension

The Same Dimension uses a secret algorithm to generate beautiful new colors.



70, 22.430, 40.790



80, 32.242, 40.856



78, 25.517, 89.789



42, 3.749, 40.951



37, 72.040, 44.179



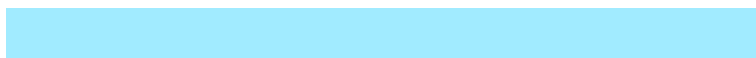
6, 17.625, 31.421

Inverse Universe

The Inverse Universe completely reimagines the original color for something new.



76, 18.148, 223.007



89, 24.756, 223.627



68, 25.661, 278.416



43, 3.539, 221.716



51, 32.450, 238.603



10, 12.203, 229.555

Previews

White Background



This preview shows how the CIELCh color 70, 22.431, 40.783 looks on a white background.

Color Contrast Check

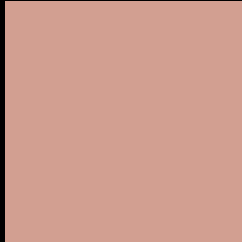
Large Text (above 18pt) WCAG AA × Fail

Any Text WCAG AA × Fail

Large Text (above 18pt) WCAG AAA × Fail

Any Text WCAG AAA × Fail

Black Background



This preview shows how the CIE LCh color 70, 22.431, 40.783 looks on a black background.

Color Contrast Check

Large Text (above 18pt) WCAG AA ✓ Pass

Any Text WCAG AA ✓ Pass

Large Text (above 18pt) WCAG AAA ✓ Pass

Any Text WCAG AAA ✓ Pass

If you want to check with other color combinations, try the [Color Contrast Checker](#).

CIELCh 70, 22.431, 40.783

Background



This preview shows how black text looks on a background with the CIELCh color 70, 22.431, 40.783.



This preview shows how white text looks on a background with the CIELCh color 70, 22.431, 40.783.

Color Blindness Simulation

Color vision deficiency is a very complex topic, and I could not describe the different causes any better than Wikipedia does, so if you want to learn more, you should check out their [article about color blindness](#).

Dichromacy



Original Color

70, 22.431, 40.783

Protanopia

70, 11.340, 92.845

Deuteranopia

70, 17.487, 60.762



Tritanopia
70, 23.098, 5.346

Trichromacy



Original Color
70, 22.431, 40.783

Protanomaly
70, 13.533, 66.121

Deuteranomaly
70, 18.858, 51.614

Tritanomaly
70, 21.885, 17.222

Monochromacy



Original Color
70, 22.431, 40.783

Achromatopsia
71, 0.009, 296.813

Achromatomaly
70, 7.878, 40.113

CSS Examples

Text

The CSS property to change the color of the text to CIELCh 70, 22.431, 40.783 is called "color". The color property can be set on classes, ids or directly on the HTML element.

This example shows how text in the color `rgb(210, 159, 145)` looks like.

```
.text, #text, p{  
    color:rgb(210, 159, 145)  
}
```

If you want to add a text shadow in that color use the text-shadow property, you can generate a text shadow directly with our [CSS Text Shadow Generator](#).

Here you see how black text with a 4 pixel rgb(210, 159, 145) colored shadow looks like.

```
.shadow{ text-shadow: 4px 4px 2px rgb(210, 159, 145) }
```

Border

The CSS property to change the border of an element to CIELCh 70, 22.431, 40.783 is called "border". The border property can be set on classes, ids or directly on the HTML element.

This example shows the color as border, it can be applied via the CSS property "border" or "border-color".

```
.border, #border, table{ border:4px solid rgb(210, 159, 145) }
```

If only the border color should be changed use the property `border-color`.

```
.border{ border-color:rgb(210, 159, 145) }
```

If you want to add a box shadow in that color use:

Here you see how a box with a 4 pixel `rgb(210, 159, 145)` colored shadow looks like.

```
.boxshadow{ -moz-box-shadow:4px 4px 4px  
4px rgb(210, 159, 145); -webkit-box-  
shadow:4px 4px 4px 4px rgb(210, 159, 145);  
box-shadow:4px 4px 4px 4px rgb(210, 159,  
145) }
```

Background

The CSS property to change the background color of an element to CIELCh 70, 22.431, 40.783 is called "background". The background property can be set on classes, ids or directly on the HTML element.

```
.background, #background, body{  
background: rgb(210, 159, 145) }
```

If only the background color should be changed can be used:

```
.background{ background-color: rgb(210,  
159, 145) }
```

This example shows the color as background, it is applied via the CSS property "background".

To optimize and compress your CSS code, you can use our [online CSS compressor and optimizer](#) based on csstidy. If you want to create a linear or radial gradient as background or border, check our [CSS Gradient Generator](#).

Hey! You found this booklet interesting? Support Converting Colors with the new Membership Option!

The pro membership hides all ads, plus gives you double the colors in the color bucket, and more awesome pro features!

[Learn more, Memberships starting at \\$2.50/m!](#)

**Follow me
on Twitter!**

@ConvertingColor