

Converting Colors

CIELCh(70, 22.477, 60.913)

Have a look what the booklet for
CIELCh(70, 22.477, 60.913) contains.

CIELCh(70, 22.445, 60.928)	3
<i>Conversions</i>	4
<i>Details</i>	6
<i>Harmonies</i>	11
<i>Previews</i>	20
<i>Color Blindness Simulation</i>	23
<i>CSS Examples</i>	26

Color

CIELCh(70, 22.445, 60.928)

Conversions

Conversions Part 1

Format	Color
Hex	CBA388
RGB	203, 163, 136
RGB Percent	80%, 64%, 53%
CMY	0.2033, 0.3602, 0.4661
CMYK	0.00, 0.20, 0.33, 0.20
HSL	24°, 39%, 67%
HSV	24°, 33%, 80%
XYZ	42.2512, 40.7494, 28.9860
YIQ	171.8820, 32.5070, 0.0830

Conversions

Conversions Part 2

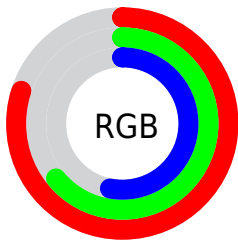
Format	Color
R _Y B	203, 181, 136
Decimal	13345672
CIE Lab	70.00, 10.91, 19.62
CIE LCh	70, 22.445, 60.928
Yxy	40.7494, 0.3773, 0.3639
Android (android.graphics.Color)	4291535752 (0xFFCBA388)
YUV	171.8820, -17.6898, 27.2905
Hunter-Lab	63.8353, 6.4337, 17.7626

Details

The CIELCh color $70, 22.445, 60.928$ is a light color, and the websafe version is hex `CC9999`. A complement of this color would be $70, 19.337, 248.986$, and the grayscale version is $70, 0.009, 296.813$.

A 20% lighter version of the original color is $89, 20.900, 65.640$, and $50, 22.590, 60.210$ is the 20% darker color. If you saturate the color by 10%, you get $67, 30.208, 59.999$, and if you desaturate by 10%, it is $73, 15.146, 61.904$.

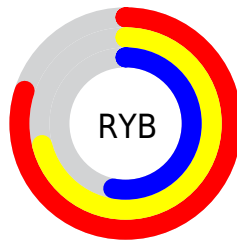
Distribution



Red (80%)

Green (64%)

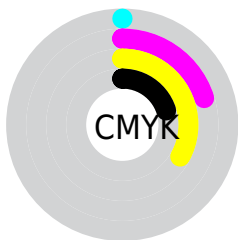
Blue (53%)



Red (80%)

Yellow (71%)

Blue (53%)

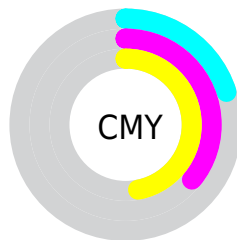


Cyan (0%)

Magenta (20%)

Yellow (33%)

Black (20%)



Cyan (20%)

Magenta (36%)

Yellow (47%)


Brightness & Saturation Gradients

These gradients show how the CIELCh color 70, 22.445, 60.928 changes by changing the brightness by 10 percent. The first figure shows a shift by +10% for each color and the second figure -10%.

Similar to the brightness gradients but the following saturation gradients show a change of the CIELCh color 70, 22.445, 60.928 by changing the saturation by 10% instead.

 70, 22.445, 60.928

 70, 22.445, 60.928

 100, 22.445,
60.928

 60, 22.445, 60.928

 90, 22.445, 60.928

 50, 22.445, 60.928

 40, 22.445, 60.928

 30, 22.445, 60.928

 20, 22.445, 60.928

 10, 22.445, 60.928

 0, 22.445, 60.928

 70, 22.445, 60.928

 70, 22.445, 60.928

 67, 30.208, 59.999

 73, 15.146, 61.904

63, 38.424, 59.101

77, 8.291, 62.886

60, 47.014, 58.225

81, 1.845, 63.717

57, 55.763, 57.309

84, 4.233, 245.087

54, 64.185, 56.189

88, 9.983, 246.039

52, 71.347, 54.527

92, 14.408,
242.370

50, 75.449, 53.085

95, 15.146,
212.246

97, 17.131,
198.369

Harmonies

Complementary

The Complementary color scheme is a pair of colors which are on the opposite of each other on the color wheel.



70, 22.445, 60.928



70, 19.337, 248.986

Rectangle

The Rectangle color scheme consists of four colors that form a rectangle on the color wheel.



70, 22.445, 60.928



70, 22.445, 110.928



70, 22.445, 240.928



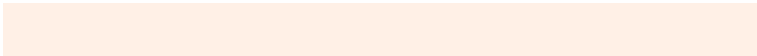
70, 22.445, 290.928

Sweetspot

The Sweet Spot groups the original color and five complimentary colors.



70, 22.445, 60.935



96, 7.610, 63.160



65, 33.349, 341.376



50, 5.215, 63.024



0, 0.000, 0.000



53, 0.007, 296.813

Same Dimension

The Same Dimension uses a secret algorithm to generate beautiful new colors.



70, 22.445, 60.935



83, 33.539, 60.225



79, 31.896, 102.305



41, 3.593, 63.229



41, 64.558, 53.661



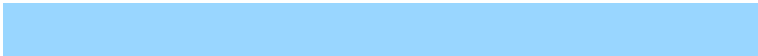
7, 14.626, 46.523

Inverse Universe

The Inverse Universe completely reimagines the original color for something new.



70, 19.337, 248.986



83, 27.772, 250.558



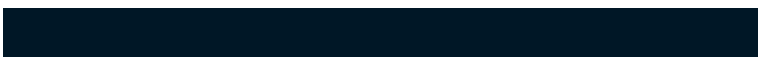
61, 33.985, 290.241



41, 3.465, 245.388



41, 42.662, 272.320



7, 13.407, 260.552

Previews

White Background



This preview shows how the CIELCh color 70, 22.445, 60.928 looks on a white background.

Color Contrast Check

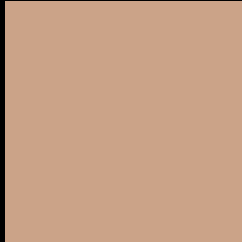
Large Text (above 18pt) WCAG AA × Fail

Any Text WCAG AA × Fail

Large Text (above 18pt) WCAG AAA × Fail

Any Text WCAG AAA × Fail

Black Background



This preview shows how the CIELCh color 70, 22.445, 60.928 looks on a black background.

Color Contrast Check

Large Text (above 18pt) WCAG AA ✓ Pass

Any Text WCAG AA ✓ Pass

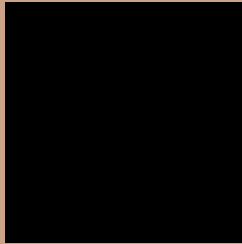
Large Text (above 18pt) WCAG AAA ✓ Pass

Any Text WCAG AAA ✓ Pass

If you want to check with other color combinations, try the [Color Contrast Checker](#).

CIELCh 70, 22.445, 60.928

Background



This preview shows how black text looks on a background with the CIELCh color 70, 22.445, 60.928.



This preview shows how white text looks on a background with the CIELCh color 70, 22.445, 60.928.

Color Blindness Simulation

Color vision deficiency is a very complex topic, and I could not describe the different causes any better than Wikipedia does, so if you want to learn more, you should check out their [article about color blindness](#).

Dichromacy



Original Color

70, 22.445, 60.928

Protanopia

70, 17.346, 94.945

Deuteranopia

70, 21.563, 64.806



Tritanopia
70, 20.176, 0.899

Trichromacy



Original Color
70, 22.445, 60.928

Protanomaly
70, 18.052, 80.139

Deuteranomaly
70, 21.868, 64.036

Tritanomaly
70, 18.368, 24.411

Monochromacy



Original Color
70, 22.445, 60.928

Achromatopsia
70, 0.009, 296.813

Achromatomaly
70, 7.723, 64.470

CSS Examples

Text

The CSS property to change the color of the text to CIELCh 70, 22.445, 60.928 is called "color". The color property can be set on classes, ids or directly on the HTML element.

This example shows how text in the color `rgb(203, 163, 136)` looks like.

```
.text, #text, p{  
    color:rgb(203, 163, 136)  
}
```

If you want to add a text shadow in that color use the text-shadow property, you can generate a text shadow directly with our [CSS Text Shadow Generator](#).

Here you see how black text with a 4 pixel rgb(203, 163, 136) colored shadow looks like.

```
.shadow{ text-shadow: 4px 4px 2px rgb(203, 163, 136) }
```

Border

The CSS property to change the border of an element to CIELCh 70, 22.445, 60.928 is called "border". The border property can be set on classes, ids or directly on the HTML element.

This example shows the color as border, it can be applied via the CSS property "border" or "border-color".

```
.border, #border, table{ border:4px solid rgb(203, 163, 136) }
```

If only the border color should be changed use the property `border-color`.

```
.border{ border-color:rgb(203, 163, 136) }
```

If you want to add a box shadow in that color use:

Here you see how a box with a 4 pixel `rgb(203, 163, 136)` colored shadow looks like.

```
.boxshadow{ -moz-box-shadow:4px 4px 4px  
4px rgb(203, 163, 136); -webkit-box-  
shadow:4px 4px 4px 4px rgb(203, 163, 136);  
box-shadow:4px 4px 4px 4px rgb(203, 163,  
136) }
```

Background

The CSS property to change the background color of an element to CIELCh 70, 22.445, 60.928 is called "background". The background property can be set on classes, ids or directly on the HTML element.

```
.background, #background, body{  
background: rgb(203, 163, 136) }
```

If only the background color should be changed can be used:

```
.background{ background-color: rgb(203,  
163, 136) }
```

This example shows the color as background, it is applied via the CSS property "background".

To optimize and compress your CSS code, you can use our [online CSS compressor and optimizer](#) based on csstidy. If you want to create a linear or radial gradient as background or border, check our [CSS Gradient Generator](#).

Hey! You found this booklet interesting? Support Converting Colors with the new Membership Option!

The pro membership hides all ads, plus gives you double the colors in the color bucket, and more awesome pro features!

[Learn more, Memberships starting at \\$2.50/m!](#)

**Follow me
on Twitter!**

@ConvertingColor