

Converting Colors

CIELCh(70, 24.161, 40.060)

Have a look what the booklet for
CIELCh(70, 24.161, 40.060) contains.

CIELCh(70, 24.065, 39.543)	3
<i>Conversions</i>	4
<i>Details</i>	6
<i>Harmonies</i>	11
<i>Previews</i>	20
<i>Color Blindness Simulation</i>	23
<i>CSS Examples</i>	26

Color

CIELCh(70, 24.065, 39.543)

Conversions

Conversions Part 1

Format	Color
Hex	D59E90
RGB	213, 158, 144
RGB Percent	84%, 62%, 56%
CMY	0.1636, 0.3794, 0.4343
CMYK	0.00, 0.26, 0.32, 0.16
HSL	12°, 45%, 70%
HSV	12°, 32%, 84%
XYZ	44.8441, 40.7494, 31.9876
YIQ	172.8490, 37.2740, 7.3060

Conversions

Conversions Part 2

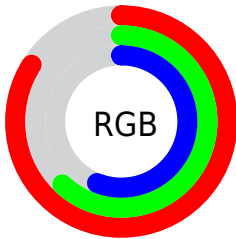
Format	Color
R _Y B	213, 162, 144
Decimal	13999760
CIE Lab	70.00, 18.56, 15.32
CIE LCh	70, 24.065, 39.543
Yxy	40.7494, 0.3814, 0.3466
Android (android.graphics.Color)	4292189840 (0xFFD59E90)
YUV	172.8490, -14.2226, 35.2124
Hunter-Lab	63.8353, 13.6840, 14.9747

Details

The CIELCh color **70, 24.065, 39.543** is a light color, and the websafe version is hex **CC9999**. A complement of this color would be **77, 19.197, 221.449**, and the grayscale version is **71, 0.009, 296.813**.

A 20% lighter version of the original color is **88, 17.923, 45.996**, and **50, 24.107, 38.521** is the 20% darker color. If you saturate the color by 10%, you get **66, 32.832, 39.790**, and if you desaturate by 10%, it is **75, 15.947, 39.477**.

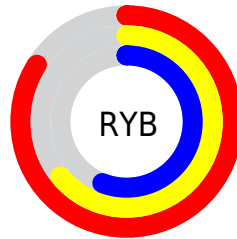
Distribution



Red (84%)

Green (62%)

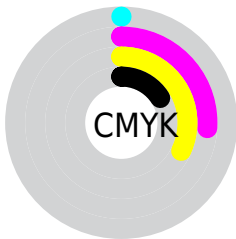
Blue (56%)



Red (84%)

Yellow (64%)

Blue (56%)

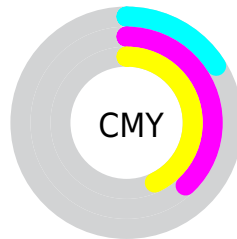


Cyan (0%)

Magenta (26%)

Yellow (32%)

Black (16%)



Cyan (16%)

Magenta (38%)

Yellow (43%)

Brightness & Saturation Gradients

These gradients show how the CIELCh color 70, 24.065, 39.543 changes by changing the brightness by 10 percent. The first figure shows a shift by +10% for each color and the second figure -10%.

Similar to the brightness gradients but the following saturation gradients show a change of the CIELCh color 70, 24.065, 39.543 by changing the saturation by 10% instead.

 70, 24.065, 39.543

 70, 24.065, 39.543

 100, 24.065,
39.543

 60, 24.065, 39.543

 90, 24.065, 39.543

 50, 24.065, 39.543

 40, 24.065, 39.543

 30, 24.065, 39.543

 20, 24.065, 39.543

 10, 24.065, 39.543

 0, 24.065, 39.543

 70, 24.065, 39.543

 70, 24.065, 39.543

 66, 32.832, 39.790

 75, 15.947, 39.477

61, 42.240, 40.239

79, 8.459, 39.522

57, 52.202, 40.919

84, 1.552, 39.403

54, 62.504, 41.806

89, 4.829, 220.147

51, 72.656, 42.747

94, 10.740,
220.397

48, 81.565, 43.303

97, 13.962,
198.574

47, 86.886, 43.361

Harmonies

Complementary

The Complementary color scheme is a pair of colors which are on the opposite of each other on the color wheel.



70, 24.065, 39.543



77, 19.197, 221.449

Rectangle

The Rectangle color scheme consists of four colors that form a rectangle on the color wheel.



70, 24.065, 39.543



70, 24.065, 89.543



70, 24.065, 219.543



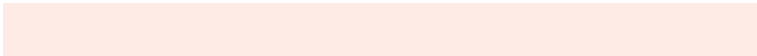
70, 24.065, 269.543

Sweetspot

The Sweet Spot groups the original color and five complimentary colors.



70, 24.064, 39.549



94, 7.835, 39.539



68, 38.966, 332.617



50, 5.377, 39.528



0, 0.000, 0.000



53, 0.007, 296.813

Same Dimension

The Same Dimension uses a secret algorithm to generate beautiful new colors.



70, 24.064, 39.549



79, 34.517, 39.699



79, 27.042, 89.592



42, 3.850, 39.543



38, 73.274, 43.738



6, 19.381, 30.924

Inverse Universe

The Inverse Universe completely reimagines the original color for something new.



77, 19.197, 221.449



89, 25.981, 222.091



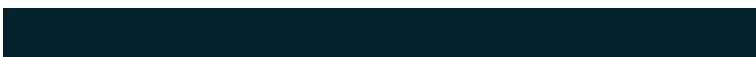
68, 27.209, 278.704



44, 3.631, 220.197



52, 32.575, 235.960



12, 12.648, 227.914

Previews

White Background



This preview shows how the CIELCh color 70, 24.065, 39.543 looks on a white background.

Color Contrast Check

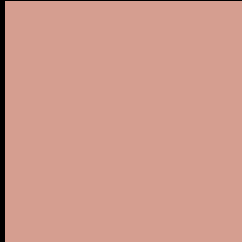
Large Text (above 18pt) WCAG AA × Fail

Any Text WCAG AA × Fail

Large Text (above 18pt) WCAG AAA × Fail

Any Text WCAG AAA × Fail

Black Background



This preview shows how the CIELCh color 70, 24.065, 39.543 looks on a black background.

Color Contrast Check

Large Text (above 18pt) WCAG AA ✓ Pass

Any Text WCAG AA ✓ Pass

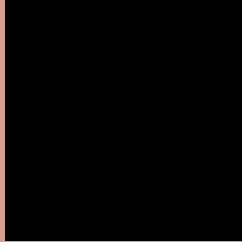
Large Text (above 18pt) WCAG AAA ✓ Pass

Any Text WCAG AAA ✓ Pass

If you want to check with other color combinations, try the [Color Contrast Checker](#).

CIELCh 70, 24.065, 39.543

Background



This preview shows how black text looks on a background with the CIELCh color 70, 24.065, 39.543.

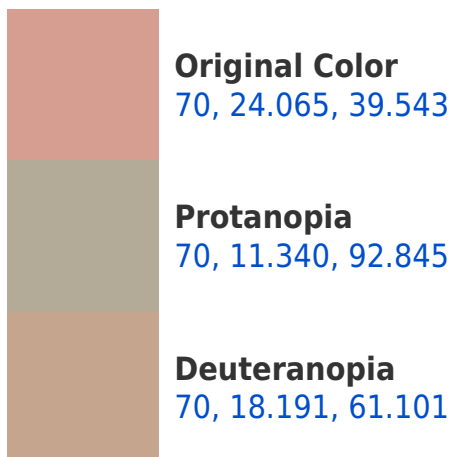


This preview shows how white text looks on a background with the CIELCh color 70, 24.065, 39.543.

Color Blindness Simulation

Color vision deficiency is a very complex topic, and I could not describe the different causes any better than Wikipedia does, so if you want to learn more, you should check out their [article about color blindness](#).

Dichromacy





Tritanopia
70, 24.655, 6.593

Trichromacy



Original Color
70, 24.065, 39.543

Protanomaly
70, 13.738, 62.207

Deuteranomaly
70, 20.231, 52.857

Tritanomaly
70, 23.540, 17.697

Monochromacy



Original Color
70, 24.065, 39.543

Achromatopsia
71, 0.009, 296.813

Achromatomaly
70, 8.252, 39.190

CSS Examples

Text

The CSS property to change the color of the text to CIELCh 70, 24.065, 39.543 is called "color". The color property can be set on classes, ids or directly on the HTML element.

This example shows how text in the color `rgb(213, 158, 144)` looks like.

```
.text, #text, p{  
    color:rgb(213, 158, 144)  
}
```

If you want to add a text shadow in that color use the text-shadow property, you can generate a text shadow directly with our [CSS Text Shadow Generator](#).

Here you see how black text with a 4 pixel rgb(213, 158, 144) colored shadow looks like.

```
.shadow{ text-shadow: 4px 4px 2px rgb(213, 158, 144) }
```

Border

The CSS property to change the border of an element to CIELCh 70, 24.065, 39.543 is called "border". The border property can be set on classes, ids or directly on the HTML element.

This example shows the color as border, it can be applied via the CSS property "border" or "border-color".

```
.border, #border, table{ border:4px solid rgb(213, 158, 144) }
```

If only the border color should be changed use the property `border-color`.

```
.border{ border-color:rgb(213, 158, 144) }
```

If you want to add a box shadow in that color use:

Here you see how a box with a 4 pixel `rgb(213, 158, 144)` colored shadow looks like.

```
.boxshadow{ -moz-box-shadow:4px 4px 4px  
4px rgb(213, 158, 144); -webkit-box-  
shadow:4px 4px 4px 4px rgb(213, 158, 144);  
box-shadow:4px 4px 4px 4px rgb(213, 158,  
144) }
```

Background

The CSS property to change the background color of an element to CIELCh 70, 24.065, 39.543 is called "background". The background property can be set on classes, ids or directly on the HTML element.

```
.background, #background, body{  
background: rgb(213, 158, 144) }
```

If only the background color should be changed can be used:

```
.background{ background-color: rgb(213,  
158, 144) }
```

This example shows the color as background, it is applied via the CSS property "background".

To optimize and compress your CSS code, you can use our [online CSS compressor and optimizer](#) based on csstidy. If you want to create a linear or radial gradient as background or border, check our [CSS Gradient Generator](#).

Hey! You found this booklet interesting? Support Converting Colors with the new Membership Option!

The pro membership hides all ads, plus gives you double the colors in the color bucket, and more awesome pro features!

[Learn more, Memberships starting at \\$2.50/m!](#)

**Follow me
on Twitter!**

@ConvertingColor