

Converting Colors

CIELCh(70, 24.862, 55.071)

Have a look what the booklet for
CIELCh(70, 24.862, 55.071) contains.

CIELCh(70, 24.862, 55.071)	3
<i>Conversions</i>	4
<i>Details</i>	6
<i>Harmonies</i>	11
<i>Previews</i>	20
<i>Color Blindness Simulation</i>	23
<i>CSS Examples</i>	26

Color

CIELCh(70, 24.862, 55.071)

Conversions

Conversions Part 1

Format	Color
Hex	D1A187
RGB	209, 161, 135
RGB Percent	82%, 63%, 53%
CMY	0.1807, 0.3689, 0.4709
CMYK	0.00, 0.23, 0.35, 0.18
HSL	21°, 45%, 67%
HSV	21°, 35%, 82%
XYZ	43.3666, 40.7494, 28.4711
YIQ	172.3880, 36.9540, 2.0900

Conversions

Conversions Part 2

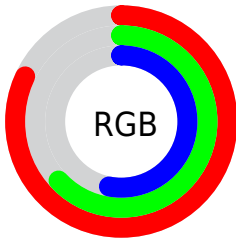
Format	Color
R _Y B	209, 175, 135
Decimal	13738375
CIE Lab	70.00, 14.24, 20.38
CIE LCh	70, 24.862, 55.071
Yxy	40.7494, 0.3852, 0.3619
Android (android.graphics.Color)	4291928455 (0xFFD1A187)
YUV	172.3880, -18.4323, 32.1087
Hunter-Lab	63.8353, 9.5526, 18.2408

Details

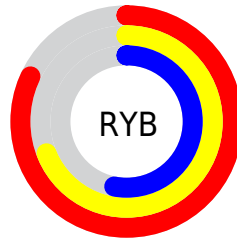
The CIELCh color **70, 24.862, 55.071** is a light color, and the websafe version is hex **CC9999**. A complement of this color would be **72, 20.504, 242.528**, and the grayscale version is **71, 0.009, 296.813**.

A 20% lighter version of the original color is **89, 21.123, 63.213**, and **50, 24.913, 54.698** is the 20% darker color. If you saturate the color by 10%, you get **66, 33.052, 54.414**, and if you desaturate by 10%, it is **74, 17.210, 55.810**.

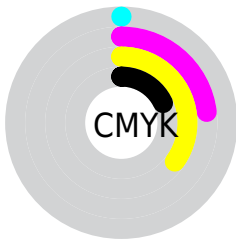
Distribution



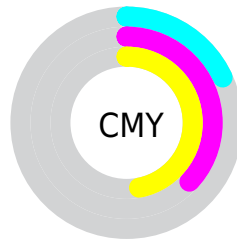
- Red (82%)
- Green (63%)
- Blue (53%)



- Red (82%)
- Yellow (69%)
- Blue (53%)



- Cyan (0%)
- Magenta (23%)
- Yellow (35%)
- Black (18%)



- Cyan (18%)
- Magenta (37%)
- Yellow (47%)


Brightness & Saturation Gradients

These gradients show how the CIELCh color 70, 24.862, 55.071 changes by changing the brightness by 10 percent. The first figure shows a shift by +10% for each color and the second figure -10%.

Similar to the brightness gradients but the following saturation gradients show a change of the CIELCh color 70, 24.862, 55.071 by changing the saturation by 10% instead.

 70, 24.862, 55.071

 70, 24.862, 55.071

 100, 24.862,
55.071

 60, 24.862, 55.071

 90, 24.862, 55.071

 50, 24.862, 55.071

 40, 24.862, 55.071

 30, 24.862, 55.071

 20, 24.862, 55.071

 10, 24.862, 55.071

 0, 24.862, 55.071

 70, 24.862, 55.071

 70, 24.862, 55.071

 66, 33.052, 54.414

 74, 17.210, 55.810

63, 41.764, 53.827

78, 10.075, 56.588

59, 50.904, 53.298

82, 3.418, 57.333

56, 60.210, 52.749

86, 2.808, 238.517

53, 69.089, 51.974

90, 8.651, 239.274

51, 76.403, 50.539

94, 12.720,
230.147

50, 79.330, 49.832

97, 15.342,
198.485

Harmonies

Complementary

The Complementary color scheme is a pair of colors which are on the opposite of each other on the color wheel.



70, 24.862, 55.071



72, 20.504, 242.528

Rectangle

The Rectangle color scheme consists of four colors that form a rectangle on the color wheel.



70, 24.862, 55.071



70, 24.862, 105.071



70, 24.862, 235.071



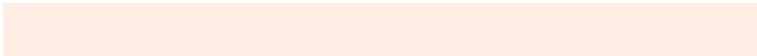
70, 24.862, 285.071

Sweetspot

The Sweet Spot groups the original color and five complimentary colors.



70, 24.861, 55.078



95, 8.325, 56.925



65, 37.815, 339.173



50, 5.620, 56.818



0, 0.000, 0.000



53, 0.007, 296.813

Same Dimension

The Same Dimension uses a secret algorithm to generate beautiful new colors.



70, 24.861, 55.078



80, 36.534, 54.536



79, 33.392, 99.285



42, 3.634, 57.056



40, 67.177, 50.393



7, 16.419, 41.756

Inverse Universe

The Inverse Universe completely reimagines the original color for something new.



72, 20.504, 242.528



83, 28.607, 244.147



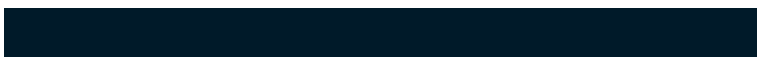
62, 35.364, 288.299



42, 3.477, 238.922



44, 39.064, 264.683



8, 13.316, 252.857

Previews

White Background



This preview shows how the CIELCh color 70, 24.862, 55.071 looks on a white background.

Color Contrast Check

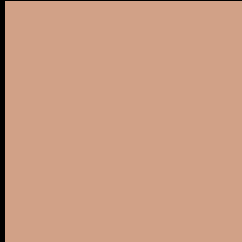
Large Text (above 18pt) WCAG AA × Fail

Any Text WCAG AA × Fail

Large Text (above 18pt) WCAG AAA × Fail

Any Text WCAG AAA × Fail

Black Background



This preview shows how the CIELCh color 70, 24.862, 55.071 looks on a black background.

Color Contrast Check

Large Text (above 18pt) WCAG AA ✓ Pass

Any Text WCAG AA ✓ Pass

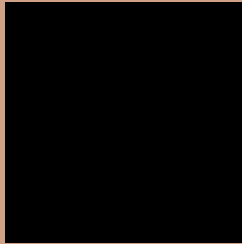
Large Text (above 18pt) WCAG AAA ✓ Pass

Any Text WCAG AAA ✓ Pass

If you want to check with other color combinations, try the [Color Contrast Checker](#).

CIELCh 70, 24.862, 55.071

Background



This preview shows how black text looks on a background with the CIELCh color 70, 24.862, 55.071.



This preview shows how white text looks on a background with the CIELCh color 70, 24.862, 55.071.

Color Blindness Simulation

Color vision deficiency is a very complex topic, and I could not describe the different causes any better than Wikipedia does, so if you want to learn more, you should check out their [article about color blindness](#).

Dichromacy





Tritanopia
70, 22.717, 5.017

Trichromacy



Original Color
70, 24.862, 55.071

Protanomaly
70, 18.720, 76.794

Deuteranomaly
70, 23.242, 62.721

Tritanomaly
70, 21.290, 24.236

Monochromacy



Original Color
70, 24.862, 55.071

Achromatopsia
70, 0.009, 296.813

Achromatomaly
70, 8.276, 56.080

CSS Examples

Text

The CSS property to change the color of the text to CIELCh 70, 24.862, 55.071 is called "color". The color property can be set on classes, ids or directly on the HTML element.

This example shows how text in the color `rgb(209, 161, 135)` looks like.

```
.text, #text, p{  
    color:rgb(209, 161, 135)  
}
```

If you want to add a text shadow in that color use the text-shadow property, you can generate a text shadow directly with our [CSS Text Shadow Generator](#).

Here you see how black text with a 4 pixel rgb(209, 161, 135) colored shadow looks like.

```
.shadow{ text-shadow: 4px 4px 2px rgb(209, 161, 135) }
```

Border

The CSS property to change the border of an element to CIELCh 70, 24.862, 55.071 is called "border". The border property can be set on classes, ids or directly on the HTML element.

This example shows the color as border, it can be applied via the CSS property "border" or "border-color".

```
.border, #border, table{ border:4px solid rgb(209, 161, 135) }
```

If only the border color should be changed use the property `border-color`.

```
.border{ border-color:rgb(209, 161, 135) }
```

If you want to add a box shadow in that color use:

Here you see how a box with a 4 pixel `rgb(209, 161, 135)` colored shadow looks like.

```
.boxshadow{ -moz-box-shadow:4px 4px 4px  
4px rgb(209, 161, 135); -webkit-box-  
shadow:4px 4px 4px 4px rgb(209, 161, 135);  
box-shadow:4px 4px 4px 4px rgb(209, 161,  
135) }
```

Background

The CSS property to change the background color of an element to CIELCh 70, 24.862, 55.071 is called "background". The background property can be set on classes, ids or directly on the HTML element.

```
.background, #background, body{  
background: rgb(209, 161, 135) }
```

If only the background color should be changed can be used:

```
.background{ background-color: rgb(209,  
161, 135) }
```

This example shows the color as background, it is applied via the CSS property "background".

To optimize and compress your CSS code, you can use our [online CSS compressor and optimizer](#) based on csstidy. If you want to create a linear or radial gradient as background or border, check our [CSS Gradient Generator](#).

Hey! You found this booklet interesting? Support Converting Colors with the new Membership Option!

The pro membership hides all ads, plus gives you double the colors in the color bucket, and more awesome pro features!

[Learn more, Memberships starting at \\$2.50/m!](#)

**Follow me
on Twitter!**

@ConvertingColor