

Converting Colors

CIELCh(70, 25.119, 38.615)

Have a look what the booklet for
CIELCh(70, 25.119, 38.615) contains.

CIELCh(70, 25.088, 37.620)	3
<i>Conversions</i>	4
<i>Details</i>	6
<i>Harmonies</i>	11
<i>Previews</i>	20
<i>Color Blindness Simulation</i>	23
<i>CSS Examples</i>	26

Color

CIELCh(70, 25.088, 37.620)

Conversions

Conversions Part 1

Format	Color
Hex	D79D90
RGB	215, 157, 144
RGB Percent	84%, 62%, 56%
CMY	0.1555, 0.3830, 0.4340
CMYK	0.00, 0.27, 0.33, 0.16
HSL	11°, 47%, 71%
HSV	11°, 33%, 84%
XYZ	45.2998, 40.7494, 31.9925
YIQ	172.8600, 38.7410, 8.2530

Conversions

Conversions Part 2

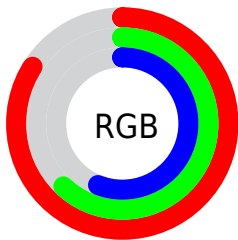
Format	Color
RYB	215, 160, 144
Decimal	14130576
CIELab	70.00, 19.87, 15.31
CIELCh	70, 25.088, 37.620
Yxy	40.7494, 0.3838, 0.3452
Android (android.graphics.Color)	4292320656 (0xFFD79D90)
YUV	172.8600, -14.2280, 36.9568
Hunter-Lab	63.8353, 14.9582, 14.9701

Details

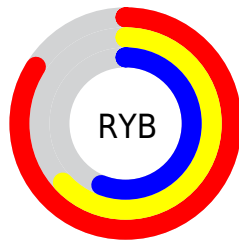
The CIELCh color **70, 25.088, 37.620** is a light color, and the websafe version is hex **CC9999**. A complement of this color would be **78, 19.849, 218.855**, and the grayscale version is **71, 0.009, 296.813**.

A 20% lighter version of the original color is **88, 18.049, 44.059**, and **50, 25.236, 36.608** is the 20% darker color. If you saturate the color by 10%, you get **65, 34.074, 38.012**, and if you desaturate by 10%, it is **75, 16.762, 37.427**.

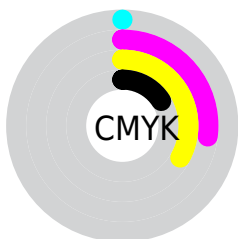
Distribution



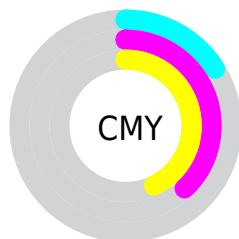
- Red (84%)
- Green (62%)
- Blue (56%)



- Red (84%)
- Yellow (63%)
- Blue (56%)



- Cyan (0%)
- Magenta (27%)
- Yellow (33%)
- Black (16%)



- Cyan (16%)
- Magenta (38%)
- Yellow (43%)


Brightness & Saturation Gradients

These gradients show how the CIELCh color 70, 25.088, 37.620 changes by changing the brightness by 10 percent. The first figure shows a shift by +10% for each color and the second figure -10%.

Similar to the brightness gradients but the following saturation gradients show a change of the CIELCh color 70, 25.088, 37.620 by changing the saturation by 10% instead.

 70, 25.088, 37.620

 70, 25.088, 37.620

 100, 25.088,
37.620

 60, 25.088, 37.620

 90, 25.088, 37.620

 50, 25.088, 37.620

 40, 25.088, 37.620

 30, 25.088, 37.620

 20, 25.088, 37.620

 10, 25.088, 37.620

 0, 25.088, 37.620

 70, 25.088, 37.620

 70, 25.088, 37.620

 65, 34.074, 38.012

 75, 16.762, 37.427

61, 43.701, 38.629

80, 9.082, 37.362

57, 53.867, 39.505

85, 2.002, 37.217

54, 64.336, 40.615

90, 4.532, 217.799

51, 74.577, 41.794

95, 10.578,
217.956

48, 83.417, 42.559

97, 13.299,
198.618

47, 88.235, 42.779

Harmonies

Complementary

The Complementary color scheme is a pair of colors which are on the opposite of each other on the color wheel.



70, 25.088, 37.620



78, 19.849, 218.855

Rectangle

The Rectangle color scheme consists of four colors that form a rectangle on the color wheel.



70, 25.088, 37.620



70, 25.088, 87.620



70, 25.088, 217.620



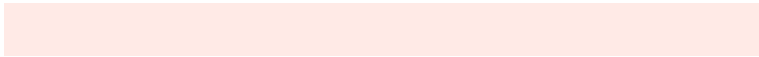
70, 25.088, 267.620

Sweetspot

The Sweet Spot groups the original color and five complimentary colors.



70, 25.087, 37.626



94, 7.927, 37.355



69, 40.938, 331.445



49, 5.440, 37.358



0, 0.000, 0.000



53, 0.007, 296.813

Same Dimension

The Same Dimension uses a secret algorithm to generate beautiful new colors.



70, 25.087, 37.626



78, 35.983, 37.891



79, 27.016, 86.857



42, 3.895, 37.353



37, 73.876, 43.139



6, 19.607, 29.697

Inverse Universe

The Inverse Universe completely reimagines the original color for something new.



78, 19.849, 218.855



89, 26.748, 219.439



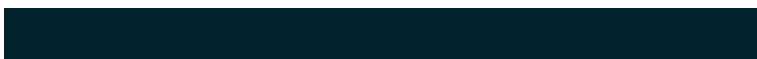
69, 26.828, 276.358



44, 3.670, 217.830



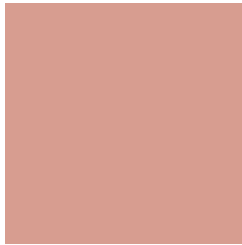
54, 32.329, 231.658



12, 12.664, 224.423

Previews

White Background



This preview shows how the CIELCh color 70, 25.088, 37.620 looks on a white background.

Color Contrast Check

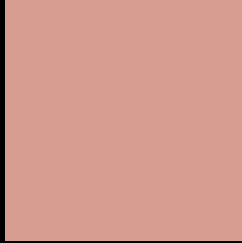
Large Text (above 18pt) WCAG AA × Fail

Any Text WCAG AA × Fail

Large Text (above 18pt) WCAG AAA × Fail

Any Text WCAG AAA × Fail

Black Background



This preview shows how the CIELCh color 70, 25.088, 37.620 looks on a black background.

Color Contrast Check

Large Text (above 18pt) WCAG AA ✓ Pass

Any Text WCAG AA ✓ Pass

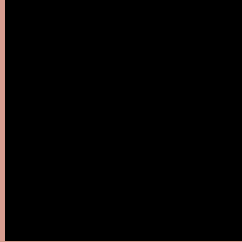
Large Text (above 18pt) WCAG AAA ✓ Pass

Any Text WCAG AAA ✓ Pass

If you want to check with other color combinations, try the [Color Contrast Checker](#).

CIELCh 70, 25.088, 37.620

Background



This preview shows how black text looks on a background with the CIELCh color 70, 25.088, 37.620.



This preview shows how white text looks on a background with the CIELCh color 70, 25.088, 37.620.

Color Blindness Simulation

Color vision deficiency is a very complex topic, and I could not describe the different causes any better than Wikipedia does, so if you want to learn more, you should check out their [article about color blindness](#).

Dichromacy



Original Color


70, 25.088, 37.620

Protanopia

70, 11.340, 92.845

Deuteranopia

70, 18.191, 61.101



Tritanopia
70, 25.839, 7.451

Trichromacy



Original Color
70, 25.088, 37.620

Protanomaly
70, 14.045, 61.094

Deuteranomaly
70, 20.294, 51.043

Tritanomaly
70, 24.794, 18.032

Monochromacy



Original Color
70, 25.088, 37.620

Achromatopsia
71, 0.009, 296.813

Achromatomaly
70, 8.465, 34.909

CSS Examples

Text

The CSS property to change the color of the text to CIELCh 70, 25.088, 37.620 is called "color". The color property can be set on classes, ids or directly on the HTML element.

This example shows how text in the color `rgb(215, 157, 144)` looks like.

```
.text, #text, p{  
    color:rgb(215, 157, 144)  
}
```

If you want to add a text shadow in that color use the text-shadow property, you can generate a text shadow directly with our [CSS Text Shadow Generator](#).

Here you see how black text with a 4 pixel rgb(215, 157, 144) colored shadow looks like.

```
.shadow{ text-shadow: 4px 4px 2px rgb(215, 157, 144) }
```

Border

The CSS property to change the border of an element to CIELCh 70, 25.088, 37.620 is called "border". The border property can be set on classes, ids or directly on the HTML element.

This example shows the color as border, it can be applied via the CSS property "border" or "border-color".

```
.border, #border, table{ border:4px solid rgb(215, 157, 144) }
```

If only the border color should be changed use the property `border-color`.

```
.border{ border-color:rgb(215, 157, 144) }
```

If you want to add a box shadow in that color use:

Here you see how a box with a 4 pixel `rgb(215, 157, 144)` colored shadow looks like.

```
.boxshadow{ -moz-box-shadow:4px 4px 4px  
4px rgb(215, 157, 144); -webkit-box-  
shadow:4px 4px 4px 4px rgb(215, 157, 144);  
box-shadow:4px 4px 4px 4px rgb(215, 157,  
144) }
```

Background

The CSS property to change the background color of an element to CIELCh 70, 25.088, 37.620 is called "background". The background property can be set on classes, ids or directly on the HTML element.

```
.background, #background, body{  
background: rgb(215, 157, 144) }
```

If only the background color should be changed can be used:

```
.background{ background-color: rgb(215,  
157, 144) }
```

This example shows the color as background, it is applied via the CSS property "background".

To optimize and compress your CSS code, you can use our [online CSS compressor and optimizer](#) based on csstidy. If you want to create a linear or radial gradient as background or border, check our [CSS Gradient Generator](#).

Hey! You found this booklet interesting? Support Converting Colors with the new Membership Option!

The pro membership hides all ads, plus gives you double the colors in the color bucket, and more awesome pro features!

[Learn more, Memberships starting at \\$2.50/m!](#)

**Follow me
on Twitter!**

@ConvertingColor