

Converting Colors

CIELCh(70, 27.656, 40.664)

Have a look what the booklet for
CIELCh(70, 27.656, 40.664) contains.

CIELCh(70, 27.440, 39.822)	3
<i>Conversions</i>	4
<i>Details</i>	6
<i>Harmonies</i>	11
<i>Previews</i>	20
<i>Color Blindness Simulation</i>	23
<i>CSS Examples</i>	26

Color

CIELCh(70, 27.440, 39.822)

Conversions

Conversions Part 1	
Format	Color
Hex	DA9C8C
RGB	218, 156, 140
RGB Percent	85%, 61%, 55%
CMY	0.1437, 0.3869, 0.4497
CMYK	0.00, 0.28, 0.36, 0.14
HSL	12°, 52%, 70%
HSV	12°, 36%, 86%
XYZ	45.7198, 40.7494, 30.3898
YIQ	172.7140, 42.0880, 8.1680

Conversions

Conversions Part 2

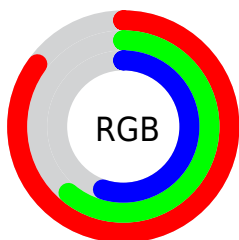
Format	Color
RYB	218, 160, 140
Decimal	14326924
CIELab	70.00, 21.07, 17.57
CIElCh	70, 27.440, 39.822
Yxy	40.7494, 0.3912, 0.3487
Android (android.graphics.Color)	4292517004 (0xFFDA9C8C)
YUV	172.7140, -16.1280, 39.7158
Hunter-Lab	63.8353, 16.1326, 16.4587

Details

The CIELCh color **70, 27.440, 39.822** is a light color, and the websafe version is hex **CC9999**. A complement of this color would be **78, 21.297, 222.050**, and the grayscale version is **71, 0.009, 296.813**.

A 20% lighter version of the original color is **88, 19.200, 47.667**, and **50, 27.375, 39.291** is the 20% darker color. If you saturate the color by 10%, you get **66, 36.592, 40.121**, and if you desaturate by 10%, it is **75, 18.951, 39.716**.

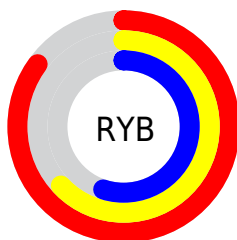
Distribution



Red (85%)

Green (61%)

Blue (55%)



Red (85%)

Yellow (63%)

Blue (55%)

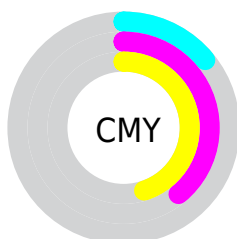


Cyan (0%)

Magenta (28%)

Yellow (36%)

Black (14%)



Cyan (14%)

Magenta (39%)

Yellow (45%)

Brightness & Saturation Gradients

These gradients show how the CIELCh color 70, 27.440, 39.822 changes by changing the brightness by 10 percent. The first figure shows a shift by +10% for each color and the second figure -10%.

Similar to the brightness gradients but the following saturation gradients show a change of the CIELCh color 70, 27.440, 39.822 by changing the saturation by 10% instead.

 70, 27.440, 39.822

 70, 27.440, 39.822

 100, 27.440,
39.822

 60, 27.440, 39.822

 90, 27.440, 39.822

 50, 27.440, 39.822

 40, 27.440, 39.822

 30, 27.440, 39.822

 20, 27.440, 39.822

 10, 27.440, 39.822

 0, 27.440, 39.822

 70, 27.440, 39.822

 70, 27.440, 39.822


 66, 36.592, 40.121

 75, 18.951, 39.716

 61, 46.379, 40.631

 79, 11.115, 39.740

 57, 56.677, 41.369

 84, 3.889, 39.804

 54, 67.195, 42.279

 89, 2.781, 220.407

 51, 77.266, 43.130

 94, 8.954, 220.572

 49, 85.471, 43.341

 98, 12.335,
198.682

 48, 88.396, 43.395

Harmonies

Complementary

The Complementary color scheme is a pair of colors which are on the opposite of each other on the color wheel.



70, 27.440, 39.822



78, 21.297, 222.050

Rectangle

The Rectangle color scheme consists of four colors that form a rectangle on the color wheel.



70, 27.440, 39.822



70, 27.440, 89.822



70, 27.440, 219.822



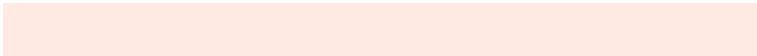
70, 27.440, 269.822

Sweetspot

The Sweet Spot groups the original color and five complimentary colors.



70, 27.439, 39.828



94, 8.644, 39.779



68, 43.761, 332.853



49, 5.841, 39.767



0, 0.000, 0.000



53, 0.007, 296.813

Same Dimension

The Same Dimension uses a secret algorithm to generate beautiful new colors.



70, 27.439, 39.828



77, 38.643, 40.033



80, 30.504, 89.135



43, 3.921, 39.793



38, 74.039, 43.781



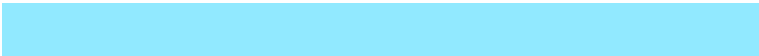
7, 20.868, 31.668

Inverse Universe

The Inverse Universe completely reimagines the original color for something new.



78, 21.297, 222.050



88, 28.107, 222.847



67, 30.735, 279.394



45, 3.698, 220.468



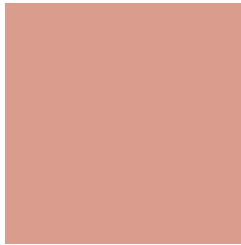
53, 32.977, 236.493



13, 13.099, 228.810

Previews

White Background



This preview shows how the CIELCh color 70, 27.440, 39.822 looks on a white background.

Color Contrast Check

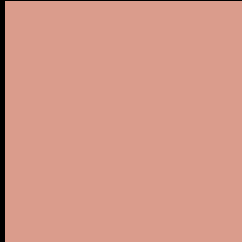
Large Text (above 18pt) WCAG AA × Fail

Any Text WCAG AA × Fail

Large Text (above 18pt) WCAG AAA × Fail

Any Text WCAG AAA × Fail

Black Background



This preview shows how the CIE LCh color 70, 27.440, 39.822 looks on a black background.

Color Contrast Check

Large Text (above 18pt) WCAG AA ✓ Pass

Any Text WCAG AA ✓ Pass

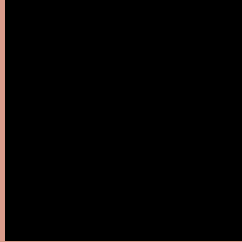
Large Text (above 18pt) WCAG AAA ✓ Pass

Any Text WCAG AAA ✓ Pass

If you want to check with other color combinations, try the [Color Contrast Checker](#).

CIELCh 70, 27.440, 39.822

Background



This preview shows how black text looks on a background with the CIELCh color 70, 27.440, 39.822.



This preview shows how white text looks on a background with the CIELCh color 70, 27.440, 39.822.

Color Blindness Simulation

Color vision deficiency is a very complex topic, and I could not describe the different causes any better than Wikipedia does, so if you want to learn more, you should check out their [article about color blindness](#).

Dichromacy



Original Color

70, 27.440, 39.822

Protanopia

70, 13.551, 93.458

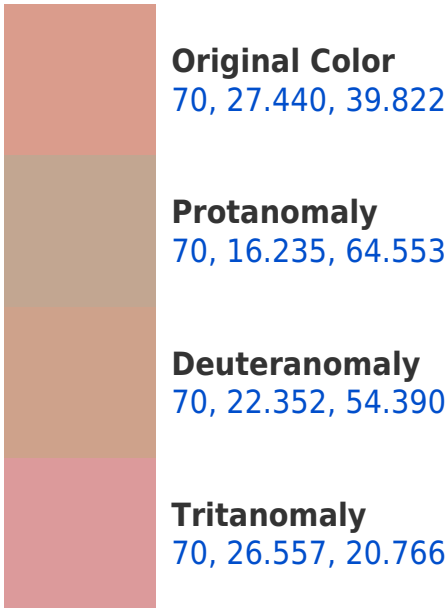
Deuteranopia

70, 20.103, 64.552

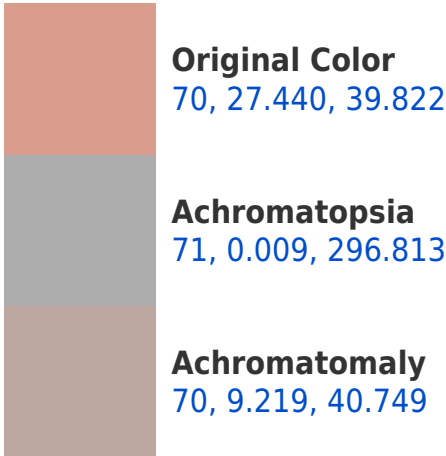


Tritanopia
70, 27.361, 9.616

Trichromacy



Monochromacy



CSS Examples

Text

The CSS property to change the color of the text to CIELCh 70, 27.440, 39.822 is called "color". The color property can be set on classes, ids or directly on the HTML element.

This example shows how text in the color `rgb(218, 156, 140)` looks like.

```
.text, #text, p{  
    color:rgb(218, 156, 140)  
}
```

If you want to add a text shadow in that color use the text-shadow property, you can generate a text shadow directly with our [CSS Text Shadow Generator](#).

Here you see how black text with a 4 pixel rgb(218, 156, 140) colored shadow looks like.

```
.shadow{ text-shadow: 4px 4px 2px rgb(218, 156, 140) }
```

Border

The CSS property to change the border of an element to CIELCh 70, 27.440, 39.822 is called "border". The border property can be set on classes, ids or directly on the HTML element.

This example shows the color as border, it can be applied via the CSS property "border" or "border-color".

```
.border, #border, table{ border:4px solid rgb(218, 156, 140) }
```

If only the border color should be changed use the property border-color.

```
.border{ border-color:rgb(218, 156, 140) }
```

If you want to add a box shadow in that color use:

Here you see how a box with a 4 pixel rgb(218, 156, 140) colored shadow looks like.

```
.boxshadow{ -moz-box-shadow:4px 4px 4px  
4px rgb(218, 156, 140); -webkit-box-  
shadow:4px 4px 4px 4px rgb(218, 156, 140);  
box-shadow:4px 4px 4px 4px rgb(218, 156,  
140) }
```

Background

The CSS property to change the background color of an element to CIELCh 70, 27.440, 39.822 is called "background". The background property can be set on classes, ids or directly on the HTML element.

```
.background, #background, body{  
background: rgb(218, 156, 140) }
```

If only the background color should be changed can be used:

```
.background{ background-color: rgb(218,  
156, 140) }
```

This example shows the color as background, it is applied via the CSS property "background".

To optimize and compress your CSS code, you can use our [online CSS compressor and optimizer](#) based on csstidy. If you want to create a linear or radial gradient as background or border, check our [CSS Gradient Generator](#).

Hey! You found this booklet
interesting? Support Converting
Colors with the new Membership
Option!

The pro membership hides all ads, plus gives you
double the colors in the color bucket, and more
awesome pro features!

[Learn more, Memberships starting at \\$2.50/m!](#)

**Follow me
on Twitter!**

@ConvertingColor