

Converting Colors

CIELCh(70, 29.712, 16.767)

Have a look what the booklet for
CIELCh(70, 29.712, 16.767) contains.

CIELCh(70, 29.745, 16.125)	3
<i>Conversions</i>	4
<i>Details</i>	6
<i>Harmonies</i>	11
<i>Previews</i>	20
<i>Color Blindness Simulation</i>	23
<i>CSS Examples</i>	26

Color

CIELCh(70, 29.745, 16.125)

Conversions

Conversions Part 1

Format	Color
Hex	E1979D
RGB	225, 151, 157
RGB Percent	88%, 59%, 62%
CMY	0.1162, 0.4065, 0.3830
CMYK	0.00, 0.33, 0.30, 0.12
HSL	355°, 56%, 74%
HSV	355°, 33%, 88%
XYZ	48.3961, 40.7494, 37.3586
YIQ	173.8100, 42.1780, 17.5540

Conversions

Conversions Part 2

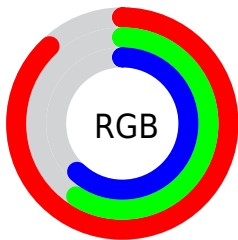
Format	Color
R_{YB}	225, 151, 157
Decimal	14784413
CIE _{Lab}	70.00, 28.57, 8.26
CIE _{LCh}	70, 29.745, 16.125
Yxy	40.7494, 0.3826, 0.3221
Android (android.graphics.Color)	4292974493 (0xFFE1979D)
YUV	173.8100, -8.2873, 44.8936
Hunter-Lab	63.8353, 23.6163, 9.9861

Details

The CIELCh color **70, 29.745, 16.125** is a light color, and the websafe version is hex **CC9999**. A complement of this color would be **85, 24.545, 190.299**, and the grayscale version is **71, 0.009, 296.813**.

A 20% lighter version of the original color is **87, 18.459, 12.746**, and **50, 29.841, 15.775** is the 20% darker color. If you saturate the color by 10%, you get **65, 39.869, 17.801**, and if you desaturate by 10%, it is **76, 20.051, 14.803**.

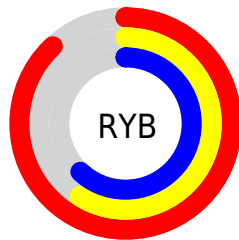
Distribution



Red (88%)

Green (59%)

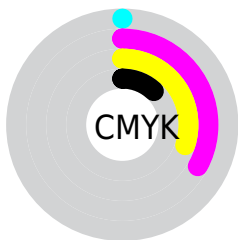
Blue (62%)



Red (88%)

Yellow (59%)

Blue (62%)

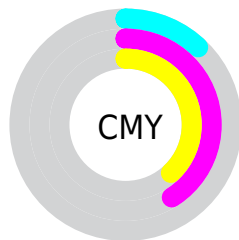


Cyan (0%)

Magenta (33%)

Yellow (30%)

Black (12%)



Cyan (12%)

Magenta (41%)

Yellow (38%)

Brightness & Saturation Gradients

These gradients show how the CIELCh color 70, 29.745, 16.125 changes by changing the brightness by 10 percent. The first figure shows a shift by +10% for each color and the second figure -10%.

Similar to the brightness gradients but the following saturation gradients show a change of the CIELCh color 70, 29.745, 16.125 by changing the saturation by 10% instead.

70, 29.745, 16.125

70, 29.745, 16.125

100, 29.745,
16.125

60, 29.745, 16.125

90, 29.745, 16.125

50, 29.745, 16.125

40, 29.745, 16.125

30, 29.745, 16.125

20, 29.745, 16.125

10, 29.745, 16.125

0, 29.745, 16.125

70, 29.745, 16.125

70, 29.745, 16.125

65, 39.869, 17.801

76, 20.051, 14.803

60, 50.229, 19.936

82, 10.904, 13.725

55, 60.526, 22.663

88, 2.336, 12.670

52, 70.406, 26.087

94, 5.659, 192.318

49, 79.513, 30.180

98, 10.054,
198.836

48, 87.396, 34.576

47, 91.905, 37.282

Harmonies

Complementary

The Complementary color scheme is a pair of colors which are on the opposite of each other on the color wheel.



70, 29.745, 16.125



85, 24.545, 190.299

Rectangle

The Rectangle color scheme consists of four colors that form a rectangle on the color wheel.



70, 29.745, 16.125



70, 29.745, 66.125



70, 29.745, 196.125



70, 29.745, 246.125

Sweetspot

The Sweet Spot groups the original color and five complimentary colors.



70, 29.743, 16.129



93, 9.293, 13.454



71, 46.388, 323.790



49, 6.371, 13.591



0, 0.000, 0.000



53, 0.007, 296.813

Same Dimension

The Same Dimension uses a secret algorithm to generate beautiful new colors.



70, 29.743, 16.129



75, 39.748, 17.156



77, 24.365, 62.420



44, 4.747, 13.394



36, 75.767, 36.617



6, 25.374, 17.530

Inverse Universe

The Inverse Universe completely reimagines the original color for something new.



70, 29.743, 16.129



75, 39.748, 17.156



77, 21.151, 250.758



44, 4.747, 13.394



36, 75.767, 36.617



6, 25.374, 17.530

Previews

White Background



This preview shows how the CIELCh color 70, 29.745, 16.125 looks on a white background.

Color Contrast Check

Large Text (above 18pt) WCAG AA × Fail

Any Text WCAG AA × Fail

Large Text (above 18pt) WCAG AAA × Fail

Any Text WCAG AAA × Fail

Black Background



This preview shows how the CIELCh color 70, 29.745, 16.125 looks on a black background.

Color Contrast Check

Large Text (above 18pt) WCAG AA ✓ Pass

Any Text WCAG AA ✓ Pass

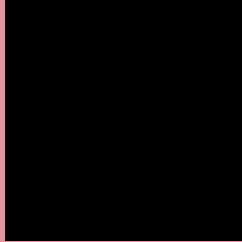
Large Text (above 18pt) WCAG AAA ✓ Pass

Any Text WCAG AAA ✓ Pass

If you want to check with other color combinations, try the [Color Contrast Checker](#).

CIELCh 70, 29.745, 16.125

Background



This preview shows how black text looks on a background with the CIELCh color 70, 29.745, 16.125.

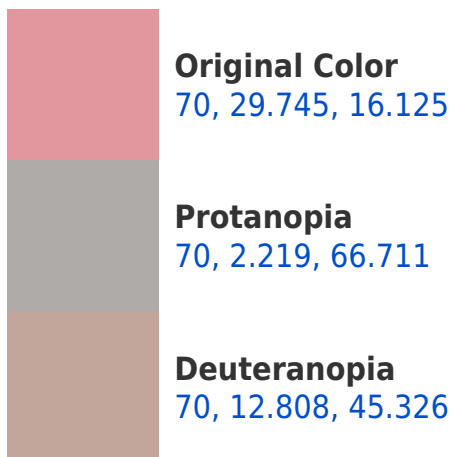


This preview shows how white text looks on a background with the CIELCh color 70, 29.745, 16.125.

Color Blindness Simulation

Color vision deficiency is a very complex topic, and I could not describe the different causes any better than Wikipedia does, so if you want to learn more, you should check out their [article about color blindness](#).

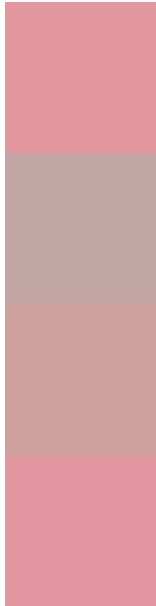
Dichromacy





Tritanopia
70, 30.179, 11.143

Trichromacy



Original Color
70, 29.745, 16.125

Protanomaly
70, 11.310, 20.377

Deuteranomaly
70, 18.154, 27.824

Tritanomaly
70, 30.136, 13.185

Monochromacy



Original Color
70, 29.745, 16.125

Achromatopsia
71, 0.009, 296.813

Achromatomaly
70, 10.497, 14.373

CSS Examples

Text

The CSS property to change the color of the text to CIELCh 70, 29.745, 16.125 is called "color". The color property can be set on classes, ids or directly on the HTML element.

This example shows how text in the color `rgb(225, 151, 157)` looks like.

```
.text, #text, p{  
    color:rgb(225, 151, 157)  
}
```

If you want to add a text shadow in that color use the text-shadow property, you can generate a text shadow directly with our [CSS Text Shadow Generator](#).

Here you see how black text with a 4 pixel rgb(225, 151, 157) colored shadow looks like.

```
.shadow{ text-shadow: 4px 4px 2px rgb(225, 151, 157) }
```

Border

The CSS property to change the border of an element to CIELCh 70, 29.745, 16.125 is called "border". The border property can be set on classes, ids or directly on the HTML element.

This example shows the color as border, it can be applied via the CSS property "border" or "border-color".

```
.border, #border, table{ border:4px solid rgb(225, 151, 157) }
```

If only the border color should be changed use the property `border-color`.

```
.border{ border-color:rgb(225, 151, 157) }
```

If you want to add a box shadow in that color use:

Here you see how a box with a 4 pixel `rgb(225, 151, 157)` colored shadow looks like.

```
.boxshadow{ -moz-box-shadow:4px 4px 4px  
4px rgb(225, 151, 157); -webkit-box-  
shadow:4px 4px 4px 4px rgb(225, 151, 157);  
box-shadow:4px 4px 4px 4px rgb(225, 151,  
157) }
```

Background

The CSS property to change the background color of an element to CIELCh 70, 29.745, 16.125 is called "background". The background property can be set on classes, ids or directly on the HTML element.

```
.background, #background, body{  
background: rgb(225, 151, 157) }
```

If only the background color should be changed can be used:

```
.background{ background-color: rgb(225,  
151, 157) }
```

This example shows the color as background, it is applied via the CSS property "background".

To optimize and compress your CSS code, you can use our [online CSS compressor and optimizer](#) based on csstidy. If you want to create a linear or radial gradient as background or border, check our [CSS Gradient Generator](#).

Hey! You found this booklet interesting? Support Converting Colors with the new Membership Option!

The pro membership hides all ads, plus gives you double the colors in the color bucket, and more awesome pro features!

[Learn more, Memberships starting at \\$2.50/m!](#)

**Follow me
on Twitter!**

@ConvertingColor