

Converting Colors

CIELCh(70, 36.208, 8.081)

Have a look what the booklet for
CIELCh(70, 36.208, 8.081) contains.

CIELCh(70, 36.064, 8.554)	3
<i>Conversions</i>	4
<i>Details</i>	6
<i>Harmonies</i>	11
<i>Previews</i>	20
<i>Color Blindness Simulation</i>	23
<i>CSS Examples</i>	26

Color

CIELCh(70, 36.064, 8.554)

Conversions

Conversions Part 1

Format	Color
Hex	EB92A3
RGB	235, 146, 163
RGB Percent	92%, 57%, 64%
CMY	0.0794, 0.4283, 0.3616
CMYK	0.00, 0.38, 0.31, 0.08
HSL	349°, 69%, 75%
HSV	349°, 38%, 92%
XYZ	51.0196, 40.7494, 39.7258
YIQ	174.5490, 47.5870, 24.1550

Conversions

Conversions Part 2

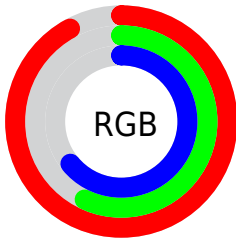
Format	Color
R _{YB}	235, 146, 163
Decimal	15438499
CIE Lab	70.00, 35.66, 5.36
CIE LCh	70, 36.064, 8.554
Yxy	40.7494, 0.3880, 0.3099
Android (android.graphics.Color)	4293628579 (0xFFEB92A3)
YUV	174.5490, -5.6937, 53.0155
Hunter-Lab	63.8353, 30.9524, 7.7875

Details

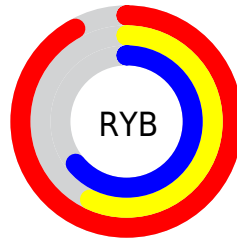
The CIELCh color $70, 36.064, 8.554$ is a light color, and the websafe version is hex `FF9999`. A complement of this color would be $87, 30.520, 180.339$, and the grayscale version is $71, 0.009, 296.813$.

A 20% lighter version of the original color is $86, 21.728, 357.122$, and $50, 35.919, 9.055$ is the 20% darker color. If you saturate the color by 10%, you get $65, 46.212, 10.495$, and if you desaturate by 10%, it is $76, 26.017, 6.993$.

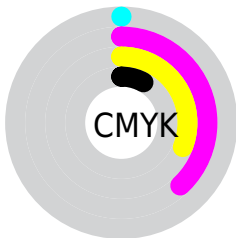
Distribution



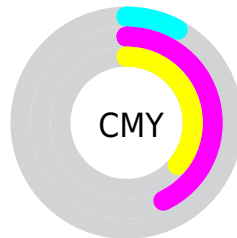
- Red (92%)
- Green (57%)
- Blue (64%)



- Red (92%)
- Yellow (57%)
- Blue (64%)



- Cyan (0%)
- Magenta (38%)
- Yellow (31%)
- Black (8%)



- Cyan (8%)
- Magenta (43%)
- Yellow (36%)

Brightness & Saturation Gradients

These gradients show how the CIELCh color 70, 36.064, 8.554 changes by changing the brightness by 10 percent. The first figure shows a shift by +10% for each color and the second figure -10%.

Similar to the brightness gradients but the following saturation gradients show a change of the CIELCh color 70, 36.064, 8.554 by changing the saturation by 10% instead.

 70, 36.064, 8.554

 70, 36.064, 8.554

 100, 36.064, 8.554

 60, 36.064, 8.554

 90, 36.064, 8.554

 50, 36.064, 8.554

 40, 36.064, 8.554

 30, 36.064, 8.554

 20, 36.064, 8.554

 10, 36.064, 8.554

 0, 36.064, 8.554

 70, 36.064, 8.554

 70, 36.064, 8.554

 65, 46.212, 10.495

 76, 26.017, 6.993

■ 60, 56.154, 12.936

■ 82, 16.291, 5.702

■ 56, 65.495, 16.035

■ 88, 7.001, 4.587

■ 53, 73.872, 19.932

■ 94, 1.805, 184.081

■ 51, 81.098, 24.665

■ 99, 6.931, 199.062

■ 49, 87.266, 29.955

■ 49, 88.532, 31.008

Harmonies

Complementary

The Complementary color scheme is a pair of colors which are on the opposite of each other on the color wheel.



70, 36.064, 8.554



87, 30.520, 180.339

Rectangle

The Rectangle color scheme consists of four colors that form a rectangle on the color wheel.



70, 36.064, 8.554



70, 36.064, 58.554



70, 36.064, 188.554



70, 36.064, 238.554

Sweetspot

The Sweet Spot groups the original color and five complimentary colors.



70, 36.061, 8.557



93, 10.514, 4.928



70, 53.815, 320.482



48, 7.091, 5.077



0, 0.000, 0.000



53, 0.007, 296.813

Same Dimension

The Same Dimension uses a secret algorithm to generate beautiful new colors.



70, 36.061, 8.557



71, 46.287, 9.929



76, 29.862, 49.428



46, 5.053, 4.757



38, 72.230, 30.033



7, 27.924, 14.829

Inverse Universe

The Inverse Universe completely reimagines the original color for something new.



70, 36.061, 8.557



71, 46.287, 9.929



80, 23.522, 235.767



46, 5.053, 4.757



38, 72.230, 30.033



7, 27.924, 14.829

Previews

White Background



This preview shows how the CIELCh color 70, 36.064, 8.554 looks on a white background.

Color Contrast Check

Large Text (above 18pt) WCAG AA × Fail

Any Text WCAG AA × Fail

Large Text (above 18pt) WCAG AAA × Fail

Any Text WCAG AAA × Fail

Black Background



This preview shows how the CIELCh color 70, 36.064, 8.554 looks on a black background.

Color Contrast Check

Large Text (above 18pt) WCAG AA ✓ Pass

Any Text WCAG AA ✓ Pass

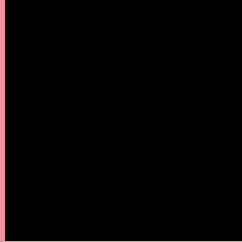
Large Text (above 18pt) WCAG AAA ✓ Pass

Any Text WCAG AAA ✓ Pass

If you want to check with other color combinations, try the [Color Contrast Checker](#).

CIELCh 70, 36.064, 8.554

Background



This preview shows how black text looks on a background with the CIELCh color 70, 36.064, 8.554.



This preview shows how white text looks on a background with the CIELCh color 70, 36.064, 8.554.

Color Blindness Simulation

Color vision deficiency is a very complex topic, and I could not describe the different causes any better than Wikipedia does, so if you want to learn more, you should check out their [article about color blindness](#).

Dichromacy



Original Color

70, 36.064, 8.554

Protanopia

70, 3.382, 303.212

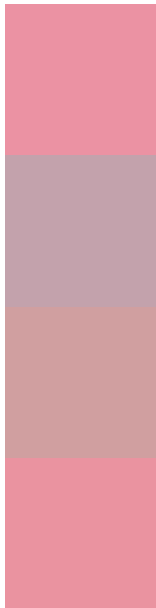
Deuteranopia

70, 11.332, 39.803



Tritanopia
70, 35.086, 13.348

Trichromacy



Original Color
70, 36.064, 8.554

Protanomaly
70, 13.779, 357.401

Deuteranomaly
70, 19.444, 19.597

Tritanomaly
70, 35.107, 11.593

Monochromacy



Original Color
70, 36.064, 8.554

Achromatopsia
71, 0.009, 296.813

Achromatomaly
70, 12.763, 5.765

CSS Examples

Text

The CSS property to change the color of the text to CIELCh 70, 36.064, 8.554 is called "color". The color property can be set on classes, ids or directly on the HTML element.

This example shows how text in the color `rgb(235, 146, 163)` looks like.

```
.text, #text, p{  
    color:rgb(235, 146, 163)  
}
```

If you want to add a text shadow in that color use the text-shadow property, you can generate a text shadow directly with our [CSS Text Shadow Generator](#).

Here you see how black text with a 4 pixel rgb(235, 146, 163) colored shadow looks like.

```
.shadow{ text-shadow: 4px 4px 2px rgb(235, 146, 163) }
```

Border

The CSS property to change the border of an element to CIELCh 70, 36.064, 8.554 is called "border". The border property can be set on classes, ids or directly on the HTML element.

This example shows the color as border, it can be applied via the CSS property "border" or "border-color".

```
.border, #border, table{ border:4px solid rgb(235, 146, 163) }
```

If only the border color should be changed use the property border-color.

```
.border{ border-color:rgb(235, 146, 163) }
```

If you want to add a box shadow in that color use:

Here you see how a box with a 4 pixel rgb(235, 146, 163) colored shadow looks like.

```
.boxshadow{ -moz-box-shadow:4px 4px 4px  
4px rgb(235, 146, 163); -webkit-box-  
shadow:4px 4px 4px 4px rgb(235, 146, 163);  
box-shadow:4px 4px 4px 4px rgb(235, 146,  
163) }
```

Background

The CSS property to change the background color of an element to CIELCh 70, 36.064, 8.554 is called "background". The background property can be set on classes, ids or directly on the HTML element.

```
.background, #background, body{  
background: rgb(235, 146, 163) }
```

If only the background color should be changed can be used:

```
.background{ background-color: rgb(235,  
146, 163) }
```

This example shows the color as background, it is applied via the CSS property "background".

To optimize and compress your CSS code, you can use our [online CSS compressor and optimizer](#) based on csstidy. If you want to create a linear or radial gradient as background or border, check our [CSS Gradient Generator](#).

Hey! You found this booklet interesting? Support Converting Colors with the new Membership Option!

The pro membership hides all ads, plus gives you double the colors in the color bucket, and more awesome pro features!

[Learn more, Memberships starting at \\$2.50/m!](#)

**Follow me
on Twitter!**

@ConvertingColor