

# Converting Colors

CIELCh(70, 38.283, 9.034)

Have a look what the booklet for  
CIELCh(70, 38.283, 9.034) contains.

<b>CIELCh(70, 38.107, 8.809)</b> .....	3
<i><b>Conversions</b></i> .....	4
<i><b>Details</b></i> .....	6
<i><b>Harmonies</b></i> .....	11
<i><b>Previews</b></i> .....	20
<i><b>Color Blindness Simulation</b></i> .....	23
<i><b>CSS Examples</b></i> .....	26

# **Color**

**CIELCh(70, 38.107, 8.809)**

# Conversions

## Conversions Part 1

Format	Color
Hex	EE90A2
RGB	238, 144, 162
RGB Percent	93%, 56%, 64%
CMY	0.0665, 0.4351, 0.3646
CMYK	0.00, 0.39, 0.32, 0.07
HSL	349°, 73%, 75%
HSV	349°, 39%, 93%
XYZ	51.7746, 40.7494, 39.3339
YIQ	174.1580, 50.2460, 25.5260

# Conversions

## Conversions Part 2

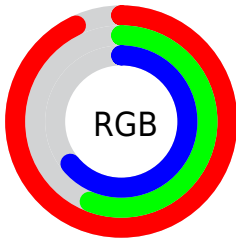
<b>Format</b>	<b>Color</b>
R <sub>Y</sub> B	238, 144, 162
Decimal	15634594
CIE Lab	70.00, 37.66, 5.84
CIE LCh	70, 38.107, 8.809
Yxy	40.7494, 0.3927, 0.3090
Android (android.graphics.Color)	4293824674 (0xFFEE90A2)
YUV	174.1580, -5.9939, 55.9894
Hunter-Lab	63.8353, 33.0636, 8.1515

# Details

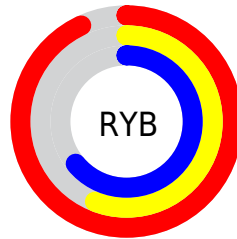
The CIELCh color **70, 38.107, 8.809** is a light color, and the websafe version is hex **FF9999**. A complement of this color would be **88, 32.005, 180.132**, and the grayscale version is **71, 0.009, 296.813**.

A 20% lighter version of the original color is **86, 22.629, 356.763**, and **50, 38.064, 8.640** is the 20% darker color. If you saturate the color by 10%, you get **65, 48.358, 10.823**, and if you desaturate by 10%, it is **76, 27.913, 7.194**.

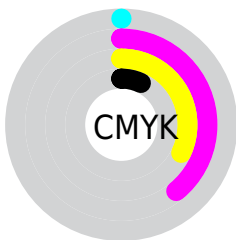
# Distribution



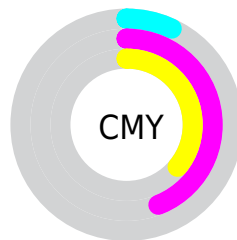
- Red (93%)
- Green (56%)
- Blue (64%)



- Red (93%)
- Yellow (56%)
- Blue (64%)



- Cyan (0%)
- Magenta (39%)
- Yellow (32%)
- Black (7%)



- Cyan (7%)
- Magenta (44%)
- Yellow (36%)

# Brightness & Saturation Gradients

These gradients show how the CIELCh color 70, 38.107, 8.809 changes by changing the brightness by 10 percent. The first figure shows a shift by +10% for each color and the second figure -10%.

Similar to the brightness gradients but the following saturation gradients show a change of the CIELCh color 70, 38.107, 8.809 by changing the saturation by 10% instead.



 70, 38.107, 8.809

 70, 38.107, 8.809

 100, 38.107, 8.809

 60, 38.107, 8.809

 90, 38.107, 8.809

 50, 38.107, 8.809

 40, 38.107, 8.809

 30, 38.107, 8.809

 20, 38.107, 8.809

 10, 38.107, 8.809

 0, 38.107, 8.809

 70, 38.107, 8.809

 70, 38.107, 8.809

 65, 48.358, 10.823

 76, 27.913, 7.194

60, 58.338, 13.363

82, 18.015, 5.864

56, 67.644, 16.586

88, 8.543, 4.729

53, 75.925, 20.626

94, 0.443, 185.184

51, 83.033, 25.488

99, 5.828, 199.150

50, 89.165, 30.772

50, 89.477, 31.024

# Harmonies

# Complementary

The Complementary color scheme is a pair of colors which are on the opposite of each other on the color wheel.



70, 38.107, 8.809



88, 32.005, 180.132

# Rectangle

The Rectangle color scheme consists of four colors that form a rectangle on the color wheel.



70, 38.107, 8.809



70, 38.107, 58.809



70, 38.107, 188.809



70, 38.107, 238.809

# Sweetspot

The Sweet Spot groups the original color and five complimentary colors.



70, 38.104, 8.812



92, 11.503, 5.007



70, 56.673, 320.548



48, 7.657, 5.152



0, 0.000, 0.000



53, 0.007, 296.813



# Same Dimension

The Same Dimension uses a secret algorithm to generate beautiful new colors.



70, 38.104, 8.812



70, 48.456, 10.316



76, 31.668, 49.368



47, 5.144, 4.728



38, 73.003, 30.062



8, 29.028, 15.943





# Inverse Universe

The Inverse Universe completely reimagines the original color for something new.



70, 38.104, 8.812



70, 48.456, 10.316



81, 24.647, 236.044



47, 5.144, 4.728



38, 73.003, 30.062



8, 29.028, 15.943



# Previews

## White Background



This preview shows how the CIELCh color 70, 38.107, 8.809 looks on a white background.

## Color Contrast Check

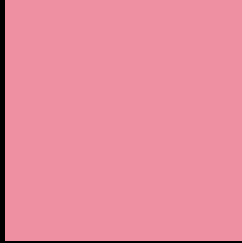
Large Text (above 18pt) WCAG AA × Fail

Any Text WCAG AA × Fail

Large Text (above 18pt) WCAG AAA × Fail

Any Text WCAG AAA × Fail

# Black Background



This preview shows how the CIE LCh color 70, 38.107, 8.809 looks on a black background.

## Color Contrast Check

Large Text (above 18pt) WCAG AA ✓ Pass

Any Text WCAG AA ✓ Pass

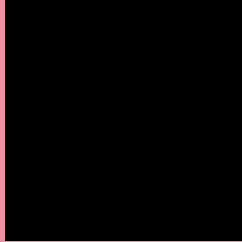
Large Text (above 18pt) WCAG AAA ✓ Pass

Any Text WCAG AAA ✓ Pass

If you want to check with other color combinations, try the [Color Contrast Checker](#).

# CIELCh 70, 38.107, 8.809

## Background



This preview shows how black text looks on a background with the CIELCh color 70, 38.107, 8.809.

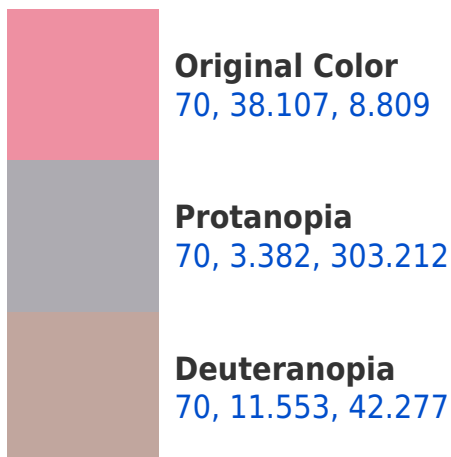


This preview shows how white text looks on a background with the CIELCh color 70, 38.107, 8.809.

# Color Blindness Simulation

Color vision deficiency is a very complex topic, and I could not describe the different causes any better than Wikipedia does, so if you want to learn more, you should check out their [article about color blindness](#).

## Dichromacy

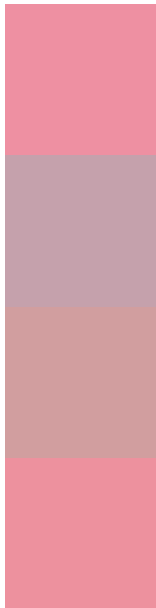




**Tritanopia**  
70, 37.160, 14.159



# Trichromacy



**Original Color**  
70, 38.107, 8.809

**Protanomaly**  
70, 15.058, 357.382

**Deuteranomaly**  
70, 20.284, 19.753

**Tritanomaly**  
70, 37.158, 12.501

# Monochromacy



**Original Color**  
70, 38.107, 8.809

**Achromatopsia**  
71, 0.009, 296.813

**Achromatomaly**  
70, 13.654, 4.484

# CSS Examples

## Text

The CSS property to change the color of the text to CIELCh 70, 38.107, 8.809 is called "color". The color property can be set on classes, ids or directly on the HTML element.

This example shows how text in the color `rgb(238, 144, 162)` looks like.

```
.text, #text, p{  
    color:rgb(238, 144, 162)  
}
```

If you want to add a text shadow in that color use the text-shadow property, you can generate a text shadow directly with our [CSS Text Shadow Generator](#).

Here you see how black text with a 4 pixel rgb(238, 144, 162) colored shadow looks like.

```
.shadow{ text-shadow: 4px 4px 2px rgb(238, 144, 162) }
```

## Border

The CSS property to change the border of an element to CIELCh 70, 38.107, 8.809 is called "border". The border property can be set on classes, ids or directly on the HTML element.

This example shows the color as border, it can be applied via the CSS property "border" or "border-color".

```
.border, #border, table{ border:4px solid rgb(238, 144, 162) }
```

If only the border color should be changed use the property `border-color`.

```
.border{ border-color:rgb(238, 144, 162) }
```

If you want to add a box shadow in that color use:

Here you see how a box with a 4 pixel `rgb(238, 144, 162)` colored shadow looks like.

```
.boxshadow{ -moz-box-shadow:4px 4px 4px  
4px rgb(238, 144, 162); -webkit-box-  
shadow:4px 4px 4px 4px rgb(238, 144, 162);  
box-shadow:4px 4px 4px 4px rgb(238, 144,  
162) }
```

# Background

The CSS property to change the background color of an element to CIELCh 70, 38.107, 8.809 is called "background". The background property can be set on classes, ids or directly on the HTML element.

```
.background, #background, body{  
background: rgb(238, 144, 162) }
```

If only the background color should be changed can be used:

```
.background{ background-color: rgb(238,  
144, 162) }
```

This example shows the color as background, it is applied via the CSS property "background".

To optimize and compress your CSS code, you can use our [online CSS compressor and optimizer](#) based on csstidy. If you want to create a linear or radial gradient as background or border, check our [CSS Gradient Generator](#).

Hey! You found this booklet interesting? Support Converting Colors with the new Membership Option!

The pro membership hides all ads, plus gives you double the colors in the color bucket, and more awesome pro features!

**[Learn more, Memberships starting at \\$2.50/m!](#)**

**Follow me  
on Twitter!**

@ConvertingColor