

Converting Colors

CIELCh(70, 48.007, 15.402)

Have a look what the booklet for
CIELCh(70, 48.007, 15.402) contains.

CIELCh(70, 47.819, 15.734)	3
<i>Conversions</i>	4
<i>Details</i>	6
<i>Harmonies</i>	11
<i>Previews</i>	20
<i>Color Blindness Simulation</i>	23
<i>CSS Examples</i>	26

Color

CIELCh(70, 47.819, 15.734)

Conversions

Conversions Part 1

Format	Color
Hex	FE8896
RGB	254, 136, 150
RGB Percent	100%, 53%, 59%
CMY	0.0050, 0.4676, 0.4127
CMYK	0.00, 0.46, 0.41, 0.01
HSL	353°, 98%, 76%
HSV	353°, 46%, 99%
XYZ	55.0240, 40.7494, 33.7169
YIQ	172.8780, 65.8340, 29.3700

Conversions

Conversions Part 2

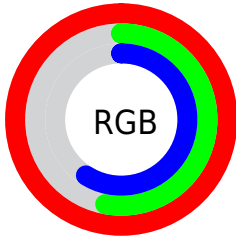
Format	Color
RYB	254, 136, 150
Decimal	16681110
CIELab	70.00, 46.03, 12.97
CIELCh	70, 47.819, 15.734
Yxy	40.7494, 0.4249, 0.3147
Android (android.graphics.Color)	4294871190 (0xFFFE8896)
YUV	172.8780, -11.2789, 71.1440
Hunter-Lab	63.8353, 42.1496, 13.3686

Details

The CIELCh color **70, 47.819, 15.734** is a light color, and the websafe version is hex **FF9999**. A complement of this color would be **93, 36.899, 185.710**, and the grayscale version is **71, 0.009, 296.813**.

A 20% lighter version of the original color is **83, 24.945, 5.711**, and **50, 47.771, 16.160** is the 20% darker color. If you saturate the color by 10%, you get **65, 58.936, 18.137**, and if you desaturate by 10%, it is **76, 36.726, 13.851**.

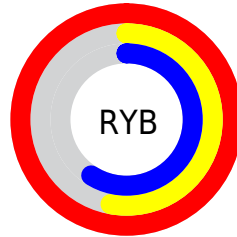
Distribution



Red (100%)

Green (53%)

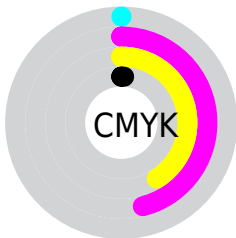
Blue (59%)



Red (100%)

Yellow (53%)

Blue (59%)

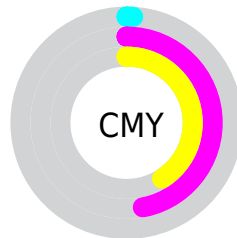


Cyan (0%)

Magenta (46%)

Yellow (41%)

Black (1%)



Cyan (1%)

Magenta (47%)

Yellow (41%)

Brightness & Saturation Gradients

These gradients show how the CIELCh color 70, 47.819, 15.734 changes by changing the brightness by 10 percent. The first figure shows a shift by +10% for each color and the second figure -10%.

Similar to the brightness gradients but the following saturation gradients show a change of the CIELCh color 70, 47.819, 15.734 by changing the saturation by 10% instead.

 70, 47.819, 15.734

 70, 47.819, 15.734

 100, 47.819,
15.734

 60, 47.819, 15.734

 90, 47.819, 15.734

 50, 47.819, 15.734

 40, 47.819, 15.734

 30, 47.819, 15.734

 20, 47.819, 15.734

 10, 47.819, 15.734

 0, 47.819, 15.734

 70, 47.819, 15.734

 70, 47.819, 15.734

 65, 58.936, 18.137

 76, 36.726, 13.851

■ 60, 69.710, 21.193

■ 82, 25.955, 12.352

■ 57, 79.748, 25.008

■ 88, 15.677, 11.134

■ 55, 88.744, 29.523

■ 95, 5.979, 10.083

■ 53, 96.366, 34.296

100, 0.446,
200.864

■ 53, 98.703, 35.769

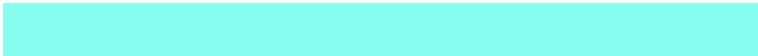
Harmonies

Complementary

The Complementary color scheme is a pair of colors which are on the opposite of each other on the color wheel.



70, 47.819, 15.734



93, 36.899, 185.710

Rectangle

The Rectangle color scheme consists of four colors that form a rectangle on the color wheel.



70, 47.819, 15.734



70, 47.819, 65.734



70, 47.819, 195.734



70, 47.819, 245.734

Sweetspot

The Sweet Spot groups the original color and five complimentary colors.



70, 47.816, 15.737



91, 13.258, 10.863



71, 70.698, 322.874



47, 9.215, 11.097



0, 0.000, 0.000



53, 0.007, 296.813

Same Dimension

The Same Dimension uses a secret algorithm to generate beautiful new colors.



70, 47.816, 15.737



65, 58.633, 18.009



79, 39.746, 55.877



50, 5.308, 10.395



40, 79.066, 34.957



10, 32.476, 22.336

Inverse Universe

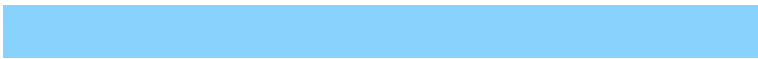
The Inverse Universe completely reimagines the original color for something new.



70, 47.816, 15.737



65, 58.633, 18.009



81, 30.783, 247.116



50, 5.308, 10.395



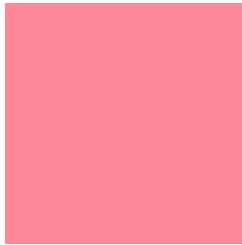
40, 79.066, 34.957



10, 32.476, 22.336

Previews

White Background



This preview shows how the CIELCh color 70, 47.819, 15.734 looks on a white background.

Color Contrast Check

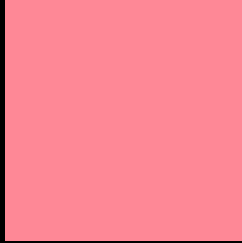
Large Text (above 18pt) WCAG AA × Fail

Any Text WCAG AA × Fail

Large Text (above 18pt) WCAG AAA × Fail

Any Text WCAG AAA × Fail

Black Background



This preview shows how the CIELCh color 70, 47.819, 15.734 looks on a black background.

Color Contrast Check

Large Text (above 18pt) WCAG AA ✓ Pass

Any Text WCAG AA ✓ Pass

Large Text (above 18pt) WCAG AAA ✓ Pass

Any Text WCAG AAA ✓ Pass

If you want to check with other color combinations, try the [Color Contrast Checker](#).

CIELCh 70, 47.819, 15.734

Background



This preview shows how black text looks on a background with the CIELCh color 70, 47.819, 15.734.

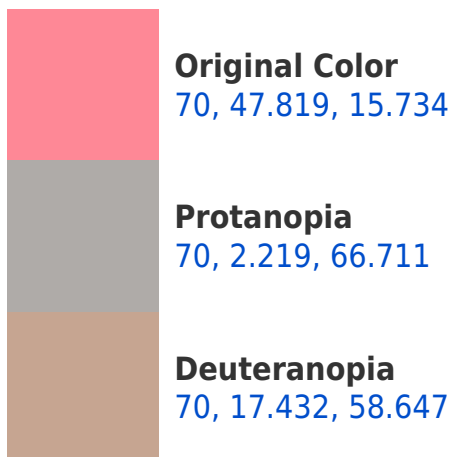


This preview shows how white text looks on a background with the CIELCh color 70, 47.819, 15.734.

Color Blindness Simulation

Color vision deficiency is a very complex topic, and I could not describe the different causes any better than Wikipedia does, so if you want to learn more, you should check out their [article about color blindness](#).

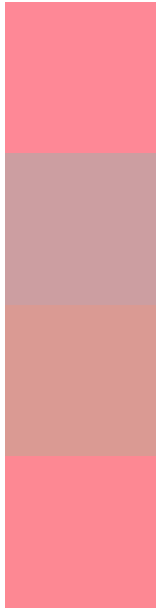
Dichromacy





Tritanopia
70, 47.638, 18.191

Trichromacy



Original Color
70, 47.819, 15.734

Protanomaly
69, 18.219, 15.983

Deuteranomaly
70, 26.570, 29.922

Tritanomaly
70, 47.575, 17.548

Monochromacy



Original Color
70, 47.819, 15.734

Achromatopsia
71, 0.009, 296.813

Achromatomaly
70, 17.102, 10.036

CSS Examples

Text

The CSS property to change the color of the text to CIELCh 70, 47.819, 15.734 is called "color". The color property can be set on classes, ids or directly on the HTML element.

This example shows how text in the color `rgb(254, 136, 150)` looks like.

```
.text, #text, p{  
    color:rgb(254, 136, 150)  
}
```

If you want to add a text shadow in that color use the text-shadow property, you can generate a text shadow directly with our [CSS Text Shadow Generator](#).

Here you see how black text with a 4 pixel rgb(254, 136, 150) colored shadow looks like.

```
.shadow{ text-shadow: 4px 4px 2px rgb(254, 136, 150) }
```

Border

The CSS property to change the border of an element to CIELCh 70, 47.819, 15.734 is called "border". The border property can be set on classes, ids or directly on the HTML element.

This example shows the color as border, it can be applied via the CSS property "border" or "border-color".

```
.border, #border, table{ border:4px solid rgb(254, 136, 150) }
```

If only the border color should be changed use the property `border-color`.

```
.border{ border-color:rgb(254, 136, 150) }
```

If you want to add a box shadow in that color use:

Here you see how a box with a 4 pixel `rgb(254, 136, 150)` colored shadow looks like.

```
.boxshadow{ -moz-box-shadow:4px 4px 4px  
4px rgb(254, 136, 150); -webkit-box-  
shadow:4px 4px 4px 4px rgb(254, 136, 150);  
box-shadow:4px 4px 4px 4px rgb(254, 136,  
150) }
```

Background

The CSS property to change the background color of an element to CIELCh 70, 47.819, 15.734 is called "background". The background property can be set on classes, ids or directly on the HTML element.

```
.background, #background, body{  
background: rgb(254, 136, 150) }
```

If only the background color should be changed can be used:

```
.background{ background-color: rgb(254,  
136, 150) }
```

This example shows the color as background, it is applied via the CSS property "background".

To optimize and compress your CSS code, you can use our [online CSS compressor and optimizer](#) based on csstidy. If you want to create a linear or radial gradient as background or border, check our [CSS Gradient Generator](#).

Hey! You found this booklet interesting? Support Converting Colors with the new Membership Option!

The pro membership hides all ads, plus gives you double the colors in the color bucket, and more awesome pro features!

[Learn more, Memberships starting at \\$2.50/m!](#)

**Follow me
on Twitter!**

@ConvertingColor