

Converting Colors

CIELCh(70, 7.168, 19.975)

Have a look what the booklet for
CIELCh(70, 7.168, 19.975) contains.

CIELCh(70, 6.929, 19.946)	3
<i>Conversions</i>	4
<i>Details</i>	6
<i>Harmonies</i>	11
<i>Previews</i>	20
<i>Color Blindness Simulation</i>	23
<i>CSS Examples</i>	26

Color

CIELCh(70, 6.929, 19.946)

Conversions

Conversions Part 1

Format	Color
Hex	B9A7A7
RGB	185, 167, 167
RGB Percent	73%, 65%, 65%
CMY	0.2745, 0.3450, 0.3450
CMYK	0.00, 0.10, 0.10, 0.27
HSL	0°, 11%, 69%
HSV	0°, 10%, 73%
XYZ	40.8088, 40.7494, 42.2809
YIQ	172.3820, 10.7280, 3.8160

Conversions

Conversions Part 2

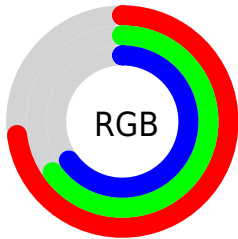
Format	Color
RYB	185, 167, 167
Decimal	12167079
CIELab	70.00, 6.51, 2.36
CIElCh	70, 6.929, 19.946
Yxy	40.7494, 0.3295, 0.3291
Android (android.graphics.Color)	4290357159 (0xFFB9A7A7)
YUV	172.3820, -2.6533, 11.0660
Hunter-Lab	63.8353, 2.4003, 5.4143

Details

The CIELCh color $70, 6.929, 19.946$ is a light color, and the websafe version is hex 999999 . A complement of this color would be $74, 6.519, 198.976$, and the grayscale version is $71, 0.009, 296.813$.

A 20% lighter version of the original color is $90, 6.914, 19.811$, and $50, 7.039, 20.168$ is the 20% darker color. If you saturate the color by 10%, you get $65, 14.607, 20.803$, and if you desaturate by 10%, it is $75, 0.185, 202.228$.

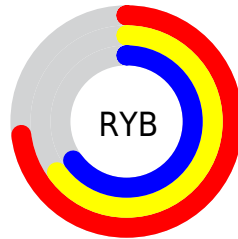
Distribution



Red (73%)

Green (65%)

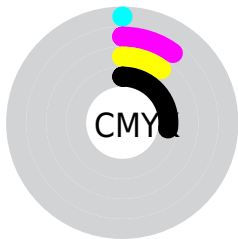
Blue (65%)



Red (73%)

Yellow (65%)

Blue (65%)

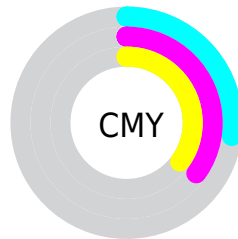


Cyan (0%)

Magenta (10%)

Yellow (10%)

Black (27%)



Cyan (27%)

Magenta (35%)

Yellow (35%)

Brightness & Saturation Gradients

These gradients show how the CIELCh color 70, 6.929, 19.946 changes by changing the brightness by 10 percent. The first figure shows a shift by +10% for each color and the second figure -10%.

Similar to the brightness gradients but the following saturation gradients show a change of the CIELCh color 70, 6.929, 19.946 by changing the saturation by 10% instead.

 70, 6.929, 19.946  70, 6.929, 19.946

 100, 6.929, 19.946  60, 6.929, 19.946

 90, 6.929, 19.946  50, 6.929, 19.946


 40, 6.929, 19.946

 30, 6.929, 19.946

 20, 6.929, 19.946

 10, 6.929, 19.946

 0, 6.929, 19.946

 70, 6.929, 19.946  70, 6.929, 19.946

 65, 14.607, 20.803  75, 0.185, 202.228

60, 22.862, 21.857

81, 6.765, 198.997

55, 31.650, 23.222

86, 12.861,
198.571

51, 40.862, 25.001

91, 18.525,
198.246

47, 50.300, 27.301

43, 59.675, 30.197

96, 22.554,
198.027

41, 68.580, 33.614

39, 76.283, 37.092

38, 82.007, 39.917

Harmonies

Complementary

The Complementary color scheme is a pair of colors which are on the opposite of each other on the color wheel.



70, 6.929, 19.946



74, 6.519, 198.976

Rectangle

The Rectangle color scheme consists of four colors that form a rectangle on the color wheel.



70, 6.929, 19.946



70, 6.929, 69.946



70, 6.929, 199.946



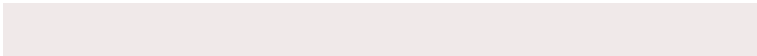
70, 6.929, 249.946

Sweetspot

The Sweet Spot groups the original color and five complimentary colors.



70, 6.928, 19.961



93, 2.569, 19.356



70, 11.943, 324.949



49, 1.952, 19.456



97, 0.011, 296.813



50, 0.007, 296.813

Same Dimension

The Same Dimension uses a secret algorithm to generate beautiful new colors.



70, 6.928, 19.961



87, 10.649, 20.156



72, 5.968, 74.190



36, 4.003, 19.930



32, 71.868, 39.601



2, 10.637, 19.416

Inverse Universe

The Inverse Universe completely reimagines the original color for something new.



74, 6.519, 198.976



93, 9.861, 198.833



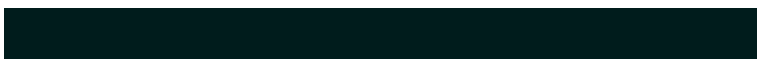
71, 5.835, 256.733



38, 3.776, 199.000



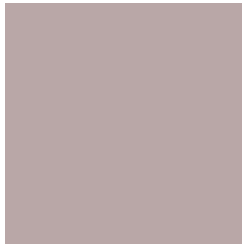
58, 34.635, 196.414



8, 10.515, 197.762

Previews

White Background



This preview shows how the CIELCh color 70, 6.929, 19.946 looks on a white background.

Color Contrast Check

Large Text (above 18pt) WCAG AA × Fail

Any Text WCAG AA × Fail

Large Text (above 18pt) WCAG AAA × Fail

Any Text WCAG AAA × Fail

Black Background



This preview shows how the CIE LCh color 70, 6.929, 19.946 looks on a black background.

Color Contrast Check

Large Text (above 18pt) WCAG AA ✓ Pass

Any Text WCAG AA ✓ Pass

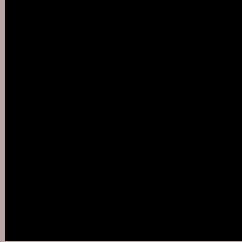
Large Text (above 18pt) WCAG AAA ✓ Pass

Any Text WCAG AAA ✓ Pass

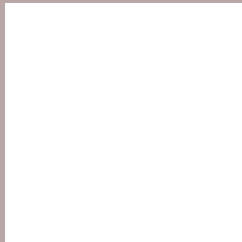
If you want to check with other color combinations, try the [Color Contrast Checker](#).

CIELCh 70, 6.929, 19.946

Background



This preview shows how black text looks on a background with the CIELCh color 70, 6.929, 19.946.



This preview shows how white text looks on a background with the CIELCh color 70, 6.929, 19.946.

Color Blindness Simulation

Color vision deficiency is a very complex topic, and I could not describe the different causes any better than Wikipedia does, so if you want to learn more, you should check out their [article about color blindness](#).

Dichromacy



Original Color

70, 6.929, 19.946

Protanopia

70, 1.968, 35.414

Deuteranopia

70, 8.902, 16.648



Tritanopia
70, 10.949, 339.925

Trichromacy



Original Color
70, 6.929, 19.946

Protanomaly
70, 3.854, 27.737

Deuteranomaly
70, 8.509, 16.446

Tritanomaly
70, 8.779, 350.342

Monochromacy



Original Color
70, 6.929, 19.946

Achromatopsia
70, 0.009, 296.813

Achromatomaly
70, 2.657, 19.451

CSS Examples

Text

The CSS property to change the color of the text to CIELCh 70, 6.929, 19.946 is called "color". The color property can be set on classes, ids or directly on the HTML element.

This example shows how text in the color `rgb(185, 167, 167)` looks like.

```
.text, #text, p{  
    color:rgb(185, 167, 167)  
}
```

If you want to add a text shadow in that color use the text-shadow property, you can generate a text shadow directly with our [CSS Text Shadow Generator](#).

Here you see how black text with a 4 pixel rgb(185, 167, 167) colored shadow looks like.

```
.shadow{ text-shadow: 4px 4px 2px rgb(185, 167, 167) }
```

Border

The CSS property to change the border of an element to CIELCh 70, 6.929, 19.946 is called "border". The border property can be set on classes, ids or directly on the HTML element.

This example shows the color as border, it can be applied via the CSS property "border" or "border-color".

```
.border, #border, table{ border:4px solid rgb(185, 167, 167) }
```

If only the border color should be changed use the property `border-color`.

```
.border{ border-color:rgb(185, 167, 167) }
```

If you want to add a box shadow in that color use:

Here you see how a box with a 4 pixel `rgb(185, 167, 167)` colored shadow looks like.

```
.boxshadow{ -moz-box-shadow:4px 4px 4px  
4px rgb(185, 167, 167); -webkit-box-  
shadow:4px 4px 4px 4px rgb(185, 167, 167);  
box-shadow:4px 4px 4px 4px rgb(185, 167,  
167) }
```

Background

The CSS property to change the background color of an element to CIELCh 70, 6.929, 19.946 is called "background". The background property can be set on classes, ids or directly on the HTML element.

```
.background, #background, body{  
background: rgb(185, 167, 167) }
```

If only the background color should be changed can be used:

```
.background{ background-color: rgb(185,  
167, 167) }
```

This example shows the color as background, it is applied via the CSS property "background".

To optimize and compress your CSS code, you can use our [online CSS compressor and optimizer](#) based on csstidy. If you want to create a linear or radial gradient as background or border, check our [CSS Gradient Generator](#).

Hey! You found this booklet interesting? Support Converting Colors with the new Membership Option!

The pro membership hides all ads, plus gives you double the colors in the color bucket, and more awesome pro features!

[Learn more, Memberships starting at \\$2.50/m!](#)

**Follow me
on Twitter!**

@ConvertingColor