

Converting Colors

CIELCh(70, 7.344, 6.981)

Have a look what the booklet for
CIELCh(70, 7.344, 6.981) contains.

CIELCh(70, 7.084, 6.640)	3
<i>Conversions</i>	4
<i>Details</i>	6
<i>Harmonies</i>	11
<i>Previews</i>	20
<i>Color Blindness Simulation</i>	23
<i>CSS Examples</i>	26

Color

CIELCh(70, 7.084, 6.640)

Conversions

Conversions Part 1

Format	Color
Hex	B9A7AA
RGB	185, 167, 170
RGB Percent	73%, 65%, 67%
CMY	0.2753, 0.3459, 0.3341
CMYK	0.00, 0.10, 0.08, 0.28
HSL	350°, 11%, 69%
HSV	350°, 10%, 72%
XYZ	40.9788, 40.7494, 43.6379
YIQ	172.7240, 9.7650, 4.7490

Conversions

Conversions Part 2

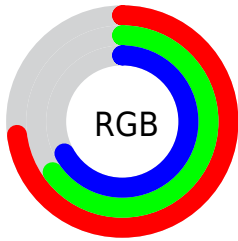
Format	Color
RYB	185, 167, 170
Decimal	12167082
CIELab	70.00, 7.04, 0.82
CIElCh	70, 7.084, 6.640
Yxy	40.7494, 0.3269, 0.3250
Android (android.graphics.Color)	4290357162 (0xFFB9A7AA)
YUV	172.7240, -1.3429, 10.7661
Hunter-Lab	63.8353, 2.8757, 4.1539

Details

The CIELCh color **70, 7.084, 6.640** is a light color, and the websafe version is hex **999999**. A complement of this color would be **74, 6.792, 185.079**, and the grayscale version is **71, 0.009, 296.813**.

A 20% lighter version of the original color is **90, 7.063, 7.141**, and **50, 7.194, 6.181** is the 20% darker color. If you saturate the color by 10%, you get **65, 14.758, 7.755**, and if you desaturate by 10%, it is **75, 0.183, 188.494**.

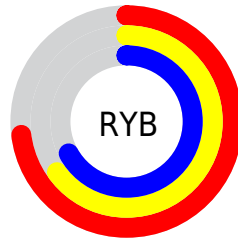
Distribution



Red (73%)

Green (65%)

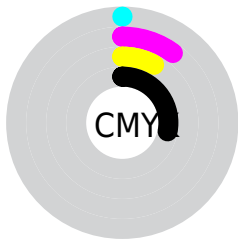
Blue (67%)



Red (73%)

Yellow (65%)

Blue (67%)

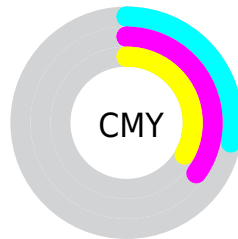


Cyan (0%)

Magenta (10%)

Yellow (8%)

Black (28%)



Cyan (28%)

Magenta (35%)

Yellow (33%)

Brightness & Saturation Gradients

These gradients show how the CIELCh color 70, 7.084, 6.640 changes by changing the brightness by 10 percent. The first figure shows a shift by +10% for each color and the second figure -10%.

Similar to the brightness gradients but the following saturation gradients show a change of the CIELCh color 70, 7.084, 6.640 by changing the saturation by 10% instead.

70, 7.084, 6.640

70, 7.084, 6.640

100, 7.084, 6.640

60, 7.084, 6.640

90, 7.084, 6.640

50, 7.084, 6.640

40, 7.084, 6.640

30, 7.084, 6.640

20, 7.084, 6.640

10, 7.084, 6.640

0, 7.084, 6.640

70, 7.084, 6.640

70, 7.084, 6.640

65, 14.758, 7.755

75, 0.183, 188.494

60, 22.804, 9.052

80, 7.034, 185.113

55, 31.125, 10.634

86, 13.490,
184.405

51, 39.551, 12.601

91, 19.579,
183.800

47, 47.831, 15.082

44, 55.658, 18.220

95, 23.474,
187.577

41, 62.754, 22.132

96, 22.616,
198.024

40, 68.967, 26.804

39, 74.454, 31.737

Harmonies

Complementary

The Complementary color scheme is a pair of colors which are on the opposite of each other on the color wheel.



70, 7.084, 6.640



74, 6.792, 185.079

Rectangle

The Rectangle color scheme consists of four colors that form a rectangle on the color wheel.



70, 7.084, 6.640



70, 7.084, 56.640



70, 7.084, 186.640



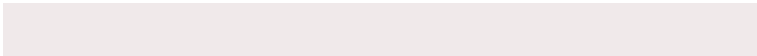
70, 7.084, 236.640

Sweetspot

The Sweet Spot groups the original color and five complimentary colors.



70, 7.082, 6.651



93, 2.647, 5.876



70, 11.358, 320.218



49, 2.009, 5.995



97, 0.011, 296.813



50, 0.007, 296.813

Same Dimension

The Same Dimension uses a secret algorithm to generate beautiful new colors.



70, 7.082, 6.651



87, 10.858, 6.911



71, 5.641, 54.859



36, 4.095, 6.609



32, 65.207, 31.097



2, 10.828, 9.388

Inverse Universe

The Inverse Universe completely reimagines the original color for something new.



70, 7.082, 6.651



87, 10.858, 6.911



72, 5.379, 236.640



36, 4.095, 6.609



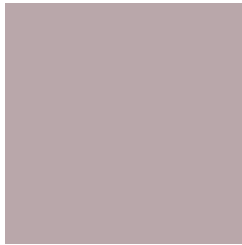
32, 65.207, 31.097



2, 10.828, 9.388

Previews

White Background



This preview shows how the CIELCh color 70, 7.084, 6.640 looks on a white background.

Color Contrast Check

Large Text (above 18pt) WCAG AA × Fail

Any Text WCAG AA × Fail

Large Text (above 18pt) WCAG AAA × Fail

Any Text WCAG AAA × Fail

Black Background



This preview shows how the CIELCh color 70, 7.084, 6.640 looks on a black background.

Color Contrast Check

Large Text (above 18pt) WCAG AA ✓ Pass

Any Text WCAG AA ✓ Pass

Large Text (above 18pt) WCAG AAA ✓ Pass

Any Text WCAG AAA ✓ Pass

If you want to check with other color combinations, try the [Color Contrast Checker](#).

CIELCh 70, 7.084, 6.640

Background



This preview shows how black text looks on a background with the CIELCh color 70, 7.084, 6.640.



This preview shows how white text looks on a background with the CIELCh color 70, 7.084, 6.640.

Color Blindness Simulation

Color vision deficiency is a very complex topic, and I could not describe the different causes any better than Wikipedia does, so if you want to learn more, you should check out their [article about color blindness](#).

Dichromacy



Original Color

70, 7.084, 6.640

Protanopia

70, 1.877, 343.640

Deuteranopia

70, 8.719, 5.685



Tritanopia
70, 10.665, 338.557

Trichromacy



Original Color
70, 7.084, 6.640

Protanomaly
70, 3.594, 1.902

Deuteranomaly
70, 8.343, 4.973

Tritanomaly
70, 9.055, 347.330

Monochromacy



Original Color
70, 7.084, 6.640

Achromatopsia
71, 0.009, 296.813

Achromatomaly
70, 2.339, 5.917

CSS Examples

Text

The CSS property to change the color of the text to CIELCh 70, 7.084, 6.640 is called "color". The color property can be set on classes, ids or directly on the HTML element.

This example shows how text in the color `rgb(185, 167, 170)` looks like.

```
.text, #text, p{  
    color:rgb(185, 167, 170)  
}
```

If you want to add a text shadow in that color use the text-shadow property, you can generate a text shadow directly with our [CSS Text Shadow Generator](#).

Here you see how black text with a 4 pixel rgb(185, 167, 170) colored shadow looks like.

```
.shadow{ text-shadow: 4px 4px 2px rgb(185, 167, 170) }
```

Border

The CSS property to change the border of an element to CIELCh 70, 7.084, 6.640 is called "border". The border property can be set on classes, ids or directly on the HTML element.

This example shows the color as border, it can be applied via the CSS property "border" or "border-color".

```
.border, #border, table{ border:4px solid rgb(185, 167, 170) }
```

If only the border color should be changed use the property `border-color`.

```
.border{ border-color:rgb(185, 167, 170) }
```

If you want to add a box shadow in that color use:

Here you see how a box with a 4 pixel `rgb(185, 167, 170)` colored shadow looks like.

```
.boxshadow{ -moz-box-shadow:4px 4px 4px  
4px rgb(185, 167, 170); -webkit-box-  
shadow:4px 4px 4px 4px rgb(185, 167, 170);  
box-shadow:4px 4px 4px 4px rgb(185, 167,  
170) }
```

Background

The CSS property to change the background color of an element to CIELCh 70, 7.084, 6.640 is called "background". The background property can be set on classes, ids or directly on the HTML element.

```
.background, #background, body{  
background: rgb(185, 167, 170) }
```

If only the background color should be changed can be used:

```
.background{ background-color: rgb(185,  
167, 170) }
```

This example shows the color as background, it is applied via the CSS property "background".

To optimize and compress your CSS code, you can use our [online CSS compressor and optimizer](#) based on csstidy. If you want to create a linear or radial gradient as background or border, check our [CSS Gradient Generator](#).

Hey! You found this booklet interesting? Support Converting Colors with the new Membership Option!

The pro membership hides all ads, plus gives you double the colors in the color bucket, and more awesome pro features!

[Learn more, Memberships starting at \\$2.50/m!](#)

**Follow me
on Twitter!**

@ConvertingColor