

Converting Colors

CIELCh(70, 7.378, 7.876)

Have a look what the booklet for
CIELCh(70, 7.378, 7.876) contains.

CIELCh(70, 6.990, 11.000)	3
<i>Conversions</i>	4
<i>Details</i>	6
<i>Harmonies</i>	11
<i>Previews</i>	20
<i>Color Blindness Simulation</i>	23
<i>CSS Examples</i>	26

Color

CIELCh(70, 6.990, 11.000)

Conversions

Conversions Part 1

Format	Color
Hex	B9A7A9
RGB	185, 167, 169
RGB Percent	73%, 65%, 66%
CMY	0.2750, 0.3456, 0.3377
CMYK	0.00, 0.10, 0.09, 0.28
HSL	353°, 11%, 69%
HSV	353°, 10%, 72%
XYZ	40.9219, 40.7494, 43.1826
YIQ	172.6100, 10.0860, 4.4380

Conversions

Conversions Part 2

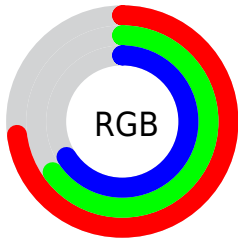
Format	Color
R_{YB}	185, 167, 169
Decimal	12167081
CIE _{Lab}	70.00, 6.86, 1.33
CIE _{LCh}	70, 6.990, 11.000
Y _{xy}	40.7494, 0.3278, 0.3264
Android (android.graphics.Color)	4290357161 (0xFFB9A7A9)
Y _{UV}	172.6100, -1.7797, 10.8660
Hunter-Lab	63.8353, 2.7166, 4.5768

Details

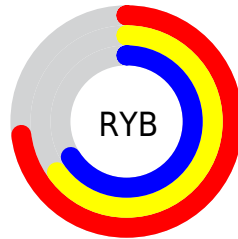
The CIELCh color $70, 6.990, 11.000$ is a light color, and the websafe version is hex 999999 . A complement of this color would be $74, 6.659, 189.576$, and the grayscale version is $71, 0.009, 296.813$.

A 20% lighter version of the original color is $90, 6.975, 11.296$, and $50, 7.094, 10.764$ is the 20% darker color. If you saturate the color by 10%, you get $65, 14.620, 12.063$, and if you desaturate by 10%, it is $75, 0.183, 192.998$.

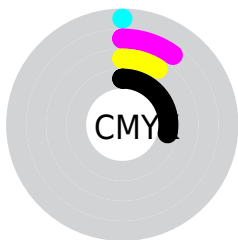
Distribution



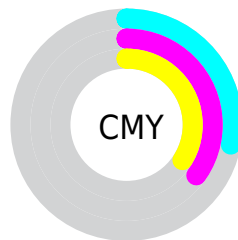
- Red (73%)
- Green (65%)
- Blue (66%)



- Red (73%)
- Yellow (65%)
- Blue (66%)



- Cyan (0%)
- Magenta (10%)
- Yellow (9%)
- Black (28%)



- Cyan (28%)
- Magenta (35%)
- Yellow (34%)

Brightness & Saturation Gradients

These gradients show how the CIELCh color 70, 6.990, 11.000 changes by changing the brightness by 10 percent. The first figure shows a shift by +10% for each color and the second figure -10%.

Similar to the brightness gradients but the following saturation gradients show a change of the CIELCh color 70, 6.990, 11.000 by changing the saturation by 10% instead.

■ 70, 6.990, 11.000 ■ 70, 6.990, 11.000

■ 100, 6.990, 11.000 ■ 60, 6.990, 11.000

■ 90, 6.990, 11.000 ■ 50, 6.990, 11.000

■ 40, 6.990, 11.000

■ 30, 6.990, 11.000

■ 20, 6.990, 11.000

■ 10, 6.990, 11.000

■ 0, 6.990, 11.000

■ 70, 6.990, 11.000 ■ 70, 6.990, 11.000

■ 65, 14.620, 12.063 ■ 75, 0.183, 192.998

60, 22.688, 13.317

81, 6.901, 189.607

55, 31.115, 14.868

86, 13.196,
188.965

51, 39.752, 16.820

91, 19.104,
188.427

47, 48.370, 19.300

44, 56.680, 22.436

95, 22.919,
192.888

41, 64.400, 26.301

96, 22.595,
198.025

39, 71.295, 30.777

38, 77.217, 35.171

Harmonies

Complementary

The Complementary color scheme is a pair of colors which are on the opposite of each other on the color wheel.



70, 6.990, 11.000



74, 6.659, 189.576

Rectangle

The Rectangle color scheme consists of four colors that form a rectangle on the color wheel.



70, 6.990, 11.000



70, 6.990, 61.000



70, 6.990, 191.000



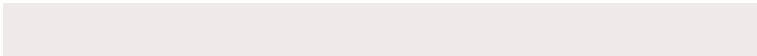
70, 6.990, 241.000

Sweetspot

The Sweet Spot groups the original color and five complimentary colors.



70, 6.988, 11.013



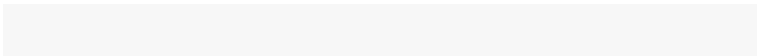
93, 2.605, 10.271



70, 11.525, 321.683



49, 1.978, 10.387



97, 0.011, 296.813



50, 0.007, 296.813

Same Dimension

The Same Dimension uses a secret algorithm to generate beautiful new colors.



70, 6.988, 11.013



87, 10.723, 11.259



72, 5.669, 60.865



36, 4.039, 10.973



32, 67.602, 34.617



2, 10.729, 12.687

Inverse Universe

The Inverse Universe completely reimagines the original color for something new.



70, 6.988, 11.013



87, 10.723, 11.259



72, 5.443, 242.974



36, 4.039, 10.973



32, 67.602, 34.617



2, 10.729, 12.687

Previews

White Background



This preview shows how the CIELCh color 70, 6.990, 11.000 looks on a white background.

Color Contrast Check

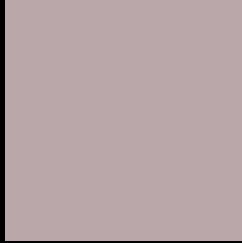
Large Text (above 18pt) WCAG AA × Fail

Any Text WCAG AA × Fail

Large Text (above 18pt) WCAG AAA × Fail

Any Text WCAG AAA × Fail

Black Background



This preview shows how the CIE LCh color 70, 6.990, 11.000 looks on a black background.

Color Contrast Check

Large Text (above 18pt) WCAG AA ✓ Pass

Any Text WCAG AA ✓ Pass

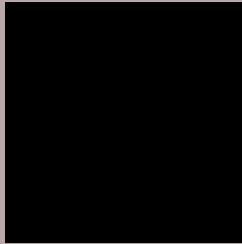
Large Text (above 18pt) WCAG AAA ✓ Pass

Any Text WCAG AAA ✓ Pass

If you want to check with other color combinations, try the [Color Contrast Checker](#).

CIELCh 70, 6.990, 11.000

Background



This preview shows how black text looks on a background with the CIELCh color 70, 6.990, 11.000.



This preview shows how white text looks on a background with the CIELCh color 70, 6.990, 11.000.

Color Blindness Simulation

Color vision deficiency is a very complex topic, and I could not describe the different causes any better than Wikipedia does, so if you want to learn more, you should check out their [article about color blindness](#).

Dichromacy



Original Color

70, 6.990, 11.000

Protanopia

70, 1.615, 359.449

Deuteranopia

70, 8.615, 9.208



Tritanopia
70, 10.665, 338.557

Trichromacy



Original Color
70, 6.990, 11.000

Protanomaly
70, 3.468, 10.518

Deuteranomaly
70, 8.232, 8.650

Tritanomaly
70, 9.055, 347.330

Monochromacy



Original Color
70, 6.990, 11.000

Achromatopsia
70, 0.009, 296.813

Achromatomaly
70, 2.713, 7.860

CSS Examples

Text

The CSS property to change the color of the text to CIELCh 70, 6.990, 11.000 is called "color". The color property can be set on classes, ids or directly on the HTML element.

This example shows how text in the color `rgb(185, 167, 169)` looks like.

```
.text, #text, p{  
    color:rgb(185, 167, 169)  
}
```

If you want to add a text shadow in that color use the text-shadow property, you can generate a text shadow directly with our [CSS Text Shadow Generator](#).

Here you see how black text with a 4 pixel rgb(185, 167, 169) colored shadow looks like.

```
.shadow{ text-shadow: 4px 4px 2px rgb(185, 167, 169) }
```

Border

The CSS property to change the border of an element to CIELCh 70, 6.990, 11.000 is called "border". The border property can be set on classes, ids or directly on the HTML element.

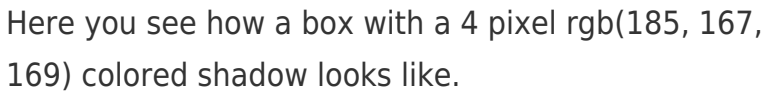
This example shows the color as border, it can be applied via the CSS property "border" or "border-color".

```
.border, #border, table{ border:4px solid rgb(185, 167, 169) }
```

If only the border color should be changed use the property `border-color`.

```
.border{ border-color:rgb(185, 167, 169) }
```

If you want to add a box shadow in that color use:



Here you see how a box with a 4 pixel `rgb(185, 167, 169)` colored shadow looks like.

```
.boxshadow{ -moz-box-shadow:4px 4px 4px  
4px rgb(185, 167, 169); -webkit-box-  
shadow:4px 4px 4px 4px rgb(185, 167, 169);  
box-shadow:4px 4px 4px 4px rgb(185, 167,  
169) }
```

Background

The CSS property to change the background color of an element to CIELCh 70, 6.990, 11.000 is called "background". The background property can be set on classes, ids or directly on the HTML element.

```
.background, #background, body{  
background: rgb(185, 167, 169) }
```

If only the background color should be changed can be used:

```
.background{ background-color: rgb(185,  
167, 169) }
```

This example shows the color as background, it is applied via the CSS property "background".

To optimize and compress your CSS code, you can use our [online CSS compressor and optimizer](#) based on csstidy. If you want to create a linear or radial gradient as background or border, check our [CSS Gradient Generator](#).

Hey! You found this booklet interesting? Support Converting Colors with the new Membership Option!

The pro membership hides all ads, plus gives you double the colors in the color bucket, and more awesome pro features!

[Learn more, Memberships starting at \\$2.50/m!](#)

**Follow me
on Twitter!**

@ConvertingColor