

Converting Colors

CIELCh(70, 8.254, 19.994)

Have a look what the booklet for
CIELCh(70, 8.254, 19.994) contains.

CIELCh(70, 8.510, 20.103)	3
<i>Conversions</i>	4
<i>Details</i>	6
<i>Harmonies</i>	11
<i>Previews</i>	20
<i>Color Blindness Simulation</i>	23
<i>CSS Examples</i>	26

Color

CIELCh(70, 8.510, 20.103)

Conversions

Conversions Part 1

Format	Color
Hex	BCA6A6
RGB	188, 166, 166
RGB Percent	74%, 65%, 65%
CMY	0.2625, 0.3488, 0.3488
CMYK	0.00, 0.12, 0.12, 0.26
HSL	0°, 14%, 69%
HSV	0°, 12%, 74%
XYZ	41.2904, 40.7494, 41.7949
YIQ	172.5780, 13.1120, 4.6640

Conversions

Conversions Part 2

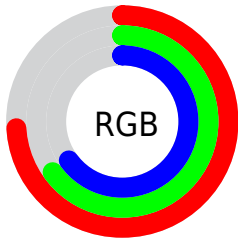
Format	Color
RYB	188, 166, 166
Decimal	12363430
CIELab	70.00, 7.99, 2.92
CIElCh	70, 8.510, 20.103
Yxy	40.7494, 0.3334, 0.3291
Android (android.graphics.Color)	4290553510 (0xFFBCA6A6)
YUV	172.5780, -3.2430, 13.5251
Hunter-Lab	63.8353, 3.7471, 5.8657

Details

The CIELCh color $70, 8.510, 20.103$ is a light color, and the websafe version is hex 999999 . A complement of this color would be $75, 7.904, 198.858$, and the grayscale version is $71, 0.009, 296.813$.

A 20% lighter version of the original color is $90, 8.402, 19.935$, and $50, 8.750, 20.385$ is the 20% darker color. If you saturate the color by 10%, you get $65, 16.408, 20.991$, and if you desaturate by 10%, it is $75, 1.189, 19.077$.

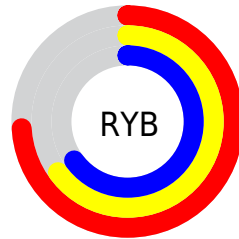
Distribution



Red (74%)

Green (65%)

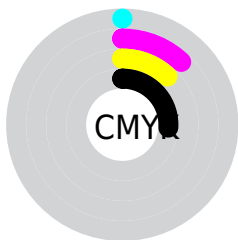
Blue (65%)



Red (74%)

Yellow (65%)

Blue (65%)

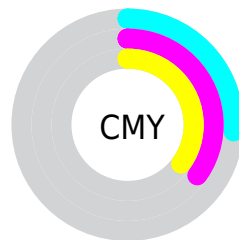


Cyan (0%)

Magenta (12%)

Yellow (12%)

Black (26%)



Cyan (26%)

Magenta (35%)


Yellow (35%)

Brightness & Saturation Gradients

These gradients show how the CIELCh color 70, 8.510, 20.103 changes by changing the brightness by 10 percent. The first figure shows a shift by +10% for each color and the second figure -10%.

Similar to the brightness gradients but the following saturation gradients show a change of the CIELCh color 70, 8.510, 20.103 by changing the saturation by 10% instead.

 70, 8.510, 20.103  70, 8.510, 20.103

 100, 8.510, 20.103  60, 8.510, 20.103

 90, 8.510, 20.103  50, 8.510, 20.103

 40, 8.510, 20.103

 30, 8.510, 20.103

 20, 8.510, 20.103

 10, 8.510, 20.103

 0, 8.510, 20.103

 70, 8.510, 20.103  70, 8.510, 20.103

 65, 16.408, 20.991  75, 1.189, 19.077

60, 24.886, 22.101

81, 5.582, 199.100

55, 33.891, 23.542

86, 11.851,
198.642

51, 43.292, 25.421

92, 17.672,
198.301

47, 52.870, 27.842

44, 62.312, 30.862

96, 21.668,
198.083

41, 71.166, 34.352

40, 78.554, 37.729

39, 83.180, 40.002

Harmonies

Complementary

The Complementary color scheme is a pair of colors which are on the opposite of each other on the color wheel.



70, 8.510, 20.103



75, 7.904, 198.858

Rectangle

The Rectangle color scheme consists of four colors that form a rectangle on the color wheel.



70, 8.510, 20.103



70, 8.510, 70.103



70, 8.510, 200.103



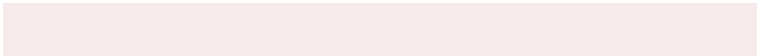
70, 8.510, 250.103

Sweetspot

The Sweet Spot groups the original color and five complimentary colors.



70, 8.509, 20.115



94, 3.498, 19.478



71, 14.569, 325.060



49, 2.492, 19.554



98, 0.011, 296.813



51, 0.007, 296.813

Same Dimension

The Same Dimension uses a secret algorithm to generate beautiful new colors.



70, 8.509, 20.115



87, 12.739, 20.321



73, 7.307, 73.958



37, 4.095, 19.930



32, 72.801, 39.667



3, 12.250, 19.414

Inverse Universe

The Inverse Universe completely reimagines the original color for something new.



75, 7.904, 198.858



94, 11.637, 198.718



72, 7.103, 257.005



39, 3.863, 198.996



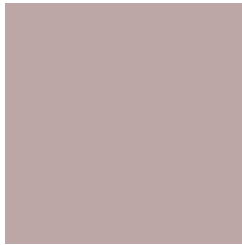
59, 35.052, 196.410



9, 11.661, 196.757

Previews

White Background



This preview shows how the CIE LCh color 70, 8.510, 20.103 looks on a white background.

Color Contrast Check

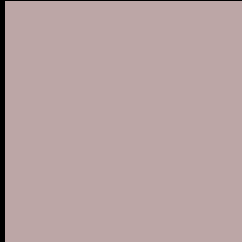
Large Text (above 18pt) WCAG AA × Fail

Any Text WCAG AA × Fail

Large Text (above 18pt) WCAG AAA × Fail

Any Text WCAG AAA × Fail

Black Background



This preview shows how the CIE LCh color 70, 8.510, 20.103 looks on a black background.

Color Contrast Check

Large Text (above 18pt) WCAG AA ✓ Pass

Any Text WCAG AA ✓ Pass

Large Text (above 18pt) WCAG AAA ✓ Pass

Any Text WCAG AAA ✓ Pass

If you want to check with other color combinations, try the [Color Contrast Checker](#).

CIELCh 70, 8.510, 20.103

Background



This preview shows how black text looks on a background with the CIELCh color 70, 8.510, 20.103.



This preview shows how white text looks on a background with the CIELCh color 70, 8.510, 20.103.

Color Blindness Simulation

Color vision deficiency is a very complex topic, and I could not describe the different causes any better than Wikipedia does, so if you want to learn more, you should check out their [article about color blindness](#).

Dichromacy



Original Color

70, 8.510, 20.103

Protanopia

70, 2.181, 49.343

Deuteranopia

70, 9.299, 20.179



Tritanopia
70, 12.153, 344.778

Trichromacy



Original Color
70, 8.510, 20.103

Protanomaly
70, 4.346, 34.164

Deuteranomaly
70, 8.904, 20.141

Tritanomaly
70, 10.151, 354.860

Monochromacy



Original Color
70, 8.510, 20.103

Achromatopsia
71, 0.009, 296.813

Achromatomaly
70, 3.039, 19.508

CSS Examples

Text

The CSS property to change the color of the text to CIELCh 70, 8.510, 20.103 is called "color". The color property can be set on classes, ids or directly on the HTML element.

This example shows how text in the color `rgb(188, 166, 166)` looks like.

```
.text, #text, p{  
    color:rgb(188, 166, 166)  
}
```

If you want to add a text shadow in that color use the text-shadow property, you can generate a text shadow directly with our [CSS Text Shadow Generator](#).

Here you see how black text with a 4 pixel rgb(188, 166, 166) colored shadow looks like.

```
.shadow{ text-shadow: 4px 4px 2px rgb(188, 166, 166) }
```

Border

The CSS property to change the border of an element to CIELCh 70, 8.510, 20.103 is called "border". The border property can be set on classes, ids or directly on the HTML element.

This example shows the color as border, it can be applied via the CSS property "border" or "border-color".

```
.border, #border, table{ border:4px solid rgb(188, 166, 166) }
```

If only the border color should be changed use the property `border-color`.

```
.border{ border-color:rgb(188, 166, 166) }
```

If you want to add a box shadow in that color use:

Here you see how a box with a 4 pixel `rgb(188, 166, 166)` colored shadow looks like.

```
.boxshadow{ -moz-box-shadow:4px 4px 4px  
4px rgb(188, 166, 166); -webkit-box-  
shadow:4px 4px 4px 4px rgb(188, 166, 166);  
box-shadow:4px 4px 4px 4px rgb(188, 166,  
166) }
```

Background

The CSS property to change the background color of an element to CIELCh 70, 8.510, 20.103 is called "background". The background property can be set on classes, ids or directly on the HTML element.

```
.background, #background, body{  
background: rgb(188, 166, 166) }
```

If only the background color should be changed can be used:

```
.background{ background-color: rgb(188,  
166, 166) }
```

This example shows the color as background, it is applied via the CSS property "background".

To optimize and compress your CSS code, you can use our [online CSS compressor and optimizer](#) based on csstidy. If you want to create a linear or radial gradient as background or border, check our [CSS Gradient Generator](#).

Hey! You found this booklet interesting? Support Converting Colors with the new Membership Option!

The pro membership hides all ads, plus gives you double the colors in the color bucket, and more awesome pro features!

[Learn more, Memberships starting at \\$2.50/m!](#)

**Follow me
on Twitter!**

@ConvertingColor