

Converting Colors

CIELCh(70, 8.656, 29.976)

Have a look what the booklet for
CIELCh(70, 8.656, 29.976) contains.

CIELCh(70, 8.617, 27.338)	3
<i>Conversions</i>	4
<i>Details</i>	6
<i>Harmonies</i>	11
<i>Previews</i>	20
<i>Color Blindness Simulation</i>	23
<i>CSS Examples</i>	26

Color

CIELCh(70, 8.617, 27.338)

Conversions

Conversions Part 1

Format	Color
Hex	BCA6A4
RGB	188, 166, 164
RGB Percent	74%, 65%, 64%
CMY	0.2619, 0.3482, 0.3561
CMYK	0.00, 0.12, 0.13, 0.26
HSL	5°, 15%, 69%
HSV	5°, 13%, 74%
XYZ	41.1803, 40.7494, 40.9107
YIQ	172.3500, 13.7540, 4.0420

Conversions

Conversions Part 2

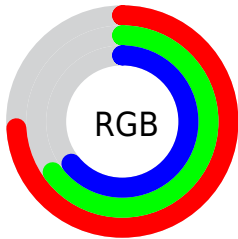
Format	Color
RYB	188, 166, 164
Decimal	12363428
CIELab	70.00, 7.65, 3.96
CIELCh	70, 8.617, 27.338
Yxy	40.7494, 0.3352, 0.3317
Android (android.graphics.Color)	4290553508 (0xFFBCA6A4)
YUV	172.3500, -4.1165, 13.7251
Hunter-Lab	63.8353, 3.4392, 6.6869

Details

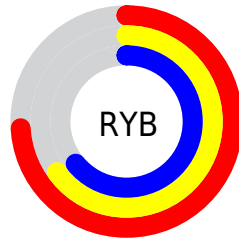
The CIELCh color $70, 8.617, 27.338$ is a light color, and the websafe version is hex 999999 . A complement of this color would be $74, 7.930, 206.743$, and the grayscale version is $71, 0.009, 296.813$.

A 20% lighter version of the original color is $90, 8.491, 26.914$, and $50, 8.886, 27.862$ is the 20% darker color. If you saturate the color by 10%, you get $65, 16.012, 27.902$, and if you desaturate by 10%, it is $75, 1.787, 26.751$.

Distribution



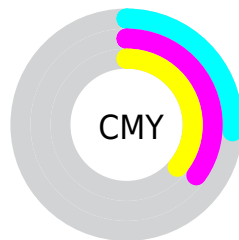
- Red (74%)
- Green (65%)
- Blue (64%)



- Red (74%)
- Yellow (65%)
- Blue (64%)



- Cyan (0%)
- Magenta (12%)
- Yellow (13%)
- Black (26%)



- Cyan (26%)
- Magenta (35%)
- Yellow (36%)

Brightness & Saturation Gradients

These gradients show how the CIELCh color 70, 8.617, 27.338 changes by changing the brightness by 10 percent. The first figure shows a shift by +10% for each color and the second figure -10%.

Similar to the brightness gradients but the following saturation gradients show a change of the CIELCh color 70, 8.617, 27.338 by changing the saturation by 10% instead.

 70, 8.617, 27.338

 70, 8.617, 27.338

 100, 8.617, 27.338

 60, 8.617, 27.338

 90, 8.617, 27.338

 50, 8.617, 27.338

 40, 8.617, 27.338

 30, 8.617, 27.338

 20, 8.617, 27.338

 10, 8.617, 27.338

 0, 8.617, 27.338

 70, 8.617, 27.338

 70, 8.617, 27.338

 65, 16.012, 27.902

 75, 1.787, 26.751

60, 23.997, 28.644

80, 4.516, 206.921

56, 32.559, 29.650

85, 10.344,
206.698

52, 41.629, 30.994

90, 15.749,
206.591

48, 51.064, 32.739

45, 60.606, 34.901

95, 20.795,
201.779

42, 69.787, 37.334

96, 21.627,
198.085

41, 77.605, 39.514

40, 82.020, 40.913

Harmonies

Complementary

The Complementary color scheme is a pair of colors which are on the opposite of each other on the color wheel.



70, 8.617, 27.338



74, 7.930, 206.743

Rectangle

The Rectangle color scheme consists of four colors that form a rectangle on the color wheel.



70, 8.617, 27.338



70, 8.617, 77.338



70, 8.617, 207.338



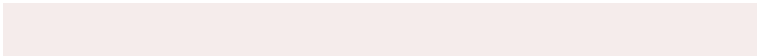
70, 8.617, 257.338

Sweetspot

The Sweet Spot groups the original color and five complimentary colors.



70, 8.616, 27.351



94, 3.229, 26.888



70, 15.023, 327.479



50, 2.301, 26.944



98, 0.011, 296.813



51, 0.007, 296.813

Same Dimension

The Same Dimension uses a secret algorithm to generate beautiful new colors.



70, 8.616, 27.351



87, 12.673, 27.475



73, 8.499, 82.231



37, 3.783, 27.188



33, 71.653, 40.860



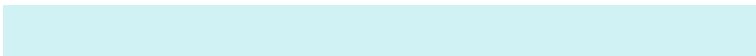
3, 11.575, 24.509

Inverse Universe

The Inverse Universe completely reimagines the original color for something new.



74, 7.930, 206.743



93, 11.463, 206.691



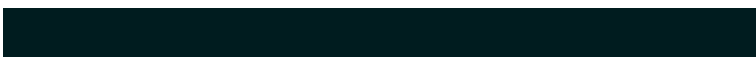
71, 8.370, 265.642



39, 3.563, 206.832



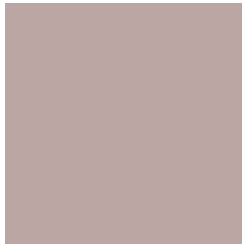
55, 31.690, 210.737



8, 10.442, 208.324

Previews

White Background



This preview shows how the CIELCh color 70, 8.617, 27.338 looks on a white background.

Color Contrast Check

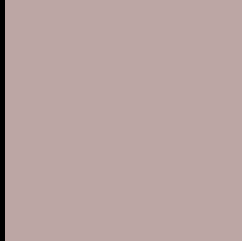
Large Text (above 18pt) WCAG AA × Fail

Any Text WCAG AA × Fail

Large Text (above 18pt) WCAG AAA × Fail

Any Text WCAG AAA × Fail

Black Background



This preview shows how the CIE LCh color 70, 8.617, 27.338 looks on a black background.

Color Contrast Check

Large Text (above 18pt) WCAG AA ✓ Pass

Any Text WCAG AA ✓ Pass

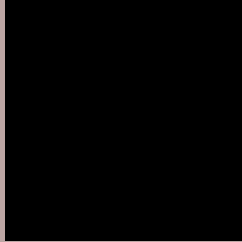
Large Text (above 18pt) WCAG AAA ✓ Pass

Any Text WCAG AAA ✓ Pass

If you want to check with other color combinations, try the [Color Contrast Checker](#).

CIELCh 70, 8.617, 27.338

Background



This preview shows how black text looks on a background with the CIELCh color 70, 8.617, 27.338.



This preview shows how white text looks on a background with the CIELCh color 70, 8.617, 27.338.

Color Blindness Simulation

Color vision deficiency is a very complex topic, and I could not describe the different causes any better than Wikipedia does, so if you want to learn more, you should check out their [article about color blindness](#).

Dichromacy



Original Color

70, 8.617, 27.338

Protanopia

70, 2.498, 60.259

Deuteranopia

70, 9.744, 23.411



Tritanopia
70, 12.153, 344.778

Trichromacy



Original Color
70, 8.617, 27.338

Protanomaly
70, 4.520, 40.836

Deuteranomaly
70, 9.348, 23.511

Tritanomaly
70, 9.943, 357.721

Monochromacy



Original Color
70, 8.617, 27.338

Achromatopsia
71, 0.009, 296.813

Achromatomaly
71, 3.085, 29.666

CSS Examples

Text

The CSS property to change the color of the text to CIELCh 70, 8.617, 27.338 is called "color". The color property can be set on classes, ids or directly on the HTML element.

This example shows how text in the color `rgb(188, 166, 164)` looks like.

```
.text, #text, p{  
    color:rgb(188, 166, 164)  
}
```

If you want to add a text shadow in that color use the text-shadow property, you can generate a text shadow directly with our [CSS Text Shadow Generator](#).

Here you see how black text with a 4 pixel rgb(188, 166, 164) colored shadow looks like.

```
.shadow{ text-shadow: 4px 4px 2px rgb(188, 166, 164) }
```

Border

The CSS property to change the border of an element to CIELCh 70, 8.617, 27.338 is called "border". The border property can be set on classes, ids or directly on the HTML element.

This example shows the color as border, it can be applied via the CSS property "border" or "border-color".

```
.border, #border, table{ border:4px solid rgb(188, 166, 164) }
```

If only the border color should be changed use the property `border-color`.

```
.border{ border-color:rgb(188, 166, 164) }
```

If you want to add a box shadow in that color use:

Here you see how a box with a 4 pixel `rgb(188, 166, 164)` colored shadow looks like.

```
.boxshadow{ -moz-box-shadow:4px 4px 4px  
4px rgb(188, 166, 164); -webkit-box-  
shadow:4px 4px 4px 4px rgb(188, 166, 164);  
box-shadow:4px 4px 4px 4px rgb(188, 166,  
164) }
```

Background

The CSS property to change the background color of an element to CIELCh 70, 8.617, 27.338 is called "background". The background property can be set on classes, ids or directly on the HTML element.

```
.background, #background, body{  
background: rgb(188, 166, 164) }
```

If only the background color should be changed can be used:

```
.background{ background-color: rgb(188,  
166, 164) }
```

This example shows the color as background, it is applied via the CSS property "background".

To optimize and compress your CSS code, you can use our [online CSS compressor and optimizer](#) based on csstidy. If you want to create a linear or radial gradient as background or border, check our [CSS Gradient Generator](#).

Hey! You found this booklet interesting? Support Converting Colors with the new Membership Option!

The pro membership hides all ads, plus gives you double the colors in the color bucket, and more awesome pro features!

[Learn more, Memberships starting at \\$2.50/m!](#)

**Follow me
on Twitter!**

@ConvertingColor