

Converting Colors

CIELCh(70, 82.107, 18.148)

Have a look what the booklet for
CIELCh(70, 82.107, 18.148) contains.

CIELCh(62, 65.524, 12.247)	3
<i>Conversions</i>	4
<i>Details</i>	6
<i>Harmonies</i>	11
<i>Previews</i>	20
<i>Color Blindness Simulation</i>	23
<i>CSS Examples</i>	26

Color

CIELCh(62, 65.524, 12.247)

Conversions

Conversions Part 1

Format	Color
Hex	FE5C80
RGB	254, 92, 128
RGB Percent	100%, 36%, 50%
CMY	0.0029, 0.6379, 0.4964
CMYK	0.00, 0.64, 0.49, 0.00
HSL	347°, 99%, 68%
HSV	347°, 64%, 100%
XYZ	48.7516, 30.4025, 23.8634
YIQ	144.5420, 84.9960, 45.5400

Conversions

Conversions Part 2

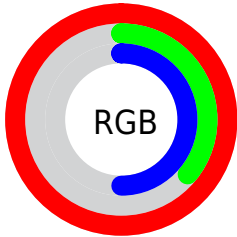
Format	Color
R _Y B	254, 92, 128
Decimal	16669824
CIE Lab	62.00, 64.03, 13.90
CIE LCh	62, 65.524, 12.247
Yxy	30.4025, 0.4732, 0.2951
Android (android.graphics.Color)	4294859904 (0xFFFE5C80)
YUV	144.5420, -8.1552, 95.9947
Hunter-Lab	55.1385, 61.3313, 12.9368

Details

The CIELCh color **62, 65.524, 12.247** is a light color, and the websafe version is hex **FF6699**. The color can be described as light muted rose. A complement of this color would be **91, 50.667, 174.506**, and the grayscale version is **60, 0.008, 296.813**.

A 20% lighter version of the original color is **74, 43.478, 1.023**, and **42, 65.591, 12.517** is the 20% darker color. If you saturate the color by 10%, you get **58, 74.532, 15.784**, and if you desaturate by 10%, it is **67, 55.496, 9.464**.

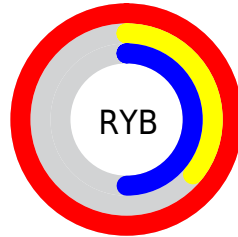
Distribution



Red (100%)

Green (36%)

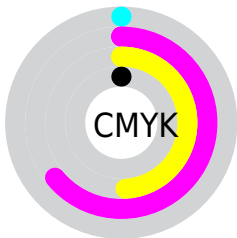
Blue (50%)



Red (100%)

Yellow (36%)

Blue (50%)

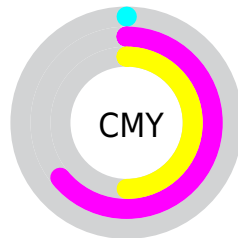


Cyan (0%)

Magenta (64%)

Yellow (49%)

Black (0%)



Cyan (0%)

Magenta (64%)

Yellow (50%)


Brightness & Saturation Gradients

These gradients show how the CIELCh color 62, 65.524, 12.247 changes by changing the brightness by 10 percent. The first figure shows a shift by +10% for each color and the second figure -10%.

Similar to the brightness gradients but the following saturation gradients show a change of the CIELCh color 62, 65.524, 12.247 by changing the saturation by 10% instead.

 62, 65.524, 12.247

 62, 65.524, 12.247

 100, 65.524,
12.247

 52, 65.524, 12.247

 82, 65.524, 12.247

 42, 65.524, 12.247

 92, 65.524, 12.247

 32, 65.524, 12.247

 22, 65.524, 12.247

 12, 65.524, 12.247

 2, 65.524, 12.247

 0, 65.524, 12.247

 62, 65.524, 12.247

 62, 65.524, 12.247

 58, 74.532, 15.784

 67, 55.496, 9.464

■ 56, 82.231, 20.191

■ 72, 44.898, 7.262

■ 54, 88.635, 25.422

■ 78, 34.141, 5.498

■ 53, 92.279, 28.884

■ 84, 23.538, 4.053

■ 91, 13.286, 2.838

■ 97, 3.491, 1.696

100, 0.253,
202.012

Harmonies

Complementary

The Complementary color scheme is a pair of colors which are on the opposite of each other on the color wheel.



62, 65.524, 12.247



91, 50.667, 174.506

Rectangle

The Rectangle color scheme consists of four colors that form a rectangle on the color wheel.



62, 65.524, 12.247



62, 65.524, 62.247



62, 65.524, 192.247



62, 65.524, 242.247

Sweetspot

The Sweet Spot groups the original color and five complimentary colors.



62, 65.520, 12.249



87, 18.726, 3.461



61, 92.655, 320.249



45, 12.972, 3.817



0, 0.000, 0.000



53, 0.007, 296.813

Same Dimension

The Same Dimension uses a secret algorithm to generate beautiful new colors.



62, 65.520, 12.249



58, 76.611, 16.728



69, 59.884, 46.048



50, 5.475, 2.374



40, 73.850, 27.840



10, 31.851, 17.543

Inverse Universe

The Inverse Universe completely reimagines the original color for something new.



62, 65.520, 12.249



58, 76.611, 16.728



80, 37.268, 236.312



50, 5.475, 2.374



40, 73.850, 27.840



10, 31.851, 17.543

Previews

White Background



This preview shows how the CIELCh color 62, 65.524, 12.247 looks on a white background.

Color Contrast Check

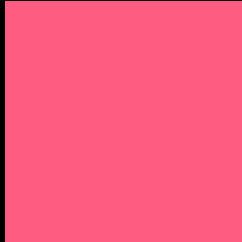
Large Text (above 18pt) WCAG AA × Fail

Any Text WCAG AA × Fail

Large Text (above 18pt) WCAG AAA × Fail

Any Text WCAG AAA × Fail

Black Background



This preview shows how the CIELCh color 62, 65.524, 12.247 looks on a black background.

Color Contrast Check

Large Text (above 18pt) WCAG AA ✓ Pass

Any Text WCAG AA ✓ Pass

Large Text (above 18pt) WCAG AAA ✓ Pass

Any Text WCAG AAA ✓ Pass

If you want to check with other color combinations, try the [Color Contrast Checker](#).

CIELCh 62, 65.524, 12.247

Background



This preview shows how black text looks on a background with the CIELCh color 62, 65.524, 12.247.



This preview shows how white text looks on a background with the CIELCh color 62, 65.524, 12.247.

Color Blindness Simulation

Color vision deficiency is a very complex topic, and I could not describe the different causes any better than Wikipedia does, so if you want to learn more, you should check out their [article about color blindness](#).

Dichromacy



Original Color

62, 65.557, 12.321

Protanopia

62, 5.076, 295.001

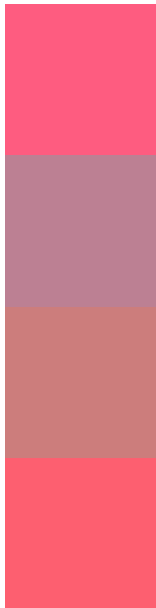
Deuteranopia

62, 18.522, 63.694



Tritanopia
62, 66.235, 25.476

Trichromacy



Original Color
62, 65.557, 12.321

Protanomaly
60, 25.962, 358.339

Deuteranomaly
61, 33.433, 24.025

Tritanomaly
62, 65.485, 20.698

Monochromacy



Original Color
62, 65.557, 12.321

Achromatopsia
60, 0.008, 296.813

Achromatomaly
59, 24.843, 5.307

CSS Examples

Text

The CSS property to change the color of the text to CIELCh 62, 65.524, 12.247 is called "color". The color property can be set on classes, ids or directly on the HTML element.

This example shows how text in the color `rgb(254, 92, 128)` looks like.

```
.text, #text, p{  
    color:rgb(254, 92, 128)  
}
```

If you want to add a text shadow in that color use the text-shadow property, you can generate a text shadow directly with our [CSS Text Shadow Generator](#).

Here you see how black text with a 4 pixel rgb(254, 92, 128) colored shadow looks like.

```
.shadow{ text-shadow: 4px 4px 2px rgb(254, 92, 128) }
```

Border

The CSS property to change the border of an element to CIELCh 62, 65.524, 12.247 is called "border". The border property can be set on classes, ids or directly on the HTML element.

This example shows the color as border, it can be applied via the CSS property "border" or "border-color".

```
.border, #border, table{ border:4px solid rgb(254, 92, 128) }
```

If only the border color should be changed use the property `border-color`.

```
.border{ border-color:rgb(254, 92, 128) }
```

If you want to add a box shadow in that color use:

Here you see how a box with a 4 pixel `rgb(254, 92, 128)` colored shadow looks like.

```
.boxshadow{ -moz-box-shadow:4px 4px 4px  
4px rgb(254, 92, 128); -webkit-box-  
shadow:4px 4px 4px 4px rgb(254, 92, 128);  
box-shadow:4px 4px 4px 4px rgb(254, 92,  
128) }
```

Background

The CSS property to change the background color of an element to CIELCh 62, 65.524, 12.247 is called "background". The background property can be set on classes, ids or directly on the HTML element.

```
.background, #background, body{  
background: rgb(254, 92, 128) }
```

If only the background color should be changed can be used:

```
.background{ background-color: rgb(254, 92,  
128) }
```

This example shows the color as background, it is applied via the CSS property "background".

To optimize and compress your CSS code, you can use our [online CSS compressor and optimizer](#) based on csstidy. If you want to create a linear or radial gradient as background or border, check our [CSS Gradient Generator](#).

Hey! You found this booklet interesting? Support Converting Colors with the new Membership Option!

The pro membership hides all ads, plus gives you double the colors in the color bucket, and more awesome pro features!

[Learn more, Memberships starting at \\$2.50/m!](#)

**Follow me
on Twitter!**

@ConvertingColor