

Converting Colors

CIELCh(71, 10.568, 57.882)

Have a look what the booklet for
CIELCh(71, 10.568, 57.882) contains.

CIELCh(71, 10.568, 57.882)	3
<i>Conversions</i>	4
<i>Details</i>	6
<i>Harmonies</i>	11
<i>Previews</i>	20
<i>Color Blindness Simulation</i>	23
<i>CSS Examples</i>	26

Color

CIELCh(71, 10.568, 57.882)

Conversions

Conversions Part 1

Format	Color
Hex	BFAA9E
RGB	191, 170, 158
RGB Percent	75%, 67%, 62%
CMY	0.2518, 0.3341, 0.3812
CMYK	0.00, 0.11, 0.17, 0.25
HSL	22°, 20%, 68%
HSV	22°, 17%, 75%
XYZ	41.9275, 42.1875, 38.1930
YIQ	174.9110, 16.3680, 0.7200

Conversions

Conversions Part 2

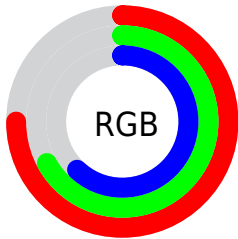
Format	Color
RYB	191, 177, 158
Decimal	12561054
CIELab	71.00, 5.62, 8.95
CIELCh	71, 10.568, 57.882
Yxy	42.1875, 0.3428, 0.3449
Android (android.graphics.Color)	4290751134 (0xFFBFAA9E)
YUV	174.9110, -8.3371, 14.1101
Hunter-Lab	64.9519, 1.5587, 10.6027

Details

The CIELCh color $71, 10.568, 57.882$ is a light color, and the websafe version is hex 999999 . A complement of this color would be $72, 9.731, 241.377$, and the grayscale version is $71, 0.009, 296.813$.

A 20% lighter version of the original color is $91, 10.556, 55.665$, and $51, 10.357, 57.896$ is the 20% darker color. If you saturate the color by 10%, you get $67, 17.266, 57.073$, and if you desaturate by 10%, it is $75, 4.307, 58.709$.

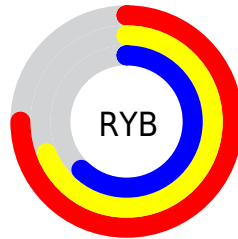
Distribution



Red (75%)

Green (67%)

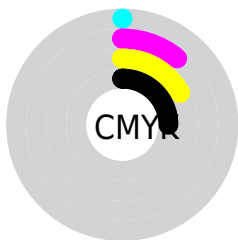
Blue (62%)



Red (75%)

Yellow (69%)

Blue (62%)

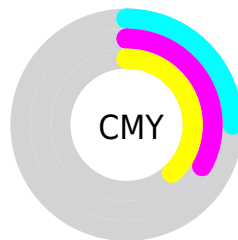


Cyan (0%)

Magenta (11%)

Yellow (17%)

Black (25%)



Cyan (25%)

Magenta (33%)

Yellow (38%)

Brightness & Saturation Gradients

These gradients show how the CIELCh color 71, 10.568, 57.882 changes by changing the brightness by 10 percent. The first figure shows a shift by +10% for each color and the second figure -10%.

Similar to the brightness gradients but the following saturation gradients show a change of the CIELCh color 71, 10.568, 57.882 by changing the saturation by 10% instead.

■ 71, 10.568, 57.882

■ 71, 10.568, 57.882

■ 100, 10.568,
57.882

■ 61, 10.568, 57.882

■ 91, 10.568, 57.882

■ 51, 10.568, 57.882

■ 41, 10.568, 57.882

■ 31, 10.568, 57.882

■ 21, 10.568, 57.882

■ 11, 10.568, 57.882

■ 1, 10.568, 57.882

■ 0, 10.568, 57.882

■ 71, 10.568, 57.882

■ 71, 10.568, 57.882

67, 17.266, 57.073

75, 4.307, 58.709

64, 24.434, 56.295

78, 1.557, 240.003

61, 32.088, 55.579

82, 7.067, 240.684

57, 40.202, 54.927

86, 12.265,
241.563

54, 48.669, 54.314

89, 17.189,
242.447

52, 57.215, 53.650

49, 65.234, 52.705

93, 17.790,
219.586

47, 71.751, 51.122

96, 20.791,
198.447

46, 73.466, 50.773

96, 20.865,
198.133

Harmonies

Complementary

The Complementary color scheme is a pair of colors which are on the opposite of each other on the color wheel.



71, 10.568, 57.882



72, 9.731, 241.377

Rectangle

The Rectangle color scheme consists of four colors that form a rectangle on the color wheel.



71, 10.568, 57.882



71, 10.568, 107.882



71, 10.568, 237.882



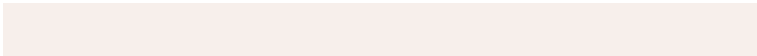
71, 10.568, 287.882

Sweetspot

The Sweet Spot groups the original color and five complimentary colors.



71, 10.568, 57.895



95, 3.619, 58.860



69, 17.117, 337.626



51, 2.495, 58.815



99, 0.012, 296.813



52, 0.007, 296.813

Same Dimension

The Same Dimension uses a secret algorithm to generate beautiful new colors.



71, 10.568, 57.895



88, 16.068, 57.559



75, 15.158, 101.357



38, 3.341, 58.550



38, 63.609, 51.309



5, 10.148, 45.735

Inverse Universe

The Inverse Universe completely reimagines the original color for something new.



72, 9.731, 241.377



89, 14.480, 241.910



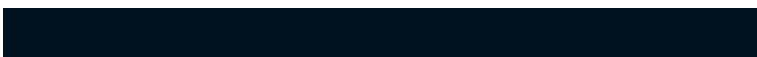
67, 15.545, 285.358



38, 3.205, 240.475



41, 38.053, 266.360



5, 10.129, 254.283

Previews

White Background



This preview shows how the CIELCh color 71, 10.568, 57.882 looks on a white background.

Color Contrast Check

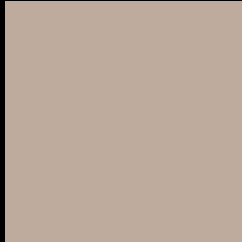
Large Text (above 18pt) WCAG AA × Fail

Any Text WCAG AA × Fail

Large Text (above 18pt) WCAG AAA × Fail

Any Text WCAG AAA × Fail

Black Background



This preview shows how the CIELCh color 71, 10.568, 57.882 looks on a black background.

Color Contrast Check

Large Text (above 18pt) WCAG AA ✓ Pass

Any Text WCAG AA ✓ Pass

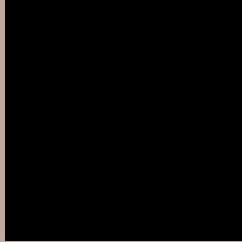
Large Text (above 18pt) WCAG AAA ✓ Pass

Any Text WCAG AAA ✓ Pass

If you want to check with other color combinations, try the [Color Contrast Checker](#).

CIELCh 71, 10.568, 57.882

Background



This preview shows how black text looks on a background with the CIELCh color 71, 10.568, 57.882.



This preview shows how white text looks on a background with the CIELCh color 71, 10.568, 57.882.

Color Blindness Simulation

Color vision deficiency is a very complex topic, and I could not describe the different causes any better than Wikipedia does, so if you want to learn more, you should check out their [article about color blindness](#).

Dichromacy



Original Color

71, 10.568, 57.882

Protanopia

71, 7.564, 88.364

Deuteranopia

71, 12.390, 46.108



Tritanopia
71, 12.425, 345.831

Trichromacy



Original Color
71, 10.568, 57.882

Protanomaly
71, 8.482, 75.845

Deuteranomaly
71, 11.588, 51.005

Tritanomaly
71, 9.834, 7.501

Monochromacy



Original Color
71, 10.568, 57.882

Achromatopsia
71, 0.009, 296.813

Achromatomaly
71, 3.735, 55.059

CSS Examples

Text

The CSS property to change the color of the text to CIELCh 71, 10.568, 57.882 is called "color". The color property can be set on classes, ids or directly on the HTML element.

This example shows how text in the color `rgb(191, 170, 158)` looks like.

```
.text, #text, p{  
    color:rgb(191, 170, 158)  
}
```

If you want to add a text shadow in that color use the text-shadow property, you can generate a text shadow directly with our [CSS Text Shadow Generator](#).

Here you see how black text with a 4 pixel rgb(191, 170, 158) colored shadow looks like.

```
.shadow{ text-shadow: 4px 4px 2px rgb(191, 170, 158) }
```

Border

The CSS property to change the border of an element to CIELCh 71, 10.568, 57.882 is called "border". The border property can be set on classes, ids or directly on the HTML element.

This example shows the color as border, it can be applied via the CSS property "border" or "border-color".

```
.border, #border, table{ border:4px solid rgb(191, 170, 158) }
```

If only the border color should be changed use the property `border-color`.

```
.border{ border-color:rgb(191, 170, 158) }
```

If you want to add a box shadow in that color use:

Here you see how a box with a 4 pixel `rgb(191, 170, 158)` colored shadow looks like.

```
.boxshadow{ -moz-box-shadow:4px 4px 4px  
4px rgb(191, 170, 158); -webkit-box-  
shadow:4px 4px 4px 4px rgb(191, 170, 158);  
box-shadow:4px 4px 4px 4px rgb(191, 170,  
158) }
```

Background

The CSS property to change the background color of an element to CIELCh 71, 10.568, 57.882 is called "background". The background property can be set on classes, ids or directly on the HTML element.

```
.background, #background, body{  
background: rgb(191, 170, 158) }
```

If only the background color should be changed can be used:

```
.background{ background-color: rgb(191,  
170, 158) }
```

This example shows the color as background, it is applied via the CSS property "background".

To optimize and compress your CSS code, you can use our [online CSS compressor and optimizer](#) based on csstidy. If you want to create a linear or radial gradient as background or border, check our [CSS Gradient Generator](#).

Hey! You found this booklet interesting? Support Converting Colors with the new Membership Option!

The pro membership hides all ads, plus gives you double the colors in the color bucket, and more awesome pro features!

[Learn more, Memberships starting at \\$2.50/m!](#)

**Follow me
on Twitter!**

@ConvertingColor