

Converting Colors

CIELCh(71, 10.765, 16.236)

Have a look what the booklet for
CIELCh(71, 10.765, 16.236) contains.

CIELCh(71, 10.876, 14.621)	3
<i>Conversions</i>	4
<i>Details</i>	6
<i>Harmonies</i>	11
<i>Previews</i>	20
<i>Color Blindness Simulation</i>	23
<i>CSS Examples</i>	26

Color

CIELCh(71, 10.876, 14.621)

Conversions

Conversions Part 1

Format	Color
Hex	C3A7A9
RGB	195, 167, 169
RGB Percent	76%, 65%, 66%
CMY	0.2347, 0.3445, 0.3366
CMYK	0.00, 0.14, 0.13, 0.23
HSL	356°, 19%, 71%
HSV	356°, 14%, 77%
XYZ	43.5694, 42.1875, 43.4587
YIQ	175.6000, 16.0460, 6.5580

Conversions

Conversions Part 2

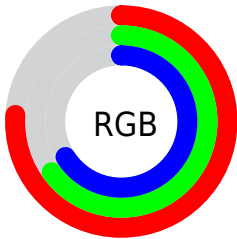
Format	Color
RYB	195, 167, 169
Decimal	12822441
CIELab	71.00, 10.52, 2.75
CIElCh	71, 10.876, 14.621
Yxy	42.1875, 0.3372, 0.3265
Android (android.graphics.Color)	4291012521 (0xFFC3A7A9)
YUV	175.6000, -3.2538, 17.0138
Hunter-Lab	64.9519, 6.0711, 5.7959

Details

The CIELCh color **71, 10.876, 14.621** is a light color, and the websafe version is hex **CC9999**. A complement of this color would be **77, 10.046, 192.527**, and the grayscale version is **72, 0.009, 296.813**.

A 20% lighter version of the original color is **91, 11.013, 14.782**, and **51, 10.859, 14.554** is the 20% darker color. If you saturate the color by 10%, you get **66, 19.086, 15.710**, and if you desaturate by 10%, it is **76, 3.183, 13.655**.

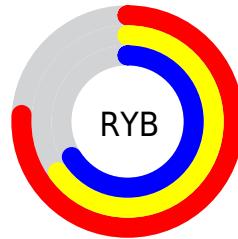
Distribution



Red (76%)

Green (65%)

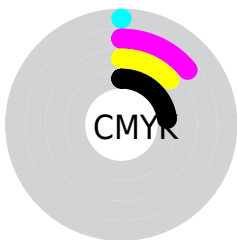
Blue (66%)



Red (76%)

Yellow (65%)

Blue (66%)

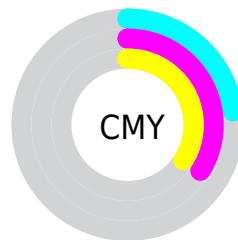


Cyan (0%)

Magenta (14%)

Yellow (13%)

Black (23%)



Cyan (23%)

Magenta (34%)

Yellow (34%)


Brightness & Saturation Gradients

These gradients show how the CIELCh color 71, 10.876, 14.621 changes by changing the brightness by 10 percent. The first figure shows a shift by +10% for each color and the second figure -10%.

Similar to the brightness gradients but the following saturation gradients show a change of the CIELCh color 71, 10.876, 14.621 by changing the saturation by 10% instead.

 71, 10.876, 14.621

 71, 10.876, 14.621

 100, 10.876,
14.621

 61, 10.876, 14.621

 91, 10.876, 14.621

 51, 10.876, 14.621

 41, 10.876, 14.621

 31, 10.876, 14.621

 21, 10.876, 14.621

 11, 10.876, 14.621

 1, 10.876, 14.621

 0, 10.876, 14.621

 71, 10.876, 14.621

 71, 10.876, 14.621

66, 19.086, 15.710

76, 3.183, 13.655

61, 27.783, 17.046

82, 3.992, 193.250

56, 36.865, 18.737

88, 10.682,
192.579

51, 46.150, 20.896

93, 16.929,
192.062

48, 55.372, 23.649

45, 64.220, 27.084

96, 19.566,
198.215

42, 72.365, 31.138

41, 79.332, 35.379

41, 82.563, 37.337

Harmonies

Complementary

The Complementary color scheme is a pair of colors which are on the opposite of each other on the color wheel.



71, 10.876, 14.621



77, 10.046, 192.527

Rectangle

The Rectangle color scheme consists of four colors that form a rectangle on the color wheel.



71, 10.876, 14.621



71, 10.876, 64.621



71, 10.876, 194.621



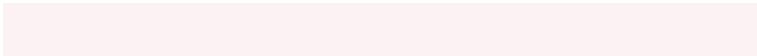
71, 10.876, 244.621

Sweetspot

The Sweet Spot groups the original color and five complimentary colors.



71, 10.874, 14.630



96, 3.607, 13.621



72, 17.982, 322.874



51, 2.591, 13.709



0, 0.000, 0.000



53, 0.007, 296.813

Same Dimension

The Same Dimension uses a secret algorithm to generate beautiful new colors.



71, 10.874, 14.630



88, 16.039, 14.924



74, 8.937, 64.339



38, 4.199, 14.154



33, 70.969, 36.762



3, 14.045, 15.513

Inverse Universe

The Inverse Universe completely reimagines the original color for something new.



71, 10.874, 14.630



88, 16.039, 14.924



74, 8.455, 247.676



38, 4.199, 14.154



33, 70.969, 36.762



3, 14.045, 15.513

Previews

White Background



This preview shows how the CIELCh color 71, 10.876, 14.621 looks on a white background.

Color Contrast Check

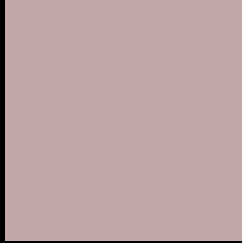
Large Text (above 18pt) WCAG AA × Fail

Any Text WCAG AA × Fail

Large Text (above 18pt) WCAG AAA × Fail

Any Text WCAG AAA × Fail

Black Background



This preview shows how the CIELCh color 71, 10.876, 14.621 looks on a black background.

Color Contrast Check

Large Text (above 18pt) WCAG AA ✓ Pass

Any Text WCAG AA ✓ Pass

Large Text (above 18pt) WCAG AAA ✓ Pass

Any Text WCAG AAA ✓ Pass

If you want to check with other color combinations, try the [Color Contrast Checker](#).

CIELCh 71, 10.876, 14.621

Background



This preview shows how black text looks on a background with the CIELCh color 71, 10.876, 14.621.



This preview shows how white text looks on a background with the CIELCh color 71, 10.876, 14.621.

Color Blindness Simulation

Color vision deficiency is a very complex topic, and I could not describe the different causes any better than Wikipedia does, so if you want to learn more, you should check out their [article about color blindness](#).

Dichromacy



Original Color

71, 10.876, 14.621

Protanopia

71, 1.509, 19.206

Deuteranopia

71, 9.665, 16.999



Tritanopia
71, 13.392, 348.770

Trichromacy



Original Color
71, 10.876, 14.621

Protanomaly
71, 4.981, 13.479

Deuteranomaly
71, 10.059, 17.164

Tritanomaly
71, 12.459, 357.430

Monochromacy



Original Color
71, 10.876, 14.621

Achromatopsia
72, 0.009, 296.813

Achromatomaly
72, 3.830, 11.456

CSS Examples

Text

The CSS property to change the color of the text to CIELCh 71, 10.876, 14.621 is called "color". The color property can be set on classes, ids or directly on the HTML element.

This example shows how text in the color `rgb(195, 167, 169)` looks like.

```
.text, #text, p{  
    color:rgb(195, 167, 169)  
}
```

If you want to add a text shadow in that color use the text-shadow property, you can generate a text shadow directly with our [CSS Text Shadow Generator](#).

Here you see how black text with a 4 pixel rgb(195, 167, 169) colored shadow looks like.

```
.shadow{ text-shadow: 4px 4px 2px rgb(195, 167, 169) }
```

Border

The CSS property to change the border of an element to CIELCh 71, 10.876, 14.621 is called "border". The border property can be set on classes, ids or directly on the HTML element.

This example shows the color as border, it can be applied via the CSS property "border" or "border-color".

```
.border, #border, table{ border:4px solid rgb(195, 167, 169) }
```

If only the border color should be changed use the property `border-color`.

```
.border{ border-color:rgb(195, 167, 169) }
```

If you want to add a box shadow in that color use:

Here you see how a box with a 4 pixel `rgb(195, 167, 169)` colored shadow looks like.

```
.boxshadow{ -moz-box-shadow:4px 4px 4px  
4px rgb(195, 167, 169); -webkit-box-  
shadow:4px 4px 4px 4px rgb(195, 167, 169);  
box-shadow:4px 4px 4px 4px rgb(195, 167,  
169) }
```

Background

The CSS property to change the background color of an element to CIELCh 71, 10.876, 14.621 is called "background". The background property can be set on classes, ids or directly on the HTML element.

```
.background, #background, body{  
background: rgb(195, 167, 169) }
```

If only the background color should be changed can be used:

```
.background{ background-color: rgb(195,  
167, 169) }
```

This example shows the color as background, it is applied via the CSS property "background".

To optimize and compress your CSS code, you can use our [online CSS compressor and optimizer](#) based on csstidy. If you want to create a linear or radial gradient as background or border, check our [CSS Gradient Generator](#).

Hey! You found this booklet interesting? Support Converting Colors with the new Membership Option!

The pro membership hides all ads, plus gives you double the colors in the color bucket, and more awesome pro features!

[Learn more, Memberships starting at \\$2.50/m!](#)

**Follow me
on Twitter!**

@ConvertingColor