

Converting Colors

CIELCh(71, 10.860, 17.471)

Have a look what the booklet for
CIELCh(71, 10.860, 17.471) contains.

CIELCh(71, 10.860, 17.471)	3
<i>Conversions</i>	4
<i>Details</i>	6
<i>Harmonies</i>	11
<i>Previews</i>	20
<i>Color Blindness Simulation</i>	23
<i>CSS Examples</i>	26

Color

CIELCh(71, 10.860, 17.471)

Conversions

Conversions Part 1

Format	Color
Hex	C3A7A8
RGB	195, 167, 168
RGB Percent	76%, 65%, 66%
CMY	0.2344, 0.3442, 0.3403
CMYK	0.00, 0.14, 0.14, 0.23
HSL	358°, 19%, 71%
HSV	358°, 14%, 77%
XYZ	43.5136, 42.1875, 43.0043
YIQ	175.4860, 16.3670, 6.2470

Conversions

Conversions Part 2

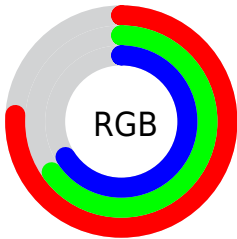
Format	Color
R _{YB}	195, 167, 168
Decimal	12822440
CIE _{Lab}	71.00, 10.36, 3.26
CIE _{LCh}	71, 10.860, 17.471
Yxy	42.1875, 0.3381, 0.3278
Android (android.graphics.Color)	4291012520 (0xFFC3A7A8)
YUV	175.4860, -3.6906, 17.1138
Hunter-Lab	64.9519, 5.9177, 6.2107

Details

The CIELCh color $71, 10.860, 17.471$ is a light color, and the websafe version is hex `CC9999`. A complement of this color would be $77, 9.969, 195.598$, and the grayscale version is $72, 0.009, 296.813$.

A 20% lighter version of the original color is $91, 10.995, 17.458$, and $51, 10.848, 17.596$ is the 20% darker color. If you saturate the color by 10%, you get $66, 19.109, 18.493$, and if you desaturate by 10%, it is $76, 3.170, 16.573$.

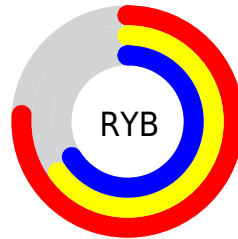
Distribution



Red (76%)

Green (65%)

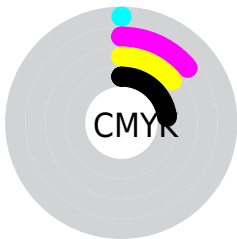
Blue (66%)



Red (76%)

Yellow (65%)

Blue (66%)

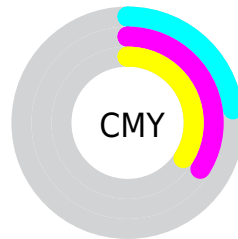


Cyan (0%)

Magenta (14%)

Yellow (14%)

Black (23%)



Cyan (23%)

Magenta (34%)

Yellow (34%)

Brightness & Saturation Gradients

These gradients show how the CIELCh color 71, 10.860, 17.471 changes by changing the brightness by 10 percent. The first figure shows a shift by +10% for each color and the second figure -10%.

Similar to the brightness gradients but the following saturation gradients show a change of the CIELCh color 71, 10.860, 17.471 by changing the saturation by 10% instead.

71, 10.860, 17.471

71, 10.860, 17.471

100, 10.860,
17.471

61, 10.860, 17.471

91, 10.860, 17.471

51, 10.860, 17.471

41, 10.860, 17.471

31, 10.860, 17.471

21, 10.860, 17.471

11, 10.860, 17.471

1, 10.860, 17.471

0, 10.860, 17.471

71, 10.860, 17.471

71, 10.860, 17.471

66, 19.109, 18.493

76, 3.170, 16.573

61, 27.898, 19.766

82, 3.973, 196.245

56, 37.137, 21.398

88, 10.607,
195.643

51, 46.656, 23.501

93, 16.780,
195.196

48, 56.200, 26.189

45, 65.440, 29.520

96, 19.545,
198.216

42, 73.963, 33.361

41, 81.006, 37.120

41, 84.001, 38.664

Harmonies

Complementary

The Complementary color scheme is a pair of colors which are on the opposite of each other on the color wheel.



71, 10.860, 17.471



77, 9.969, 195.598

Rectangle

The Rectangle color scheme consists of four colors that form a rectangle on the color wheel.



71, 10.860, 17.471



71, 10.860, 67.471



71, 10.860, 197.471



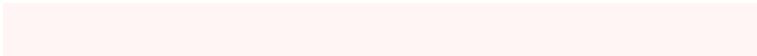
71, 10.860, 247.471

Sweetspot

The Sweet Spot groups the original color and five complimentary colors.



71, 10.858, 17.481



97, 3.622, 16.542



72, 18.161, 323.820



51, 2.581, 16.625



0, 0.000, 0.000



53, 0.007, 296.813

Same Dimension

The Same Dimension uses a secret algorithm to generate beautiful new colors.



71, 10.858, 17.481



88, 16.158, 17.756



74, 9.051, 68.147



38, 4.188, 17.039



33, 72.330, 38.277



3, 14.014, 17.460

Inverse Universe

The Inverse Universe completely reimagines the original color for something new.



71, 10.858, 17.481



88, 16.158, 17.756



73, 8.630, 251.693



38, 4.188, 17.039



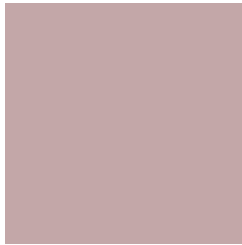
33, 72.330, 38.277



3, 14.014, 17.460

Previews

White Background



This preview shows how the CIELCh color 71, 10.860, 17.471 looks on a white background.

Color Contrast Check

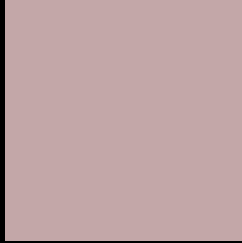
Large Text (above 18pt) WCAG AA × Fail

Any Text WCAG AA × Fail

Large Text (above 18pt) WCAG AAA × Fail

Any Text WCAG AAA × Fail

Black Background



This preview shows how the CIELCh color 71, 10.860, 17.471 looks on a black background.

Color Contrast Check

Large Text (above 18pt) WCAG AA ✓ Pass

Any Text WCAG AA ✓ Pass

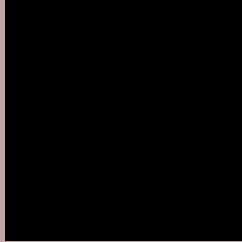
Large Text (above 18pt) WCAG AAA ✓ Pass

Any Text WCAG AAA ✓ Pass

If you want to check with other color combinations, try the [Color Contrast Checker](#).

CIELCh 71, 10.860, 17.471

Background



This preview shows how black text looks on a background with the CIELCh color 71, 10.860, 17.471.



This preview shows how white text looks on a background with the CIELCh color 71, 10.860, 17.471.

Color Blindness Simulation

Color vision deficiency is a very complex topic, and I could not describe the different causes any better than Wikipedia does, so if you want to learn more, you should check out their [article about color blindness](#).

Dichromacy



Original Color

71, 10.860, 17.471

Protanopia

71, 1.599, 39.110

Deuteranopia

71, 9.671, 20.206



Tritanopia
71, 13.718, 349.662

Trichromacy



Original Color
71, 10.860, 17.471

Protanomaly
71, 4.958, 19.735

Deuteranomaly
71, 10.066, 20.243

Tritanomaly
71, 12.459, 357.430

Monochromacy



Original Color
71, 10.860, 17.471

Achromatopsia
72, 0.009, 296.813

Achromatomaly
72, 3.794, 19.600

CSS Examples

Text

The CSS property to change the color of the text to CIELCh 71, 10.860, 17.471 is called "color". The color property can be set on classes, ids or directly on the HTML element.

This example shows how text in the color `rgb(195, 167, 168)` looks like.

```
.text, #text, p{  
    color:rgb(195, 167, 168)  
}
```

If you want to add a text shadow in that color use the text-shadow property, you can generate a text shadow directly with our [CSS Text Shadow Generator](#).

Here you see how black text with a 4 pixel rgb(195, 167, 168) colored shadow looks like.

```
.shadow{ text-shadow: 4px 4px 2px rgb(195, 167, 168) }
```

Border

The CSS property to change the border of an element to CIELCh 71, 10.860, 17.471 is called "border". The border property can be set on classes, ids or directly on the HTML element.

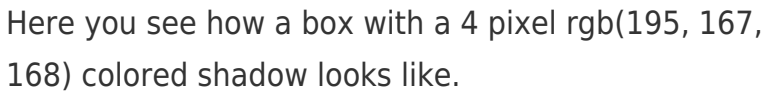
This example shows the color as border, it can be applied via the CSS property "border" or "border-color".

```
.border, #border, table{ border:4px solid rgb(195, 167, 168) }
```

If only the border color should be changed use the property `border-color`.

```
.border{ border-color:rgb(195, 167, 168) }
```

If you want to add a box shadow in that color use:



Here you see how a box with a 4 pixel `rgb(195, 167, 168)` colored shadow looks like.

```
.boxshadow{ -moz-box-shadow:4px 4px 4px 4px rgb(195, 167, 168); -webkit-box-shadow:4px 4px 4px 4px rgb(195, 167, 168); box-shadow:4px 4px 4px 4px rgb(195, 167, 168) }
```

Background

The CSS property to change the background color of an element to CIELCh 71, 10.860, 17.471 is called "background". The background property can be set on classes, ids or directly on the HTML element.

```
.background, #background, body{  
background: rgb(195, 167, 168) }
```

If only the background color should be changed can be used:

```
.background{ background-color: rgb(195,  
167, 168) }
```

This example shows the color as background, it is applied via the CSS property "background".

To optimize and compress your CSS code, you can use our [online CSS compressor and optimizer](#) based on csstidy. If you want to create a linear or radial gradient as background or border, check our [CSS Gradient Generator](#).

Hey! You found this booklet interesting? Support Converting Colors with the new Membership Option!

The pro membership hides all ads, plus gives you double the colors in the color bucket, and more awesome pro features!

[Learn more, Memberships starting at \\$2.50/m!](#)

**Follow me
on Twitter!**

@ConvertingColor