

Converting Colors

CIELCh(71, 10.980, 13.373)

Have a look what the booklet for
CIELCh(71, 10.980, 13.373) contains.

CIELCh(71, 10.921, 11.788)	3
<i>Conversions</i>	4
<i>Details</i>	6
<i>Harmonies</i>	11
<i>Previews</i>	20
<i>Color Blindness Simulation</i>	23
<i>CSS Examples</i>	26

Color

CIELCh(71, 10.921, 11.788)

Conversions

Conversions Part 1

Format	Color
Hex	C3A7AA
RGB	195, 167, 170
RGB Percent	76%, 65%, 67%
CMY	0.2349, 0.3447, 0.3330
CMYK	0.00, 0.14, 0.13, 0.23
HSL	354°, 19%, 71%
HSV	354°, 14%, 77%
XYZ	43.6260, 42.1875, 43.9157
YIQ	175.7140, 15.7250, 6.8690

Conversions

Conversions Part 2

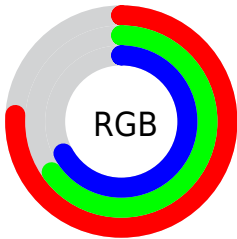
Format	Color
RYB	195, 167, 170
Decimal	12822442
CIELab	71.00, 10.69, 2.23
CIELCh	71, 10.921, 11.788
Yxy	42.1875, 0.3363, 0.3252
Android (android.graphics.Color)	4291012522 (0xFFC3A7AA)
YUV	175.7140, -2.8170, 16.9138
Hunter-Lab	64.9519, 6.2267, 5.3788

Details

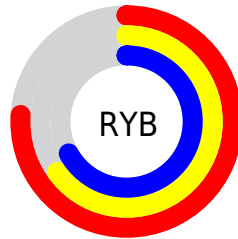
The CIELCh color $71, 10.921, 11.788$ is a light color, and the websafe version is hex `CC9999`. A complement of this color would be $77, 10.151, 189.512$, and the grayscale version is $72, 0.009, 296.813$.

A 20% lighter version of the original color is $91, 11.057, 12.122$, and $51, 10.901, 11.528$ is the 20% darker color. If you saturate the color by 10%, you get $66, 19.113, 12.928$, and if you desaturate by 10%, it is $76, 3.207, 10.768$.

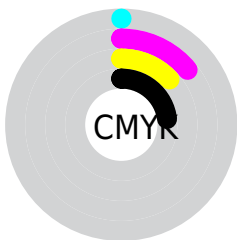
Distribution



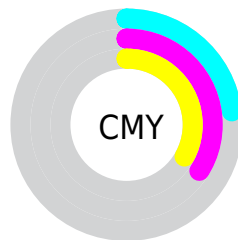
- Red (76%)
- Green (65%)
- Blue (67%)



- Red (76%)
- Yellow (65%)
- Blue (67%)



- Cyan (0%)
- Magenta (14%)
- Yellow (13%)
- Black (23%)



- Cyan (23%)
- Magenta (34%)
- Yellow (33%)

Brightness & Saturation Gradients

These gradients show how the CIELCh color 71, 10.921, 11.788 changes by changing the brightness by 10 percent. The first figure shows a shift by +10% for each color and the second figure -10%.

Similar to the brightness gradients but the following saturation gradients show a change of the CIELCh color 71, 10.921, 11.788 by changing the saturation by 10% instead.

71, 10.921, 11.788

71, 10.921, 11.788

100, 10.921,
11.788

61, 10.921, 11.788

91, 10.921, 11.788

51, 10.921, 11.788

41, 10.921, 11.788

31, 10.921, 11.788

21, 10.921, 11.788

11, 10.921, 11.788

1, 10.921, 11.788

0, 10.921, 11.788

71, 10.921, 11.788

71, 10.921, 11.788

66, 19.113, 12.928

76, 3.207, 10.768

61, 27.739, 14.312

82, 4.021, 190.299

56, 36.686, 16.043

88, 10.786,
189.569

51, 45.756, 18.238

93, 17.125,
188.994

48, 54.675, 21.028

45, 63.132, 24.526

96, 19.588,
198.213

42, 70.852, 28.728

41, 77.561, 33.330

41, 80.887, 35.655

Harmonies

Complementary

The Complementary color scheme is a pair of colors which are on the opposite of each other on the color wheel.



71, 10.921, 11.788



77, 10.151, 189.512

Rectangle

The Rectangle color scheme consists of four colors that form a rectangle on the color wheel.



71, 10.921, 11.788



71, 10.921, 61.788



71, 10.921, 191.788



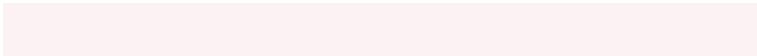
71, 10.921, 241.788

Sweetspot

The Sweet Spot groups the original color and five complimentary colors.



71, 10.919, 11.797



96, 3.630, 10.732



71, 17.810, 321.911



51, 2.607, 10.824



0, 0.000, 0.000



53, 0.007, 296.813

Same Dimension

The Same Dimension uses a secret algorithm to generate beautiful new colors.



71, 10.919, 11.797



88, 16.093, 12.106



74, 8.866, 60.448



38, 4.222, 11.293



33, 69.496, 34.969



3, 14.091, 13.578

Inverse Universe

The Inverse Universe completely reimagines the original color for something new.



71, 10.919, 11.797



88, 16.093, 12.106



74, 8.324, 243.517



38, 4.222, 11.293



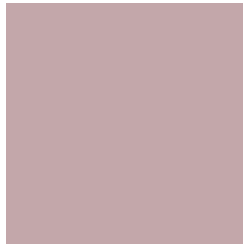
33, 69.496, 34.969



3, 14.091, 13.578

Previews

White Background



This preview shows how the CIELCh color 71, 10.921, 11.788 looks on a white background.

Color Contrast Check

Large Text (above 18pt) WCAG AA × Fail

Any Text WCAG AA × Fail

Large Text (above 18pt) WCAG AAA × Fail

Any Text WCAG AAA × Fail

Black Background



This preview shows how the CIE LCh color 71, 10.921, 11.788 looks on a black background.

Color Contrast Check

Large Text (above 18pt) WCAG AA ✓ Pass

Any Text WCAG AA ✓ Pass

Large Text (above 18pt) WCAG AAA ✓ Pass

Any Text WCAG AAA ✓ Pass

If you want to check with other color combinations, try the [Color Contrast Checker](#).

CIELCh 71, 10.921, 11.788

Background



This preview shows how black text looks on a background with the CIELCh color 71, 10.921, 11.788.



This preview shows how white text looks on a background with the CIELCh color 71, 10.921, 11.788.

Color Blindness Simulation

Color vision deficiency is a very complex topic, and I could not describe the different causes any better than Wikipedia does, so if you want to learn more, you should check out their [article about color blindness](#).

Dichromacy



Original Color

71, 10.921, 11.788

Protanopia

71, 1.509, 19.206

Deuteranopia

71, 9.301, 13.489



Tritanopia
71, 13.392, 348.770

Trichromacy



Original Color
71, 10.921, 11.788

Protanomaly
71, 4.981, 13.479

Deuteranomaly
71, 9.691, 13.799

Tritanomaly
71, 12.663, 355.146

Monochromacy



Original Color
71, 10.921, 11.788

Achromatopsia
72, 0.009, 296.813

Achromatomaly
72, 3.830, 11.456

CSS Examples

Text

The CSS property to change the color of the text to CIELCh 71, 10.921, 11.788 is called "color". The color property can be set on classes, ids or directly on the HTML element.

This example shows how text in the color `rgb(195, 167, 170)` looks like.

```
.text, #text, p{  
    color:rgb(195, 167, 170)  
}
```

If you want to add a text shadow in that color use the text-shadow property, you can generate a text shadow directly with our [CSS Text Shadow Generator](#).

Here you see how black text with a 4 pixel rgb(195, 167, 170) colored shadow looks like.

```
.shadow{ text-shadow: 4px 4px 2px rgb(195, 167, 170) }
```

Border

The CSS property to change the border of an element to CIELCh 71, 10.921, 11.788 is called "border". The border property can be set on classes, ids or directly on the HTML element.

This example shows the color as border, it can be applied via the CSS property "border" or "border-color".

```
.border, #border, table{ border:4px solid rgb(195, 167, 170) }
```

If only the border color should be changed use the property `border-color`.

```
.border{ border-color:rgb(195, 167, 170) }
```

If you want to add a box shadow in that color use:

Here you see how a box with a 4 pixel `rgb(195, 167, 170)` colored shadow looks like.

```
.boxshadow{ -moz-box-shadow:4px 4px 4px  
4px rgb(195, 167, 170); -webkit-box-  
shadow:4px 4px 4px 4px rgb(195, 167, 170);  
box-shadow:4px 4px 4px 4px rgb(195, 167,  
170) }
```

Background

The CSS property to change the background color of an element to CIELCh 71, 10.921, 11.788 is called "background". The background property can be set on classes, ids or directly on the HTML element.

```
.background, #background, body{  
background: rgb(195, 167, 170) }
```

If only the background color should be changed can be used:

```
.background{ background-color: rgb(195,  
167, 170) }
```

This example shows the color as background, it is applied via the CSS property "background".

To optimize and compress your CSS code, you can use our [online CSS compressor and optimizer](#) based on csstidy. If you want to create a linear or radial gradient as background or border, check our [CSS Gradient Generator](#).

Hey! You found this booklet interesting? Support Converting Colors with the new Membership Option!

The pro membership hides all ads, plus gives you double the colors in the color bucket, and more awesome pro features!

[Learn more, Memberships starting at \\$2.50/m!](#)

**Follow me
on Twitter!**

@ConvertingColor