

Converting Colors

CIELCh(71, 12.443, 40.968)

Have a look what the booklet for
CIELCh(71, 12.443, 40.968) contains.

CIELCh(71, 12.507, 43.168)	3
<i>Conversions</i>	4
<i>Details</i>	6
<i>Harmonies</i>	11
<i>Previews</i>	20
<i>Color Blindness Simulation</i>	23
<i>CSS Examples</i>	26

Color

CIELCh(71, 12.507, 43.168)

Conversions

Conversions Part 1

Format	Color
Hex	C5A89F
RGB	197, 168, 159
RGB Percent	77%, 66%, 62%
CMY	0.2289, 0.3425, 0.3778
CMYK	0.00, 0.15, 0.19, 0.23
HSL	14°, 25%, 70%
HSV	14°, 19%, 77%
XYZ	43.0959, 42.1875, 38.5140
YIQ	175.6450, 20.1730, 3.3490

Conversions

Conversions Part 2

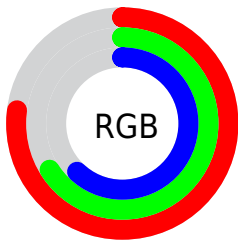
Format	Color
RYB	197, 171, 159
Decimal	12953759
CIELab	71.00, 9.12, 8.56
CIElCh	71, 12.507, 43.168
Yxy	42.1875, 0.3481, 0.3408
Android (android.graphics.Color)	4291143839 (0xFFC5A89F)
YUV	175.6450, -8.2060, 18.7283
Hunter-Lab	64.9519, 4.7698, 10.3096

Details

The CIELCh color $71, 12.507, 43.168$ is a light color, and the websafe version is hex `CC9999`. A complement of this color would be $74, 11.073, 224.939$, and the grayscale version is $72, 0.009, 296.813$.

A 20% lighter version of the original color is $91, 12.452, 41.919$, and $51, 12.501, 42.189$ is the 20% darker color. If you saturate the color by 10%, you get $67, 19.773, 43.016$, and if you desaturate by 10%, it is $75, 5.794, 43.416$.

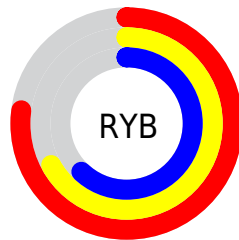
Distribution



Red (77%)

Green (66%)

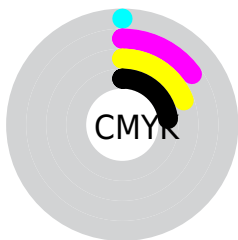
Blue (62%)



Red (77%)

Yellow (67%)

Blue (62%)

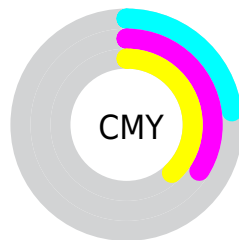


Cyan (0%)

Magenta (15%)

Yellow (19%)

Black (23%)



Cyan (23%)

Magenta (34%)

Yellow (38%)

Brightness & Saturation Gradients

These gradients show how the CIELCh color 71, 12.507, 43.168 changes by changing the brightness by 10 percent. The first figure shows a shift by +10% for each color and the second figure -10%.

Similar to the brightness gradients but the following saturation gradients show a change of the CIELCh color 71, 12.507, 43.168 by changing the saturation by 10% instead.

71, 12.507, 43.168

71, 12.507, 43.168

100, 12.507,
43.168

61, 12.507, 43.168

91, 12.507, 43.168

51, 12.507, 43.168

41, 12.507, 43.168

31, 12.507, 43.168

21, 12.507, 43.168

11, 12.507, 43.168

1, 12.507, 43.168

0, 12.507, 43.168

71, 12.507, 43.168

71, 12.507, 43.168

67, 19.773, 43.016

75, 5.794, 43.416

63, 27.628, 42.982

80, 0.412, 225.147

59, 36.078, 43.111

84, 6.162, 224.381

55, 45.083, 43.426

89, 11.509,
224.805

52, 54.502, 43.914

93, 16.160,
221.862

49, 64.001, 44.476

46, 72.818, 44.810

96, 19.122,
198.243

44, 79.909, 44.606

44, 80.391, 44.633

Harmonies

Complementary

The Complementary color scheme is a pair of colors which are on the opposite of each other on the color wheel.



71, 12.507, 43.168



74, 11.073, 224.939

Rectangle

The Rectangle color scheme consists of four colors that form a rectangle on the color wheel.



71, 12.507, 43.168



71, 12.507, 93.168



71, 12.507, 223.168



71, 12.507, 273.168

Sweetspot

The Sweet Spot groups the original color and five complimentary colors.



71, 12.506, 43.179



97, 4.549, 43.476



70, 21.288, 332.963



51, 3.025, 43.467



0, 0.000, 0.000



53, 0.007, 296.813

Same Dimension

The Same Dimension uses a secret algorithm to generate beautiful new colors.



71, 12.506, 43.179



88, 18.694, 43.100



76, 15.446, 93.755



40, 3.560, 43.414



36, 69.668, 45.016



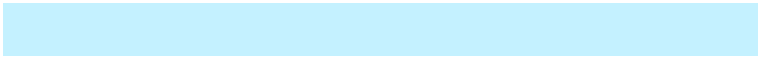
5, 13.918, 33.589

Inverse Universe

The Inverse Universe completely reimagines the original color for something new.



74, 11.073, 224.939



93, 16.087, 225.241



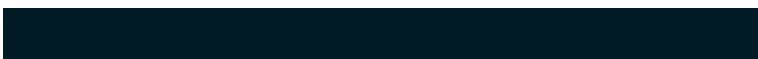
69, 15.599, 278.713



41, 3.367, 224.367



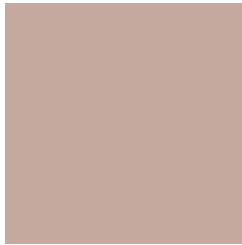
49, 32.257, 243.053



8, 11.126, 233.081

Previews

White Background



This preview shows how the CIELCh color 71, 12.507, 43.168 looks on a white background.

Color Contrast Check

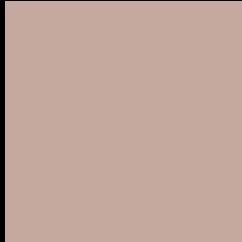
Large Text (above 18pt) WCAG AA × Fail

Any Text WCAG AA × Fail

Large Text (above 18pt) WCAG AAA × Fail

Any Text WCAG AAA × Fail

Black Background



This preview shows how the CIELCh color 71, 12.507, 43.168 looks on a black background.

Color Contrast Check

Large Text (above 18pt) WCAG AA ✓ Pass

Any Text WCAG AA ✓ Pass

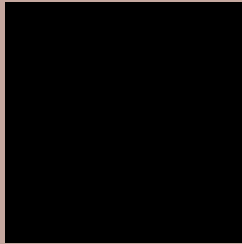
Large Text (above 18pt) WCAG AAA ✓ Pass

Any Text WCAG AAA ✓ Pass

If you want to check with other color combinations, try the [Color Contrast Checker](#).

CIELCh 71, 12.507, 43.168

Background



This preview shows how black text looks on a background with the CIELCh color 71, 12.507, 43.168.



This preview shows how white text looks on a background with the CIELCh color 71, 12.507, 43.168.

Color Blindness Simulation

Color vision deficiency is a very complex topic, and I could not describe the different causes any better than Wikipedia does, so if you want to learn more, you should check out their [article about color blindness](#).

Dichromacy



Original Color

71, 12.507, 43.168

Protanopia

71, 6.554, 85.135

Deuteranopia

71, 12.134, 43.889



Tritanopia
71, 14.730, 352.121

Trichromacy



Original Color
71, 12.507, 43.168

Protanomaly
71, 7.991, 62.494

Deuteranomaly
71, 12.134, 43.889

Tritanomaly
71, 12.631, 8.145

Monochromacy



Original Color
71, 12.507, 43.168

Achromatopsia
71, 0.009, 296.813

Achromatomaly
71, 4.504, 40.837

CSS Examples

Text

The CSS property to change the color of the text to CIELCh 71, 12.507, 43.168 is called "color". The color property can be set on classes, ids or directly on the HTML element.

This example shows how text in the color `rgb(197, 168, 159)` looks like.

```
.text, #text, p{  
    color:rgb(197, 168, 159)  
}
```

If you want to add a text shadow in that color use the text-shadow property, you can generate a text shadow directly with our [CSS Text Shadow Generator](#).

Here you see how black text with a 4 pixel rgb(197, 168, 159) colored shadow looks like.

```
.shadow{ text-shadow: 4px 4px 2px rgb(197, 168, 159) }
```

Border

The CSS property to change the border of an element to CIELCh 71, 12.507, 43.168 is called "border". The border property can be set on classes, ids or directly on the HTML element.

This example shows the color as border, it can be applied via the CSS property "border" or "border-color".

```
.border, #border, table{ border:4px solid rgb(197, 168, 159) }
```

If only the border color should be changed use the property `border-color`.

```
.border{ border-color:rgb(197, 168, 159) }
```

If you want to add a box shadow in that color use:

Here you see how a box with a 4 pixel `rgb(197, 168, 159)` colored shadow looks like.

```
.boxshadow{ -moz-box-shadow:4px 4px 4px  
4px rgb(197, 168, 159); -webkit-box-  
shadow:4px 4px 4px 4px rgb(197, 168, 159);  
box-shadow:4px 4px 4px 4px rgb(197, 168,  
159) }
```

Background

The CSS property to change the background color of an element to CIELCh 71, 12.507, 43.168 is called "background". The background property can be set on classes, ids or directly on the HTML element.

```
.background, #background, body{  
background: rgb(197, 168, 159) }
```

If only the background color should be changed can be used:

```
.background{ background-color: rgb(197,  
168, 159) }
```

This example shows the color as background, it is applied via the CSS property "background".

To optimize and compress your CSS code, you can use our [online CSS compressor and optimizer](#) based on csstidy. If you want to create a linear or radial gradient as background or border, check our [CSS Gradient Generator](#).

Hey! You found this booklet interesting? Support Converting Colors with the new Membership Option!

The pro membership hides all ads, plus gives you double the colors in the color bucket, and more awesome pro features!

[Learn more, Memberships starting at \\$2.50/m!](#)

**Follow me
on Twitter!**

@ConvertingColor