

Converting Colors

CIELCh(71, 13.503, 1.146)

Have a look what the booklet for
CIELCh(71, 13.503, 1.146) contains.

CIELCh(71, 13.915, 0.134)	3
<i>Conversions</i>	4
<i>Details</i>	6
<i>Harmonies</i>	11
<i>Previews</i>	20
<i>Color Blindness Simulation</i>	23
<i>CSS Examples</i>	26

Color

CIELCh(71, 13.915, 0.134)

Conversions

Conversions Part 1

Format	Color
Hex	C7A5AE
RGB	199, 165, 174
RGB Percent	78%, 65%, 68%
CMY	0.2190, 0.3524, 0.3171
CMYK	0.00, 0.17, 0.13, 0.22
HSL	344°, 23%, 71%
HSV	344°, 17%, 78%
XYZ	44.7293, 42.1875, 45.9051
YIQ	176.1920, 17.3750, 10.0070

Conversions

Conversions Part 2

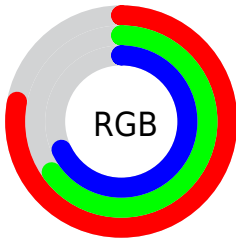
Format	Color
RYB	199, 165, 174
Decimal	13084078
CIELab	71.00, 13.91, 0.03
CIELCh	71, 13.915, 0.134
Yxy	42.1875, 0.3368, 0.3176
Android (android.graphics.Color)	4291274158 (0xFFC7A5AE)
YUV	176.1920, -1.0807, 20.0026
Hunter-Lab	64.9519, 9.2587, 3.5628

Details

The CIELCh color $71, 13.915, 0.134$ is a light color, and the websafe version is hex `CC9999`. A complement of this color would be $78, 13.164, 176.898$, and the grayscale version is $72, 0.009, 296.813$.

A 20% lighter version of the original color is $91, 13.536, 0.321$, and $51, 14.101, 359.482$ is the 20% darker color. If you saturate the color by 10%, you get $66, 22.492, 1.388$, and if you desaturate by 10%, it is $76, 5.640, 359.034$.

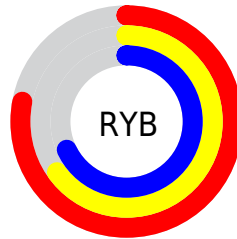
Distribution



Red (78%)

Green (65%)

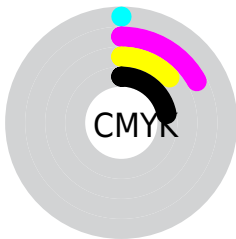
Blue (68%)



Red (78%)

Yellow (65%)

Blue (68%)

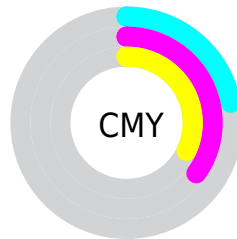


Cyan (0%)

Magenta (17%)

Yellow (13%)

Black (22%)



Cyan (22%)

Magenta (35%)

Yellow (32%)

Brightness & Saturation Gradients

These gradients show how the CIELCh color 71, 13.915, 0.134 changes by changing the brightness by 10 percent. The first figure shows a shift by +10% for each color and the second figure -10%.

Similar to the brightness gradients but the following saturation gradients show a change of the CIELCh color 71, 13.915, 0.134 by changing the saturation by 10% instead.

 71, 13.915, 0.134  71, 13.915, 0.134

 100, 13.915, 0.134  61, 13.915, 0.134

 91, 13.915, 0.134  51, 13.915, 0.134

 41, 13.915, 0.134

 31, 13.915, 0.134

 21, 13.915, 0.134

 11, 13.915, 0.134

 1, 13.915, 0.134

 0, 13.915, 0.134

 71, 13.915, 0.134

 71, 13.915, 0.134

66, 22.492, 1.388

76, 5.640, 359.034

61, 31.260, 2.869

82, 2.271, 178.421

56, 40.017, 4.672

87, 9.803, 177.452

52, 48.471, 6.909

93, 16.964,
176.715

48, 56.256, 9.730

96, 19.126,
186.381

45, 63.015, 13.300

96, 18.359,
198.291

43, 68.548, 17.749

42, 73.003, 23.019

42, 74.306, 24.554

Harmonies

Complementary

The Complementary color scheme is a pair of colors which are on the opposite of each other on the color wheel.



71, 13.915, 0.134



78, 13.164, 176.898

Rectangle

The Rectangle color scheme consists of four colors that form a rectangle on the color wheel.



71, 13.915, 0.134



71, 13.915, 50.134



71, 13.915, 180.134



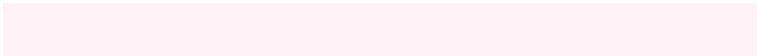
71, 13.915, 230.134

Sweetspot

The Sweet Spot groups the original color and five complimentary colors.



71, 13.913, 0.139



97, 4.851, 358.806



71, 20.732, 317.497



51, 3.315, 358.890



0, 0.000, 0.000



53, 0.007, 296.813

Same Dimension

The Same Dimension uses a secret algorithm to generate beautiful new colors.



71, 13.913, 0.139



87, 20.051, 0.520



73, 11.087, 42.825



39, 4.540, 359.285



34, 63.723, 23.645



4, 16.385, 5.961

Inverse Universe

The Inverse Universe completely reimagines the original color for something new.



71, 13.913, 0.139



87, 20.051, 0.520



76, 9.962, 224.325



39, 4.540, 359.285



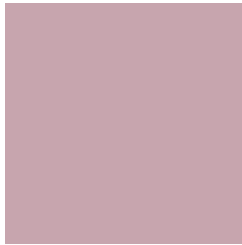
34, 63.723, 23.645



4, 16.385, 5.961

Previews

White Background



This preview shows how the CIELCh color 71, 13.915, 0.134 looks on a white background.

Color Contrast Check

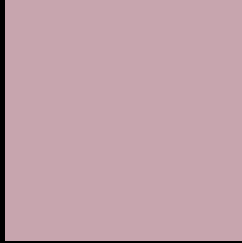
Large Text (above 18pt) WCAG AA × Fail

Any Text WCAG AA × Fail

Large Text (above 18pt) WCAG AAA × Fail

Any Text WCAG AAA × Fail

Black Background



This preview shows how the CIELCh color 71, 13.915, 0.134 looks on a black background.

Color Contrast Check

Large Text (above 18pt) WCAG AA ✓ Pass

Any Text WCAG AA ✓ Pass

Large Text (above 18pt) WCAG AAA ✓ Pass

Any Text WCAG AAA ✓ Pass

If you want to check with other color combinations, try the [Color Contrast Checker](#).

CIELCh 71, 13.915, 0.134

Background



This preview shows how black text looks on a background with the CIELCh color 71, 13.915, 0.134.



This preview shows how white text looks on a background with the CIELCh color 71, 13.915, 0.134.

Color Blindness Simulation

Color vision deficiency is a very complex topic, and I could not describe the different causes any better than Wikipedia does, so if you want to learn more, you should check out their [article about color blindness](#).

Dichromacy



Original Color

71, 13.915, 0.134

Protanopia

71, 3.480, 309.181

Deuteranopia

71, 9.367, 359.840



Tritanopia

71, 14.844, 354.753

Trichromacy



Original Color
71, 13.915, 0.134

Protanomaly
71, 6.537, 344.217

Deuteranomaly
71, 11.002, 0.165

Tritanomaly
71, 14.638, 356.691

Monochromacy



Original Color
71, 13.915, 0.134

Achromatopsia
72, 0.009, 296.813

Achromatomaly
71, 4.837, 0.025

CSS Examples

Text

The CSS property to change the color of the text to CIELCh 71, 13.915, 0.134 is called "color". The color property can be set on classes, ids or directly on the HTML element.

This example shows how text in the color `rgb(199, 165, 174)` looks like.

```
.text, #text, p{  
    color:rgb(199, 165, 174)  
}
```

If you want to add a text shadow in that color use the text-shadow property, you can generate a text shadow directly with our [CSS Text Shadow Generator](#).

Here you see how black text with a 4 pixel rgb(199, 165, 174) colored shadow looks like.

```
.shadow{ text-shadow: 4px 4px 2px rgb(199, 165, 174) }
```

Border

The CSS property to change the border of an element to CIELCh 71, 13.915, 0.134 is called "border". The border property can be set on classes, ids or directly on the HTML element.

This example shows the color as border, it can be applied via the CSS property "border" or "border-color".

```
.border, #border, table{ border:4px solid rgb(199, 165, 174) }
```

If only the border color should be changed use the property `border-color`.

```
.border{ border-color:rgb(199, 165, 174) }
```

If you want to add a box shadow in that color use:

Here you see how a box with a 4 pixel `rgb(199, 165, 174)` colored shadow looks like.

```
.boxshadow{ -moz-box-shadow:4px 4px 4px  
4px rgb(199, 165, 174); -webkit-box-  
shadow:4px 4px 4px 4px rgb(199, 165, 174);  
box-shadow:4px 4px 4px 4px rgb(199, 165,  
174) }
```

Background

The CSS property to change the background color of an element to CIELCh 71, 13.915, 0.134 is called "background". The background property can be set on classes, ids or directly on the HTML element.

```
.background, #background, body{  
background: rgb(199, 165, 174) }
```

If only the background color should be changed can be used:

```
.background{ background-color: rgb(199,  
165, 174) }
```

This example shows the color as background, it is applied via the CSS property "background".

To optimize and compress your CSS code, you can use our [online CSS compressor and optimizer](#) based on csstidy. If you want to create a linear or radial gradient as background or border, check our [CSS Gradient Generator](#).

Hey! You found this booklet interesting? Support Converting Colors with the new Membership Option!

The pro membership hides all ads, plus gives you double the colors in the color bucket, and more awesome pro features!

[Learn more, Memberships starting at \\$2.50/m!](#)

**Follow me
on Twitter!**

@ConvertingColor