

Converting Colors

CIELCh(71, 13.582, 44.035)

Have a look what the booklet for
CIELCh(71, 13.582, 44.035) contains.

CIELCh(71, 13.517, 43.917)	3
<i>Conversions</i>	4
<i>Details</i>	6
<i>Harmonies</i>	11
<i>Previews</i>	20
<i>Color Blindness Simulation</i>	23
<i>CSS Examples</i>	26

Color

CIELCh(71, 13.517, 43.917)

Conversions

Conversions Part 1

Format	Color
Hex	C6A79D
RGB	198, 167, 157
RGB Percent	78%, 65%, 62%
CMY	0.2227, 0.3443, 0.3835
CMYK	0.00, 0.16, 0.21, 0.22
HSL	15°, 27%, 70%
HSV	15°, 21%, 78%
XYZ	43.3032, 42.1875, 37.8488
YIQ	175.1290, 21.6860, 3.4620

Conversions

Conversions Part 2

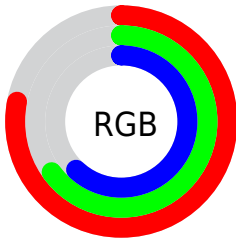
Format	Color
R _Y B	198, 170, 157
Decimal	13019037
CIE Lab	71.00, 9.74, 9.38
CIE LCh	71, 13.517, 43.917
Yxy	42.1875, 0.3511, 0.3420
Android (android.graphics.Color)	4291209117 (0xFFC6A79D)
YUV	175.1290, -8.9376, 20.0579
Hunter-Lab	64.9519, 5.3395, 10.9168

Details

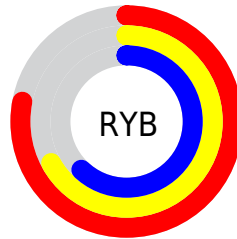
The CIELCh color $71, 13.517, 43.917$ is a light color, and the websafe version is hex `CC9999`. A complement of this color would be $74, 11.866, 225.960$, and the grayscale version is $72, 0.009, 296.813$.

A 20% lighter version of the original color is $91, 13.390, 42.738$, and $51, 13.606, 43.050$ is the 20% darker color. If you saturate the color by 10%, you get $67, 20.884, 43.739$, and if you desaturate by 10%, it is $75, 6.708, 44.197$.

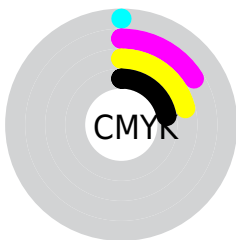
Distribution



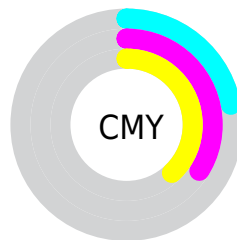
- Red (78%)
- Green (65%)
- Blue (62%)



- Red (78%)
- Yellow (67%)
- Blue (62%)



- Cyan (0%)
- Magenta (16%)
- Yellow (21%)
- Black (22%)



- Cyan (22%)
- Magenta (34%)
- Yellow (38%)

Brightness & Saturation Gradients

These gradients show how the CIELCh color 71, 13.517, 43.917 changes by changing the brightness by 10 percent. The first figure shows a shift by +10% for each color and the second figure -10%.

Similar to the brightness gradients but the following saturation gradients show a change of the CIELCh color 71, 13.517, 43.917 by changing the saturation by 10% instead.

■ 71, 13.517, 43.917

■ 71, 13.517, 43.917

■ 100, 13.517,
43.917

■ 61, 13.517, 43.917

■ 91, 13.517, 43.917

■ 51, 13.517, 43.917

■ 41, 13.517, 43.917

■ 31, 13.517, 43.917

■ 21, 13.517, 43.917

■ 11, 13.517, 43.917

■ 1, 13.517, 43.917

■ 0, 13.517, 43.917

■ 71, 13.517, 43.917

■ 71, 13.517, 43.917

67, 20.884, 43.739

75, 6.708, 44.197

63, 28.843, 43.681

80, 0.414, 43.393

59, 37.397, 43.784

84, 5.420, 225.209

55, 46.496, 44.066

89, 10.843,
225.648

52, 55.980, 44.504

93, 15.663,
223.823

49, 65.473, 44.981

46, 74.121, 45.150

96, 18.645,
198.273

44, 80.617, 44.880

Harmonies

Complementary

The Complementary color scheme is a pair of colors which are on the opposite of each other on the color wheel.



71, 13.517, 43.917



74, 11.866, 225.960

Rectangle

The Rectangle color scheme consists of four colors that form a rectangle on the color wheel.



71, 13.517, 43.917



71, 13.517, 93.917



71, 13.517, 223.917



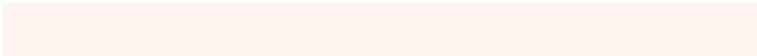
71, 13.517, 273.917

Sweetspot

The Sweet Spot groups the original color and five complimentary colors.



71, 13.516, 43.927



97, 4.536, 44.305



69, 22.960, 333.058



51, 3.017, 44.294



0, 0.000, 0.000



53, 0.007, 296.813

Same Dimension

The Same Dimension uses a secret algorithm to generate beautiful new colors.



71, 13.516, 43.927



87, 20.423, 43.826



76, 16.667, 93.583



40, 3.550, 44.232



37, 69.433, 45.288



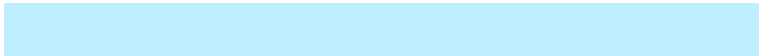
5, 13.874, 34.067

Inverse Universe

The Inverse Universe completely reimagines the original color for something new.



74, 11.866, 225.960



92, 17.344, 226.350



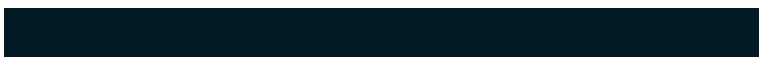
69, 16.843, 278.930



41, 3.359, 225.246



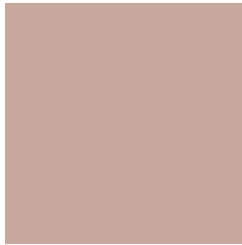
48, 32.477, 244.525



8, 11.132, 234.410

Previews

White Background



This preview shows how the CIELCh color 71, 13.517, 43.917 looks on a white background.

Color Contrast Check

Large Text (above 18pt) WCAG AA × Fail

Any Text WCAG AA × Fail

Large Text (above 18pt) WCAG AAA × Fail

Any Text WCAG AAA × Fail

Black Background



This preview shows how the CIELCh color 71, 13.517, 43.917 looks on a black background.

Color Contrast Check

Large Text (above 18pt) WCAG AA ✓ Pass

Any Text WCAG AA ✓ Pass

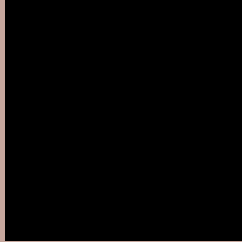
Large Text (above 18pt) WCAG AAA ✓ Pass

Any Text WCAG AAA ✓ Pass

If you want to check with other color combinations, try the [Color Contrast Checker](#).

CIELCh 71, 13.517, 43.917

Background



This preview shows how black text looks on a background with the CIELCh color 71, 13.517, 43.917.



This preview shows how white text looks on a background with the CIELCh color 71, 13.517, 43.917.

Color Blindness Simulation

Color vision deficiency is a very complex topic, and I could not describe the different causes any better than Wikipedia does, so if you want to learn more, you should check out their [article about color blindness](#).

Dichromacy



Original Color


71, 13.517, 43.917

Protanopia

71, 7.564, 88.364

Deuteranopia

71, 13.026, 47.413



Tritanopia
71, 15.769, 354.290

Trichromacy



Original Color
71, 13.517, 43.917

Protanomaly
71, 9.060, 65.649

Deuteranomaly
71, 13.026, 47.413

Tritanomaly
71, 13.803, 9.334

Monochromacy



Original Color
71, 13.517, 43.917

Achromatopsia
71, 0.009, 296.813

Achromatomaly
71, 4.504, 40.837

CSS Examples

Text

The CSS property to change the color of the text to CIELCh 71, 13.517, 43.917 is called "color". The color property can be set on classes, ids or directly on the HTML element.

This example shows how text in the color `rgb(198, 167, 157)` looks like.

```
.text, #text, p{  
    color:rgb(198, 167, 157)  
}
```

If you want to add a text shadow in that color use the text-shadow property, you can generate a text shadow directly with our [CSS Text Shadow Generator](#).

Here you see how black text with a 4 pixel rgb(198, 167, 157) colored shadow looks like.

```
.shadow{ text-shadow: 4px 4px 2px rgb(198, 167, 157) }
```

Border

The CSS property to change the border of an element to CIELCh 71, 13.517, 43.917 is called "border". The border property can be set on classes, ids or directly on the HTML element.

This example shows the color as border, it can be applied via the CSS property "border" or "border-color".

```
.border, #border, table{ border:4px solid rgb(198, 167, 157) }
```

If only the border color should be changed use the property `border-color`.

```
.border{ border-color:rgb(198, 167, 157) }
```

If you want to add a box shadow in that color use:

Here you see how a box with a 4 pixel `rgb(198, 167, 157)` colored shadow looks like.

```
.boxshadow{ -moz-box-shadow:4px 4px 4px  
4px rgb(198, 167, 157); -webkit-box-  
shadow:4px 4px 4px 4px rgb(198, 167, 157);  
box-shadow:4px 4px 4px 4px rgb(198, 167,  
157) }
```

Background

The CSS property to change the background color of an element to CIELCh 71, 13.517, 43.917 is called "background". The background property can be set on classes, ids or directly on the HTML element.

```
.background, #background, body{  
background: rgb(198, 167, 157) }
```

If only the background color should be changed can be used:

```
.background{ background-color: rgb(198,  
167, 157) }
```

This example shows the color as background, it is applied via the CSS property "background".

To optimize and compress your CSS code, you can use our [online CSS compressor and optimizer](#) based on csstidy. If you want to create a linear or radial gradient as background or border, check our [CSS Gradient Generator](#).

Hey! You found this booklet interesting? Support Converting Colors with the new Membership Option!

The pro membership hides all ads, plus gives you double the colors in the color bucket, and more awesome pro features!

[Learn more, Memberships starting at \\$2.50/m!](#)

**Follow me
on Twitter!**

@ConvertingColor