

Converting Colors

CIELCh(71, 13.674, 41.544)

Have a look what the booklet for
CIELCh(71, 13.674, 41.544) contains.

CIELCh(71, 13.657, 41.251)	3
<i>Conversions</i>	4
<i>Details</i>	6
<i>Harmonies</i>	11
<i>Previews</i>	20
<i>Color Blindness Simulation</i>	23
<i>CSS Examples</i>	26

Color

CIELCh(71, 13.657, 41.251)

Conversions

Conversions Part 1

Format	Color
Hex	C7A79E
RGB	199, 167, 158
RGB Percent	78%, 65%, 62%
CMY	0.2201, 0.3455, 0.3808
CMYK	0.00, 0.16, 0.21, 0.22
HSL	13°, 27%, 70%
HSV	13°, 21%, 78%
XYZ	43.4827, 42.1875, 38.1489
YIQ	175.5420, 21.9610, 3.9850

Conversions

Conversions Part 2

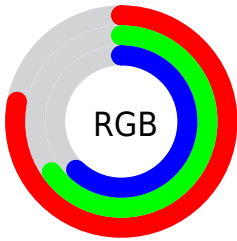
Format	Color
R _Y B	199, 170, 158
Decimal	13084574
CIE Lab	71.00, 10.27, 9.00
CIE LCh	71, 13.657, 41.251
Yxy	42.1875, 0.3512, 0.3407
Android (android.graphics.Color)	4291274654 (0xFFC7A79E)
YUV	175.5420, -8.6482, 20.5727
Hunter-Lab	64.9519, 5.8327, 10.6429

Details

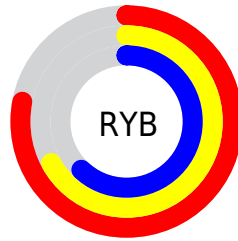
The CIELCh color $71, 13.657, 41.251$ is a light color, and the websafe version is hex `CC9999`. A complement of this color would be $75, 11.951, 222.783$, and the grayscale version is $72, 0.009, 296.813$.

A 20% lighter version of the original color is $91, 13.176, 40.726$, and $51, 13.765, 40.269$ is the 20% darker color. If you saturate the color by 10%, you get $67, 21.138, 41.212$, and if you desaturate by 10%, it is $75, 6.749, 41.405$.

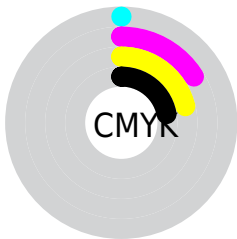
Distribution



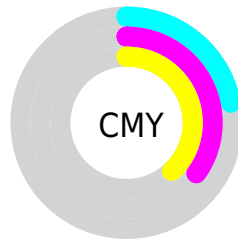
- Red (78%)
- Green (65%)
- Blue (62%)



- Red (78%)
- Yellow (67%)
- Blue (62%)



- Cyan (0%)
- Magenta (16%)
- Yellow (21%)
- Black (22%)



- Cyan (22%)
- Magenta (35%)
- Yellow (38%)

Brightness & Saturation Gradients

These gradients show how the CIELCh color 71, 13.657, 41.251 changes by changing the brightness by 10 percent. The first figure shows a shift by +10% for each color and the second figure -10%.

Similar to the brightness gradients but the following saturation gradients show a change of the CIELCh color 71, 13.657, 41.251 by changing the saturation by 10% instead.

■ 71, 13.657, 41.251

■ 71, 13.657, 41.251

■ 100, 13.657,
41.251

■ 61, 13.657, 41.251

■ 91, 13.657, 41.251

■ 51, 13.657, 41.251

■ 41, 13.657, 41.251

■ 31, 13.657, 41.251

■ 21, 13.657, 41.251

■ 11, 13.657, 41.251

■ 1, 13.657, 41.251

■ 0, 13.657, 41.251

■ 71, 13.657, 41.251

■ 71, 13.657, 41.251

67, 21.138, 41.212

75, 6.749, 41.405

63, 29.224, 41.309

80, 0.372, 40.319

59, 37.916, 41.590

84, 5.529, 222.197

55, 47.155, 42.077

89, 11.006,
222.538

51, 56.778, 42.756

94, 15.760,
218.744

48, 66.402, 43.511

46, 75.164, 43.991

96, 18.441,
198.286

44, 81.744, 44.005

Harmonies

Complementary

The Complementary color scheme is a pair of colors which are on the opposite of each other on the color wheel.



71, 13.657, 41.251



75, 11.951, 222.783

Rectangle

The Rectangle color scheme consists of four colors that form a rectangle on the color wheel.



71, 13.657, 41.251



71, 13.657, 91.251



71, 13.657, 221.251



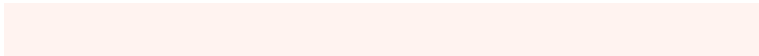
71, 13.657, 271.251

Sweetspot

The Sweet Spot groups the original color and five complimentary colors.



71, 13.656, 41.261



97, 4.584, 41.458



70, 23.205, 332.427



51, 3.049, 41.454



0, 0.000, 0.000



53, 0.007, 296.813

Same Dimension

The Same Dimension uses a secret algorithm to generate beautiful new colors.



71, 13.656, 41.261



86, 20.667, 41.222



76, 16.383, 92.385



40, 3.589, 41.423



36, 70.225, 44.381



5, 14.029, 32.425

Inverse Universe

The Inverse Universe completely reimagines the original color for something new.



75, 11.951, 222.783



92, 17.471, 223.109



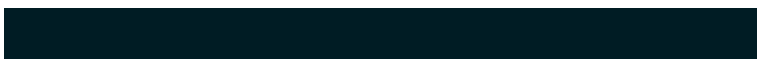
69, 16.498, 277.773



41, 3.390, 222.222



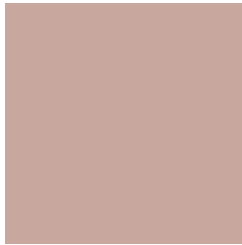
49, 31.801, 239.380



9, 11.129, 229.844

Previews

White Background



This preview shows how the CIELCh color 71, 13.657, 41.251 looks on a white background.

Color Contrast Check

Large Text (above 18pt) WCAG AA × Fail

Any Text WCAG AA × Fail

Large Text (above 18pt) WCAG AAA × Fail

Any Text WCAG AAA × Fail

Black Background



This preview shows how the CIELCh color 71, 13.657, 41.251 looks on a black background.

Color Contrast Check

Large Text (above 18pt) WCAG AA ✓ Pass

Any Text WCAG AA ✓ Pass

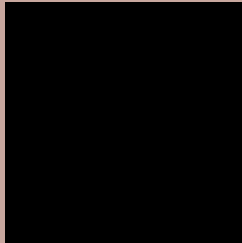
Large Text (above 18pt) WCAG AAA ✓ Pass

Any Text WCAG AAA ✓ Pass

If you want to check with other color combinations, try the [Color Contrast Checker](#).

CIELCh 71, 13.657, 41.251

Background



This preview shows how black text looks on a background with the CIELCh color 71, 13.657, 41.251.



This preview shows how white text looks on a background with the CIELCh color 71, 13.657, 41.251.

Color Blindness Simulation

Color vision deficiency is a very complex topic, and I could not describe the different causes any better than Wikipedia does, so if you want to learn more, you should check out their [article about color blindness](#).

Dichromacy



Original Color


71, 13.657, 41.251

Protanopia

71, 7.056, 86.869

Deuteranopia

71, 12.757, 45.335



Tritanopia
71, 15.769, 354.290

Trichromacy



Original Color
71, 13.657, 41.251

Protanomaly
71, 8.665, 63.261

Deuteranomaly
71, 13.127, 44.606

Tritanomaly
71, 13.803, 9.334

Monochromacy



Original Color
71, 13.657, 41.251

Achromatopsia
71, 0.009, 296.813

Achromatomaly
71, 4.868, 39.218

CSS Examples

Text

The CSS property to change the color of the text to CIELCh 71, 13.657, 41.251 is called "color". The color property can be set on classes, ids or directly on the HTML element.

This example shows how text in the color `rgb(199, 167, 158)` looks like.

```
.text, #text, p{  
    color:rgb(199, 167, 158)  
}
```

If you want to add a text shadow in that color use the text-shadow property, you can generate a text shadow directly with our [CSS Text Shadow Generator](#).

Here you see how black text with a 4 pixel rgb(199, 167, 158) colored shadow looks like.

```
.shadow{ text-shadow: 4px 4px 2px rgb(199, 167, 158) }
```

Border

The CSS property to change the border of an element to CIELCh 71, 13.657, 41.251 is called "border". The border property can be set on classes, ids or directly on the HTML element.

This example shows the color as border, it can be applied via the CSS property "border" or "border-color".

```
.border, #border, table{ border:4px solid rgb(199, 167, 158) }
```

If only the border color should be changed use the property `border-color`.

```
.border{ border-color:rgb(199, 167, 158) }
```

If you want to add a box shadow in that color use:

Here you see how a box with a 4 pixel `rgb(199, 167, 158)` colored shadow looks like.

```
.boxshadow{ -moz-box-shadow:4px 4px 4px  
4px rgb(199, 167, 158); -webkit-box-  
shadow:4px 4px 4px 4px rgb(199, 167, 158);  
box-shadow:4px 4px 4px 4px rgb(199, 167,  
158) }
```

Background

The CSS property to change the background color of an element to CIELCh 71, 13.657, 41.251 is called "background". The background property can be set on classes, ids or directly on the HTML element.

```
.background, #background, body{  
background: rgb(199, 167, 158) }
```

If only the background color should be changed can be used:

```
.background{ background-color: rgb(199,  
167, 158) }
```

This example shows the color as background, it is applied via the CSS property "background".

To optimize and compress your CSS code, you can use our [online CSS compressor and optimizer](#) based on csstidy. If you want to create a linear or radial gradient as background or border, check our [CSS Gradient Generator](#).

Hey! You found this booklet interesting? Support Converting Colors with the new Membership Option!

The pro membership hides all ads, plus gives you double the colors in the color bucket, and more awesome pro features!

[Learn more, Memberships starting at \\$2.50/m!](#)

**Follow me
on Twitter!**

@ConvertingColor