

Converting Colors

CIELCh(71, 14.203, 36.825)

Have a look what the booklet for
CIELCh(71, 14.203, 36.825) contains.

CIELCh(71, 14.040, 36.120)	3
<i>Conversions</i>	4
<i>Details</i>	6
<i>Harmonies</i>	11
<i>Previews</i>	20
<i>Color Blindness Simulation</i>	23
<i>CSS Examples</i>	26

Color

CIELCh(71, 14.040, 36.120)

Conversions

Conversions Part 1

Format	Color
Hex	C8A69F
RGB	200, 166, 159
RGB Percent	78%, 65%, 62%
CMY	0.2147, 0.3480, 0.3755
CMYK	0.00, 0.17, 0.20, 0.21
HSL	10°, 27%, 70%
HSV	10°, 20%, 79%
XYZ	43.8472, 42.1875, 38.7434
YIQ	175.3680, 22.5110, 5.0310

Conversions

Conversions Part 2

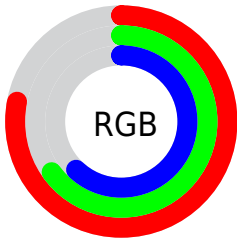
Format	Color
R _Y B	200, 167, 159
Decimal	13149855
CIE Lab	71.00, 11.34, 8.28
CIE LCh	71, 14.040, 36.120
Yxy	42.1875, 0.3514, 0.3381
Android (android.graphics.Color)	4291339935 (0xFFC8A69F)
YUV	175.3680, -8.0694, 21.6023
Hunter-Lab	64.9519, 6.8345, 10.1002

Details

The CIELCh color $71, 14.040, 36.120$ is a light color, and the websafe version is hex `CC9999`. A complement of this color would be $76, 12.239, 216.640$, and the grayscale version is $72, 0.009, 296.813$.

A 20% lighter version of the original color is $91, 13.180, 36.066$, and $51, 13.776, 35.352$ is the 20% darker color. If you saturate the color by 10%, you get $66, 21.786, 36.357$, and if you desaturate by 10%, it is $76, 6.891, 36.023$.

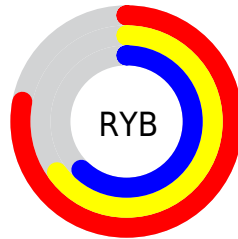
Distribution



Red (78%)

Green (65%)

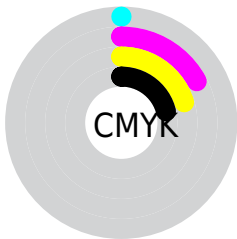
Blue (62%)



Red (78%)

Yellow (65%)

Blue (62%)

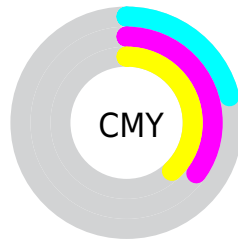


Cyan (0%)

Magenta (17%)

Yellow (20%)

Black (21%)



Cyan (21%)

Magenta (35%)

Yellow (38%)

Brightness & Saturation Gradients

These gradients show how the CIELCh color 71, 14.040, 36.120 changes by changing the brightness by 10 percent. The first figure shows a shift by +10% for each color and the second figure -10%.

Similar to the brightness gradients but the following saturation gradients show a change of the CIELCh color 71, 14.040, 36.120 by changing the saturation by 10% instead.

71, 14.040, 36.120

71, 14.040, 36.120

100, 14.040,
36.120

61, 14.040, 36.120

91, 14.040, 36.120

51, 14.040, 36.120

41, 14.040, 36.120

31, 14.040, 36.120

21, 14.040, 36.120

11, 14.040, 36.120

1, 14.040, 36.120

0, 14.040, 36.120

71, 14.040, 36.120

71, 14.040, 36.120

66, 21.786, 36.357

76, 6.891, 36.023

62, 30.157, 36.766

80, 0.301, 34.325

58, 39.137, 37.406

85, 5.784, 216.374

54, 48.651, 38.313

90, 11.420,
216.518

51, 58.517, 39.487

95, 16.308,
208.904

48, 68.335, 40.821

45, 77.219, 41.942

96, 18.023,
198.313

43, 83.825, 42.553

Harmonies

Complementary

The Complementary color scheme is a pair of colors which are on the opposite of each other on the color wheel.



71, 14.040, 36.120



76, 12.239, 216.640

Rectangle

The Rectangle color scheme consists of four colors that form a rectangle on the color wheel.



71, 14.040, 36.120



71, 14.040, 86.120



71, 14.040, 216.120



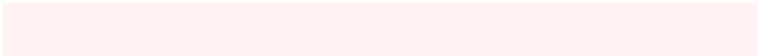
71, 14.040, 266.120

Sweetspot

The Sweet Spot groups the original color and five complimentary colors.



71, 14.039, 36.130



97, 4.715, 35.971



70, 24.009, 330.632



51, 3.136, 35.983



0, 0.000, 0.000



53, 0.007, 296.813

Same Dimension

The Same Dimension uses a secret algorithm to generate beautiful new colors.



71, 14.039, 36.130



86, 21.282, 36.221



76, 15.614, 88.532



39, 3.692, 36.013



35, 71.633, 42.833



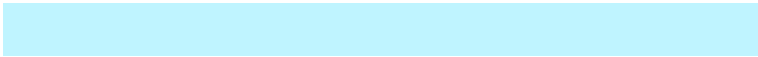
5, 14.373, 29.255

Inverse Universe

The Inverse Universe completely reimagines the original color for something new.



76, 12.239, 216.640



93, 17.884, 216.830



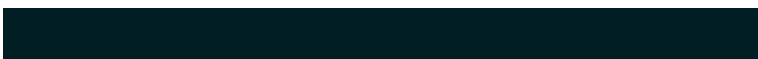
70, 15.546, 274.046



41, 3.479, 216.380



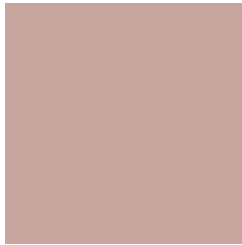
52, 31.187, 228.842



9, 11.281, 221.106

Previews

White Background



This preview shows how the CIELCh color 71, 14.040, 36.120 looks on a white background.

Color Contrast Check

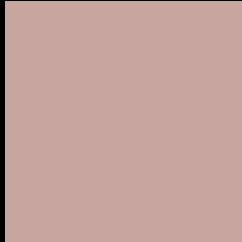
Large Text (above 18pt) WCAG AA × Fail

Any Text WCAG AA × Fail

Large Text (above 18pt) WCAG AAA × Fail

Any Text WCAG AAA × Fail

Black Background



This preview shows how the CIE LCh color 71, 14.040, 36.120 looks on a black background.

Color Contrast Check

Large Text (above 18pt) WCAG AA ✓ Pass

Any Text WCAG AA ✓ Pass

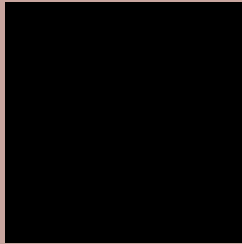
Large Text (above 18pt) WCAG AAA ✓ Pass

Any Text WCAG AAA ✓ Pass

If you want to check with other color combinations, try the [Color Contrast Checker](#).

CIELCh 71, 14.040, 36.120

Background



This preview shows how black text looks on a background with the CIELCh color 71, 14.040, 36.120.



This preview shows how white text looks on a background with the CIELCh color 71, 14.040, 36.120.

Color Blindness Simulation

Color vision deficiency is a very complex topic, and I could not describe the different causes any better than Wikipedia does, so if you want to learn more, you should check out their [article about color blindness](#).

Dichromacy



Original Color


71, 14.040, 36.120

Protanopia

71, 6.060, 83.107

Deuteranopia

71, 12.134, 43.889



Tritanopia
71, 15.911, 356.740

Trichromacy



Original Color
71, 14.040, 36.120

Protanomaly
71, 7.928, 57.777

Deuteranomaly
71, 13.055, 39.711

Tritanomaly
71, 14.191, 9.690

Monochromacy



Original Color
71, 14.040, 36.120

Achromatopsia
72, 0.009, 296.813

Achromatomaly
71, 5.085, 32.044

CSS Examples

Text

The CSS property to change the color of the text to CIELCh 71, 14.040, 36.120 is called "color". The color property can be set on classes, ids or directly on the HTML element.

This example shows how text in the color `rgb(200, 166, 159)` looks like.

```
.text, #text, p{  
    color:rgb(200, 166, 159)  
}
```

If you want to add a text shadow in that color use the text-shadow property, you can generate a text shadow directly with our [CSS Text Shadow Generator](#).

Here you see how black text with a 4 pixel rgb(200, 166, 159) colored shadow looks like.

```
.shadow{ text-shadow: 4px 4px 2px rgb(200, 166, 159) }
```

Border

The CSS property to change the border of an element to CIELCh 71, 14.040, 36.120 is called "border". The border property can be set on classes, ids or directly on the HTML element.

This example shows the color as border, it can be applied via the CSS property "border" or "border-color".

```
.border, #border, table{ border:4px solid rgb(200, 166, 159) }
```

If only the border color should be changed use the property `border-color`.

```
.border{ border-color:rgb(200, 166, 159) }
```

If you want to add a box shadow in that color use:

Here you see how a box with a 4 pixel `rgb(200, 166, 159)` colored shadow looks like.

```
.boxshadow{ -moz-box-shadow:4px 4px 4px  
4px rgb(200, 166, 159); -webkit-box-  
shadow:4px 4px 4px 4px rgb(200, 166, 159);  
box-shadow:4px 4px 4px 4px rgb(200, 166,  
159) }
```

Background

The CSS property to change the background color of an element to CIELCh 71, 14.040, 36.120 is called "background". The background property can be set on classes, ids or directly on the HTML element.

```
.background, #background, body{  
background: rgb(200, 166, 159) }
```

If only the background color should be changed can be used:

```
.background{ background-color: rgb(200,  
166, 159) }
```

This example shows the color as background, it is applied via the CSS property "background".

To optimize and compress your CSS code, you can use our [online CSS compressor and optimizer](#) based on csstidy. If you want to create a linear or radial gradient as background or border, check our [CSS Gradient Generator](#).

Hey! You found this booklet interesting? Support Converting Colors with the new Membership Option!

The pro membership hides all ads, plus gives you double the colors in the color bucket, and more awesome pro features!

[Learn more, Memberships starting at \\$2.50/m!](#)

**Follow me
on Twitter!**

@ConvertingColor