

Converting Colors

CIELCh(71, 14.686, 63.502)

Have a look what the booklet for
CIELCh(71, 14.686, 63.502) contains.

CIELCh(71, 14.773, 64.071)	3
<i>Conversions</i>	4
<i>Details</i>	6
<i>Harmonies</i>	11
<i>Previews</i>	20
<i>Color Blindness Simulation</i>	23
<i>CSS Examples</i>	26

Color

CIELCh(71, 14.773, 64.071)

Conversions

Conversions Part 1

Format	Color
Hex	C3A996
RGB	195, 169, 150
RGB Percent	76%, 66%, 59%
CMY	0.2352, 0.3372, 0.4117
CMYK	0.00, 0.13, 0.23, 0.24
HSL	25°, 27%, 68%
HSV	25°, 23%, 76%
XYZ	42.2060, 42.1875, 34.7784
YIQ	174.6080, 21.5950, -0.3970

Conversions

Conversions Part 2

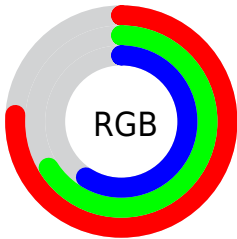
Format	Color
R_{YB}	195, 183, 150
Decimal	12822934
CIE _{Lab}	71.00, 6.46, 13.29
CIE _{LCh}	71, 14.773, 64.071
Yxy	42.1875, 0.3542, 0.3540
Android (android.graphics.Color)	4291013014 (0xFFC3A996)
YUV	174.6080, -12.1317, 17.8838
Hunter-Lab	64.9519, 2.3241, 13.7196

Details

The CIELCh color $71, 14.773, 64.071$ is a light color, and the websafe version is hex `CC9999`. A complement of this color would be $71, 13.476, 249.666$, and the grayscale version is $71, 0.009, 296.813$.

A 20% lighter version of the original color is $91, 14.825, 63.828$, and $51, 14.927, 64.151$ is the 20% darker color. If you saturate the color by 10%, you get $68, 21.830, 63.044$, and if you desaturate by 10%, it is $74, 8.124, 65.122$.

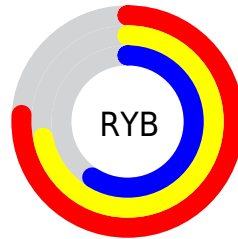
Distribution



Red (76%)

Green (66%)

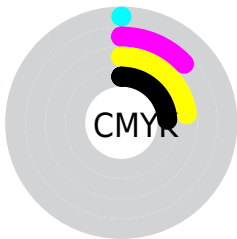
Blue (59%)



Red (76%)

Yellow (72%)

Blue (59%)

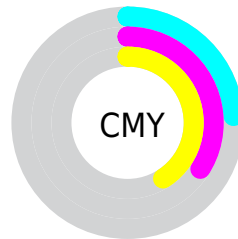


Cyan (0%)

Magenta (13%)

Yellow (23%)

Black (24%)



Cyan (24%)

Magenta (34%)

Yellow (41%)


Brightness & Saturation Gradients

These gradients show how the CIELCh color 71, 14.773, 64.071 changes by changing the brightness by 10 percent. The first figure shows a shift by +10% for each color and the second figure -10%.

Similar to the brightness gradients but the following saturation gradients show a change of the CIELCh color 71, 14.773, 64.071 by changing the saturation by 10% instead.

 71, 14.773, 64.071

 71, 14.773, 64.071

 100, 14.773,
64.071

 61, 14.773, 64.071

 91, 14.773, 64.071

 51, 14.773, 64.071

 41, 14.773, 64.071

 31, 14.773, 64.071

 21, 14.773, 64.071

 11, 14.773, 64.071

 1, 14.773, 64.071

 0, 14.773, 64.071

 71, 14.773, 64.071

 71, 14.773, 64.071

68, 21.830, 63.044

74, 8.124, 65.122

65, 29.312, 62.028

78, 1.852, 66.017

61, 37.204, 61.039

81, 4.079, 247.412

58, 45.425, 60.057

85, 9.707, 248.403

56, 53.763, 59.020

88, 15.068,
249.417

53, 61.747, 57.770

91, 16.313,
234.623

51, 68.495, 55.980

49, 72.361, 54.507

94, 17.539,
210.512

96, 19.610,
198.212

Harmonies

Complementary

The Complementary color scheme is a pair of colors which are on the opposite of each other on the color wheel.



71, 14.773, 64.071



71, 13.476, 249.666

Rectangle

The Rectangle color scheme consists of four colors that form a rectangle on the color wheel.



71, 14.773, 64.071



71, 14.773, 114.071



71, 14.773, 244.071



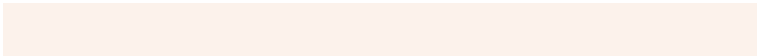
71, 14.773, 294.071

Sweetspot

The Sweet Spot groups the original color and five complimentary colors.



71, 14.773, 64.081



96, 5.269, 65.715



67, 22.286, 341.274



51, 3.458, 65.657



0, 0.000, 0.000



53, 0.007, 296.813

Same Dimension

The Same Dimension uses a secret algorithm to generate beautiful new colors.



71, 14.773, 64.081



88, 22.469, 63.523



77, 22.004, 104.208



39, 3.466, 65.497



41, 62.408, 55.084



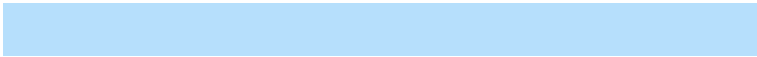
6, 11.499, 49.886

Inverse Universe

The Inverse Universe completely reimagines the original color for something new.



71, 13.476, 249.666



87, 20.004, 250.584



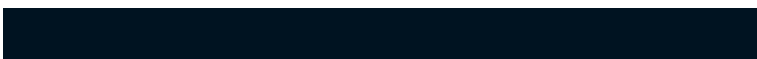
65, 22.992, 289.409



39, 3.352, 247.732



38, 43.249, 274.746



5, 11.792, 261.881

Previews

White Background



This preview shows how the CIELCh color 71, 14.773, 64.071 looks on a white background.

Color Contrast Check

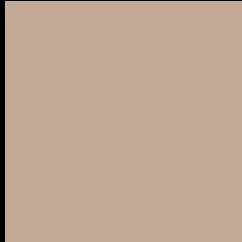
Large Text (above 18pt) WCAG AA × Fail

Any Text WCAG AA × Fail

Large Text (above 18pt) WCAG AAA × Fail

Any Text WCAG AAA × Fail

Black Background



This preview shows how the CIELCh color 71, 14.773, 64.071 looks on a black background.

Color Contrast Check

Large Text (above 18pt) WCAG AA ✓ Pass

Any Text WCAG AA ✓ Pass

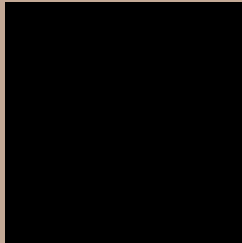
Large Text (above 18pt) WCAG AAA ✓ Pass

Any Text WCAG AAA ✓ Pass

If you want to check with other color combinations, try the [Color Contrast Checker](#).

CIELCh 71, 14.773, 64.071

Background



This preview shows how black text looks on a background with the CIELCh color 71, 14.773, 64.071.



This preview shows how white text looks on a background with the CIELCh color 71, 14.773, 64.071.

Color Blindness Simulation

Color vision deficiency is a very complex topic, and I could not describe the different causes any better than Wikipedia does, so if you want to learn more, you should check out their [article about color blindness](#).

Dichromacy



Original Color

71, 14.773, 64.071

Protanopia

71, 11.952, 91.671

Deuteranopia

71, 15.979, 55.366



Tritanopia

71, 14.394, 351.339

Trichromacy



Original Color
71, 14.773, 64.071

Protanomaly
71, 12.900, 81.401

Deuteranomaly
71, 15.650, 58.598

Tritanomaly
71, 12.071, 15.308

Monochromacy



Original Color
71, 14.773, 64.071

Achromatopsia
71, 0.009, 296.813

Achromatomaly
71, 5.129, 67.321

CSS Examples

Text

The CSS property to change the color of the text to CIELCh 71, 14.773, 64.071 is called "color". The color property can be set on classes, ids or directly on the HTML element.

This example shows how text in the color `rgb(195, 169, 150)` looks like.

```
.text, #text, p{  
    color:rgb(195, 169, 150)  
}
```

If you want to add a text shadow in that color use the text-shadow property, you can generate a text shadow directly with our [CSS Text Shadow Generator](#).

Here you see how black text with a 4 pixel rgb(195, 169, 150) colored shadow looks like.

```
.shadow{ text-shadow: 4px 4px 2px rgb(195, 169, 150) }
```

Border

The CSS property to change the border of an element to CIELCh 71, 14.773, 64.071 is called "border". The border property can be set on classes, ids or directly on the HTML element.

This example shows the color as border, it can be applied via the CSS property "border" or "border-color".

```
.border, #border, table{ border:4px solid rgb(195, 169, 150) }
```

If only the border color should be changed use the property `border-color`.

```
.border{ border-color:rgb(195, 169, 150) }
```

If you want to add a box shadow in that color use:

Here you see how a box with a 4 pixel `rgb(195, 169, 150)` colored shadow looks like.

```
.boxshadow{ -moz-box-shadow:4px 4px 4px  
4px rgb(195, 169, 150); -webkit-box-  
shadow:4px 4px 4px 4px rgb(195, 169, 150);  
box-shadow:4px 4px 4px 4px rgb(195, 169,  
150) }
```

Background

The CSS property to change the background color of an element to CIELCh 71, 14.773, 64.071 is called "background". The background property can be set on classes, ids or directly on the HTML element.

```
.background, #background, body{  
background: rgb(195, 169, 150) }
```

If only the background color should be changed can be used:

```
.background{ background-color: rgb(195,  
169, 150) }
```

This example shows the color as background, it is applied via the CSS property "background".

To optimize and compress your CSS code, you can use our [online CSS compressor and optimizer](#) based on csstidy. If you want to create a linear or radial gradient as background or border, check our [CSS Gradient Generator](#).

Hey! You found this booklet interesting? Support Converting Colors with the new Membership Option!

The pro membership hides all ads, plus gives you double the colors in the color bucket, and more awesome pro features!

[Learn more, Memberships starting at \\$2.50/m!](#)

**Follow me
on Twitter!**

@ConvertingColor