

Converting Colors

CIELCh(71, 14.735, 21.118)

Have a look what the booklet for
CIELCh(71, 14.735, 21.118) contains.

CIELCh(71, 14.496, 20.670)	3
<i>Conversions</i>	4
<i>Details</i>	6
<i>Harmonies</i>	11
<i>Previews</i>	20
<i>Color Blindness Simulation</i>	23
<i>CSS Examples</i>	26

Color

CIELCh(71, 14.496, 20.670)

Conversions

Conversions Part 1

Format	Color
Hex	CAA5A5
RGB	202, 165, 165
RGB Percent	79%, 65%, 65%
CMY	0.2078, 0.3529, 0.3529
CMYK	0.00, 0.18, 0.18, 0.21
HSL	0°, 26%, 72%
HSV	0°, 18%, 79%
XYZ	44.6080, 42.1875, 41.3927
YIQ	176.0630, 22.0520, 7.8440

Conversions

Conversions Part 2

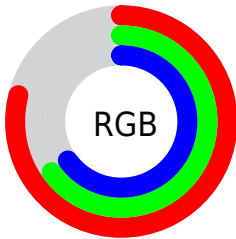
Format	Color
R _Y B	202, 165, 165
Decimal	13280677
CIE Lab	71.00, 13.56, 5.12
CIE LCh	71, 14.496, 20.670
Yxy	42.1875, 0.3480, 0.3291
Android (android.graphics.Color)	4291470757 (0xFFCAA5A5)
YUV	176.0630, -5.4541, 22.7467
Hunter-Lab	64.9519, 8.9252, 7.6819

Details

The CIELCh color $71, 14.496, 20.670$ is a light color, and the websafe version is hex `CC9999`. A complement of this color would be $79, 12.867, 198.494$, and the grayscale version is $72, 0.009, 296.813$.

A 20% lighter version of the original color is $91, 12.899, 20.288$, and $51, 14.362, 21.077$ is the 20% darker color. If you saturate the color by 10%, you get $66, 23.283, 21.705$, and if you desaturate by 10%, it is $77, 6.327, 19.848$.

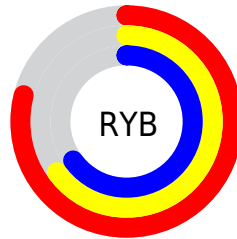
Distribution



Red (79%)

Green (65%)

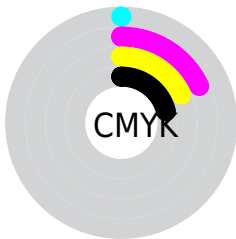
Blue (65%)



Red (79%)

Yellow (65%)

Blue (65%)

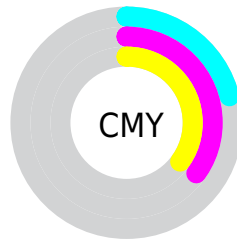


Cyan (0%)

Magenta (18%)

Yellow (18%)

Black (21%)



Cyan (21%)

Magenta (35%)

Yellow (35%)

Brightness & Saturation Gradients

These gradients show how the CIELCh color 71, 14.496, 20.670 changes by changing the brightness by 10 percent. The first figure shows a shift by +10% for each color and the second figure -10%.

Similar to the brightness gradients but the following saturation gradients show a change of the CIELCh color 71, 14.496, 20.670 by changing the saturation by 10% instead.

71, 14.496, 20.670

71, 14.496, 20.670

100, 14.496,
20.670

61, 14.496, 20.670

91, 14.496, 20.670

51, 14.496, 20.670

41, 14.496, 20.670

31, 14.496, 20.670

21, 14.496, 20.670

11, 14.496, 20.670

1, 14.496, 20.670

0, 14.496, 20.670

71, 14.496, 20.670

71, 14.496, 20.670

66, 23.283, 21.705

77, 6.327, 19.848

60, 32.659, 23.036

82, 1.230, 199.780

56, 42.510, 24.772

88, 8.219, 198.918

51, 52.634, 27.025

94, 14.694,
198.509

48, 62.728, 29.876

97, 17.486,
198.347

45, 72.367, 33.274

43, 80.811, 36.804

42, 86.775, 39.544

42, 87.742, 40.001

Harmonies

Complementary

The Complementary color scheme is a pair of colors which are on the opposite of each other on the color wheel.



71, 14.496, 20.670



79, 12.867, 198.494

Rectangle

The Rectangle color scheme consists of four colors that form a rectangle on the color wheel.



71, 14.496, 20.670



71, 14.496, 70.670



71, 14.496, 200.670



71, 14.496, 250.670

Sweetspot

The Sweet Spot groups the original color and five complimentary colors.



71, 14.494, 20.678



97, 4.538, 19.575



72, 24.236, 325.430



51, 3.105, 19.639



0, 0.000, 0.000



53, 0.007, 296.813

Same Dimension

The Same Dimension uses a secret algorithm to generate beautiful new colors.



71, 14.494, 20.678



85, 21.361, 21.057



76, 12.316, 73.151



40, 4.369, 19.933



34, 75.552, 39.824



4, 17.909, 19.410

Inverse Universe

The Inverse Universe completely reimagines the original color for something new.



79, 12.867, 198.494



96, 18.434, 198.296



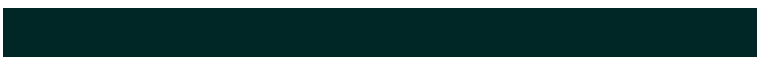
74, 11.744, 258.014



42, 4.119, 198.986



62, 36.295, 196.403



13, 13.512, 196.399

Previews

White Background



This preview shows how the CIELCh color 71, 14.496, 20.670 looks on a white background.

Color Contrast Check

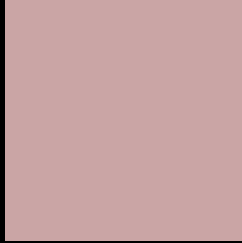
Large Text (above 18pt) WCAG AA × Fail

Any Text WCAG AA × Fail

Large Text (above 18pt) WCAG AAA × Fail

Any Text WCAG AAA × Fail

Black Background



This preview shows how the CIELCh color 71, 14.496, 20.670 looks on a black background.

Color Contrast Check

Large Text (above 18pt) WCAG AA ✓ Pass

Any Text WCAG AA ✓ Pass

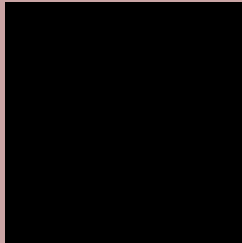
Large Text (above 18pt) WCAG AAA ✓ Pass

Any Text WCAG AAA ✓ Pass

If you want to check with other color combinations, try the [Color Contrast Checker](#).

CIELCh 71, 14.496, 20.670

Background



This preview shows how black text looks on a background with the CIELCh color 71, 14.496, 20.670.



This preview shows how white text looks on a background with the CIELCh color 71, 14.496, 20.670.

Color Blindness Simulation

Color vision deficiency is a very complex topic, and I could not describe the different causes any better than Wikipedia does, so if you want to learn more, you should check out their [article about color blindness](#).

Dichromacy



Original Color

71, 14.496, 20.670

Protanopia

71, 2.489, 60.263

Deuteranopia

71, 10.392, 32.242



Tritanopia
71, 16.832, 356.214

Trichromacy



Original Color
71, 14.496, 20.670

Protanomaly
71, 6.630, 29.306

Deuteranomaly
71, 11.863, 28.236

Tritanomaly
71, 15.647, 4.775

Monochromacy



Original Color
71, 14.496, 20.670

Achromatopsia
72, 0.009, 296.813

Achromatomaly
71, 4.952, 19.732

CSS Examples

Text

The CSS property to change the color of the text to CIELCh 71, 14.496, 20.670 is called "color". The color property can be set on classes, ids or directly on the HTML element.

This example shows how text in the color `rgb(202, 165, 165)` looks like.

```
.text, #text, p{  
    color:rgb(202, 165, 165)  
}
```

If you want to add a text shadow in that color use the text-shadow property, you can generate a text shadow directly with our [CSS Text Shadow Generator](#).

Here you see how black text with a 4 pixel rgb(202, 165, 165) colored shadow looks like.

```
.shadow{ text-shadow: 4px 4px 2px rgb(202, 165, 165) }
```

Border

The CSS property to change the border of an element to CIELCh 71, 14.496, 20.670 is called "border". The border property can be set on classes, ids or directly on the HTML element.

This example shows the color as border, it can be applied via the CSS property "border" or "border-color".

```
.border, #border, table{ border:4px solid rgb(202, 165, 165) }
```

If only the border color should be changed use the property `border-color`.

```
.border{ border-color:rgb(202, 165, 165) }
```

If you want to add a box shadow in that color use:

Here you see how a box with a 4 pixel `rgb(202, 165, 165)` colored shadow looks like.

```
.boxshadow{ -moz-box-shadow:4px 4px 4px  
4px rgb(202, 165, 165); -webkit-box-  
shadow:4px 4px 4px 4px rgb(202, 165, 165);  
box-shadow:4px 4px 4px 4px rgb(202, 165,  
165) }
```

Background

The CSS property to change the background color of an element to CIELCh 71, 14.496, 20.670 is called "background". The background property can be set on classes, ids or directly on the HTML element.

```
.background, #background, body{  
background: rgb(202, 165, 165) }
```

If only the background color should be changed can be used:

```
.background{ background-color: rgb(202,  
165, 165) }
```

This example shows the color as background, it is applied via the CSS property "background".

To optimize and compress your CSS code, you can use our [online CSS compressor and optimizer](#) based on csstidy. If you want to create a linear or radial gradient as background or border, check our [CSS Gradient Generator](#).

Hey! You found this booklet interesting? Support Converting Colors with the new Membership Option!

The pro membership hides all ads, plus gives you double the colors in the color bucket, and more awesome pro features!

[Learn more, Memberships starting at \\$2.50/m!](#)

**Follow me
on Twitter!**

@ConvertingColor