

Converting Colors

CIELCh(71, 14.867, 39.165)

Have a look what the booklet for
CIELCh(71, 14.867, 39.165) contains.

CIELCh(71, 14.828, 39.644)	3
<i>Conversions</i>	4
<i>Details</i>	6
<i>Harmonies</i>	11
<i>Previews</i>	20
<i>Color Blindness Simulation</i>	23
<i>CSS Examples</i>	26

Color

CIELCh(71, 14.828, 39.644)

Conversions

Conversions Part 1

Format	Color
Hex	C9A69D
RGB	201, 166, 157
RGB Percent	79%, 65%, 62%
CMY	0.2113, 0.3485, 0.3839
CMYK	0.00, 0.17, 0.22, 0.21
HSL	12°, 29%, 70%
HSV	12°, 22%, 79%
XYZ	43.8733, 42.1875, 37.7803
YIQ	175.4390, 23.7490, 4.6210

Conversions

Conversions Part 2

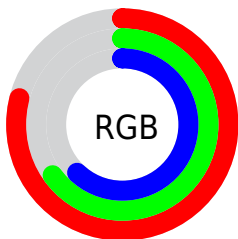
Format	Color
R _Y B	201, 168, 157
Decimal	13215389
CIE Lab	71.00, 11.42, 9.46
CIE LCh	71, 14.828, 39.644
Yxy	42.1875, 0.3543, 0.3407
Android (android.graphics.Color)	4291405469 (0xFFC9A69D)
YUV	175.4390, -9.0904, 22.4170
Hunter-Lab	64.9519, 6.9062, 10.9794

Details

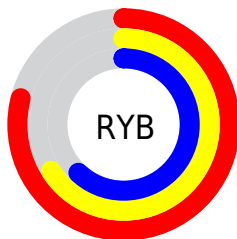
The CIELCh color $71, 14.828, 39.644$ is a light color, and the websafe version is hex `CC9999`. A complement of this color would be $76, 12.832, 220.938$, and the grayscale version is $72, 0.009, 296.813$.

A 20% lighter version of the original color is $91, 13.548, 40.177$, and $51, 14.630, 39.186$ is the 20% darker color. If you saturate the color by 10%, you get $67, 22.522, 39.708$, and if you desaturate by 10%, it is $76, 7.725, 39.711$.

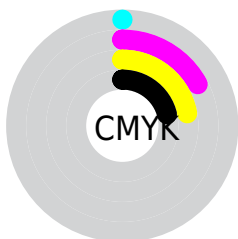
Distribution



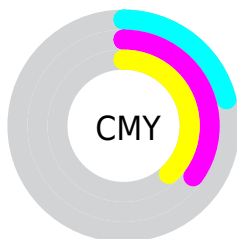
- Red (79%)
- Green (65%)
- Blue (62%)



- Red (79%)
- Yellow (66%)
- Blue (62%)



- Cyan (0%)
- Magenta (17%)
- Yellow (22%)
- Black (21%)



- Cyan (21%)
- Magenta (35%)
- Yellow (38%)


Brightness & Saturation Gradients

These gradients show how the CIELCh color 71, 14.828, 39.644 changes by changing the brightness by 10 percent. The first figure shows a shift by +10% for each color and the second figure -10%.

Similar to the brightness gradients but the following saturation gradients show a change of the CIELCh color 71, 14.828, 39.644 by changing the saturation by 10% instead.

 71, 14.828, 39.644

 71, 14.828, 39.644

 100, 14.828,
39.644

 61, 14.828, 39.644

 91, 14.828, 39.644

 51, 14.828, 39.644

 41, 14.828, 39.644

 31, 14.828, 39.644

 21, 14.828, 39.644

 11, 14.828, 39.644

 1, 14.828, 39.644

 0, 14.828, 39.644

 71, 14.828, 39.644

 71, 14.828, 39.644

67, 22.522, 39.708

76, 7.725, 39.711

62, 30.835, 39.925

80, 1.173, 39.511

58, 39.757, 40.345

85, 4.883, 220.355

55, 49.216, 40.992

90, 10.497,
220.618

51, 59.019, 41.845

94, 15.370,
215.974

48, 68.732, 42.770

46, 77.379, 43.359

96, 17.758,
198.329

44, 82.988, 43.504

Harmonies

Complementary

The Complementary color scheme is a pair of colors which are on the opposite of each other on the color wheel.



71, 14.828, 39.644



76, 12.832, 220.938

Rectangle

The Rectangle color scheme consists of four colors that form a rectangle on the color wheel.



71, 14.828, 39.644



71, 14.828, 89.644



71, 14.828, 219.644



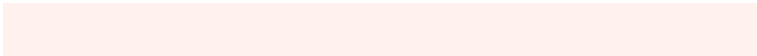
71, 14.828, 269.644

Sweetspot

The Sweet Spot groups the original color and five complimentary colors.



71, 14.827, 39.653



96, 5.412, 39.743



70, 25.157, 331.901



51, 3.525, 39.741



0, 0.000, 0.000



53, 0.007, 296.813

Same Dimension

The Same Dimension uses a secret algorithm to generate beautiful new colors.



71, 14.827, 39.653



86, 21.764, 39.660



77, 17.291, 90.973



40, 3.617, 39.731



36, 70.683, 43.868



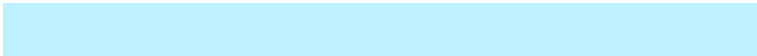
5, 14.130, 31.436

Inverse Universe

The Inverse Universe completely reimagines the original color for something new.



76, 12.832, 220.938



92, 18.216, 221.217



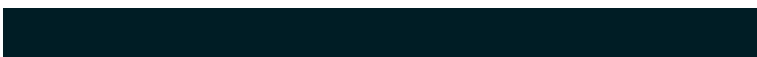
70, 17.353, 276.794



41, 3.414, 220.397



50, 31.508, 236.165



9, 11.154, 227.099

Previews

White Background



This preview shows how the CIELCh color 71, 14.828, 39.644 looks on a white background.

Color Contrast Check

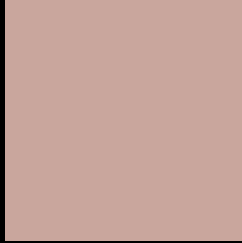
Large Text (above 18pt) WCAG AA × Fail

Any Text WCAG AA × Fail

Large Text (above 18pt) WCAG AAA × Fail

Any Text WCAG AAA × Fail

Black Background



This preview shows how the CIELCh color 71, 14.828, 39.644 looks on a black background.

Color Contrast Check

Large Text (above 18pt) WCAG AA ✓ Pass

Any Text WCAG AA ✓ Pass

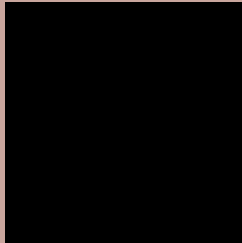
Large Text (above 18pt) WCAG AAA ✓ Pass

Any Text WCAG AAA ✓ Pass

If you want to check with other color combinations, try the [Color Contrast Checker](#).

CIELCh 71, 14.828, 39.644

Background



This preview shows how black text looks on a background with the CIELCh color 71, 14.828, 39.644.



This preview shows how white text looks on a background with the CIELCh color 71, 14.828, 39.644.

Color Blindness Simulation

Color vision deficiency is a very complex topic, and I could not describe the different causes any better than Wikipedia does, so if you want to learn more, you should check out their [article about color blindness](#).

Dichromacy



Original Color

71, 14.828, 39.644

Protanopia

71, 7.056, 86.869

Deuteranopia

71, 13.026, 47.413



Tritanopia
71, 16.832, 356.214

Trichromacy



Original Color
71, 14.828, 39.644

Protanomaly
71, 8.916, 57.315

Deuteranomaly
71, 13.517, 43.917

Tritanomaly
71, 14.986, 10.362

Monochromacy



Original Color
71, 14.828, 39.644

Achromatopsia
72, 0.009, 296.813

Achromatomaly
71, 5.236, 37.827

CSS Examples

Text

The CSS property to change the color of the text to CIELCh 71, 14.828, 39.644 is called "color". The color property can be set on classes, ids or directly on the HTML element.

This example shows how text in the color `rgb(201, 166, 157)` looks like.

```
.text, #text, p{  
    color:rgb(201, 166, 157)  
}
```

If you want to add a text shadow in that color use the text-shadow property, you can generate a text shadow directly with our [CSS Text Shadow Generator](#).

Here you see how black text with a 4 pixel rgb(201, 166, 157) colored shadow looks like.

```
.shadow{ text-shadow: 4px 4px 2px rgb(201, 166, 157) }
```

Border

The CSS property to change the border of an element to CIELCh 71, 14.828, 39.644 is called "border". The border property can be set on classes, ids or directly on the HTML element.

This example shows the color as border, it can be applied via the CSS property "border" or "border-color".

```
.border, #border, table{ border:4px solid rgb(201, 166, 157) }
```

If only the border color should be changed use the property `border-color`.

```
.border{ border-color:rgb(201, 166, 157) }
```

If you want to add a box shadow in that color use:

Here you see how a box with a 4 pixel `rgb(201, 166, 157)` colored shadow looks like.

```
.boxshadow{ -moz-box-shadow:4px 4px 4px  
4px rgb(201, 166, 157); -webkit-box-  
shadow:4px 4px 4px 4px rgb(201, 166, 157);  
box-shadow:4px 4px 4px 4px rgb(201, 166,  
157) }
```

Background

The CSS property to change the background color of an element to CIELCh 71, 14.828, 39.644 is called "background". The background property can be set on classes, ids or directly on the HTML element.

```
.background, #background, body{  
background: rgb(201, 166, 157) }
```

If only the background color should be changed can be used:

```
.background{ background-color: rgb(201,  
166, 157) }
```

This example shows the color as background, it is applied via the CSS property "background".

To optimize and compress your CSS code, you can use our [online CSS compressor and optimizer](#) based on csstidy. If you want to create a linear or radial gradient as background or border, check our [CSS Gradient Generator](#).

Hey! You found this booklet interesting? Support Converting Colors with the new Membership Option!

The pro membership hides all ads, plus gives you double the colors in the color bucket, and more awesome pro features!

[Learn more, Memberships starting at \\$2.50/m!](#)

**Follow me
on Twitter!**

@ConvertingColor