

Converting Colors

CIELCh(71, 14.913, 47.573)

Have a look what the booklet for
CIELCh(71, 14.913, 47.573) contains.

CIELCh(71, 15.063, 48.158)	3
<i>Conversions</i>	4
<i>Details</i>	6
<i>Harmonies</i>	11
<i>Previews</i>	20
<i>Color Blindness Simulation</i>	23
<i>CSS Examples</i>	26

Color

CIELCh(71, 15.063, 48.158)

Conversions

Conversions Part 1

Format	Color
Hex	C8A79A
RGB	200, 167, 154
RGB Percent	78%, 65%, 60%
CMY	0.2162, 0.3455, 0.3965
CMYK	0.00, 0.17, 0.23, 0.22
HSL	17°, 29%, 69%
HSV	17°, 23%, 78%
XYZ	43.4084, 42.1875, 36.3776
YIQ	175.3850, 23.8410, 2.9530

Conversions

Conversions Part 2

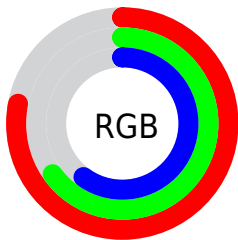
Format	Color
RYB	200, 172, 154
Decimal	13150106
CIELab	71.00, 10.05, 11.22
CIELCh	71, 15.063, 48.158
Yxy	42.1875, 0.3559, 0.3459
Android (android.graphics.Color)	4291340186 (0xFFC8A79A)
YUV	175.3850, -10.5428, 21.5874
Hunter-Lab	64.9519, 5.6286, 12.2598

Details

The CIELCh color **71, 15.063, 48.158** is a light color, and the websafe version is hex **CC9999**. A complement of this color would be **74, 13.118, 231.318**, and the grayscale version is **72, 0.009, 296.813**.

A 20% lighter version of the original color is **91, 14.402, 50.106**, and **51, 14.887, 48.285** is the 20% darker color. If you saturate the color by 10%, you get **67, 22.481, 47.784**, and if you desaturate by 10%, it is **75, 8.191, 48.625**.

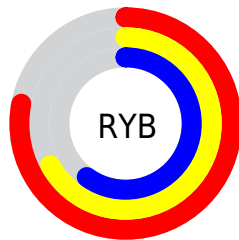
Distribution



Red (78%)

Green (65%)

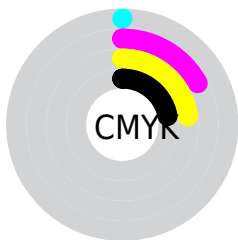
Blue (60%)



Red (78%)

Yellow (67%)

Blue (60%)

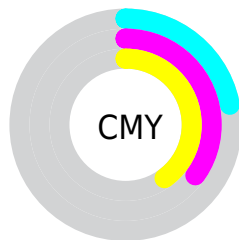


Cyan (0%)

Magenta (17%)

Yellow (23%)

Black (22%)



Cyan (22%)

Magenta (35%)

Yellow (40%)


Brightness & Saturation Gradients

These gradients show how the CIELCh color 71, 15.063, 48.158 changes by changing the brightness by 10 percent. The first figure shows a shift by +10% for each color and the second figure -10%.

Similar to the brightness gradients but the following saturation gradients show a change of the CIELCh color 71, 15.063, 48.158 by changing the saturation by 10% instead.

 71, 15.063, 48.158

 71, 15.063, 48.158

 100, 15.063,
48.158

 61, 15.063, 48.158

 91, 15.063, 48.158

 51, 15.063, 48.158

 41, 15.063, 48.158

 31, 15.063, 48.158

 21, 15.063, 48.158

 11, 15.063, 48.158

 1, 15.063, 48.158

 0, 15.063, 48.158

 71, 15.063, 48.158

 71, 15.063, 48.158

67, 22.481, 47.784

75, 8.191, 48.625

63, 30.475, 47.511

79, 1.822, 48.961

59, 39.043, 47.370

84, 4.094, 229.971

56, 48.120, 47.363

88, 9.609, 230.534

53, 57.514, 47.446

92, 14.769,
231.167

50, 66.764, 47.458

96, 17.450,
201.886

47, 74.877, 46.998

46, 79.585, 46.451

96, 18.138,
198.305

Harmonies

Complementary

The Complementary color scheme is a pair of colors which are on the opposite of each other on the color wheel.



71, 15.063, 48.158



74, 13.118, 231.318

Rectangle

The Rectangle color scheme consists of four colors that form a rectangle on the color wheel.



71, 15.063, 48.158



71, 15.063, 98.158



71, 15.063, 228.158



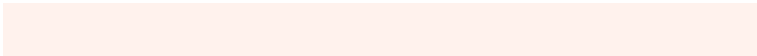
71, 15.063, 278.158

Sweetspot

The Sweet Spot groups the original color and five complimentary colors.



71, 15.062, 48.168



96, 5.250, 48.892



69, 25.130, 334.527



51, 3.419, 48.867



0, 0.000, 0.000



53, 0.007, 296.813

Same Dimension

The Same Dimension uses a secret algorithm to generate beautiful new colors.



71, 15.062, 48.168



86, 22.816, 47.949



77, 19.305, 95.595



40, 3.507, 48.795



37, 68.093, 46.924



5, 13.652, 36.744

Inverse Universe

The Inverse Universe completely reimagines the original color for something new.



74, 13.118, 231.318



90, 19.151, 231.927



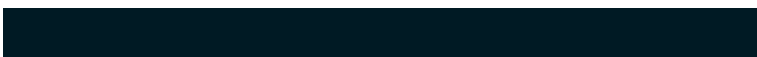
68, 19.675, 281.463



40, 3.330, 230.138



46, 34.035, 252.309



8, 11.264, 241.670

Previews

White Background



This preview shows how the CIELCh color 71, 15.063, 48.158 looks on a white background.

Color Contrast Check

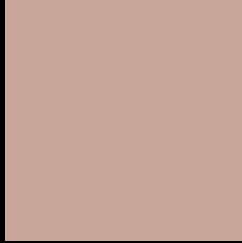
Large Text (above 18pt) WCAG AA × Fail

Any Text WCAG AA × Fail

Large Text (above 18pt) WCAG AAA × Fail

Any Text WCAG AAA × Fail

Black Background



This preview shows how the CIELCh color 71, 15.063, 48.158 looks on a black background.

Color Contrast Check

Large Text (above 18pt) WCAG AA ✓ Pass

Any Text WCAG AA ✓ Pass

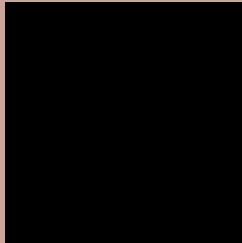
Large Text (above 18pt) WCAG AAA ✓ Pass

Any Text WCAG AAA ✓ Pass

If you want to check with other color combinations, try the [Color Contrast Checker](#).

CIELCh 71, 15.063, 48.158

Background



This preview shows how black text looks on a background with the CIELCh color 71, 15.063, 48.158.



This preview shows how white text looks on a background with the CIELCh color 71, 15.063, 48.158.

Color Blindness Simulation

Color vision deficiency is a very complex topic, and I could not describe the different causes any better than Wikipedia does, so if you want to learn more, you should check out their [article about color blindness](#).

Dichromacy



Original Color

71, 15.063, 48.158

Protanopia

71, 9.237, 89.465

Deuteranopia

71, 14.277, 52.241



Tritanopia
71, 16.266, 357.347

Trichromacy



Original Color
71, 15.063, 48.158

Protanomaly
71, 10.581, 69.937

Deuteranomaly
71, 14.627, 51.409

Tritanomaly
71, 14.483, 14.267

Monochromacy



Original Color
71, 15.063, 48.158

Achromatopsia
71, 0.009, 296.813

Achromatomaly
71, 5.346, 50.169

CSS Examples

Text

The CSS property to change the color of the text to CIELCh 71, 15.063, 48.158 is called "color". The color property can be set on classes, ids or directly on the HTML element.

This example shows how text in the color `rgb(200, 167, 154)` looks like.

```
.text, #text, p{  
    color:rgb(200, 167, 154)  
}
```

If you want to add a text shadow in that color use the text-shadow property, you can generate a text shadow directly with our [CSS Text Shadow Generator](#).

Here you see how black text with a 4 pixel rgb(200, 167, 154) colored shadow looks like.

```
.shadow{ text-shadow: 4px 4px 2px rgb(200, 167, 154) }
```

Border

The CSS property to change the border of an element to CIELCh 71, 15.063, 48.158 is called "border". The border property can be set on classes, ids or directly on the HTML element.

This example shows the color as border, it can be applied via the CSS property "border" or "border-color".

```
.border, #border, table{ border:4px solid rgb(200, 167, 154) }
```

If only the border color should be changed use the property `border-color`.

```
.border{ border-color:rgb(200, 167, 154) }
```

If you want to add a box shadow in that color use:

Here you see how a box with a 4 pixel `rgb(200, 167, 154)` colored shadow looks like.

```
.boxshadow{ -moz-box-shadow:4px 4px 4px  
4px rgb(200, 167, 154); -webkit-box-  
shadow:4px 4px 4px 4px rgb(200, 167, 154);  
box-shadow:4px 4px 4px 4px rgb(200, 167,  
154) }
```

Background

The CSS property to change the background color of an element to CIELCh 71, 15.063, 48.158 is called "background". The background property can be set on classes, ids or directly on the HTML element.

```
.background, #background, body{  
background: rgb(200, 167, 154) }
```

If only the background color should be changed can be used:

```
.background{ background-color: rgb(200,  
167, 154) }
```

This example shows the color as background, it is applied via the CSS property "background".

To optimize and compress your CSS code, you can use our [online CSS compressor and optimizer](#) based on csstidy. If you want to create a linear or radial gradient as background or border, check our [CSS Gradient Generator](#).

Hey! You found this booklet interesting? Support Converting Colors with the new Membership Option!

The pro membership hides all ads, plus gives you double the colors in the color bucket, and more awesome pro features!

[Learn more, Memberships starting at \\$2.50/m!](#)

**Follow me
on Twitter!**

@ConvertingColor