

# Converting Colors

CIELCh(71, 15.039, 20.243)

Have a look what the booklet for  
CIELCh(71, 15.039, 20.243) contains.

<b>CIELCh(71, 14.898, 20.707)</b> .....	3
<i><b>Conversions</b></i> .....	4
<i><b>Details</b></i> .....	6
<i><b>Harmonies</b></i> .....	11
<i><b>Previews</b></i> .....	20
<i><b>Color Blindness Simulation</b></i> .....	23
<i><b>CSS Examples</b></i> .....	26

# Color

**CIELCh(71, 14.898, 20.707)**

# Conversions

## Conversions Part 1

Format	Color
Hex	CBA5A5
RGB	203, 165, 165
RGB Percent	80%, 65%, 65%
CMY	0.2049, 0.3539, 0.3539
CMYK	0.00, 0.19, 0.19, 0.20
HSL	0°, 27%, 72%
HSV	0°, 19%, 80%
XYZ	44.7364, 42.1875, 41.2635
YIQ	176.3620, 22.6480, 8.0560

# Conversions

## Conversions Part 2

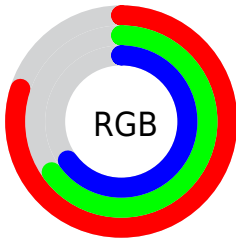
<b>Format</b>	<b>Color</b>
R <sub>Y</sub> B	203, 165, 165
Decimal	13346213
CIE Lab	71.00, 13.94, 5.27
CIE LCh	71, 14.898, 20.707
Yxy	42.1875, 0.3490, 0.3291
Android (android.graphics.Color)	4291536293 (0xFFCBA5A5)
YUV	176.3620, -5.6015, 23.3615
Hunter-Lab	64.9519, 9.2783, 7.7998

# Details

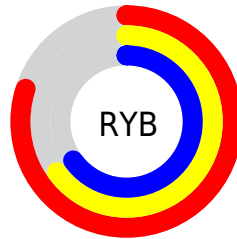
The CIELCh color  $71, 14.898, 20.707$  is a light color, and the websafe version is hex `CC9999`. A complement of this color would be  $79, 13.185, 198.470$ , and the grayscale version is  $72, 0.009, 296.813$ .

A 20% lighter version of the original color is  $91, 12.899, 20.288$ , and  $51, 14.796, 21.130$  is the 20% darker color. If you saturate the color by 10%, you get  $66, 23.738, 21.754$ , and if you desaturate by 10%, it is  $77, 6.679, 19.879$ .

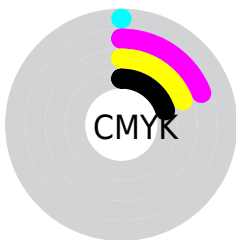
# Distribution



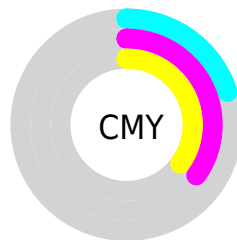
- Red (80%)
- Green (65%)
- Blue (65%)



- Red (80%)
- Yellow (65%)
- Blue (65%)



- Cyan (0%)
- Magenta (19%)
- Yellow (19%)
- Black (20%)



- Cyan (20%)
- Magenta (35%)
- Yellow (35%)

# Brightness & Saturation Gradients

These gradients show how the CIELCh color 71, 14.898, 20.707 changes by changing the brightness by 10 percent. The first figure shows a shift by +10% for each color and the second figure -10%.

Similar to the brightness gradients but the following saturation gradients show a change of the CIELCh color 71, 14.898, 20.707 by changing the saturation by 10% instead.



71, 14.898, 20.707

71, 14.898, 20.707

100, 14.898,  
20.707

61, 14.898, 20.707

91, 14.898, 20.707

51, 14.898, 20.707

41, 14.898, 20.707

31, 14.898, 20.707

21, 14.898, 20.707

11, 14.898, 20.707

1, 14.898, 20.707

0, 14.898, 20.707

71, 14.898, 20.707

71, 14.898, 20.707

66, 23.738, 21.754

77, 6.679, 19.879

60, 33.164, 23.100

82, 0.927, 199.950

56, 43.061, 24.857

88, 7.959, 198.936

51, 53.221, 27.135

94, 14.473,  
198.522

48, 63.334, 30.013

97, 17.261,  
198.361

45, 72.969, 33.431

43, 81.355, 36.948

42, 87.250, 39.657

42, 87.979, 40.001

# Harmonies

# Complementary

The Complementary color scheme is a pair of colors which are on the opposite of each other on the color wheel.



71, 14.898, 20.707



79, 13.185, 198.470

# Rectangle

The Rectangle color scheme consists of four colors that form a rectangle on the color wheel.



71, 14.898, 20.707



71, 14.898, 70.707



71, 14.898, 200.707



71, 14.898, 250.707

# Sweetspot

The Sweet Spot groups the original color and five complimentary colors.



71, 14.896, 20.715



96, 5.467, 19.663



72, 24.868, 325.454



51, 3.636, 19.719



0, 0.000, 0.000



53, 0.007, 296.813



# Same Dimension

The Same Dimension uses a secret algorithm to generate beautiful new colors.



71, 14.896, 20.715



85, 21.361, 21.055



76, 12.649, 73.099



40, 4.369, 19.931



34, 75.553, 39.824



4, 17.910, 19.409



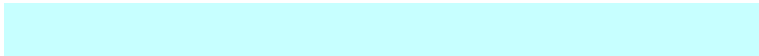


# Inverse Universe

The Inverse Universe completely reimagines the original color for something new.



79, 13.185, 198.470



96, 18.435, 198.294



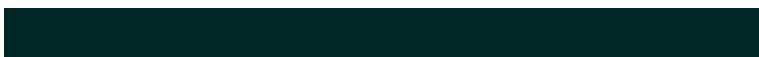
74, 12.047, 258.083



42, 4.119, 198.984



62, 36.297, 196.399

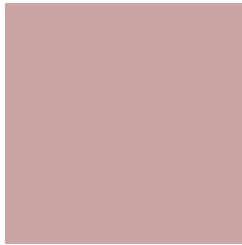


13, 13.512, 196.396



# Previews

## White Background



This preview shows how the CIELCh color 71, 14.898, 20.707 looks on a white background.

## Color Contrast Check

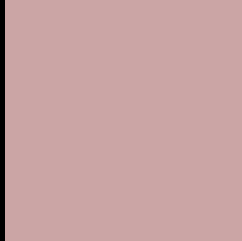
Large Text (above 18pt) WCAG AA × Fail

Any Text WCAG AA × Fail

Large Text (above 18pt) WCAG AAA × Fail

Any Text WCAG AAA × Fail

# Black Background



This preview shows how the CIE LCh color 71, 14.898, 20.707 looks on a black background.

## Color Contrast Check

Large Text (above 18pt) WCAG AA ✓ Pass

Any Text WCAG AA ✓ Pass

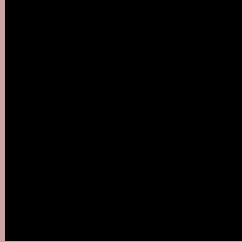
Large Text (above 18pt) WCAG AAA ✓ Pass

Any Text WCAG AAA ✓ Pass

If you want to check with other color combinations, try the [Color Contrast Checker](#).

**CIELCh 71, 14.898, 20.707**

## **Background**



This preview shows how black text looks on a background with the CIELCh color 71, 14.898, 20.707.



This preview shows how white text looks on a background with the CIELCh color 71, 14.898, 20.707.

# Color Blindness Simulation

Color vision deficiency is a very complex topic, and I could not describe the different causes any better than Wikipedia does, so if you want to learn more, you should check out their [article about color blindness](#).

## Dichromacy



### Original Color

71, 14.898, 20.707

### Protanopia

71, 2.875, 68.481

### Deuteranopia

71, 10.392, 32.242



## Tritanopia

71, 17.184, 356.804



# Trichromacy



**Original Color**  
71, 14.898, 20.707

**Protanomaly**  
71, 6.754, 33.826

**Deuteranomaly**  
71, 11.863, 28.236

**Tritanomaly**  
71, 16.026, 5.209

# Monochromacy



**Original Color**  
71, 14.898, 20.707

**Achromatopsia**  
72, 0.009, 296.813

**Achromatomaly**  
72, 5.338, 19.772

# CSS Examples

## Text

The CSS property to change the color of the text to CIELCh 71, 14.898, 20.707 is called "color". The color property can be set on classes, ids or directly on the HTML element.

This example shows how text in the color `rgb(203, 165, 165)` looks like.

```
.text, #text, p{  
    color:rgb(203, 165, 165)  
}
```

If you want to add a text shadow in that color use the text-shadow property, you can generate a text shadow directly with our [CSS Text Shadow Generator](#).

Here you see how black text with a 4 pixel rgb(203, 165, 165) colored shadow looks like.

```
.shadow{ text-shadow: 4px 4px 2px rgb(203, 165, 165) }
```

## Border

The CSS property to change the border of an element to CIELCh 71, 14.898, 20.707 is called "border". The border property can be set on classes, ids or directly on the HTML element.

This example shows the color as border, it can be applied via the CSS property "border" or "border-color".

```
.border, #border, table{ border:4px solid rgb(203, 165, 165) }
```

If only the border color should be changed use the property `border-color`.

```
.border{ border-color:rgb(203, 165, 165) }
```

If you want to add a box shadow in that color use:

Here you see how a box with a 4 pixel `rgb(203, 165, 165)` colored shadow looks like.

```
.boxshadow{ -moz-box-shadow:4px 4px 4px  
4px rgb(203, 165, 165); -webkit-box-  
shadow:4px 4px 4px 4px rgb(203, 165, 165);  
box-shadow:4px 4px 4px 4px rgb(203, 165,  
165) }
```

# Background

The CSS property to change the background color of an element to CIELCh 71, 14.898, 20.707 is called "background". The background property can be set on classes, ids or directly on the HTML element.

```
.background, #background, body{  
background: rgb(203, 165, 165) }
```

If only the background color should be changed can be used:

```
.background{ background-color: rgb(203,  
165, 165) }
```

This example shows the color as background, it is applied via the CSS property "background".

To optimize and compress your CSS code, you can use our [online CSS compressor and optimizer](#) based on csstidy. If you want to create a linear or radial gradient as background or border, check our [CSS Gradient Generator](#).

Hey! You found this booklet interesting? Support Converting Colors with the new Membership Option!

The pro membership hides all ads, plus gives you double the colors in the color bucket, and more awesome pro features!

**[Learn more, Memberships starting at \\$2.50/m!](#)**

**Follow me  
on Twitter!**

@ConvertingColor