

Converting Colors

CIELCh(71, 15.300, 20.744)

Have a look what the booklet for
CIELCh(71, 15.300, 20.744) contains.

CIELCh(71, 15.319, 20.752)	3
<i>Conversions</i>	4
<i>Details</i>	6
<i>Harmonies</i>	11
<i>Previews</i>	20
<i>Color Blindness Simulation</i>	23
<i>CSS Examples</i>	26

Color

CIELCh(71, 15.319, 20.752)

Conversions

Conversions Part 1

Format	Color
Hex	CCA4A4
RGB	204, 164, 164
RGB Percent	80%, 64%, 64%
CMY	0.2020, 0.3550, 0.3550
CMYK	0.00, 0.19, 0.19, 0.20
HSL	0°, 27%, 72%
HSV	0°, 19%, 80%
XYZ	44.8710, 42.1875, 41.1267
YIQ	175.9600, 23.8400, 8.4800

Conversions

Conversions Part 2

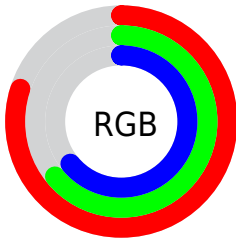
Format	Color
RYB	204, 164, 164
Decimal	13411492
CIELab	71.00, 14.33, 5.43
CIELCh	71, 15.319, 20.752
Yxy	42.1875, 0.3500, 0.3291
Android (android.graphics.Color)	4291601572 (0xFFCCA4A4)
YUV	175.9600, -5.8963, 24.5911
Hunter-Lab	64.9519, 9.6481, 7.9247

Details

The CIELCh color $71, 15.319, 20.752$ is a light color, and the websafe version is hex `CC9999`. A complement of this color would be $79, 13.515, 198.453$, and the grayscale version is $72, 0.009, 296.813$.

A 20% lighter version of the original color is $90, 13.288, 20.321$, and $51, 15.693, 21.251$ is the 20% darker color. If you saturate the color by 10%, you get $66, 24.213, 21.810$, and if you desaturate by 10%, it is $77, 7.047, 19.918$.

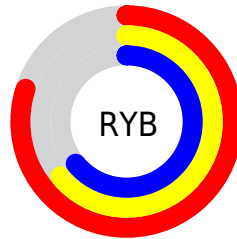
Distribution



Red (80%)

Green (64%)

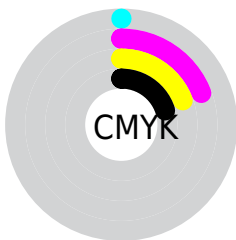
Blue (64%)



Red (80%)

Yellow (64%)

Blue (64%)

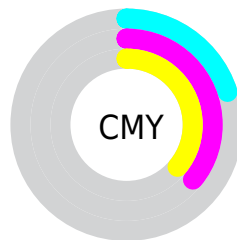


Cyan (0%)

Magenta (19%)

Yellow (19%)

Black (20%)



Cyan (20%)

Magenta (36%)

Yellow (36%)

Brightness & Saturation Gradients

These gradients show how the CIELCh color 71, 15.319, 20.752 changes by changing the brightness by 10 percent. The first figure shows a shift by +10% for each color and the second figure -10%.

Similar to the brightness gradients but the following saturation gradients show a change of the CIELCh color 71, 15.319, 20.752 by changing the saturation by 10% instead.

71, 15.319, 20.752

71, 15.319, 20.752

100, 15.319,
20.752

61, 15.319, 20.752

91, 15.319, 20.752

51, 15.319, 20.752

41, 15.319, 20.752

31, 15.319, 20.752

21, 15.319, 20.752

11, 15.319, 20.752

1, 15.319, 20.752

0, 15.319, 20.752

71, 15.319, 20.752

71, 15.319, 20.752

66, 24.213, 21.810

77, 7.047, 19.918

60, 33.692, 23.172

82, 0.607, 200.298

56, 43.636, 24.950

88, 7.685, 198.962

51, 53.832, 27.255

94, 14.240,
198.542

48, 63.965, 30.161

97, 17.026,
198.376

45, 73.594, 33.597

43, 81.917, 37.098

42, 87.747, 39.776

42, 88.226, 40.001

Harmonies

Complementary

The Complementary color scheme is a pair of colors which are on the opposite of each other on the color wheel.



71, 15.319, 20.752



79, 13.515, 198.453

Rectangle

The Rectangle color scheme consists of four colors that form a rectangle on the color wheel.



71, 15.319, 20.752



71, 15.319, 70.752



71, 15.319, 200.752



71, 15.319, 250.752

Sweetspot

The Sweet Spot groups the original color and five complimentary colors.



71, 15.317, 20.759



96, 5.467, 19.667



72, 25.530, 325.478



51, 3.636, 19.723



0, 0.000, 0.000



53, 0.007, 296.813

Same Dimension

The Same Dimension uses a secret algorithm to generate beautiful new colors.



71, 15.317, 20.759



84, 22.419, 21.161



76, 12.998, 73.044



40, 4.369, 19.935



34, 75.552, 39.825



4, 17.909, 19.411

Inverse Universe

The Inverse Universe completely reimagines the original color for something new.



79, 13.515, 198.453



96, 19.205, 198.249



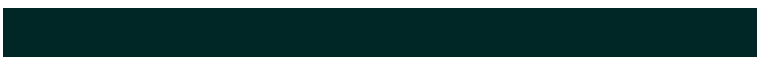
74, 12.363, 258.156



42, 4.118, 198.988



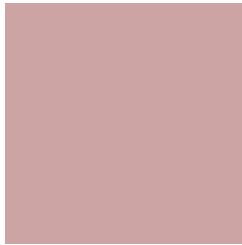
62, 36.294, 196.406



13, 13.512, 196.402

Previews

White Background



This preview shows how the CIELCh color 71, 15.319, 20.752 looks on a white background.

Color Contrast Check

Large Text (above 18pt) WCAG AA × Fail

Any Text WCAG AA × Fail

Large Text (above 18pt) WCAG AAA × Fail

Any Text WCAG AAA × Fail

Black Background



This preview shows how the CIELCh color 71, 15.319, 20.752 looks on a black background.

Color Contrast Check

Large Text (above 18pt) WCAG AA ✓ Pass

Any Text WCAG AA ✓ Pass

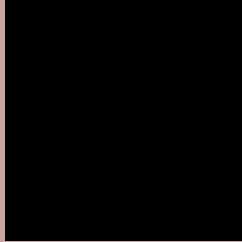
Large Text (above 18pt) WCAG AAA ✓ Pass

Any Text WCAG AAA ✓ Pass

If you want to check with other color combinations, try the [Color Contrast Checker](#).

CIELCh 71, 15.319, 20.752

Background



This preview shows how black text looks on a background with the CIELCh color 71, 15.319, 20.752.

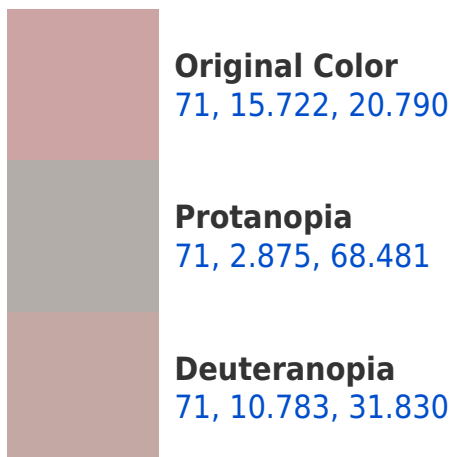


This preview shows how white text looks on a background with the CIELCh color 71, 15.319, 20.752.

Color Blindness Simulation

Color vision deficiency is a very complex topic, and I could not describe the different causes any better than Wikipedia does, so if you want to learn more, you should check out their [article about color blindness](#).

Dichromacy





Tritanopia
71, 17.359, 359.042

Trichromacy



Original Color
71, 15.722, 20.790

Protanomaly
71, 6.754, 33.826

Deuteranomaly
71, 12.261, 28.012

Tritanomaly
71, 15.921, 7.107

Monochromacy



Original Color
71, 15.722, 20.790

Achromatopsia
72, 0.009, 296.813

Achromatomaly
72, 5.338, 19.772

CSS Examples

Text

The CSS property to change the color of the text to CIELCh 71, 15.319, 20.752 is called "color". The color property can be set on classes, ids or directly on the HTML element.

This example shows how text in the color `rgb(204, 164, 164)` looks like.

```
.text, #text, p{  
    color:rgb(204, 164, 164)  
}
```

If you want to add a text shadow in that color use the text-shadow property, you can generate a text shadow directly with our [CSS Text Shadow Generator](#).

Here you see how black text with a 4 pixel rgb(204, 164, 164) colored shadow looks like.

```
.shadow{ text-shadow: 4px 4px 2px rgb(204, 164, 164) }
```

Border

The CSS property to change the border of an element to CIELCh 71, 15.319, 20.752 is called "border". The border property can be set on classes, ids or directly on the HTML element.

This example shows the color as border, it can be applied via the CSS property "border" or "border-color".

```
.border, #border, table{ border:4px solid rgb(204, 164, 164) }
```

If only the border color should be changed use the property `border-color`.

```
.border{ border-color:rgb(204, 164, 164) }
```

If you want to add a box shadow in that color use:

Here you see how a box with a 4 pixel `rgb(204, 164, 164)` colored shadow looks like.

```
.boxshadow{ -moz-box-shadow:4px 4px 4px  
4px rgb(204, 164, 164); -webkit-box-  
shadow:4px 4px 4px 4px rgb(204, 164, 164);  
box-shadow:4px 4px 4px 4px rgb(204, 164,  
164) }
```

Background

The CSS property to change the background color of an element to CIELCh 71, 15.319, 20.752 is called "background". The background property can be set on classes, ids or directly on the HTML element.

```
.background, #background, body{  
background: rgb(204, 164, 164) }
```

If only the background color should be changed can be used:

```
.background{ background-color: rgb(204,  
164, 164) }
```

This example shows the color as background, it is applied via the CSS property "background".

To optimize and compress your CSS code, you can use our [online CSS compressor and optimizer](#) based on csstidy. If you want to create a linear or radial gradient as background or border, check our [CSS Gradient Generator](#).

Hey! You found this booklet interesting? Support Converting Colors with the new Membership Option!

The pro membership hides all ads, plus gives you double the colors in the color bucket, and more awesome pro features!

[Learn more, Memberships starting at \\$2.50/m!](#)

**Follow me
on Twitter!**

@ConvertingColor