

Converting Colors

CIELCh(71, 16.148, 80.278)

Have a look what the booklet for
CIELCh(71, 16.148, 80.278) contains.

CIELCh(71, 16.129, 80.294)	3
<i>Conversions</i>	4
<i>Details</i>	6
<i>Harmonies</i>	11
<i>Previews</i>	20
<i>Color Blindness Simulation</i>	23
<i>CSS Examples</i>	26

Color

CIELCh(71, 16.129, 80.294)

Conversions

Conversions Part 1

Format	Color
Hex	BEAB91
RGB	190, 171, 145
RGB Percent	75%, 67%, 57%
CMY	0.2544, 0.3289, 0.4309
CMYK	0.00, 0.10, 0.24, 0.25
HSL	35°, 26%, 66%
HSV	35°, 24%, 75%
XYZ	40.9766, 42.1875, 32.8227
YIQ	173.7170, 19.6700, -4.0580

Conversions

Conversions Part 2

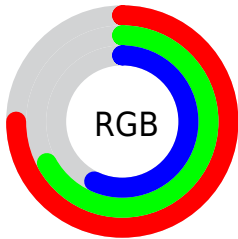
Format	Color
RYB	178, 190, 145
Decimal	12495761
CIELab	71.00, 2.72, 15.90
CIELCh	71, 16.129, 80.294
Yxy	42.1875, 0.3533, 0.3637
Android (android.graphics.Color)	4290685841 (0xFFBEAB91)
YUV	173.7170, -14.1575, 14.2802
Hunter-Lab	64.9519, -1.0545, 15.5048

Details

The CIELCh color **71, 16.129, 80.294** is a light color, and the websafe version is hex **CCCC99**. A complement of this color would be **67, 15.596, 266.903**, and the grayscale version is **71, 0.009, 296.813**.

A 20% lighter version of the original color is **91, 16.081, 79.340**, and **51, 16.383, 81.075** is the 20% darker color. If you saturate the color by 10%, you get **69, 23.332, 78.968**, and if you desaturate by 10%, it is **74, 9.157, 81.595**.

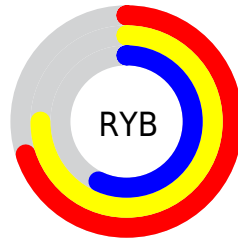
Distribution



Red (75%)

Green (67%)

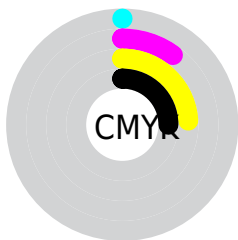
Blue (57%)



Red (70%)

Yellow (75%)

Blue (57%)

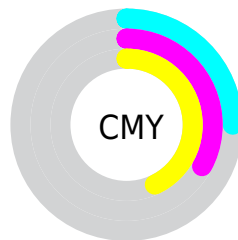


Cyan (0%)

Magenta (10%)

Yellow (24%)

Black (25%)



Cyan (25%)

Magenta (33%)

Yellow (43%)


Brightness & Saturation Gradients

These gradients show how the CIELCh color 71, 16.129, 80.294 changes by changing the brightness by 10 percent. The first figure shows a shift by +10% for each color and the second figure -10%.

Similar to the brightness gradients but the following saturation gradients show a change of the CIELCh color 71, 16.129, 80.294 by changing the saturation by 10% instead.

 71, 16.129, 80.294

 71, 16.129, 80.294

 100, 16.129,
80.294

 61, 16.129, 80.294

 91, 16.129, 80.294

 51, 16.129, 80.294

 41, 16.129, 80.294

 31, 16.129, 80.294

 21, 16.129, 80.294

 11, 16.129, 80.294

 1, 16.129, 80.294

 0, 16.129, 80.294

 71, 16.129, 80.294

 71, 16.129, 80.294

69, 23.332, 78.968

74, 9.157, 81.595

66, 30.743, 77.599

76, 2.413, 82.775

64, 38.300, 76.190

79, 4.116, 264.198

62, 45.857, 74.718

81, 10.447,
265.338

59, 53.120, 73.121

84, 16.599,
266.462

57, 59.556, 71.272

55, 64.361, 68.940

87, 20.648,
264.633

54, 66.692, 67.286

89, 18.451,
250.680

91, 17.544,
234.384

93, 18.082,
217.914

Harmonies

Complementary

The Complementary color scheme is a pair of colors which are on the opposite of each other on the color wheel.



71, 16.129, 80.294



67, 15.596, 266.903

Rectangle

The Rectangle color scheme consists of four colors that form a rectangle on the color wheel.



71, 16.129, 80.294



71, 16.129, 130.294



71, 16.129, 260.294



71, 16.129, 310.294

Sweetspot

The Sweet Spot groups the original color and five complimentary colors.



71, 16.130, 80.302



95, 5.739, 82.402



65, 20.396, 349.651



51, 3.764, 82.330



99, 0.012, 296.813



52, 0.007, 296.813

Same Dimension

The Same Dimension uses a secret algorithm to generate beautiful new colors.



71, 16.130, 80.302



89, 23.817, 79.669



76, 24.001, 110.770



39, 3.744, 82.134



45, 58.108, 67.815



6, 10.349, 68.689

Inverse Universe

The Inverse Universe completely reimagines the original color for something new.



67, 15.596, 266.903



82, 22.853, 267.792



62, 25.353, 295.214



38, 3.705, 264.639



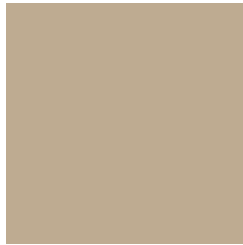
31, 57.990, 290.284



3, 12.459, 274.021

Previews

White Background



This preview shows how the CIELCh color 71, 16.129, 80.294 looks on a white background.

Color Contrast Check

Large Text (above 18pt) WCAG AA × Fail

Any Text WCAG AA × Fail

Large Text (above 18pt) WCAG AAA × Fail

Any Text WCAG AAA × Fail

Black Background



This preview shows how the CIELCh color 71, 16.129, 80.294 looks on a black background.

Color Contrast Check

Large Text (above 18pt) WCAG AA ✓ Pass

Any Text WCAG AA ✓ Pass

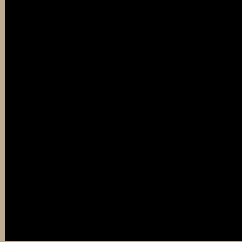
Large Text (above 18pt) WCAG AAA ✓ Pass

Any Text WCAG AAA ✓ Pass

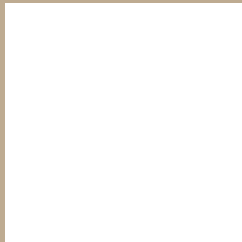
If you want to check with other color combinations, try the [Color Contrast Checker](#).

CIELCh 71, 16.129, 80.294

Background



This preview shows how black text looks on a background with the CIELCh color 71, 16.129, 80.294.



This preview shows how white text looks on a background with the CIELCh color 71, 16.129, 80.294.

Color Blindness Simulation

Color vision deficiency is a very complex topic, and I could not describe the different causes any better than Wikipedia does, so if you want to learn more, you should check out their [article about color blindness](#).

Dichromacy



Original Color

71, 16.129, 80.294

Protanopia

71, 15.204, 93.398

Deuteranopia

71, 17.759, 59.925



Tritanopia
71, 12.752, 346.861

Trichromacy



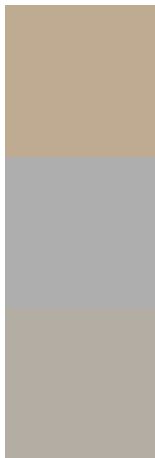
Original Color
71, 16.129, 80.294

Protanomaly
71, 15.226, 87.037

Deuteranomaly
71, 16.718, 67.988

Tritanomaly
71, 9.708, 23.398

Monochromacy



Original Color
71, 16.129, 80.294

Achromatopsia
71, 0.009, 296.813

Achromatomaly
71, 5.574, 80.711

CSS Examples

Text

The CSS property to change the color of the text to CIELCh 71, 16.129, 80.294 is called "color". The color property can be set on classes, ids or directly on the HTML element.

This example shows how text in the color `rgb(190, 171, 145)` looks like.

```
.text, #text, p{  
    color:rgb(190, 171, 145)  
}
```

If you want to add a text shadow in that color use the text-shadow property, you can generate a text shadow directly with our [CSS Text Shadow Generator](#).

Here you see how black text with a 4 pixel rgb(190, 171, 145) colored shadow looks like.

```
.shadow{ text-shadow: 4px 4px 2px rgb(190, 171, 145) }
```

Border

The CSS property to change the border of an element to CIELCh 71, 16.129, 80.294 is called "border". The border property can be set on classes, ids or directly on the HTML element.

This example shows the color as border, it can be applied via the CSS property "border" or "border-color".

```
.border, #border, table{ border:4px solid rgb(190, 171, 145) }
```

If only the border color should be changed use the property `border-color`.

```
.border{ border-color:rgb(190, 171, 145) }
```

If you want to add a box shadow in that color use:

Here you see how a box with a 4 pixel `rgb(190, 171, 145)` colored shadow looks like.

```
.boxshadow{ -moz-box-shadow:4px 4px 4px  
4px rgb(190, 171, 145); -webkit-box-  
shadow:4px 4px 4px 4px rgb(190, 171, 145);  
box-shadow:4px 4px 4px 4px rgb(190, 171,  
145) }
```

Background

The CSS property to change the background color of an element to CIELCh 71, 16.129, 80.294 is called "background". The background property can be set on classes, ids or directly on the HTML element.

```
.background, #background, body{  
background: rgb(190, 171, 145) }
```

If only the background color should be changed can be used:

```
.background{ background-color: rgb(190,  
171, 145) }
```

This example shows the color as background, it is applied via the CSS property "background".

To optimize and compress your CSS code, you can use our [online CSS compressor and optimizer](#) based on csstidy. If you want to create a linear or radial gradient as background or border, check our [CSS Gradient Generator](#).

Hey! You found this booklet interesting? Support Converting Colors with the new Membership Option!

The pro membership hides all ads, plus gives you double the colors in the color bucket, and more awesome pro features!

[Learn more, Memberships starting at \\$2.50/m!](#)

**Follow me
on Twitter!**

@ConvertingColor