

Converting Colors

CIELCh(71, 16.383, 74.683)

Have a look what the booklet for
CIELCh(71, 16.383, 74.683) contains.

CIELCh(71, 16.553, 74.513)	3
<i>Conversions</i>	4
<i>Details</i>	6
<i>Harmonies</i>	11
<i>Previews</i>	20
<i>Color Blindness Simulation</i>	23
<i>CSS Examples</i>	26

Color

CIELCh(71, 16.553, 74.513)

Conversions

Conversions Part 1

Format	Color
Hex	C1AA91
RGB	193, 170, 145
RGB Percent	76%, 67%, 57%
CMY	0.2427, 0.3329, 0.4310
CMYK	0.00, 0.12, 0.25, 0.24
HSL	31°, 28%, 66%
HSV	31°, 25%, 76%
XYZ	41.5326, 42.1875, 32.7832
YIQ	174.0270, 21.7330, -2.8990

Conversions

Conversions Part 2

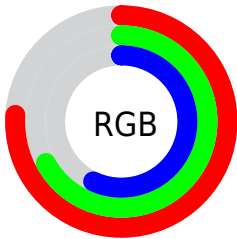
Format	Color
RYB	189, 193, 145
Decimal	12692113
CIELab	71.00, 4.42, 15.95
CIELCh	71, 16.553, 74.513
Yxy	42.1875, 0.3565, 0.3621
Android (android.graphics.Color)	4290882193 (0xFFC1AA91)
YUV	174.0270, -14.3103, 16.6393
Hunter-Lab	64.9519, 0.4735, 15.5409

Details

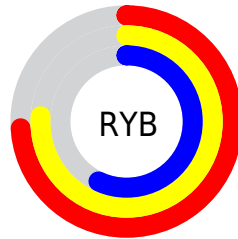
The CIELCh color $71, 16.553, 74.513$ is a light color, and the websafe version is hex `CC9999`. A complement of this color would be $68, 15.620, 261.390$, and the grayscale version is $71, 0.009, 296.813$.

A 20% lighter version of the original color is $91, 16.491, 73.894$, and $51, 16.842, 74.919$ is the 20% darker color. If you saturate the color by 10%, you get $68, 23.723, 73.239$, and if you desaturate by 10%, it is $74, 9.682, 75.777$.

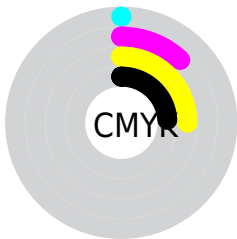
Distribution



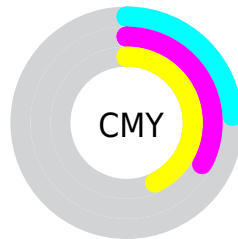
- Red (76%)
- Green (67%)
- Blue (57%)



- Red (74%)
- Yellow (76%)
- Blue (57%)



- Cyan (0%)
- Magenta (12%)
- Yellow (25%)
- Black (24%)



- Cyan (24%)
- Magenta (33%)
- Yellow (43%)

Brightness & Saturation Gradients

These gradients show how the CIELCh color 71, 16.553, 74.513 changes by changing the brightness by 10 percent. The first figure shows a shift by +10% for each color and the second figure -10%.

Similar to the brightness gradients but the following saturation gradients show a change of the CIELCh color 71, 16.553, 74.513 by changing the saturation by 10% instead.

■ 71, 16.553, 74.513

■ 71, 16.553, 74.513

■ 100, 16.553,
74.513

■ 61, 16.553, 74.513

■ 91, 16.553, 74.513

■ 51, 16.553, 74.513

■ 41, 16.553, 74.513

■ 31, 16.553, 74.513

■ 21, 16.553, 74.513

■ 11, 16.553, 74.513

■ 1, 16.553, 74.513

■ 0, 16.553, 74.513

■ 71, 16.553, 74.513

■ 71, 16.553, 74.513

68, 23.723, 73.239

74, 9.682, 75.777

66, 31.181, 71.936

77, 3.096, 76.946

63, 38.876, 70.606

80, 3.226, 258.376

60, 46.672, 69.222

83, 9.307, 259.483

58, 54.280, 67.710

86, 15.174,
260.604

56, 61.138, 65.910

88, 18.307,
256.229

54, 66.368, 63.532

52, 68.633, 62.217

91, 16.844,
237.244

93, 17.358,
217.415

96, 19.639,
200.663

Harmonies

Complementary

The Complementary color scheme is a pair of colors which are on the opposite of each other on the color wheel.



71, 16.553, 74.513



68, 15.620, 261.390

Rectangle

The Rectangle color scheme consists of four colors that form a rectangle on the color wheel.



71, 16.553, 74.513



71, 16.553, 124.513



71, 16.553, 254.513



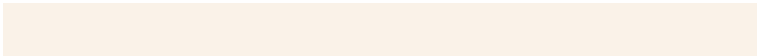
71, 16.553, 304.513

Sweetspot

The Sweet Spot groups the original color and five complimentary colors.



71, 16.553, 74.522



96, 5.528, 76.704



65, 22.364, 346.820



51, 3.596, 76.635



99, 0.012, 296.813



52, 0.007, 296.813

Same Dimension

The Same Dimension uses a secret algorithm to generate beautiful new colors.



71, 16.553, 74.522



88, 24.932, 73.805



77, 25.473, 108.511



39, 3.660, 76.442



44, 59.745, 62.770



7, 11.530, 60.645

Inverse Universe

The Inverse Universe completely reimagines the original color for something new.



68, 15.620, 261.390



83, 23.181, 262.463



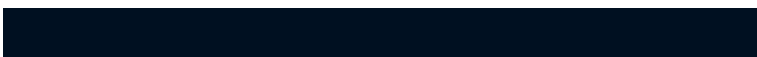
62, 27.003, 293.651



39, 3.593, 258.932



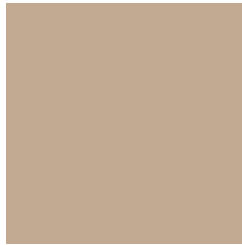
34, 52.720, 285.551



4, 13.110, 271.090

Previews

White Background



This preview shows how the CIELCh color 71, 16.553, 74.513 looks on a white background.

Color Contrast Check

Large Text (above 18pt) WCAG AA × Fail

Any Text WCAG AA × Fail

Large Text (above 18pt) WCAG AAA × Fail

Any Text WCAG AAA × Fail

Black Background



This preview shows how the CIELCh color 71, 16.553, 74.513 looks on a black background.

Color Contrast Check

Large Text (above 18pt) WCAG AA ✓ Pass

Any Text WCAG AA ✓ Pass

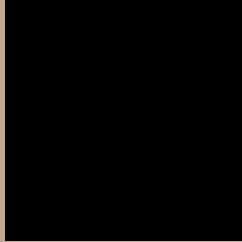
Large Text (above 18pt) WCAG AAA ✓ Pass

Any Text WCAG AAA ✓ Pass

If you want to check with other color combinations, try the [Color Contrast Checker](#).

CIELCh 71, 16.553, 74.513

Background



This preview shows how black text looks on a background with the CIELCh color 71, 16.553, 74.513.



This preview shows how white text looks on a background with the CIELCh color 71, 16.553, 74.513.

Color Blindness Simulation

Color vision deficiency is a very complex topic, and I could not describe the different causes any better than Wikipedia does, so if you want to learn more, you should check out their [article about color blindness](#).

Dichromacy



Original Color

71, 16.553, 74.513

Protanopia

71, 14.679, 92.924

Deuteranopia

71, 18.082, 59.095



Tritanopia
71, 14.062, 350.522

Trichromacy



Original Color
71, 16.553, 74.513

Protanomaly
71, 15.384, 85.634

Deuteranomaly
71, 17.193, 63.831

Tritanomaly
71, 11.308, 23.095

Monochromacy



Original Color
71, 16.553, 74.513

Achromatopsia
71, 0.009, 296.813

Achromatomaly
71, 6.242, 79.900

CSS Examples

Text

The CSS property to change the color of the text to CIELCh 71, 16.553, 74.513 is called "color". The color property can be set on classes, ids or directly on the HTML element.

This example shows how text in the color `rgb(193, 170, 145)` looks like.

```
.text, #text, p{  
    color:rgb(193, 170, 145)  
}
```

If you want to add a text shadow in that color use the text-shadow property, you can generate a text shadow directly with our [CSS Text Shadow Generator](#).

Here you see how black text with a 4 pixel rgb(193, 170, 145) colored shadow looks like.

```
.shadow{ text-shadow: 4px 4px 2px rgb(193, 170, 145) }
```

Border

The CSS property to change the border of an element to CIELCh 71, 16.553, 74.513 is called "border". The border property can be set on classes, ids or directly on the HTML element.

This example shows the color as border, it can be applied via the CSS property "border" or "border-color".

```
.border, #border, table{ border:4px solid rgb(193, 170, 145) }
```

If only the border color should be changed use the property `border-color`.

```
.border{ border-color:rgb(193, 170, 145) }
```

If you want to add a box shadow in that color use:

Here you see how a box with a 4 pixel `rgb(193, 170, 145)` colored shadow looks like.

```
.boxshadow{ -moz-box-shadow:4px 4px 4px  
4px rgb(193, 170, 145); -webkit-box-  
shadow:4px 4px 4px 4px rgb(193, 170, 145);  
box-shadow:4px 4px 4px 4px rgb(193, 170,  
145) }
```

Background

The CSS property to change the background color of an element to CIELCh 71, 16.553, 74.513 is called "background". The background property can be set on classes, ids or directly on the HTML element.

```
.background, #background, body{  
background: rgb(193, 170, 145) }
```

If only the background color should be changed can be used:

```
.background{ background-color: rgb(193,  
170, 145) }
```

This example shows the color as background, it is applied via the CSS property "background".

To optimize and compress your CSS code, you can use our [online CSS compressor and optimizer](#) based on csstidy. If you want to create a linear or radial gradient as background or border, check our [CSS Gradient Generator](#).

Hey! You found this booklet interesting? Support Converting Colors with the new Membership Option!

The pro membership hides all ads, plus gives you double the colors in the color bucket, and more awesome pro features!

[Learn more, Memberships starting at \\$2.50/m!](#)

**Follow me
on Twitter!**

@ConvertingColor