

Converting Colors

CIELCh(71, 16.826, 37.491)

Have a look what the booklet for
CIELCh(71, 16.826, 37.491) contains.

CIELCh(71, 16.802, 37.489)	3
<i>Conversions</i>	4
<i>Details</i>	6
<i>Harmonies</i>	11
<i>Previews</i>	20
<i>Color Blindness Simulation</i>	23
<i>CSS Examples</i>	26

Color

CIELCh(71, 16.802, 37.489)

Conversions

Conversions Part 1

Format	Color
Hex	CDA59C
RGB	205, 165, 156
RGB Percent	80%, 65%, 61%
CMY	0.1969, 0.3537, 0.3890
CMYK	0.00, 0.20, 0.24, 0.20
HSL	11°, 33%, 71%
HSV	11°, 24%, 80%
XYZ	44.5284, 42.1875, 37.1664
YIQ	175.9340, 26.7290, 5.6810

Conversions

Conversions Part 2

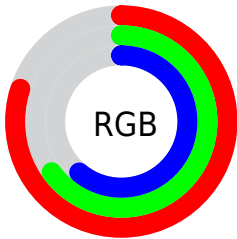
Format	Color
R _Y B	205, 167, 156
Decimal	13477276
CIE Lab	71.00, 13.33, 10.23
CIE LCh	71, 16.802, 37.489
Yxy	42.1875, 0.3594, 0.3405
Android (android.graphics.Color)	4291667356 (0xFFCDA59C)
YUV	175.9340, -9.8275, 25.4909
Hunter-Lab	64.9519, 8.7067, 11.5397

Details

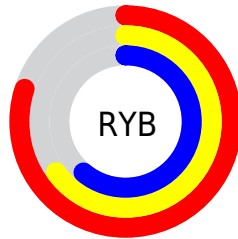
The CIELCh color **71, 16.802, 37.489** is a light color, and the websafe version is hex **CC9999**. A complement of this color would be **77, 14.287, 218.392**, and the grayscale version is **72, 0.009, 296.813**.

A 20% lighter version of the original color is **90, 14.128, 41.581**, and **51, 16.788, 37.001** is the 20% darker color. If you saturate the color by 10%, you get **66, 24.843, 37.706**, and if you desaturate by 10%, it is **76, 9.378, 37.427**.

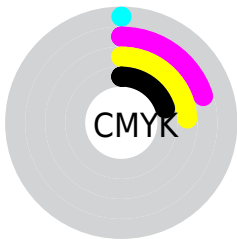
Distribution



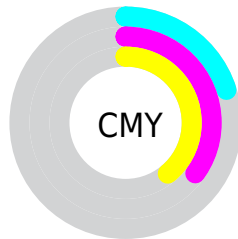
- Red (80%)
- Green (65%)
- Blue (61%)



- Red (80%)
- Yellow (65%)
- Blue (61%)



- Cyan (0%)
- Magenta (20%)
- Yellow (24%)
- Black (20%)



- Cyan (20%)
- Magenta (35%)
- Yellow (39%)

Brightness & Saturation Gradients

These gradients show how the CIELCh color 71, 16.802, 37.489 changes by changing the brightness by 10 percent. The first figure shows a shift by +10% for each color and the second figure -10%.

Similar to the brightness gradients but the following saturation gradients show a change of the CIELCh color 71, 16.802, 37.489 by changing the saturation by 10% instead.

71, 16.802, 37.489

71, 16.802, 37.489

100, 16.802,
37.489

61, 16.802, 37.489

91, 16.802, 37.489

51, 16.802, 37.489

41, 16.802, 37.489

31, 16.802, 37.489

21, 16.802, 37.489

11, 16.802, 37.489

1, 16.802, 37.489

0, 16.802, 37.489

71, 16.802, 37.489

71, 16.802, 37.489

66, 24.843, 37.706

76, 9.378, 37.427

62, 33.519, 38.104

80, 2.533, 37.340

58, 42.803, 38.735

85, 3.784, 217.868

54, 52.592, 39.621

90, 9.629, 218.005

51, 62.646, 40.734

95, 14.726,
211.940

48, 72.430, 41.895

97, 16.624,
198.402

46, 80.768, 42.595

45, 84.869, 42.865

Harmonies

Complementary

The Complementary color scheme is a pair of colors which are on the opposite of each other on the color wheel.



71, 16.802, 37.489



77, 14.287, 218.392

Rectangle

The Rectangle color scheme consists of four colors that form a rectangle on the color wheel.



71, 16.802, 37.489



71, 16.802, 87.489



71, 16.802, 217.489



71, 16.802, 267.489

Sweetspot

The Sweet Spot groups the original color and five complimentary colors.



71, 16.801, 37.497



96, 5.478, 37.405



70, 28.241, 331.439



51, 3.569, 37.410



0, 0.000, 0.000



53, 0.007, 296.813

Same Dimension

The Same Dimension uses a secret algorithm to generate beautiful new colors.



71, 16.801, 37.497



84, 24.898, 37.591



77, 18.923, 89.414



40, 3.739, 37.417



36, 72.151, 43.195



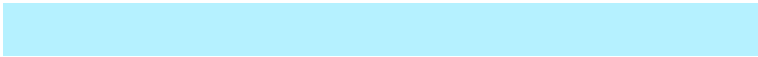
5, 16.148, 29.546

Inverse Universe

The Inverse Universe completely reimagines the original color for something new.



77, 14.287, 218.392



92, 20.299, 218.690



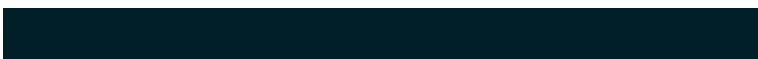
70, 18.911, 275.912



42, 3.525, 217.898



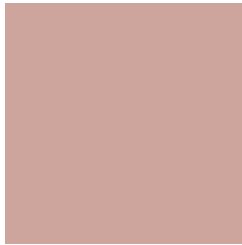
52, 31.615, 231.692



10, 11.766, 223.510

Previews

White Background



This preview shows how the CIELCh color 71, 16.802, 37.489 looks on a white background.

Color Contrast Check

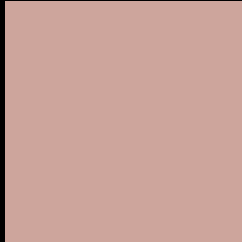
Large Text (above 18pt) WCAG AA × Fail

Any Text WCAG AA × Fail

Large Text (above 18pt) WCAG AAA × Fail

Any Text WCAG AAA × Fail

Black Background



This preview shows how the CIELCh color 71, 16.802, 37.489 looks on a black background.

Color Contrast Check

Large Text (above 18pt) WCAG AA ✓ Pass

Any Text WCAG AA ✓ Pass

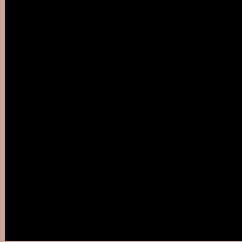
Large Text (above 18pt) WCAG AAA ✓ Pass

Any Text WCAG AAA ✓ Pass

If you want to check with other color combinations, try the [Color Contrast Checker](#).

CIELCh 71, 16.802, 37.489

Background



This preview shows how black text looks on a background with the CIELCh color 71, 16.802, 37.489.



This preview shows how white text looks on a background with the CIELCh color 71, 16.802, 37.489.

Color Blindness Simulation

Color vision deficiency is a very complex topic, and I could not describe the different causes any better than Wikipedia does, so if you want to learn more, you should check out their [article about color blindness](#).

Dichromacy



Original Color

71, 16.802, 37.489

Protanopia

71, 7.564, 88.364

Deuteranopia

71, 13.966, 50.456



Tritanopia
71, 18.633, 358.971

Trichromacy



Original Color
71, 16.802, 37.489

Protanomaly
71, 9.946, 60.705

Deuteranomaly
71, 14.783, 46.392

Tritanomaly
71, 16.965, 11.797

Monochromacy



Original Color
71, 16.802, 37.489

Achromatopsia
72, 0.009, 296.813

Achromatomaly
71, 5.607, 36.621

CSS Examples

Text

The CSS property to change the color of the text to CIELCh 71, 16.802, 37.489 is called "color". The color property can be set on classes, ids or directly on the HTML element.

This example shows how text in the color `rgb(205, 165, 156)` looks like.

```
.text, #text, p{  
    color:rgb(205, 165, 156)  
}
```

If you want to add a text shadow in that color use the text-shadow property, you can generate a text shadow directly with our [CSS Text Shadow Generator](#).

Here you see how black text with a 4 pixel rgb(205, 165, 156) colored shadow looks like.

```
.shadow{ text-shadow: 4px 4px 2px rgb(205, 165, 156) }
```

Border

The CSS property to change the border of an element to CIELCh 71, 16.802, 37.489 is called "border". The border property can be set on classes, ids or directly on the HTML element.

This example shows the color as border, it can be applied via the CSS property "border" or "border-color".

```
.border, #border, table{ border:4px solid rgb(205, 165, 156) }
```

If only the border color should be changed use the property `border-color`.

```
.border{ border-color:rgb(205, 165, 156) }
```

If you want to add a box shadow in that color use:

Here you see how a box with a 4 pixel `rgb(205, 165, 156)` colored shadow looks like.

```
.boxshadow{ -moz-box-shadow:4px 4px 4px 4px rgb(205, 165, 156); -webkit-box-shadow:4px 4px 4px 4px rgb(205, 165, 156); box-shadow:4px 4px 4px 4px rgb(205, 165, 156) }
```

Background

The CSS property to change the background color of an element to CIELCh 71, 16.802, 37.489 is called "background". The background property can be set on classes, ids or directly on the HTML element.

```
.background, #background, body{  
background: rgb(205, 165, 156) }
```

If only the background color should be changed can be used:

```
.background{ background-color: rgb(205,  
165, 156) }
```

This example shows the color as background, it is applied via the CSS property "background".

To optimize and compress your CSS code, you can use our [online CSS compressor and optimizer](#) based on csstidy. If you want to create a linear or radial gradient as background or border, check our [CSS Gradient Generator](#).

Hey! You found this booklet interesting? Support Converting Colors with the new Membership Option!

The pro membership hides all ads, plus gives you double the colors in the color bucket, and more awesome pro features!

[Learn more, Memberships starting at \\$2.50/m!](#)

**Follow me
on Twitter!**

@ConvertingColor