

Converting Colors

CIELCh(71, 16.989, 21.449)

Have a look what the booklet for
CIELCh(71, 16.989, 21.449) contains.

CIELCh(71, 16.954, 20.912)	3
<i>Conversions</i>	4
<i>Details</i>	6
<i>Harmonies</i>	11
<i>Previews</i>	20
<i>Color Blindness Simulation</i>	23
<i>CSS Examples</i>	26

Color

CIELCh(71, 16.954, 20.912)

Conversions

Conversions Part 1

Format	Color
Hex	CEA3A3
RGB	206, 163, 163
RGB Percent	81%, 64%, 64%
CMY	0.1904, 0.3591, 0.3591
CMYK	0.00, 0.21, 0.21, 0.19
HSL	0°, 31%, 73%
HSV	0°, 21%, 81%
XYZ	45.3959, 42.1875, 40.5968
YIQ	175.8570, 25.6280, 9.1160

Conversions

Conversions Part 2

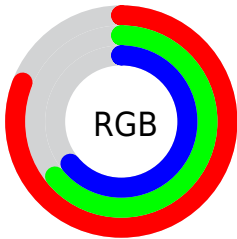
Format	Color
R _{YB}	206, 163, 163
Decimal	13542307
CIE Lab	71.00, 15.84, 6.05
CIE LCh	71, 16.954, 20.912
Yxy	42.1875, 0.3542, 0.3291
Android (android.graphics.Color)	4291732387 (0xFFCEA3A3)
YUV	175.8570, -6.3385, 26.4354
Hunter-Lab	64.9519, 11.0905, 8.4084

Details

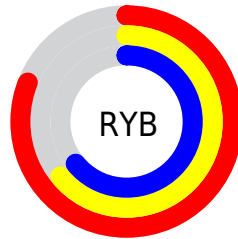
The CIELCh color $71, 16.954, 20.912$ is a light color, and the websafe version is hex `CC9999`. A complement of this color would be $80, 14.780, 198.369$, and the grayscale version is $72, 0.009, 296.813$.

A 20% lighter version of the original color is $90, 13.679, 20.354$, and $51, 17.030, 21.428$ is the 20% darker color. If you saturate the color by 10%, you get $66, 26.056, 22.016$, and if you desaturate by 10%, it is $77, 8.479, 20.051$.

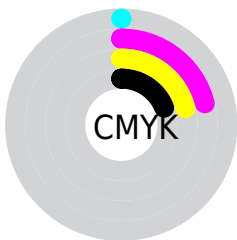
Distribution



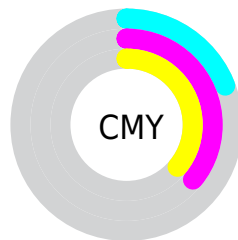
- Red (81%)
- Green (64%)
- Blue (64%)



- Red (81%)
- Yellow (64%)
- Blue (64%)



- Cyan (0%)
- Magenta (21%)
- Yellow (21%)
- Black (19%)



- Cyan (19%)
- Magenta (36%)
- Yellow (36%)

Brightness & Saturation Gradients

These gradients show how the CIELCh color 71, 16.954, 20.912 changes by changing the brightness by 10 percent. The first figure shows a shift by +10% for each color and the second figure -10%.

Similar to the brightness gradients but the following saturation gradients show a change of the CIELCh color 71, 16.954, 20.912 by changing the saturation by 10% instead.

71, 16.954, 20.912

71, 16.954, 20.912

100, 16.954,
20.912

61, 16.954, 20.912

91, 16.954, 20.912

51, 16.954, 20.912

41, 16.954, 20.912

31, 16.954, 20.912

21, 16.954, 20.912

11, 16.954, 20.912

1, 16.954, 20.912

0, 16.954, 20.912

71, 16.954, 20.912

71, 16.954, 20.912

66, 26.056, 22.016

77, 8.479, 20.051

60, 35.737, 23.443

82, 0.633, 18.577

56, 45.860, 25.305

88, 6.621, 199.048

51, 56.190, 27.711

94, 13.337,
198.603

48, 66.390, 30.723

97, 16.114,
198.435

45, 75.979, 34.224

44, 84.024, 37.641

43, 89.178, 40.001

Harmonies

Complementary

The Complementary color scheme is a pair of colors which are on the opposite of each other on the color wheel.



71, 16.954, 20.912



80, 14.780, 198.369

Rectangle

The Rectangle color scheme consists of four colors that form a rectangle on the color wheel.



71, 16.954, 20.912



71, 16.954, 70.912



71, 16.954, 200.912



71, 16.954, 250.912

Sweetspot

The Sweet Spot groups the original color and five complimentary colors.



71, 16.952, 20.919



96, 5.467, 19.668



72, 28.078, 325.570



51, 3.636, 19.723



0, 0.000, 0.000



53, 0.007, 296.813

Same Dimension

The Same Dimension uses a secret algorithm to generate beautiful new colors.



71, 16.952, 20.919



83, 24.557, 21.375



76, 14.349, 72.837



40, 4.369, 19.936



34, 75.552, 39.825



4, 17.909, 19.412

Inverse Universe

The Inverse Universe completely reimagines the original color for something new.



80, 14.780, 198.369



96, 20.728, 198.154



74, 13.580, 258.436



42, 4.118, 198.989



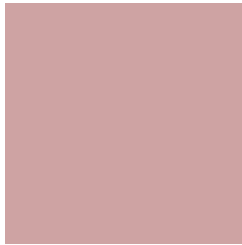
62, 36.294, 196.407



13, 13.512, 196.403

Previews

White Background



This preview shows how the CIELCh color 71, 16.954, 20.912 looks on a white background.

Color Contrast Check

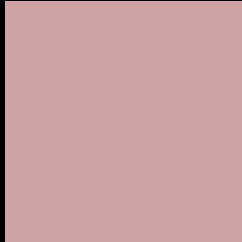
Large Text (above 18pt) WCAG AA × Fail

Any Text WCAG AA × Fail

Large Text (above 18pt) WCAG AAA × Fail

Any Text WCAG AAA × Fail

Black Background



This preview shows how the CIELCh color 71, 16.954, 20.912 looks on a black background.

Color Contrast Check

Large Text (above 18pt) WCAG AA ✓ Pass

Any Text WCAG AA ✓ Pass

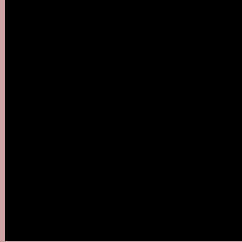
Large Text (above 18pt) WCAG AAA ✓ Pass

Any Text WCAG AAA ✓ Pass

If you want to check with other color combinations, try the [Color Contrast Checker](#).

CIELCh 71, 16.954, 20.912

Background



This preview shows how black text looks on a background with the CIELCh color 71, 16.954, 20.912.



This preview shows how white text looks on a background with the CIELCh color 71, 16.954, 20.912.

Color Blindness Simulation

Color vision deficiency is a very complex topic, and I could not describe the different causes any better than Wikipedia does, so if you want to learn more, you should check out their [article about color blindness](#).

Dichromacy



Original Color

71, 16.954, 20.912

Protanopia

71, 2.875, 68.481

Deuteranopia

71, 10.931, 34.572



Tritanopia
71, 18.837, 1.023

Trichromacy



Original Color
71, 16.954, 20.912

Protanomaly
71, 7.136, 33.097

Deuteranomaly
71, 13.074, 27.617

Tritanomaly
71, 17.482, 8.528

Monochromacy



Original Color
71, 16.954, 20.912

Achromatopsia
72, 0.009, 296.813

Achromatomaly
71, 6.119, 19.854

CSS Examples

Text

The CSS property to change the color of the text to CIELCh 71, 16.954, 20.912 is called "color". The color property can be set on classes, ids or directly on the HTML element.

This example shows how text in the color `rgb(206, 163, 163)` looks like.

```
.text, #text, p{  
    color:rgb(206, 163, 163)  
}
```

If you want to add a text shadow in that color use the text-shadow property, you can generate a text shadow directly with our [CSS Text Shadow Generator](#).

Here you see how black text with a 4 pixel rgb(206, 163, 163) colored shadow looks like.

```
.shadow{ text-shadow: 4px 4px 2px rgb(206, 163, 163) }
```

Border

The CSS property to change the border of an element to CIELCh 71, 16.954, 20.912 is called "border". The border property can be set on classes, ids or directly on the HTML element.

This example shows the color as border, it can be applied via the CSS property "border" or "border-color".

```
.border, #border, table{ border:4px solid rgb(206, 163, 163) }
```

If only the border color should be changed use the property `border-color`.

```
.border{ border-color:rgb(206, 163, 163) }
```

If you want to add a box shadow in that color use:

Here you see how a box with a 4 pixel `rgb(206, 163, 163)` colored shadow looks like.

```
.boxshadow{ -moz-box-shadow:4px 4px 4px  
4px rgb(206, 163, 163); -webkit-box-  
shadow:4px 4px 4px 4px rgb(206, 163, 163);  
box-shadow:4px 4px 4px 4px rgb(206, 163,  
163) }
```

Background

The CSS property to change the background color of an element to CIELCh 71, 16.954, 20.912 is called "background". The background property can be set on classes, ids or directly on the HTML element.

```
.background, #background, body{  
background: rgb(206, 163, 163) }
```

If only the background color should be changed can be used:

```
.background{ background-color: rgb(206,  
163, 163) }
```

This example shows the color as background, it is applied via the CSS property "background".

To optimize and compress your CSS code, you can use our [online CSS compressor and optimizer](#) based on csstidy. If you want to create a linear or radial gradient as background or border, check our [CSS Gradient Generator](#).

Hey! You found this booklet interesting? Support Converting Colors with the new Membership Option!

The pro membership hides all ads, plus gives you double the colors in the color bucket, and more awesome pro features!

[Learn more, Memberships starting at \\$2.50/m!](#)

**Follow me
on Twitter!**

@ConvertingColor