

# Converting Colors

CIELCh(71, 17.018, 47.387)

Have a look what the booklet for  
CIELCh(71, 17.018, 47.387) contains.

<b>CIELCh(71, 16.839, 47.170)</b> .....	3
<i><b>Conversions</b></i> .....	4
<i><b>Details</b></i> .....	6
<i><b>Harmonies</b></i> .....	11
<i><b>Previews</b></i> .....	20
<i><b>Color Blindness Simulation</b></i> .....	23
<i><b>CSS Examples</b></i> .....	26

# Color

**CIELCh(71, 16.839, 47.170)**

# Conversions

## Conversions Part 1

Format	Color
Hex	CBA698
RGB	203, 166, 152
RGB Percent	80%, 65%, 60%
CMY	0.2043, 0.3493, 0.4043
CMYK	0.00, 0.18, 0.25, 0.20
HSL	16°, 33%, 70%
HSV	16°, 25%, 80%
XYZ	43.8834, 42.1875, 35.4981
YIQ	175.4670, 26.5460, 3.4900

# Conversions

## Conversions Part 2

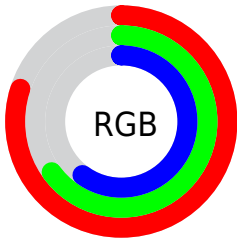
Format	Color
R <sub>Y</sub> B	203, 171, 152
Decimal	13346456
CIE Lab	71.00, 11.45, 12.35
CIE LCh	71, 16.839, 47.170
Yxy	42.1875, 0.3610, 0.3470
Android (android.graphics.Color)	4291536536 (0xFFCBA698)
YUV	175.4670, -11.5692, 24.1464
Hunter-Lab	64.9519, 6.9339, 13.0626

# Details

The CIELCh color  $71, 16.839, 47.170$  is a light color, and the websafe version is hex `CC9999`. A complement of this color would be  $74, 14.423, 230.453$ , and the grayscale version is  $72, 0.009, 296.813$ .

A 20% lighter version of the original color is  $91, 15.036, 51.015$ , and  $51, 16.832, 47.195$  is the 20% darker color. If you saturate the color by 10%, you get  $67, 24.499, 46.863$ , and if you desaturate by 10%, it is  $75, 9.746, 47.583$ .

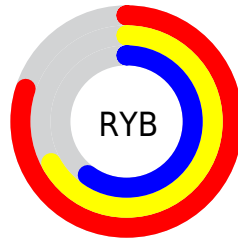
# Distribution



Red (80%)

Green (65%)

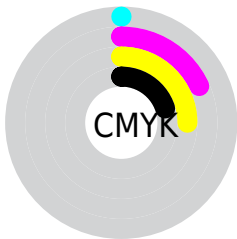
Blue (60%)



Red (80%)

Yellow (67%)

Blue (60%)

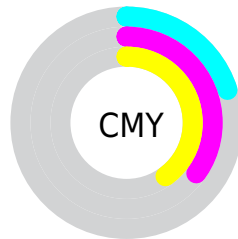


Cyan (0%)

Magenta (18%)

Yellow (25%)

Black (20%)



Cyan (20%)

Magenta (35%)

Yellow (40%)

# Brightness & Saturation Gradients

These gradients show how the CIELCh color 71, 16.839, 47.170 changes by changing the brightness by 10 percent. The first figure shows a shift by +10% for each color and the second figure -10%.

Similar to the brightness gradients but the following saturation gradients show a change of the CIELCh color 71, 16.839, 47.170 by changing the saturation by 10% instead.



71, 16.839, 47.170

71, 16.839, 47.170

100, 16.839,  
47.170

61, 16.839, 47.170

91, 16.839, 47.170

51, 16.839, 47.170

41, 16.839, 47.170

31, 16.839, 47.170

21, 16.839, 47.170

11, 16.839, 47.170

1, 16.839, 47.170

0, 16.839, 47.170

71, 16.839, 47.170

71, 16.839, 47.170

67, 24.499, 46.863

75, 9.746, 47.583

63, 32.752, 46.670

79, 3.179, 47.977

59, 41.585, 46.619

84, 2.914, 228.881

56, 50.909, 46.708

88, 8.583, 229.360

53, 60.486, 46.876

93, 13.879,  
229.957

50, 69.757, 46.920

96, 16.947,  
199.724

47, 77.552, 46.365

46, 80.851, 46.067

97, 17.210,  
198.364

# Harmonies

# Complementary

The Complementary color scheme is a pair of colors which are on the opposite of each other on the color wheel.



71, 16.839, 47.170



74, 14.423, 230.453

# Rectangle

The Rectangle color scheme consists of four colors that form a rectangle on the color wheel.



71, 16.839, 47.170



71, 16.839, 97.170



71, 16.839, 227.170



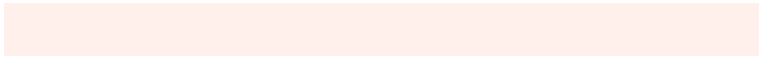
71, 16.839, 277.170

# Sweetspot

The Sweet Spot groups the original color and five complimentary colors.



71, 16.838, 47.179



96, 6.035, 47.882



69, 27.792, 334.684



50, 4.315, 47.820



0, 0.000, 0.000



53, 0.007, 296.813



# Same Dimension

The Same Dimension uses a secret algorithm to generate beautiful new colors.



71, 16.838, 47.179



85, 24.711, 46.999



77, 21.362, 95.332



41, 3.588, 47.830



38, 69.196, 46.521



6, 15.447, 35.451



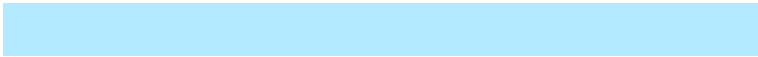


# Inverse Universe

The Inverse Universe completely reimagines the original color for something new.



74, 14.423, 230.453



90, 20.393, 231.057



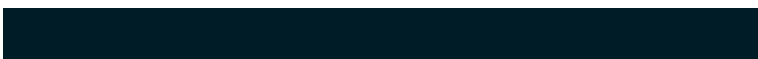
68, 21.816, 281.815



42, 3.404, 229.109



47, 34.064, 250.792



9, 11.909, 239.514



# Previews

## White Background



This preview shows how the CIELCh color 71, 16.839, 47.170 looks on a white background.

## Color Contrast Check

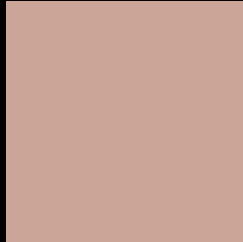
Large Text (above 18pt) WCAG AA × Fail

Any Text WCAG AA × Fail

Large Text (above 18pt) WCAG AAA × Fail

Any Text WCAG AAA × Fail

# Black Background



This preview shows how the CIELCh color 71, 16.839, 47.170 looks on a black background.

## Color Contrast Check

Large Text (above 18pt) WCAG AA ✓ Pass

Any Text WCAG AA ✓ Pass

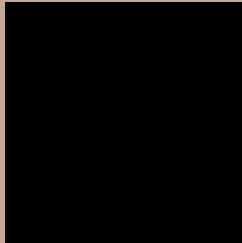
Large Text (above 18pt) WCAG AAA ✓ Pass

Any Text WCAG AAA ✓ Pass

If you want to check with other color combinations, try the [Color Contrast Checker](#).

# CIELCh 71, 16.839, 47.170

## Background



This preview shows how black text looks on a background with the CIELCh color 71, 16.839, 47.170.



This preview shows how white text looks on a background with the CIELCh color 71, 16.839, 47.170.

# Color Blindness Simulation

Color vision deficiency is a very complex topic, and I could not describe the different causes any better than Wikipedia does, so if you want to learn more, you should check out their [article about color blindness](#).

## Dichromacy



### Original Color

71, 16.839, 47.170

### Protanopia

71, 9.753, 90.459

### Deuteranopia

71, 15.277, 54.695



**Tritanopia**  
71, 18.273, 358.461



# Trichromacy



**Original Color**  
71, 16.839, 47.170

**Protanomaly**  
71, 11.127, 66.756

**Deuteranomaly**  
71, 15.666, 51.486

**Tritanomaly**  
71, 16.530, 13.396

# Monochromacy



**Original Color**  
71, 16.839, 47.170

**Achromatopsia**  
71, 0.009, 296.813

**Achromatomaly**  
71, 5.686, 48.196

# CSS Examples

## Text

The CSS property to change the color of the text to CIELCh 71, 16.839, 47.170 is called "color". The color property can be set on classes, ids or directly on the HTML element.

This example shows how text in the color `rgb(203, 166, 152)` looks like.

```
.text, #text, p{  
    color:rgb(203, 166, 152)  
}
```

If you want to add a text shadow in that color use the text-shadow property, you can generate a text shadow directly with our [CSS Text Shadow Generator](#).

Here you see how black text with a 4 pixel rgb(203, 166, 152) colored shadow looks like.

```
.shadow{ text-shadow: 4px 4px 2px rgb(203, 166, 152) }
```

## Border

The CSS property to change the border of an element to CIELCh 71, 16.839, 47.170 is called "border". The border property can be set on classes, ids or directly on the HTML element.

This example shows the color as border, it can be applied via the CSS property "border" or "border-color".

```
.border, #border, table{ border:4px solid rgb(203, 166, 152) }
```

If only the border color should be changed use the property `border-color`.

```
.border{ border-color:rgb(203, 166, 152) }
```

If you want to add a box shadow in that color use:

Here you see how a box with a 4 pixel `rgb(203, 166, 152)` colored shadow looks like.

```
.boxshadow{ -moz-box-shadow:4px 4px 4px  
4px rgb(203, 166, 152); -webkit-box-  
shadow:4px 4px 4px 4px rgb(203, 166, 152);  
box-shadow:4px 4px 4px 4px rgb(203, 166,  
152) }
```

# Background

The CSS property to change the background color of an element to CIELCh 71, 16.839, 47.170 is called "background". The background property can be set on classes, ids or directly on the HTML element.

```
.background, #background, body{  
background: rgb(203, 166, 152) }
```

If only the background color should be changed can be used:

```
.background{ background-color: rgb(203,  
166, 152) }
```

This example shows the color as background, it is applied via the CSS property "background".

To optimize and compress your CSS code, you can use our [online CSS compressor and optimizer](#) based on csstidy. If you want to create a linear or radial gradient as background or border, check our [CSS Gradient Generator](#).

Hey! You found this booklet interesting? Support Converting Colors with the new Membership Option!

The pro membership hides all ads, plus gives you double the colors in the color bucket, and more awesome pro features!

**[Learn more, Memberships starting at \\$2.50/m!](#)**

**Follow me  
on Twitter!**

@ConvertingColor