

Converting Colors

CIELCh(71, 18.154, 68.715)

Have a look what the booklet for
CIELCh(71, 18.154, 68.715) contains.

CIELCh(71, 18.290, 70.077)	3
<i>Conversions</i>	4
<i>Details</i>	6
<i>Harmonies</i>	11
<i>Previews</i>	20
<i>Color Blindness Simulation</i>	23
<i>CSS Examples</i>	26

Color

CIELCh(71, 18.290, 70.077)

Conversions

Conversions Part 1

Format	Color
Hex	C5A98F
RGB	197, 169, 143
RGB Percent	77%, 66%, 56%
CMY	0.2278, 0.3375, 0.4395
CMYK	0.00, 0.14, 0.27, 0.23
HSL	29°, 32%, 67%
HSV	29°, 27%, 77%
XYZ	42.1306, 42.1875, 31.8794
YIQ	174.4080, 25.0340, -2.1500

Conversions

Conversions Part 2

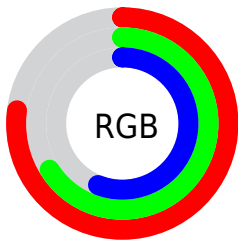
Format	Color
RYB	197, 193, 143
Decimal	12953999
CIELab	71.00, 6.23, 17.20
CIELCh	71, 18.290, 70.077
Yxy	42.1875, 0.3626, 0.3631
Android (android.graphics.Color)	4291144079 (0xFFC5A98F)
YUV	174.4080, -15.4841, 19.8132
Hunter-Lab	64.9519, 2.1170, 16.3659

Details

The CIELCh color **71, 18.290, 70.077** is a light color, and the websafe version is hex **CC9999**. A complement of this color would be **69, 16.828, 257.524**, and the grayscale version is **71, 0.009, 296.813**.

A 20% lighter version of the original color is **91, 18.124, 69.793**, and **51, 17.970, 70.193** is the 20% darker color. If you saturate the color by 10%, you get **68, 25.602, 68.874**, and if you desaturate by 10%, it is **74, 11.330, 71.285**.

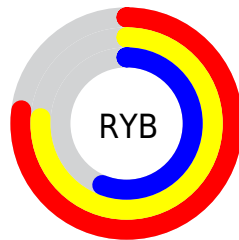
Distribution



Red (77%)

Green (66%)

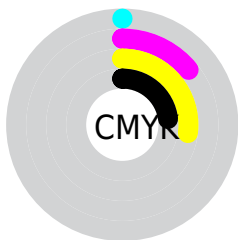
Blue (56%)



Red (77%)

Yellow (76%)

Blue (56%)

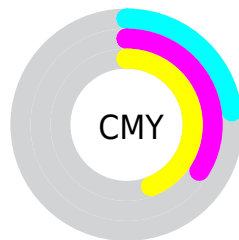


Cyan (0%)

Magenta (14%)

Yellow (27%)

Black (23%)



Cyan (23%)

Magenta (34%)

Yellow (44%)

Brightness & Saturation Gradients

These gradients show how the CIELCh color 71, 18.290, 70.077 changes by changing the brightness by 10 percent. The first figure shows a shift by +10% for each color and the second figure -10%.

Similar to the brightness gradients but the following saturation gradients show a change of the CIELCh color 71, 18.290, 70.077 by changing the saturation by 10% instead.

■ 71, 18.290, 70.077

■ 71, 18.290, 70.077

■ 100, 18.290,
70.077

■ 61, 18.290, 70.077

■ 91, 18.290, 70.077

■ 51, 18.290, 70.077

■ 41, 18.290, 70.077

■ 31, 18.290, 70.077

■ 21, 18.290, 70.077

■ 11, 18.290, 70.077

■ 1, 18.290, 70.077

■ 0, 18.290, 70.077

■ 71, 18.290, 70.077

■ 71, 18.290, 70.077

68, 25.602, 68.874

74, 11.330, 71.285

65, 33.257, 67.658

77, 4.706, 72.439

62, 41.201, 66.429

80, 1.609, 253.935

60, 49.281, 65.148

83, 7.646, 254.903

57, 57.161, 63.722

87, 13.434,
256.003

55, 64.190, 61.942

90, 16.590,
250.297

52, 69.493, 59.518

52, 70.798, 58.919

92, 15.884,
227.157

95, 17.662,
205.748

96, 19.036,
198.248

Harmonies

Complementary

The Complementary color scheme is a pair of colors which are on the opposite of each other on the color wheel.



71, 18.290, 70.077



69, 16.828, 257.524

Rectangle

The Rectangle color scheme consists of four colors that form a rectangle on the color wheel.



71, 18.290, 70.077



71, 18.290, 120.077



71, 18.290, 250.077



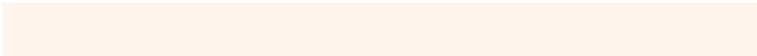
71, 18.290, 300.077

Sweetspot

The Sweet Spot groups the original color and five complimentary colors.



71, 18.290, 70.085



97, 6.271, 72.362



65, 25.886, 344.298



51, 4.474, 72.191



0, 0.000, 0.000



53, 0.007, 296.813

Same Dimension

The Same Dimension uses a secret algorithm to generate beautiful new colors.



71, 18.290, 70.085



87, 27.575, 69.348



78, 27.614, 106.101



40, 3.645, 72.221



43, 61.397, 59.483



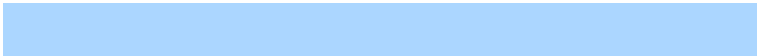
7, 12.952, 55.270

Inverse Universe

The Inverse Universe completely reimagines the original color for something new.



69, 16.828, 257.524



84, 24.844, 258.733



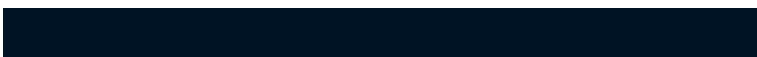
62, 29.348, 292.171



40, 3.557, 254.653



36, 49.385, 281.729



5, 13.723, 268.659

Previews

White Background



This preview shows how the CIELCh color 71, 18.290, 70.077 looks on a white background.

Color Contrast Check

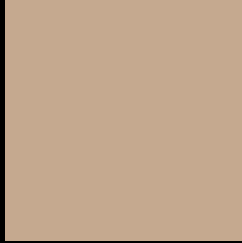
Large Text (above 18pt) WCAG AA × Fail

Any Text WCAG AA × Fail

Large Text (above 18pt) WCAG AAA × Fail

Any Text WCAG AAA × Fail

Black Background



This preview shows how the CIELCh color 71, 18.290, 70.077 looks on a black background.

Color Contrast Check

Large Text (above 18pt) WCAG AA ✓ Pass

Any Text WCAG AA ✓ Pass

Large Text (above 18pt) WCAG AAA ✓ Pass

Any Text WCAG AAA ✓ Pass

If you want to check with other color combinations, try the [Color Contrast Checker](#).

CIELCh 71, 18.290, 70.077

Background



This preview shows how black text looks on a background with the CIELCh color 71, 18.290, 70.077.



This preview shows how white text looks on a background with the CIELCh color 71, 18.290, 70.077.

Color Blindness Simulation

Color vision deficiency is a very complex topic, and I could not describe the different causes any better than Wikipedia does, so if you want to learn more, you should check out their [article about color blindness](#).

Dichromacy



Original Color


71, 18.290, 70.077

Protanopia

71, 16.237, 94.257

Deuteranopia

71, 19.240, 62.530



Tritanopia
71, 15.769, 354.290

Trichromacy



Original Color
71, 18.290, 70.077

Protanomaly
71, 16.724, 84.344

Deuteranomaly
71, 19.014, 65.307

Tritanomaly
71, 13.320, 22.869

Monochromacy



Original Color
71, 18.290, 70.077

Achromatopsia
71, 0.009, 296.813

Achromatomaly
71, 6.230, 71.238

CSS Examples

Text

The CSS property to change the color of the text to CIELCh 71, 18.290, 70.077 is called "color". The color property can be set on classes, ids or directly on the HTML element.

This example shows how text in the color `rgb(197, 169, 143)` looks like.

```
.text, #text, p{  
    color:rgb(197, 169, 143)  
}
```

If you want to add a text shadow in that color use the text-shadow property, you can generate a text shadow directly with our [CSS Text Shadow Generator](#).

Here you see how black text with a 4 pixel rgb(197, 169, 143) colored shadow looks like.

```
.shadow{ text-shadow: 4px 4px 2px rgb(197, 169, 143) }
```

Border

The CSS property to change the border of an element to CIELCh 71, 18.290, 70.077 is called "border". The border property can be set on classes, ids or directly on the HTML element.

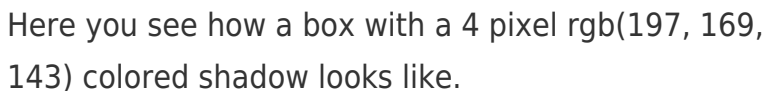
This example shows the color as border, it can be applied via the CSS property "border" or "border-color".

```
.border, #border, table{ border:4px solid rgb(197, 169, 143) }
```

If only the border color should be changed use the property `border-color`.

```
.border{ border-color:rgb(197, 169, 143) }
```

If you want to add a box shadow in that color use:



Here you see how a box with a 4 pixel `rgb(197, 169, 143)` colored shadow looks like.

```
.boxshadow{ -moz-box-shadow:4px 4px 4px 4px rgb(197, 169, 143); -webkit-box-shadow:4px 4px 4px 4px rgb(197, 169, 143); box-shadow:4px 4px 4px 4px rgb(197, 169, 143) }
```

Background

The CSS property to change the background color of an element to CIELCh 71, 18.290, 70.077 is called "background". The background property can be set on classes, ids or directly on the HTML element.

```
.background, #background, body{  
background: rgb(197, 169, 143) }
```

If only the background color should be changed can be used:

```
.background{ background-color: rgb(197,  
169, 143) }
```

This example shows the color as background, it is applied via the CSS property "background".

To optimize and compress your CSS code, you can use our [online CSS compressor and optimizer](#) based on csstidy. If you want to create a linear or radial gradient as background or border, check our [CSS Gradient Generator](#).

Hey! You found this booklet interesting? Support Converting Colors with the new Membership Option!

The pro membership hides all ads, plus gives you double the colors in the color bucket, and more awesome pro features!

[Learn more, Memberships starting at \\$2.50/m!](#)

**Follow me
on Twitter!**

@ConvertingColor