

Converting Colors

CIELCh(71, 18.175, 72.757)

Have a look what the booklet for
CIELCh(71, 18.175, 72.757) contains.

CIELCh(71, 18.026, 71.087)	3
<i>Conversions</i>	4
<i>Details</i>	6
<i>Harmonies</i>	11
<i>Previews</i>	20
<i>Color Blindness Simulation</i>	23
<i>CSS Examples</i>	26

Color

CIELCh(71, 18.026, 71.087)

Conversions

Conversions Part 1

Format	Color
Hex	C4A98F
RGB	196, 169, 143
RGB Percent	77%, 66%, 56%
CMY	0.2307, 0.3366, 0.4386
CMYK	0.00, 0.14, 0.27, 0.23
HSL	29°, 31%, 67%
HSV	29°, 27%, 77%
XYZ	42.0016, 42.1875, 31.9821
YIQ	174.1090, 24.4380, -2.3620

Conversions

Conversions Part 2

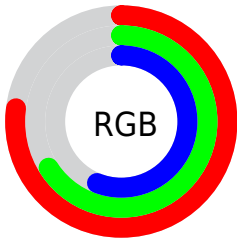
Format	Color
R _Y B	196, 194, 143
Decimal	12888463
CIE Lab	71.00, 5.84, 17.05
CIE LCh	71, 18.026, 71.087
Yxy	42.1875, 0.3615, 0.3631
Android (android.graphics.Color)	4291078543 (0xFFC4A98F)
YUV	174.1090, -15.3367, 19.1984
Hunter-Lab	64.9519, 1.7624, 16.2721

Details

The CIELCh color $71, 18.026, 71.087$ is a light color, and the websafe version is hex `CC9999`. A complement of this color would be $69, 16.679, 258.478$, and the grayscale version is $71, 0.009, 296.813$.

A 20% lighter version of the original color is $91, 17.876, 70.744$, and $51, 17.970, 70.193$ is the 20% darker color. If you saturate the color by 10%, you get $68, 25.310, 69.864$, and if you desaturate by 10%, it is $74, 11.081, 72.311$.

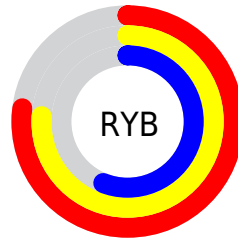
Distribution



Red (77%)

Green (66%)

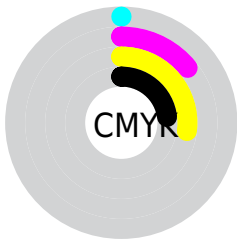
Blue (56%)



Red (77%)

Yellow (76%)

Blue (56%)

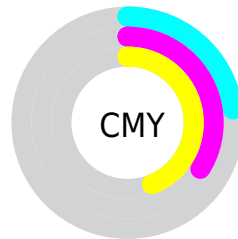


Cyan (0%)

Magenta (14%)

Yellow (27%)

Black (23%)



Cyan (23%)

Magenta (34%)

Yellow (44%)

Brightness & Saturation Gradients

These gradients show how the CIELCh color 71, 18.026, 71.087 changes by changing the brightness by 10 percent. The first figure shows a shift by +10% for each color and the second figure -10%.

Similar to the brightness gradients but the following saturation gradients show a change of the CIELCh color 71, 18.026, 71.087 by changing the saturation by 10% instead.

■ 71, 18.026, 71.087

■ 71, 18.026, 71.087

■ 100, 18.026,
71.087

■ 61, 18.026, 71.087

■ 91, 18.026, 71.087

■ 51, 18.026, 71.087

■ 41, 18.026, 71.087

■ 31, 18.026, 71.087

■ 21, 18.026, 71.087

■ 11, 18.026, 71.087

■ 1, 18.026, 71.087

■ 0, 18.026, 71.087

■ 71, 18.026, 71.087

■ 71, 18.026, 71.087

68, 25.310, 69.864

74, 11.081, 72.311

65, 32.925, 68.624

77, 4.461, 73.476

62, 40.814, 67.366

80, 1.860, 254.950

60, 48.829, 66.056

83, 7.912, 255.959

57, 56.638, 64.601

86, 13.722,
257.066

55, 63.606, 62.804

89, 16.943,
251.871

53, 68.849, 60.365

52, 70.312, 59.657

92, 16.025,
229.635

95, 17.493,
208.387

96, 19.260,
198.234

Harmonies

Complementary

The Complementary color scheme is a pair of colors which are on the opposite of each other on the color wheel.



71, 18.026, 71.087



69, 16.679, 258.478

Rectangle

The Rectangle color scheme consists of four colors that form a rectangle on the color wheel.



71, 18.026, 71.087



71, 18.026, 121.087



71, 18.026, 251.087



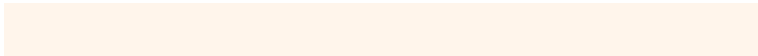
71, 18.026, 301.087

Sweetspot

The Sweet Spot groups the original color and five complimentary colors.



71, 18.026, 71.095



97, 6.306, 73.354



65, 25.164, 345.169



51, 4.498, 73.181



0, 0.000, 0.000



53, 0.007, 296.813

Same Dimension

The Same Dimension uses a secret algorithm to generate beautiful new colors.



71, 18.026, 71.095



88, 26.770, 70.422



78, 27.569, 106.872



39, 3.587, 73.215



43, 60.441, 60.261



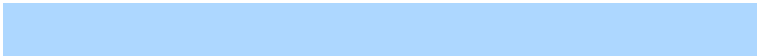
6, 11.475, 57.175

Inverse Universe

The Inverse Universe completely reimagines the original color for something new.



69, 16.679, 258.478



84, 24.331, 259.556



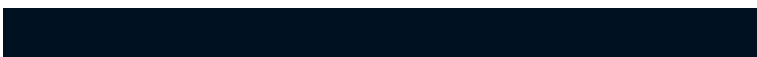
61, 29.335, 292.765



39, 3.505, 255.658



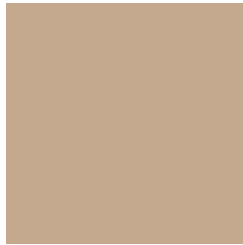
35, 49.651, 282.606



5, 12.693, 268.604

Previews

White Background



This preview shows how the CIELCh color 71, 18.026, 71.087 looks on a white background.

Color Contrast Check

Large Text (above 18pt) WCAG AA × Fail

Any Text WCAG AA × Fail

Large Text (above 18pt) WCAG AAA × Fail

Any Text WCAG AAA × Fail

Black Background



This preview shows how the CIELCh color 71, 18.026, 71.087 looks on a black background.

Color Contrast Check

Large Text (above 18pt) WCAG AA ✓ Pass

Any Text WCAG AA ✓ Pass

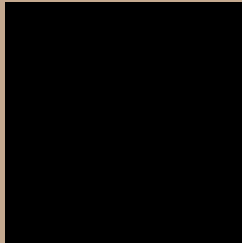
Large Text (above 18pt) WCAG AAA ✓ Pass

Any Text WCAG AAA ✓ Pass

If you want to check with other color combinations, try the [Color Contrast Checker](#).

CIELCh 71, 18.026, 71.087

Background



This preview shows how black text looks on a background with the CIELCh color 71, 18.026, 71.087.



This preview shows how white text looks on a background with the CIELCh color 71, 18.026, 71.087.

Color Blindness Simulation

Color vision deficiency is a very complex topic, and I could not describe the different causes any better than Wikipedia does, so if you want to learn more, you should check out their [article about color blindness](#).

Dichromacy



Original Color

71, 18.026, 71.087

Protanopia

71, 16.141, 95.649

Deuteranopia

71, 18.846, 61.435



Tritanopia

71, 15.425, 353.599

Trichromacy



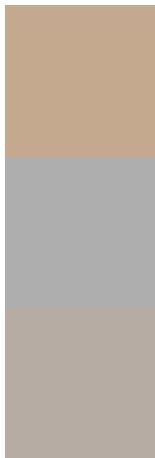
Original Color
71, 18.026, 71.087

Protanomaly
71, 16.555, 85.629

Deuteranomaly
71, 18.306, 65.156

Tritanomaly
71, 12.919, 22.905

Monochromacy



Original Color
71, 18.026, 71.087

Achromatopsia
71, 0.009, 296.813

Achromatomaly
71, 6.230, 71.238

CSS Examples

Text

The CSS property to change the color of the text to CIELCh 71, 18.026, 71.087 is called "color". The color property can be set on classes, ids or directly on the HTML element.

This example shows how text in the color `rgb(196, 169, 143)` looks like.

```
.text, #text, p{  
    color:rgb(196, 169, 143)  
}
```

If you want to add a text shadow in that color use the text-shadow property, you can generate a text shadow directly with our [CSS Text Shadow Generator](#).

Here you see how black text with a 4 pixel rgb(196, 169, 143) colored shadow looks like.

```
.shadow{ text-shadow: 4px 4px 2px rgb(196, 169, 143) }
```

Border

The CSS property to change the border of an element to CIELCh 71, 18.026, 71.087 is called "border". The border property can be set on classes, ids or directly on the HTML element.

This example shows the color as border, it can be applied via the CSS property "border" or "border-color".

```
.border, #border, table{ border:4px solid rgb(196, 169, 143) }
```

If only the border color should be changed use the property `border-color`.

```
.border{ border-color:rgb(196, 169, 143) }
```

If you want to add a box shadow in that color use:

Here you see how a box with a 4 pixel `rgb(196, 169, 143)` colored shadow looks like.

```
.boxshadow{ -moz-box-shadow:4px 4px 4px  
4px rgb(196, 169, 143); -webkit-box-  
shadow:4px 4px 4px 4px rgb(196, 169, 143);  
box-shadow:4px 4px 4px 4px rgb(196, 169,  
143) }
```

Background

The CSS property to change the background color of an element to CIELCh 71, 18.026, 71.087 is called "background". The background property can be set on classes, ids or directly on the HTML element.

```
.background, #background, body{  
background: rgb(196, 169, 143) }
```

If only the background color should be changed can be used:

```
.background{ background-color: rgb(196,  
169, 143) }
```

This example shows the color as background, it is applied via the CSS property "background".

To optimize and compress your CSS code, you can use our [online CSS compressor and optimizer](#) based on csstidy. If you want to create a linear or radial gradient as background or border, check our [CSS Gradient Generator](#).

Hey! You found this booklet interesting? Support Converting Colors with the new Membership Option!

The pro membership hides all ads, plus gives you double the colors in the color bucket, and more awesome pro features!

[Learn more, Memberships starting at \\$2.50/m!](#)

**Follow me
on Twitter!**

@ConvertingColor