

# Converting Colors

CIELCh(71, 18.299, 50.497)

Have a look what the booklet for  
CIELCh(71, 18.299, 50.497) contains.

<b>CIELCh(71, 18.102, 50.935)</b> .....	3
<i><b>Conversions</b></i> .....	4
<i><b>Details</b></i> .....	6
<i><b>Harmonies</b></i> .....	11
<i><b>Previews</b></i> .....	20
<i><b>Color Blindness Simulation</b></i> .....	23
<i><b>CSS Examples</b></i> .....	26

# **Color**

**CIELCh(71, 18.102, 50.935)**

# Conversions

## Conversions Part 1

Format	Color
Hex	CCA695
RGB	204, 166, 149
RGB Percent	80%, 65%, 58%
CMY	0.2007, 0.3497, 0.4163
CMYK	0.00, 0.19, 0.27, 0.20
HSL	19°, 35%, 69%
HSV	19°, 27%, 80%
XYZ	43.8699, 42.1875, 34.1948
YIQ	175.4240, 28.1050, 2.7690

# Conversions

## Conversions Part 2

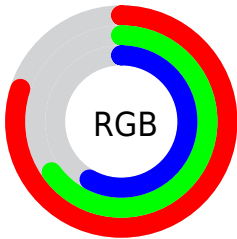
<b>Format</b>	<b>Color</b>
R <sub>Y</sub> B	204, 174, 149
Decimal	13411989
CIE Lab	71.00, 11.41, 14.05
CIE LCh	71, 18.102, 50.935
Yxy	42.1875, 0.3648, 0.3508
Android (android.graphics.Color)	4291602069 (0xFFCCA695)
YUV	175.4240, -13.0270, 25.0612
Hunter-Lab	64.9519, 6.8968, 14.2523

# Details

The CIELCh color **71, 18.102, 50.935** is a light color, and the websafe version is hex **CC9999**. A complement of this color would be **74, 15.472, 235.381**, and the grayscale version is **72, 0.009, 296.813**.

A 20% lighter version of the original color is **90, 15.958, 55.569**, and **51, 18.219, 51.106** is the 20% darker color. If you saturate the color by 10%, you get **67, 25.786, 50.448**, and if you desaturate by 10%, it is **75, 10.967, 51.515**.

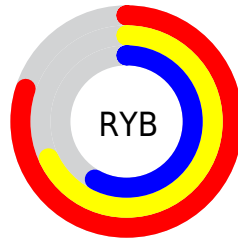
# Distribution



Red (80%)

Green (65%)

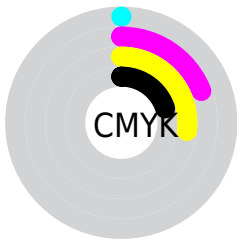
Blue (58%)



Red (80%)

Yellow (68%)

Blue (58%)

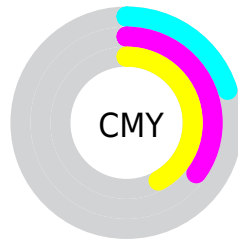


Cyan (0%)

Magenta (19%)

Yellow (27%)

Black (20%)



Cyan (20%)

Magenta (35%)

Yellow (42%)

# Brightness & Saturation Gradients

These gradients show how the CIELCh color 71, 18.102, 50.935 changes by changing the brightness by 10 percent. The first figure shows a shift by +10% for each color and the second figure -10%.

Similar to the brightness gradients but the following saturation gradients show a change of the CIELCh color 71, 18.102, 50.935 by changing the saturation by 10% instead.



71, 18.102, 50.935

71, 18.102, 50.935

100, 18.102,  
50.935

61, 18.102, 50.935

91, 18.102, 50.935

51, 18.102, 50.935

41, 18.102, 50.935

31, 18.102, 50.935

21, 18.102, 50.935

11, 18.102, 50.935

1, 18.102, 50.935

0, 18.102, 50.935

71, 18.102, 50.935

71, 18.102, 50.935

67, 25.786, 50.448

75, 10.967, 51.515

63, 34.039, 50.053

79, 4.342, 52.098

60, 42.840, 49.770

83, 1.821, 233.192

56, 52.082, 49.582

87, 7.573, 233.707

53, 61.481, 49.404

92, 12.961,  
234.421

50, 70.390, 48.998

95, 15.490,  
207.466

48, 77.629, 47.914

47, 79.666, 47.649

97, 16.927,  
198.382

# Harmonies

# Complementary

The Complementary color scheme is a pair of colors which are on the opposite of each other on the color wheel.



71, 18.102, 50.935



74, 15.472, 235.381

# Rectangle

The Rectangle color scheme consists of four colors that form a rectangle on the color wheel.



71, 18.102, 50.935



71, 18.102, 100.935



71, 18.102, 230.935



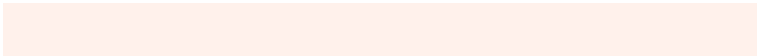
71, 18.102, 280.935

# Sweetspot

The Sweet Spot groups the original color and five complimentary colors.



71, 18.101, 50.943



96, 5.996, 52.038



68, 29.263, 336.210



51, 4.285, 51.952



0, 0.000, 0.000



53, 0.007, 296.813



# Same Dimension

The Same Dimension uses a secret algorithm to generate beautiful new colors.



71, 18.101, 50.943



84, 26.297, 50.662



78, 23.783, 97.270



41, 3.564, 51.966



39, 67.945, 48.153



6, 15.203, 38.017



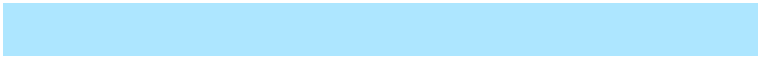


# Inverse Universe

The Inverse Universe completely reimagines the original color for something new.



74, 15.472, 235.381



88, 21.672, 236.146



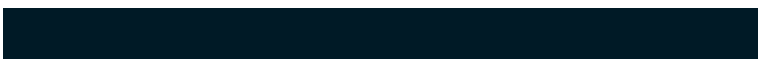
66, 24.524, 284.113



41, 3.393, 233.524



45, 35.853, 257.354



8, 12.163, 245.757



# Previews

## White Background



This preview shows how the CIELCh color 71, 18.102, 50.935 looks on a white background.

## Color Contrast Check

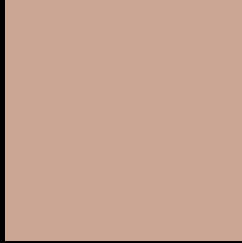
Large Text (above 18pt) WCAG AA × Fail

Any Text WCAG AA × Fail

Large Text (above 18pt) WCAG AAA × Fail

Any Text WCAG AAA × Fail

# Black Background



This preview shows how the CIELCh color 71, 18.102, 50.935 looks on a black background.

## Color Contrast Check

Large Text (above 18pt) WCAG AA ✓ Pass

Any Text WCAG AA ✓ Pass

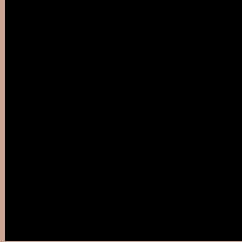
Large Text (above 18pt) WCAG AAA ✓ Pass

Any Text WCAG AAA ✓ Pass

If you want to check with other color combinations, try the [Color Contrast Checker](#).

# CIELCh 71, 18.102, 50.935

## Background



This preview shows how black text looks on a background with the CIELCh color 71, 18.102, 50.935.



This preview shows how white text looks on a background with the CIELCh color 71, 18.102, 50.935.

# Color Blindness Simulation

Color vision deficiency is a very complex topic, and I could not describe the different causes any better than Wikipedia does, so if you want to learn more, you should check out their [article about color blindness](#).

## Dichromacy



### Original Color

71, 18.102, 50.935

### Protanopia

71, 11.433, 90.948

### Deuteranopia

71, 16.664, 55.982



**Tritanopia**  
71, 18.633, 358.971



# Trichromacy



**Original Color**  
71, 18.102, 50.935

**Protanomaly**  
71, 13.106, 71.524

**Deuteranomaly**  
71, 17.004, 55.183

**Tritanomaly**  
71, 16.904, 17.266

# Monochromacy



**Original Color**  
71, 18.102, 50.935

**Achromatopsia**  
71, 0.009, 296.813

**Achromatomaly**  
71, 6.295, 56.786

# CSS Examples

## Text

The CSS property to change the color of the text to CIELCh 71, 18.102, 50.935 is called "color". The color property can be set on classes, ids or directly on the HTML element.

This example shows how text in the color `rgb(204, 166, 149)` looks like.

```
.text, #text, p{  
    color:rgb(204, 166, 149)  
}
```

If you want to add a text shadow in that color use the text-shadow property, you can generate a text shadow directly with our [CSS Text Shadow Generator](#).

Here you see how black text with a 4 pixel rgb(204, 166, 149) colored shadow looks like.

```
.shadow{ text-shadow: 4px 4px 2px rgb(204, 166, 149) }
```

## Border

The CSS property to change the border of an element to CIELCh 71, 18.102, 50.935 is called "border". The border property can be set on classes, ids or directly on the HTML element.

This example shows the color as border, it can be applied via the CSS property "border" or "border-color".

```
.border, #border, table{ border:4px solid rgb(204, 166, 149) }
```

If only the border color should be changed use the property `border-color`.

```
.border{ border-color:rgb(204, 166, 149) }
```

If you want to add a box shadow in that color use:

Here you see how a box with a 4 pixel `rgb(204, 166, 149)` colored shadow looks like.

```
.boxshadow{ -moz-box-shadow:4px 4px 4px  
4px rgb(204, 166, 149); -webkit-box-  
shadow:4px 4px 4px 4px rgb(204, 166, 149);  
box-shadow:4px 4px 4px 4px rgb(204, 166,  
149) }
```

# Background

The CSS property to change the background color of an element to CIELCh 71, 18.102, 50.935 is called "background". The background property can be set on classes, ids or directly on the HTML element.

```
.background, #background, body{  
background: rgb(204, 166, 149) }
```

If only the background color should be changed can be used:

```
.background{ background-color: rgb(204,  
166, 149) }
```

This example shows the color as background, it is applied via the CSS property "background".

To optimize and compress your CSS code, you can use our [online CSS compressor and optimizer](#) based on csstidy. If you want to create a linear or radial gradient as background or border, check our [CSS Gradient Generator](#).

Hey! You found this booklet interesting? Support Converting Colors with the new Membership Option!

The pro membership hides all ads, plus gives you double the colors in the color bucket, and more awesome pro features!

**[Learn more, Memberships starting at \\$2.50/m!](#)**

**Follow me  
on Twitter!**

@ConvertingColor