

Converting Colors

CIELCh(71, 22.045, 70.226)

Have a look what the booklet for
CIELCh(71, 22.045, 70.226) contains.

CIELCh(71, 21.868, 69.841)	3
<i>Conversions</i>	4
<i>Details</i>	6
<i>Harmonies</i>	11
<i>Previews</i>	20
<i>Color Blindness Simulation</i>	23
<i>CSS Examples</i>	26

Color

CIELCh(71, 21.868, 69.841)

Conversions

Conversions Part 1

Format	Color
Hex	C9A889
RGB	201, 168, 137
RGB Percent	79%, 66%, 54%
CMY	0.2121, 0.3415, 0.4630
CMYK	0.00, 0.16, 0.32, 0.21
HSL	29°, 37%, 66%
HSV	29°, 32%, 79%
XYZ	42.5644, 42.1875, 29.5389
YIQ	174.3330, 29.6190, -2.6450

Conversions

Conversions Part 2

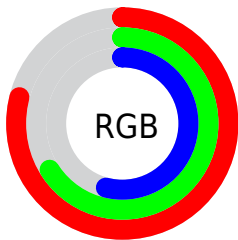
Format	Color
RYB	201, 197, 137
Decimal	13215881
CIELab	71.00, 7.54, 20.53
CIELCh	71, 21.868, 69.841
Yxy	42.1875, 0.3724, 0.3691
Android (android.graphics.Color)	4291405961 (0xFFC9A889)
YUV	174.3330, -18.4052, 23.3870
Hunter-Lab	64.9519, 3.3091, 18.5024

Details

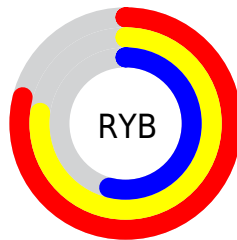
The CIELCh color **71, 21.868, 69.841** is a light color, and the websafe version is hex **CC9966**. A complement of this color would be **68, 19.845, 258.731**, and the grayscale version is **71, 0.009, 296.813**.

A 20% lighter version of the original color is **91, 20.735, 72.271**, and **51, 21.852, 69.649** is the 20% darker color. If you saturate the color by 10%, you get **68, 29.461, 68.626**, and if you desaturate by 10%, it is **74, 14.630, 71.062**.

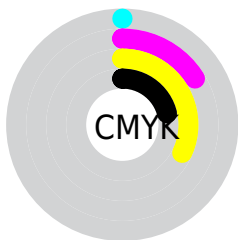
Distribution



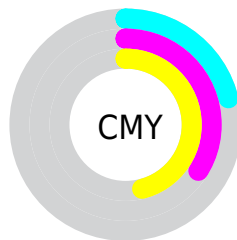
- Red (79%)
- Green (66%)
- Blue (54%)



- Red (79%)
- Yellow (77%)
- Blue (54%)



- Cyan (0%)
- Magenta (16%)
- Yellow (32%)
- Black (21%)



- Cyan (21%)
- Magenta (34%)
- Yellow (46%)

Brightness & Saturation Gradients

These gradients show how the CIELCh color 71, 21.868, 69.841 changes by changing the brightness by 10 percent. The first figure shows a shift by +10% for each color and the second figure -10%.

Similar to the brightness gradients but the following saturation gradients show a change of the CIELCh color 71, 21.868, 69.841 by changing the saturation by 10% instead.

■ 71, 21.868, 69.841

■ 71, 21.868, 69.841

■ 100, 21.868,
69.841

■ 61, 21.868, 69.841

■ 91, 21.868, 69.841

■ 51, 21.868, 69.841

■ 41, 21.868, 69.841

■ 31, 21.868, 69.841

■ 21, 21.868, 69.841

■ 11, 21.868, 69.841

■ 1, 21.868, 69.841

■ 0, 21.868, 69.841

■ 71, 21.868, 69.841

■ 71, 21.868, 69.841

68, 29.461, 68.626

74, 14.630, 71.062

65, 37.381, 67.396

77, 7.740, 72.253

62, 45.536, 66.138

80, 1.174, 73.174

60, 53.699, 64.795

84, 5.097, 254.746

57, 61.397, 63.229

87, 11.103,
255.845

55, 67.790, 61.163

90, 15.861,
254.075

53, 71.799, 59.095

93, 14.813,
229.374

95, 16.506,
205.980

96, 17.820,
198.325

Harmonies

Complementary

The Complementary color scheme is a pair of colors which are on the opposite of each other on the color wheel.



71, 21.868, 69.841



68, 19.845, 258.731

Rectangle

The Rectangle color scheme consists of four colors that form a rectangle on the color wheel.



71, 21.868, 69.841



71, 21.868, 119.841



71, 21.868, 249.841



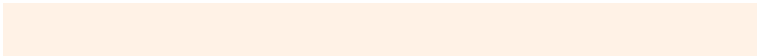
71, 21.868, 299.841

Sweetspot

The Sweet Spot groups the original color and five complimentary colors.



71, 21.868, 69.848



96, 7.892, 72.450



64, 30.286, 345.691



51, 5.404, 72.286



0, 0.000, 0.000



53, 0.007, 296.813

Same Dimension

The Same Dimension uses a secret algorithm to generate beautiful new colors.



71, 21.868, 69.848



86, 32.195, 69.032



79, 33.030, 106.398



40, 3.651, 72.537



43, 61.321, 59.713



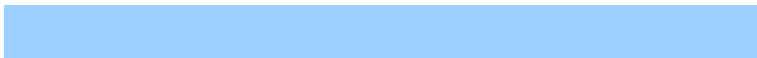
7, 12.951, 55.608

Inverse Universe

The Inverse Universe completely reimagines the original color for something new.



68, 19.845, 258.731



82, 28.551, 260.180



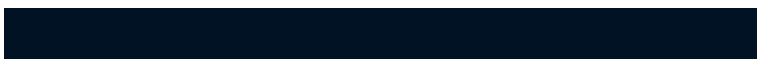
60, 35.616, 293.519



40, 3.565, 254.976



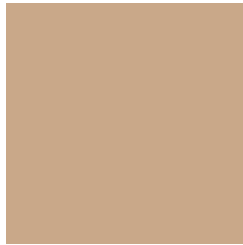
36, 49.673, 282.032



5, 13.769, 268.925

Previews

White Background



This preview shows how the CIELCh color 71, 21.868, 69.841 looks on a white background.

Color Contrast Check

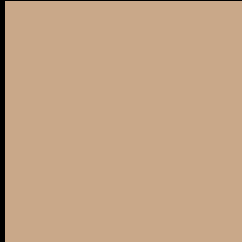
Large Text (above 18pt) WCAG AA × Fail

Any Text WCAG AA × Fail

Large Text (above 18pt) WCAG AAA × Fail

Any Text WCAG AAA × Fail

Black Background



This preview shows how the CIELCh color 71, 21.868, 69.841 looks on a black background.

Color Contrast Check

Large Text (above 18pt) WCAG AA ✓ Pass

Any Text WCAG AA ✓ Pass

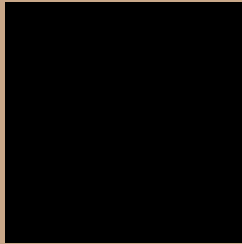
Large Text (above 18pt) WCAG AAA ✓ Pass

Any Text WCAG AAA ✓ Pass

If you want to check with other color combinations, try the [Color Contrast Checker](#).

CIELCh 71, 21.868, 69.841

Background



This preview shows how black text looks on a background with the CIELCh color 71, 21.868, 69.841.




This preview shows how white text looks on a background with the CIELCh color 71, 21.868, 69.841.

Color Blindness Simulation

Color vision deficiency is a very complex topic, and I could not describe the different causes any better than Wikipedia does, so if you want to learn more, you should check out their [article about color blindness](#).

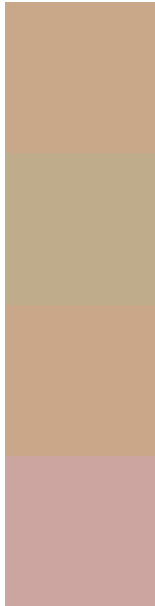
Dichromacy





Tritanopia
71, 17.359, 359.042

Trichromacy



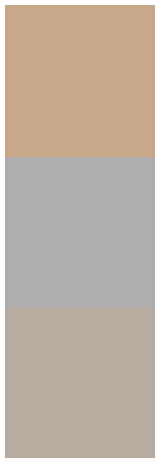
Original Color
71, 21.868, 69.841

Protanomaly
71, 19.572, 84.968

Deuteranomaly
71, 22.023, 67.376

Tritanomaly
71, 15.608, 28.660

Monochromacy



Original Color
71, 21.868, 69.841

Achromatopsia
71, 0.009, 296.813

Achromatomaly
71, 7.585, 71.508

CSS Examples

Text

The CSS property to change the color of the text to CIELCh 71, 21.868, 69.841 is called "color". The color property can be set on classes, ids or directly on the HTML element.

This example shows how text in the color `rgb(201, 168, 137)` looks like.

```
.text, #text, p{  
    color:rgb(201, 168, 137)  
}
```

If you want to add a text shadow in that color use the text-shadow property, you can generate a text shadow directly with our [CSS Text Shadow Generator](#).

Here you see how black text with a 4 pixel rgb(201, 168, 137) colored shadow looks like.

```
.shadow{ text-shadow: 4px 4px 2px rgb(201, 168, 137) }
```

Border

The CSS property to change the border of an element to CIELCh 71, 21.868, 69.841 is called "border". The border property can be set on classes, ids or directly on the HTML element.

This example shows the color as border, it can be applied via the CSS property "border" or "border-color".

```
.border, #border, table{ border:4px solid rgb(201, 168, 137) }
```

If only the border color should be changed use the property `border-color`.

```
.border{ border-color:rgb(201, 168, 137) }
```

If you want to add a box shadow in that color use:

Here you see how a box with a 4 pixel `rgb(201, 168, 137)` colored shadow looks like.

```
.boxshadow{ -moz-box-shadow:4px 4px 4px  
4px rgb(201, 168, 137); -webkit-box-  
shadow:4px 4px 4px 4px rgb(201, 168, 137);  
box-shadow:4px 4px 4px 4px rgb(201, 168,  
137) }
```

Background

The CSS property to change the background color of an element to CIELCh 71, 21.868, 69.841 is called "background". The background property can be set on classes, ids or directly on the HTML element.

```
.background, #background, body{  
background: rgb(201, 168, 137) }
```

If only the background color should be changed can be used:

```
.background{ background-color: rgb(201,  
168, 137) }
```

This example shows the color as background, it is applied via the CSS property "background".

To optimize and compress your CSS code, you can use our [online CSS compressor and optimizer](#) based on csstidy. If you want to create a linear or radial gradient as background or border, check our [CSS Gradient Generator](#).

Hey! You found this booklet interesting? Support Converting Colors with the new Membership Option!

The pro membership hides all ads, plus gives you double the colors in the color bucket, and more awesome pro features!

[Learn more, Memberships starting at \\$2.50/m!](#)

**Follow me
on Twitter!**

@ConvertingColor