

# Converting Colors

CIELCh(71, 22.294, 45.160)

Have a look what the booklet for  
CIELCh(71, 22.294, 45.160) contains.

<b>CIELCh(71, 22.294, 45.160)</b> .....	3
<b><i>Conversions</i></b> .....	4
<b><i>Details</i></b> .....	6
<b><i>Harmonies</i></b> .....	11
<b><i>Previews</i></b> .....	20
<b><i>Color Blindness Simulation</i></b> .....	23
<b><i>CSS Examples</i></b> .....	26

# Color

**CIELCh(71, 22.294, 45.160)**

# Conversions

## Conversions Part 1

Format	Color
Hex	D4A392
RGB	212, 163, 146
RGB Percent	83%, 64%, 57%
CMY	0.1692, 0.3613, 0.4280
CMYK	0.00, 0.23, 0.31, 0.17
HSL	15°, 43%, 70%
HSV	15°, 31%, 83%
XYZ	45.3551, 42.1875, 32.8888
YIQ	175.7130, 34.6610, 5.1010

# Conversions

## Conversions Part 2

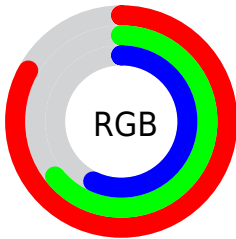
Format	Color
R <sub>Y</sub> B	212, 169, 146
Decimal	13935506
CIE Lab	71.00, 15.72, 15.81
CIE LCh	71, 22.294, 45.160
Yxy	42.1875, 0.3766, 0.3503
Android (android.graphics.Color)	4292125586 (0xFFD4A392)
YUV	175.7130, -14.6485, 31.8237
Hunter-Lab	64.9519, 10.9784, 15.4445

# Details

The CIELCh color **71, 22.294, 45.160** is a light color, and the websafe version is hex **CC9999**. A complement of this color would be **76, 18.190, 228.808**, and the grayscale version is **72, 0.009, 296.813**.

A 20% lighter version of the original color is **90, 16.975, 53.306**, and **51, 22.409, 45.528** is the 20% darker color. If you saturate the color by 10%, you get **67, 30.672, 45.030**, and if you desaturate by 10%, it is **75, 14.534, 45.428**.

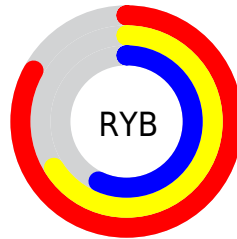
# Distribution



Red (83%)

Green (64%)

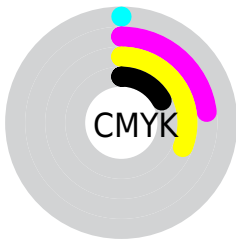
Blue (57%)



Red (83%)

Yellow (66%)

Blue (57%)

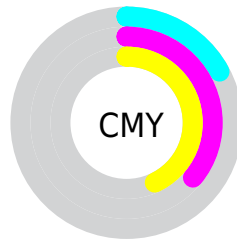


Cyan (0%)

Magenta (23%)

Yellow (31%)

Black (17%)



Cyan (17%)

Magenta (36%)

Yellow (43%)

# Brightness & Saturation Gradients

These gradients show how the CIELCh color 71, 22.294, 45.160 changes by changing the brightness by 10 percent. The first figure shows a shift by +10% for each color and the second figure -10%.

Similar to the brightness gradients but the following saturation gradients show a change of the CIELCh color 71, 22.294, 45.160 by changing the saturation by 10% instead.



71, 22.294, 45.160

71, 22.294, 45.160

100, 22.294,  
45.160

61, 22.294, 45.160

91, 22.294, 45.160

51, 22.294, 45.160

41, 22.294, 45.160

31, 22.294, 45.160

21, 22.294, 45.160

11, 22.294, 45.160

1, 22.294, 45.160

0, 22.294, 45.160

71, 22.294, 45.160

71, 22.294, 45.160

67, 30.672, 45.030

75, 14.534, 45.428

63, 39.675, 45.045

80, 7.361, 45.766

59, 49.243, 45.224

84, 0.726, 45.539

55, 59.201, 45.540

89, 5.426, 226.900

52, 69.121, 45.856

94, 11.150,  
227.392

50, 78.049, 45.806

97, 14.416,  
198.545

48, 84.305, 45.284

# Harmonies

# Complementary

The Complementary color scheme is a pair of colors which are on the opposite of each other on the color wheel.



71, 22.294, 45.160



76, 18.190, 228.808

# Rectangle

The Rectangle color scheme consists of four colors that form a rectangle on the color wheel.



71, 22.294, 45.160



71, 22.294, 95.160



71, 22.294, 225.160



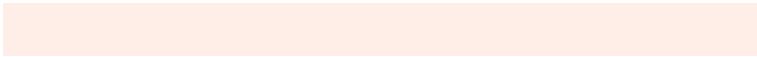
71, 22.294, 275.160

# Sweetspot

The Sweet Spot groups the original color and five complimentary colors.



71, 22.293, 45.167



95, 6.852, 45.836



68, 36.056, 334.464



50, 4.789, 45.787



0, 0.000, 0.000



53, 0.007, 296.813



# Same Dimension

The Same Dimension uses a secret algorithm to generate beautiful new colors.



71, 22.293, 45.167



81, 31.574, 45.065



79, 27.056, 93.428



43, 3.756, 45.825



39, 71.435, 45.727



7, 18.786, 34.530



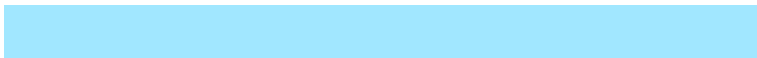


# Inverse Universe

The Inverse Universe completely reimagines the original color for something new.



76, 18.190, 228.808



88, 24.557, 229.590



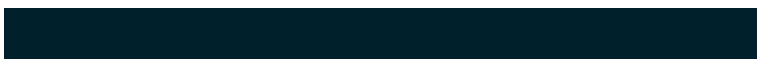
67, 27.667, 281.842



44, 3.556, 226.965



50, 34.130, 247.517



11, 12.830, 237.620



# Previews

## White Background



This preview shows how the CIELCh color 71, 22.294, 45.160 looks on a white background.

## Color Contrast Check

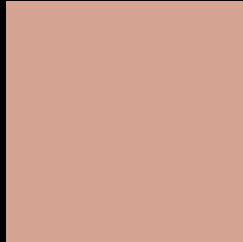
Large Text (above 18pt) WCAG AA × Fail

Any Text WCAG AA × Fail

Large Text (above 18pt) WCAG AAA × Fail

Any Text WCAG AAA × Fail

# Black Background



This preview shows how the CIELCh color 71, 22.294, 45.160 looks on a black background.

## Color Contrast Check

Large Text (above 18pt) WCAG AA ✓ Pass

Any Text WCAG AA ✓ Pass

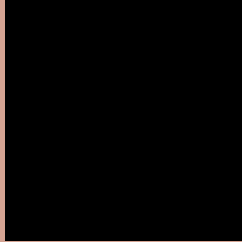
Large Text (above 18pt) WCAG AAA ✓ Pass

Any Text WCAG AAA ✓ Pass

If you want to check with other color combinations, try the [Color Contrast Checker](#).

# CIELCh 71, 22.294, 45.160

## Background



This preview shows how black text looks on a background with the CIELCh color 71, 22.294, 45.160.



This preview shows how white text looks on a background with the CIELCh color 71, 22.294, 45.160.

# Color Blindness Simulation

Color vision deficiency is a very complex topic, and I could not describe the different causes any better than Wikipedia does, so if you want to learn more, you should check out their [article about color blindness](#).

## Dichromacy



### Original Color

71, 22.294, 45.160

### Protanopia

71, 12.879, 94.652

### Deuteranopia

71, 18.460, 60.291



## Tritanopia

71, 22.641, 4.970



# Trichromacy



**Original Color**  
71, 22.294, 45.160

**Protanomaly**  
71, 14.756, 70.183

**Deuteranomaly**  
71, 19.819, 53.504

**Tritanomaly**  
71, 21.419, 18.499

# Monochromacy



**Original Color**  
71, 22.294, 45.160

**Achromatopsia**  
72, 0.009, 296.813

**Achromatomaly**  
71, 7.708, 44.832

# CSS Examples

## Text

The CSS property to change the color of the text to CIELCh 71, 22.294, 45.160 is called "color". The color property can be set on classes, ids or directly on the HTML element.

This example shows how text in the color `rgb(212, 163, 146)` looks like.

```
.text, #text, p{  
    color:rgb(212, 163, 146)  
}
```

If you want to add a text shadow in that color use the text-shadow property, you can generate a text shadow directly with our [CSS Text Shadow Generator](#).

Here you see how black text with a 4 pixel rgb(212, 163, 146) colored shadow looks like.

```
.shadow{ text-shadow: 4px 4px 2px rgb(212, 163, 146) }
```

## Border

The CSS property to change the border of an element to CIELCh 71, 22.294, 45.160 is called "border". The border property can be set on classes, ids or directly on the HTML element.

This example shows the color as border, it can be applied via the CSS property "border" or "border-color".

```
.border, #border, table{ border:4px solid rgb(212, 163, 146) }
```

If only the border color should be changed use the property `border-color`.

```
.border{ border-color:rgb(212, 163, 146) }
```

If you want to add a box shadow in that color use:

Here you see how a box with a 4 pixel `rgb(212, 163, 146)` colored shadow looks like.

```
.boxshadow{ -moz-box-shadow:4px 4px 4px  
4px rgb(212, 163, 146); -webkit-box-  
shadow:4px 4px 4px 4px rgb(212, 163, 146);  
box-shadow:4px 4px 4px 4px rgb(212, 163,  
146) }
```

# Background

The CSS property to change the background color of an element to CIELCh 71, 22.294, 45.160 is called "background". The background property can be set on classes, ids or directly on the HTML element.

```
.background, #background, body{  
background: rgb(212, 163, 146) }
```

If only the background color should be changed can be used:

```
.background{ background-color: rgb(212,  
163, 146) }
```

This example shows the color as background, it is applied via the CSS property "background".

To optimize and compress your CSS code, you can use our [online CSS compressor and optimizer](#) based on csstidy. If you want to create a linear or radial gradient as background or border, check our [CSS Gradient Generator](#).

Hey! You found this booklet interesting? Support Converting Colors with the new Membership Option!

The pro membership hides all ads, plus gives you double the colors in the color bucket, and more awesome pro features!

**[Learn more, Memberships starting at \\$2.50/m!](#)**

**Follow me  
on Twitter!**

@ConvertingColor