

Converting Colors

CIELCh(71, 22.620, 47.830)

Have a look what the booklet for
CIELCh(71, 22.620, 47.830) contains.

CIELCh(71, 22.488, 47.919)	3
<i>Conversions</i>	4
<i>Details</i>	6
<i>Harmonies</i>	11
<i>Previews</i>	20
<i>Color Blindness Simulation</i>	23
<i>CSS Examples</i>	26

Color

CIELCh(71, 22.488, 47.919)

Conversions

Conversions Part 1

Format	Color
Hex	D3A390
RGB	211, 163, 144
RGB Percent	83%, 64%, 56%
CMY	0.1715, 0.3598, 0.4344
CMYK	0.00, 0.23, 0.32, 0.17
HSL	17°, 43%, 70%
HSV	17°, 32%, 83%
XYZ	45.1294, 42.1875, 32.2443
YIQ	175.1860, 34.7070, 4.2670

Conversions

Conversions Part 2

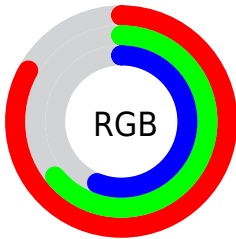
Format	Color
RYB	211, 171, 144
Decimal	13869968
CIELab	71.00, 15.07, 16.69
CIElCh	71, 22.488, 47.919
Yxy	42.1875, 0.3775, 0.3529
Android (android.graphics.Color)	4292060048 (0xFFD3A390)
YUV	175.1860, -15.3747, 31.4089
Hunter-Lab	64.9519, 10.3582, 16.0328

Details

The CIELCh color **71, 22.488, 47.919** is a light color, and the websafe version is hex **CC9999**. A complement of this color would be **75, 18.428, 232.495**, and the grayscale version is **72, 0.009, 296.813**.

A 20% lighter version of the original color is **90, 17.615, 55.963**, and **51, 22.310, 47.202** is the 20% darker color. If you saturate the color by 10%, you get **67, 30.775, 47.632**, and if you desaturate by 10%, it is **75, 14.801, 48.327**.

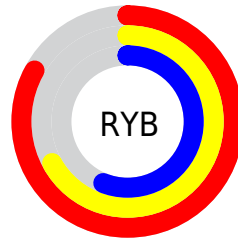
Distribution



Red (83%)

Green (64%)

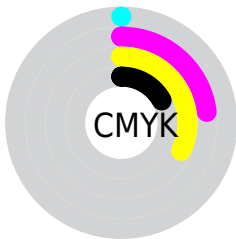
Blue (56%)



Red (83%)

Yellow (67%)

Blue (56%)

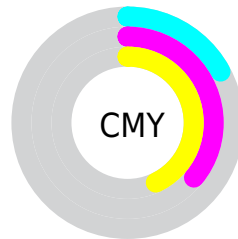


Cyan (0%)

Magenta (23%)

Yellow (32%)

Black (17%)



Cyan (17%)

Magenta (36%)

Yellow (43%)


Brightness & Saturation Gradients

These gradients show how the CIELCh color 71, 22.488, 47.919 changes by changing the brightness by 10 percent. The first figure shows a shift by +10% for each color and the second figure -10%.

Similar to the brightness gradients but the following saturation gradients show a change of the CIELCh color 71, 22.488, 47.919 by changing the saturation by 10% instead.

 71, 22.488, 47.919

 71, 22.488, 47.919

 100, 22.488,
47.919

 61, 22.488, 47.919

 91, 22.488, 47.919

 51, 22.488, 47.919

 41, 22.488, 47.919

 31, 22.488, 47.919

 21, 22.488, 47.919

 11, 22.488, 47.919

 1, 22.488, 47.919

 0, 22.488, 47.919

 71, 22.488, 47.919

 71, 22.488, 47.919

67, 30.775, 47.632

75, 14.801, 48.327

63, 39.668, 47.468

80, 7.683, 48.796

59, 49.107, 47.440

84, 1.085, 48.941

56, 58.908, 47.510

88, 5.045, 230.154

53, 68.628, 47.531

93, 10.761,
230.741

50, 77.291, 47.132

97, 14.279,
200.522

48, 83.022, 46.381

97, 14.602,
198.533

Harmonies

Complementary

The Complementary color scheme is a pair of colors which are on the opposite of each other on the color wheel.



71, 22.488, 47.919



75, 18.428, 232.495

Rectangle

The Rectangle color scheme consists of four colors that form a rectangle on the color wheel.



71, 22.488, 47.919



71, 22.488, 97.919



71, 22.488, 227.919



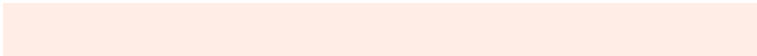
71, 22.488, 277.919

Sweetspot

The Sweet Spot groups the original color and five complimentary colors.



71, 22.487, 47.926



95, 7.586, 48.873



68, 35.806, 335.881



50, 5.204, 48.806



0, 0.000, 0.000



53, 0.007, 296.813

Same Dimension

The Same Dimension uses a secret algorithm to generate beautiful new colors.



71, 22.487, 47.926



81, 32.226, 47.716



79, 28.364, 95.615



42, 3.654, 48.905



39, 69.684, 46.889



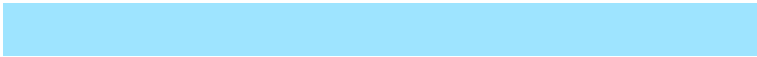
7, 17.003, 36.042

Inverse Universe

The Inverse Universe completely reimagines the original color for something new.



75, 18.428, 232.495



87, 25.136, 233.464



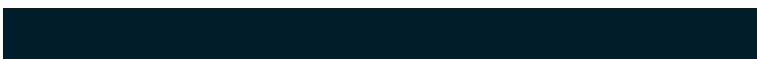
66, 29.311, 283.990



42, 3.469, 230.263



48, 34.897, 252.624



9, 12.533, 241.425

Previews

White Background



This preview shows how the CIELCh color 71, 22.488, 47.919 looks on a white background.

Color Contrast Check

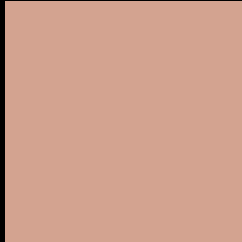
Large Text (above 18pt) WCAG AA × Fail

Any Text WCAG AA × Fail

Large Text (above 18pt) WCAG AAA × Fail

Any Text WCAG AAA × Fail

Black Background



This preview shows how the CIELCh color 71, 22.488, 47.919 looks on a black background.

Color Contrast Check

Large Text (above 18pt) WCAG AA ✓ Pass

Any Text WCAG AA ✓ Pass

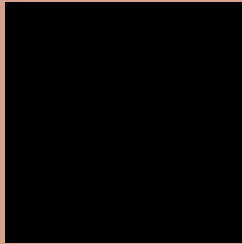
Large Text (above 18pt) WCAG AAA ✓ Pass

Any Text WCAG AAA ✓ Pass

If you want to check with other color combinations, try the [Color Contrast Checker](#).

CIELCh 71, 22.488, 47.919

Background



This preview shows how black text looks on a background with the CIELCh color 71, 22.488, 47.919.



This preview shows how white text looks on a background with the CIELCh color 71, 22.488, 47.919.

Color Blindness Simulation

Color vision deficiency is a very complex topic, and I could not describe the different causes any better than Wikipedia does, so if you want to learn more, you should check out their [article about color blindness](#).

Dichromacy





Tritanopia
71, 22.379, 3.284

Trichromacy



Original Color
71, 22.488, 47.919

Protanomaly
71, 15.643, 72.479

Deuteranomaly
71, 20.504, 57.630

Tritanomaly
71, 20.613, 19.786

Monochromacy



Original Color
71, 22.488, 47.919

Achromatopsia
71, 0.009, 296.813

Achromatomaly
71, 7.622, 49.697

CSS Examples

Text

The CSS property to change the color of the text to CIELCh 71, 22.488, 47.919 is called "color". The color property can be set on classes, ids or directly on the HTML element.

This example shows how text in the color `rgb(211, 163, 144)` looks like.

```
.text, #text, p{  
    color:rgb(211, 163, 144)  
}
```

If you want to add a text shadow in that color use the text-shadow property, you can generate a text shadow directly with our [CSS Text Shadow Generator](#).

Here you see how black text with a 4 pixel rgb(211, 163, 144) colored shadow looks like.

```
.shadow{ text-shadow: 4px 4px 2px rgb(211, 163, 144) }
```

Border

The CSS property to change the border of an element to CIELCh 71, 22.488, 47.919 is called "border". The border property can be set on classes, ids or directly on the HTML element.

This example shows the color as border, it can be applied via the CSS property "border" or "border-color".

```
.border, #border, table{ border:4px solid rgb(211, 163, 144) }
```

If only the border color should be changed use the property `border-color`.

```
.border{ border-color:rgb(211, 163, 144) }
```

If you want to add a box shadow in that color use:

Here you see how a box with a 4 pixel `rgb(211, 163, 144)` colored shadow looks like.

```
.boxshadow{ -moz-box-shadow:4px 4px 4px  
4px rgb(211, 163, 144); -webkit-box-  
shadow:4px 4px 4px 4px rgb(211, 163, 144);  
box-shadow:4px 4px 4px 4px rgb(211, 163,  
144) }
```

Background

The CSS property to change the background color of an element to CIELCh 71, 22.488, 47.919 is called "background". The background property can be set on classes, ids or directly on the HTML element.

```
.background, #background, body{  
background: rgb(211, 163, 144) }
```

If only the background color should be changed can be used:

```
.background{ background-color: rgb(211,  
163, 144) }
```

This example shows the color as background, it is applied via the CSS property "background".

To optimize and compress your CSS code, you can use our [online CSS compressor and optimizer](#) based on csstidy. If you want to create a linear or radial gradient as background or border, check our [CSS Gradient Generator](#).

Hey! You found this booklet interesting? Support Converting Colors with the new Membership Option!

The pro membership hides all ads, plus gives you double the colors in the color bucket, and more awesome pro features!

[Learn more, Memberships starting at \\$2.50/m!](#)

**Follow me
on Twitter!**

@ConvertingColor