

Converting Colors

CIELCh(71, 22.787, 77.416)

Have a look what the booklet for
CIELCh(71, 22.787, 77.416) contains.

CIELCh(71, 22.654, 76.153)	3
<i>Conversions</i>	4
<i>Details</i>	6
<i>Harmonies</i>	11
<i>Previews</i>	20
<i>Color Blindness Simulation</i>	23
<i>CSS Examples</i>	26

Color

CIELCh(71, 22.654, 76.153)

Conversions

Conversions Part 1

Format	Color
Hex	C6A986
RGB	198, 169, 134
RGB Percent	78%, 66%, 53%
CMY	0.2229, 0.3366, 0.4739
CMYK	0.00, 0.15, 0.32, 0.22
HSL	33°, 36%, 65%
HSV	33°, 32%, 78%
XYZ	41.8624, 42.1875, 28.5459
YIQ	173.6810, 28.5190, -4.7370

Conversions

Conversions Part 2

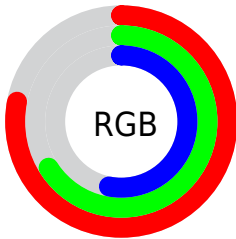
Format	Color
RYB	187, 198, 134
Decimal	13019526
CIELab	71.00, 5.42, 22.00
CIElCh	71, 22.654, 76.153
Yxy	42.1875, 0.3718, 0.3747
Android (android.graphics.Color)	4291209606 (0xFFC6A986)
YUV	173.6810, -19.5627, 21.3278
Hunter-Lab	64.9519, 1.3800, 19.4088

Details

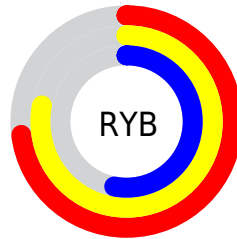
The CIELCh color $71, 22.654, 76.153$ is a light color, and the websafe version is hex `CC9966`. A complement of this color would be $66, 21.257, 265.552$, and the grayscale version is $71, 0.009, 296.813$.

A 20% lighter version of the original color is $91, 22.677, 76.572$, and $51, 22.664, 76.299$ is the 20% darker color. If you saturate the color by 10%, you get $68, 30.235, 74.820$, and if you desaturate by 10%, it is $74, 15.339, 77.471$.

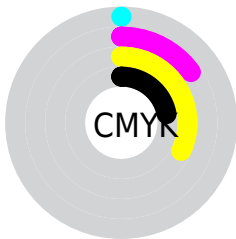
Distribution



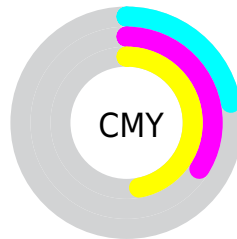
- Red (78%)
- Green (66%)
- Blue (53%)



- Red (73%)
- Yellow (78%)
- Blue (53%)



- Cyan (0%)
- Magenta (15%)
- Yellow (32%)
- Black (22%)



- Cyan (22%)
- Magenta (34%)
- Yellow (47%)

Brightness & Saturation Gradients

These gradients show how the CIELCh color 71, 22.654, 76.153 changes by changing the brightness by 10 percent. The first figure shows a shift by +10% for each color and the second figure -10%.

Similar to the brightness gradients but the following saturation gradients show a change of the CIELCh color 71, 22.654, 76.153 by changing the saturation by 10% instead.

■ 71, 22.654, 76.153

■ 71, 22.654, 76.153

■ 100, 22.654,
76.153

■ 61, 22.654, 76.153

■ 91, 22.654, 76.153

■ 51, 22.654, 76.153

■ 41, 22.654, 76.153

■ 31, 22.654, 76.153

■ 21, 22.654, 76.153

■ 11, 22.654, 76.153

■ 1, 22.654, 76.153

■ 0, 22.654, 76.153

■ 71, 22.654, 76.153

■ 71, 22.654, 76.153

68, 30.235, 74.820

74, 15.339, 77.471

66, 38.031, 73.449

76, 8.296, 78.743

63, 45.921, 72.025

79, 1.518, 79.824

61, 53.641, 70.490

82, 5.017, 261.326

59, 60.681, 68.715

85, 11.329,
262.467

56, 66.220, 66.459

88, 17.442,
263.588

55, 69.372, 64.403

90, 16.018,
247.361

93, 15.584,
226.449

95, 17.116,
207.131

Harmonies

Complementary

The Complementary color scheme is a pair of colors which are on the opposite of each other on the color wheel.



71, 22.654, 76.153



66, 21.257, 265.552

Rectangle

The Rectangle color scheme consists of four colors that form a rectangle on the color wheel.



71, 22.654, 76.153



71, 22.654, 126.153



71, 22.654, 256.153



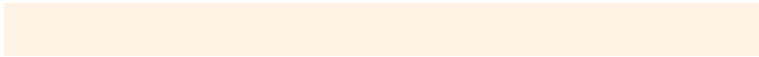
71, 22.654, 306.153

Sweetspot

The Sweet Spot groups the original color and five complimentary colors.



71, 22.654, 76.160



97, 8.240, 79.008



63, 29.501, 348.642



51, 5.638, 78.833



0, 0.000, 0.000



53, 0.007, 296.813

Same Dimension

The Same Dimension uses a secret algorithm to generate beautiful new colors.



71, 22.654, 76.160



87, 34.034, 75.187



78, 33.645, 108.553



41, 3.813, 79.101



46, 59.952, 64.963



8, 13.043, 63.354

Inverse Universe

The Inverse Universe completely reimagines the original color for something new.



66, 21.257, 265.552



80, 31.439, 267.161



58, 36.412, 295.277



40, 3.757, 261.619



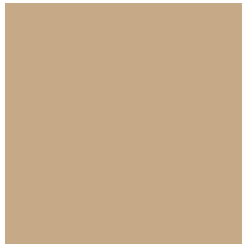
33, 56.163, 287.911



5, 14.781, 274.015

Previews

White Background



This preview shows how the CIELCh color 71, 22.654, 76.153 looks on a white background.

Color Contrast Check

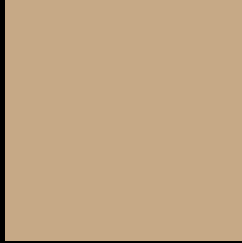
Large Text (above 18pt) WCAG AA × Fail

Any Text WCAG AA × Fail

Large Text (above 18pt) WCAG AAA × Fail

Any Text WCAG AAA × Fail

Black Background



This preview shows how the CIELCh color 71, 22.654, 76.153 looks on a black background.

Color Contrast Check

Large Text (above 18pt) WCAG AA ✓ Pass

Any Text WCAG AA ✓ Pass

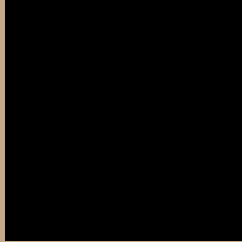
Large Text (above 18pt) WCAG AAA ✓ Pass

Any Text WCAG AAA ✓ Pass

If you want to check with other color combinations, try the [Color Contrast Checker](#).

CIELCh 71, 22.654, 76.153

Background



This preview shows how black text looks on a background with the CIELCh color 71, 22.654, 76.153.



This preview shows how white text looks on a background with the CIELCh color 71, 22.654, 76.153.

Color Blindness Simulation

Color vision deficiency is a very complex topic, and I could not describe the different causes any better than Wikipedia does, so if you want to learn more, you should check out their [article about color blindness](#).

Dichromacy



Original Color

71, 22.654, 76.153

Protanopia

71, 21.072, 95.774

Deuteranopia

71, 23.458, 67.420



Tritanopia
71, 16.832, 356.214

Trichromacy



Original Color
71, 22.654, 76.153

Protanomaly
71, 21.440, 87.924

Deuteranomaly
71, 23.026, 70.531

Tritanomaly
71, 14.403, 29.232

Monochromacy



Original Color
71, 22.654, 76.153

Achromatopsia
71, 0.009, 296.813

Achromatomaly
71, 7.803, 76.150

CSS Examples

Text

The CSS property to change the color of the text to CIELCh 71, 22.654, 76.153 is called "color". The color property can be set on classes, ids or directly on the HTML element.

This example shows how text in the color `rgb(198, 169, 134)` looks like.

```
.text, #text, p{  
    color:rgb(198, 169, 134)  
}
```

If you want to add a text shadow in that color use the text-shadow property, you can generate a text shadow directly with our [CSS Text Shadow Generator](#).

Here you see how black text with a 4 pixel rgb(198, 169, 134) colored shadow looks like.

```
.shadow{ text-shadow: 4px 4px 2px rgb(198, 169, 134) }
```

Border

The CSS property to change the border of an element to CIELCh 71, 22.654, 76.153 is called "border". The border property can be set on classes, ids or directly on the HTML element.

This example shows the color as border, it can be applied via the CSS property "border" or "border-color".

```
.border, #border, table{ border:4px solid rgb(198, 169, 134) }
```

If only the border color should be changed use the property `border-color`.

```
.border{ border-color:rgb(198, 169, 134) }
```

If you want to add a box shadow in that color use:

Here you see how a box with a 4 pixel `rgb(198, 169, 134)` colored shadow looks like.

```
.boxshadow{ -moz-box-shadow:4px 4px 4px  
4px rgb(198, 169, 134); -webkit-box-  
shadow:4px 4px 4px 4px rgb(198, 169, 134);  
box-shadow:4px 4px 4px 4px rgb(198, 169,  
134) }
```

Background

The CSS property to change the background color of an element to CIELCh 71, 22.654, 76.153 is called "background". The background property can be set on classes, ids or directly on the HTML element.

```
.background, #background, body{  
background: rgb(198, 169, 134) }
```

If only the background color should be changed can be used:

```
.background{ background-color: rgb(198,  
169, 134) }
```

This example shows the color as background, it is applied via the CSS property "background".

To optimize and compress your CSS code, you can use our [online CSS compressor and optimizer](#) based on csstidy. If you want to create a linear or radial gradient as background or border, check our [CSS Gradient Generator](#).

Hey! You found this booklet interesting? Support Converting Colors with the new Membership Option!

The pro membership hides all ads, plus gives you double the colors in the color bucket, and more awesome pro features!

[Learn more, Memberships starting at \\$2.50/m!](#)

**Follow me
on Twitter!**

@ConvertingColor