

Converting Colors

CIELCh(71, 22.986, 44.930)

Have a look what the booklet for
CIELCh(71, 22.986, 44.930) contains.

CIELCh(71, 23.100, 44.349)	3
<i>Conversions</i>	4
<i>Details</i>	6
<i>Harmonies</i>	11
<i>Previews</i>	20
<i>Color Blindness Simulation</i>	23
<i>CSS Examples</i>	26

Color

CIELCh(71, 23.100, 44.349)

Conversions

Conversions Part 1

Format	Color
Hex	D5A291
RGB	213, 162, 145
RGB Percent	84%, 64%, 57%
CMY	0.1635, 0.3636, 0.4303
CMYK	0.00, 0.24, 0.32, 0.16
HSL	15°, 45%, 70%
HSV	15°, 32%, 84%
XYZ	45.6337, 42.1875, 32.6399
YIQ	175.3110, 35.8530, 5.5250

Conversions

Conversions Part 2

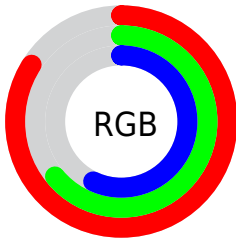
Format	Color
R _Y B	213, 168, 145
Decimal	14000785
CIE Lab	71.00, 16.52, 16.15
CIE LCh	71, 23.100, 44.349
Yxy	42.1875, 0.3788, 0.3502
Android (android.graphics.Color)	4292190865 (0xFFD5A291)
YUV	175.3110, -14.9433, 33.0533
Hunter-Lab	64.9519, 11.7442, 15.6716

Details

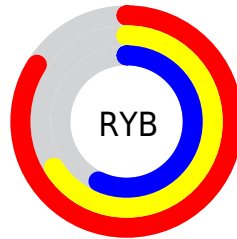
The CIELCh color **71, 23.100, 44.349** is a light color, and the websafe version is hex **CC9999**. A complement of this color would be **76, 18.699, 227.844**, and the grayscale version is **72, 0.009, 296.813**.

A 20% lighter version of the original color is **89, 17.321, 52.609**, and **51, 22.998, 43.475** is the 20% darker color. If you saturate the color by 10%, you get **67, 31.607, 44.278**, and if you desaturate by 10%, it is **75, 15.221, 44.565**.

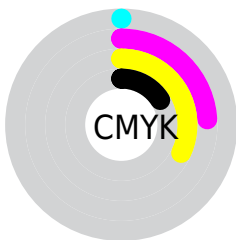
Distribution



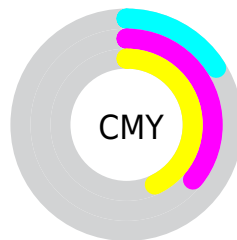
- Red (84%)
- Green (64%)
- Blue (57%)



- Red (84%)
- Yellow (66%)
- Blue (57%)



- Cyan (0%)
- Magenta (24%)
- Yellow (32%)
- Black (16%)



- Cyan (16%)
- Magenta (36%)
- Yellow (43%)

Brightness & Saturation Gradients

These gradients show how the CIELCh color 71, 23.100, 44.349 changes by changing the brightness by 10 percent. The first figure shows a shift by +10% for each color and the second figure -10%.

Similar to the brightness gradients but the following saturation gradients show a change of the CIELCh color 71, 23.100, 44.349 by changing the saturation by 10% instead.

71, 23.100, 44.349

71, 23.100, 44.349

100, 23.100,
44.349

61, 23.100, 44.349

91, 23.100, 44.349

51, 23.100, 44.349

41, 23.100, 44.349

31, 23.100, 44.349

21, 23.100, 44.349

11, 23.100, 44.349

1, 23.100, 44.349

0, 23.100, 44.349

71, 23.100, 44.349

71, 23.100, 44.349

67, 31.607, 44.278

75, 15.221, 44.565

63, 40.744, 44.362

80, 7.941, 44.861

59, 50.445, 44.619

85, 1.212, 44.885

55, 60.516, 45.016

89, 5.023, 225.923

52, 70.499, 45.407

94, 10.818,
226.374

50, 79.370, 45.397

97, 13.952,
198.575

48, 85.069, 44.976

Harmonies

Complementary

The Complementary color scheme is a pair of colors which are on the opposite of each other on the color wheel.



71, 23.100, 44.349



76, 18.699, 227.844

Rectangle

The Rectangle color scheme consists of four colors that form a rectangle on the color wheel.



71, 23.100, 44.349



71, 23.100, 94.349



71, 23.100, 224.349



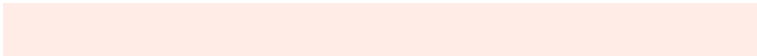
71, 23.100, 274.349

Sweetspot

The Sweet Spot groups the original color and five complimentary colors.



71, 23.099, 44.356



95, 7.665, 44.916



68, 37.112, 334.520



50, 5.259, 44.873



0, 0.000, 0.000



53, 0.007, 296.813

Same Dimension

The Same Dimension uses a secret algorithm to generate beautiful new colors.



71, 23.099, 44.356



80, 32.671, 44.288



80, 27.864, 93.331



43, 3.766, 44.937



38, 71.702, 45.421



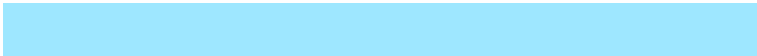
7, 18.868, 33.993

Inverse Universe

The Inverse Universe completely reimagines the original color for something new.



76, 18.699, 227.844



88, 25.139, 228.643



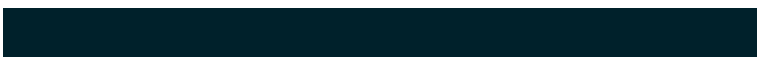
67, 28.514, 281.984



44, 3.564, 226.011



50, 33.839, 245.962



11, 12.785, 236.280

Previews

White Background



This preview shows how the CIELCh color 71, 23.100, 44.349 looks on a white background.

Color Contrast Check

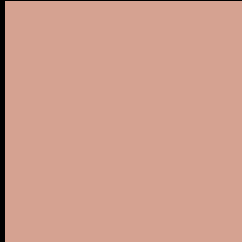
Large Text (above 18pt) WCAG AA × Fail

Any Text WCAG AA × Fail

Large Text (above 18pt) WCAG AAA × Fail

Any Text WCAG AAA × Fail

Black Background



This preview shows how the CIELCh color 71, 23.100, 44.349 looks on a black background.

Color Contrast Check

Large Text (above 18pt) WCAG AA ✓ Pass

Any Text WCAG AA ✓ Pass

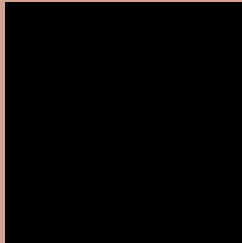
Large Text (above 18pt) WCAG AAA ✓ Pass

Any Text WCAG AAA ✓ Pass

If you want to check with other color combinations, try the [Color Contrast Checker](#).

CIELCh 71, 23.100, 44.349

Background



This preview shows how black text looks on a background with the CIELCh color 71, 23.100, 44.349.

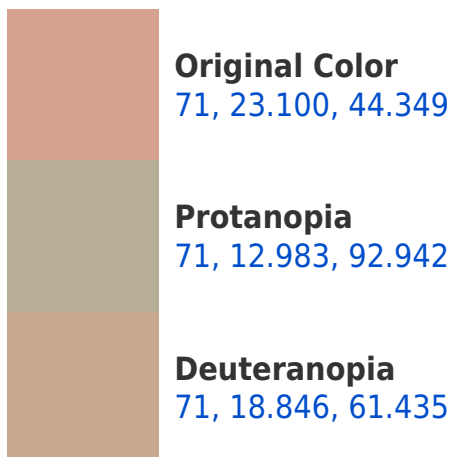


This preview shows how white text looks on a background with the CIELCh color 71, 23.100, 44.349.

Color Blindness Simulation

Color vision deficiency is a very complex topic, and I could not describe the different causes any better than Wikipedia does, so if you want to learn more, you should check out their [article about color blindness](#).

Dichromacy





Tritanopia
71, 23.020, 5.299

Trichromacy



Original Color
71, 23.100, 44.349

Protanomaly
71, 15.021, 68.985

Deuteranomaly
71, 20.161, 54.689

Tritanomaly
71, 21.825, 18.592

Monochromacy



Original Color
71, 23.100, 44.349

Achromatopsia
72, 0.009, 296.813

Achromatomaly
71, 8.069, 43.671

CSS Examples

Text

The CSS property to change the color of the text to CIELCh 71, 23.100, 44.349 is called "color". The color property can be set on classes, ids or directly on the HTML element.

This example shows how text in the color `rgb(213, 162, 145)` looks like.

```
.text, #text, p{  
    color:rgb(213, 162, 145)  
}
```

If you want to add a text shadow in that color use the text-shadow property, you can generate a text shadow directly with our [CSS Text Shadow Generator](#).

Here you see how black text with a 4 pixel rgb(213, 162, 145) colored shadow looks like.

```
.shadow{ text-shadow: 4px 4px 2px rgb(213, 162, 145) }
```

Border

The CSS property to change the border of an element to CIELCh 71, 23.100, 44.349 is called "border". The border property can be set on classes, ids or directly on the HTML element.

This example shows the color as border, it can be applied via the CSS property "border" or "border-color".

```
.border, #border, table{ border:4px solid rgb(213, 162, 145) }
```

If only the border color should be changed use the property `border-color`.

```
.border{ border-color:rgb(213, 162, 145) }
```

If you want to add a box shadow in that color use:

Here you see how a box with a 4 pixel `rgb(213, 162, 145)` colored shadow looks like.

```
.boxshadow{ -moz-box-shadow:4px 4px 4px  
4px rgb(213, 162, 145); -webkit-box-  
shadow:4px 4px 4px 4px rgb(213, 162, 145);  
box-shadow:4px 4px 4px 4px rgb(213, 162,  
145) }
```

Background

The CSS property to change the background color of an element to CIELCh 71, 23.100, 44.349 is called "background". The background property can be set on classes, ids or directly on the HTML element.

```
.background, #background, body{  
background: rgb(213, 162, 145) }
```

If only the background color should be changed can be used:

```
.background{ background-color: rgb(213,  
162, 145) }
```

This example shows the color as background, it is applied via the CSS property "background".

To optimize and compress your CSS code, you can use our [online CSS compressor and optimizer](#) based on csstidy. If you want to create a linear or radial gradient as background or border, check our [CSS Gradient Generator](#).

Hey! You found this booklet interesting? Support Converting Colors with the new Membership Option!

The pro membership hides all ads, plus gives you double the colors in the color bucket, and more awesome pro features!

[Learn more, Memberships starting at \\$2.50/m!](#)

**Follow me
on Twitter!**

@ConvertingColor