

Converting Colors

CIELCh(71, 26.892, 11.283)

Have a look what the booklet for
CIELCh(71, 26.892, 11.283) contains.

CIELCh(71, 26.788, 11.613)	3
<i>Conversions</i>	4
<i>Details</i>	6
<i>Harmonies</i>	11
<i>Previews</i>	20
<i>Color Blindness Simulation</i>	23
<i>CSS Examples</i>	26

Color

CIELCh(71, 26.788, 11.613)

Conversions

Conversions Part 1

Format	Color
Hex	DF9CA5
RGB	223, 156, 165
RGB Percent	87%, 61%, 65%
CMY	0.1254, 0.3882, 0.3529
CMYK	0.00, 0.30, 0.26, 0.13
HSL	352°, 51%, 74%
HSV	352°, 30%, 87%
XYZ	49.1179, 42.1875, 41.1570
YIQ	177.0590, 37.0430, 17.0030

Conversions

Conversions Part 2

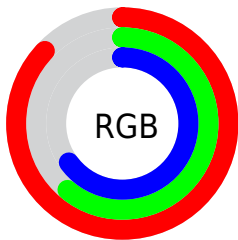
Format	Color
RYB	223, 156, 165
Decimal	14654629
CIELab	71.00, 26.24, 5.39
CIELCh	71, 26.788, 11.613
Yxy	42.1875, 0.3708, 0.3185
Android (android.graphics.Color)	4292844709 (0xFFDF9CA5)
YUV	177.0590, -5.9451, 40.2903
Hunter-Lab	64.9519, 21.3194, 7.8971

Details

The CIELCh color **71, 26.788, 11.613** is a light color, and the websafe version is hex **CC9999**. A complement of this color would be **84, 23.011, 185.861**, and the grayscale version is **72, 0.009, 296.813**.

A 20% lighter version of the original color is **88, 16.837, 4.615**, and **51, 26.630, 11.804** is the 20% darker color. If you saturate the color by 10%, you get **66, 36.564, 13.231**, and if you desaturate by 10%, it is **77, 17.378, 10.310**.

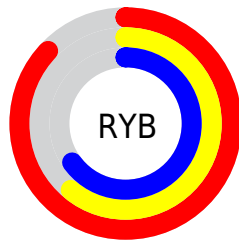
Distribution



Red (87%)

Green (61%)

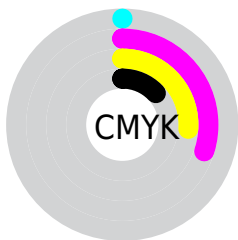
Blue (65%)



Red (87%)

Yellow (61%)

Blue (65%)

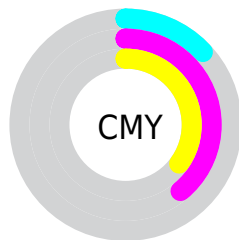


Cyan (0%)

Magenta (30%)

Yellow (26%)

Black (13%)



Cyan (13%)

Magenta (39%)

Yellow (35%)

Brightness & Saturation Gradients

These gradients show how the CIELCh color 71, 26.788, 11.613 changes by changing the brightness by 10 percent. The first figure shows a shift by +10% for each color and the second figure -10%.

Similar to the brightness gradients but the following saturation gradients show a change of the CIELCh color 71, 26.788, 11.613 by changing the saturation by 10% instead.

71, 26.788, 11.613

71, 26.788, 11.613

100, 26.788,
11.613

61, 26.788, 11.613

91, 26.788, 11.613

51, 26.788, 11.613

41, 26.788, 11.613

31, 26.788, 11.613

21, 26.788, 11.613

11, 26.788, 11.613

1, 26.788, 11.613

0, 26.788, 11.613

71, 26.788, 11.613

71, 26.788, 11.613

66, 36.564, 13.231

77, 17.378, 10.310

60, 46.519, 15.259

83, 8.449, 9.212

56, 56.357, 17.837

89, 0.038, 353.216

52, 65.726, 21.102

95, 7.861, 187.714

49, 74.301, 25.141

98, 10.823,
198.784

48, 81.868, 29.846

47, 88.313, 34.555

Harmonies

Complementary

The Complementary color scheme is a pair of colors which are on the opposite of each other on the color wheel.



71, 26.788, 11.613



84, 23.011, 185.861

Rectangle

The Rectangle color scheme consists of four colors that form a rectangle on the color wheel.



71, 26.788, 11.613



71, 26.788, 61.613



71, 26.788, 191.613



71, 26.788, 241.613

Sweetspot

The Sweet Spot groups the original color and five complimentary colors.



71, 26.786, 11.617



94, 8.417, 9.111



72, 41.417, 321.667



49, 5.875, 9.263



0, 0.000, 0.000



53, 0.007, 296.813

Same Dimension

The Same Dimension uses a secret algorithm to generate beautiful new colors.



71, 26.786, 11.617



76, 36.343, 12.580



76, 21.820, 55.297



44, 4.793, 9.151



37, 73.333, 33.743



6, 25.309, 15.268

Inverse Universe

The Inverse Universe completely reimagines the original color for something new.



71, 26.786, 11.617



76, 36.343, 12.580



78, 18.575, 241.425



44, 4.793, 9.151



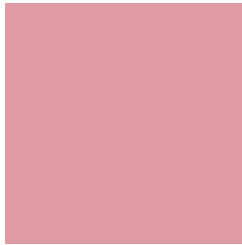
37, 73.333, 33.743



6, 25.309, 15.268

Previews

White Background



This preview shows how the CIELCh color 71, 26.788, 11.613 looks on a white background.

Color Contrast Check

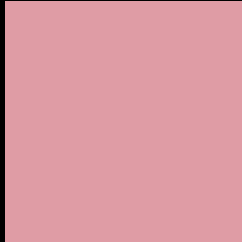
Large Text (above 18pt) WCAG AA × Fail

Any Text WCAG AA × Fail

Large Text (above 18pt) WCAG AAA × Fail

Any Text WCAG AAA × Fail

Black Background



This preview shows how the CIE LCh color 71, 26.788, 11.613 looks on a black background.

Color Contrast Check

Large Text (above 18pt) WCAG AA ✓ Pass

Any Text WCAG AA ✓ Pass

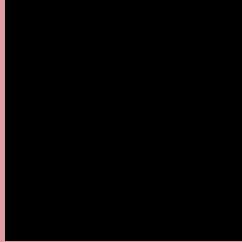
Large Text (above 18pt) WCAG AAA ✓ Pass

Any Text WCAG AAA ✓ Pass

If you want to check with other color combinations, try the [Color Contrast Checker](#).

CIELCh 71, 26.788, 11.613

Background



This preview shows how black text looks on a background with the CIELCh color 71, 26.788, 11.613.

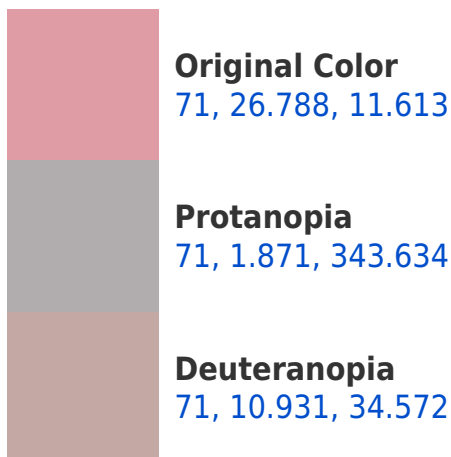


This preview shows how white text looks on a background with the CIELCh color 71, 26.788, 11.613.

Color Blindness Simulation

Color vision deficiency is a very complex topic, and I could not describe the different causes any better than Wikipedia does, so if you want to learn more, you should check out their [article about color blindness](#).

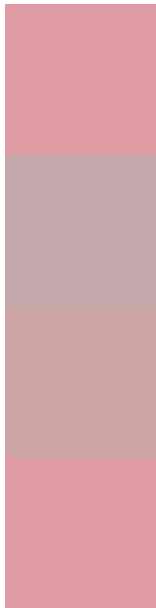
Dichromacy





Tritanopia
71, 26.877, 9.328

Trichromacy



Original Color
71, 26.788, 11.613

Protanomaly
71, 10.609, 8.524

Deuteranomaly
71, 16.125, 20.827

Tritanomaly
71, 26.827, 10.469

Monochromacy



Original Color
71, 26.788, 11.613

Achromatopsia
72, 0.009, 296.813

Achromatomaly
71, 9.823, 7.494

CSS Examples

Text

The CSS property to change the color of the text to CIELCh 71, 26.788, 11.613 is called "color". The color property can be set on classes, ids or directly on the HTML element.

This example shows how text in the color `rgb(223, 156, 165)` looks like.

```
.text, #text, p{  
    color:rgb(223, 156, 165)  
}
```

If you want to add a text shadow in that color use the text-shadow property, you can generate a text shadow directly with our [CSS Text Shadow Generator](#).

Here you see how black text with a 4 pixel rgb(223, 156, 165) colored shadow looks like.

```
.shadow{ text-shadow: 4px 4px 2px rgb(223, 156, 165) }
```

Border

The CSS property to change the border of an element to CIELCh 71, 26.788, 11.613 is called "border". The border property can be set on classes, ids or directly on the HTML element.

This example shows the color as border, it can be applied via the CSS property "border" or "border-color".

```
.border, #border, table{ border:4px solid rgb(223, 156, 165) }
```

If only the border color should be changed use the property `border-color`.

```
.border{ border-color:rgb(223, 156, 165) }
```

If you want to add a box shadow in that color use:

Here you see how a box with a 4 pixel `rgb(223, 156, 165)` colored shadow looks like.

```
.boxshadow{ -moz-box-shadow:4px 4px 4px  
4px rgb(223, 156, 165); -webkit-box-  
shadow:4px 4px 4px 4px rgb(223, 156, 165);  
box-shadow:4px 4px 4px 4px rgb(223, 156,  
165) }
```

Background

The CSS property to change the background color of an element to CIELCh 71, 26.788, 11.613 is called "background". The background property can be set on classes, ids or directly on the HTML element.

```
.background, #background, body{  
background: rgb(223, 156, 165) }
```

If only the background color should be changed can be used:

```
.background{ background-color: rgb(223,  
156, 165) }
```

This example shows the color as background, it is applied via the CSS property "background".

To optimize and compress your CSS code, you can use our [online CSS compressor and optimizer](#) based on csstidy. If you want to create a linear or radial gradient as background or border, check our [CSS Gradient Generator](#).

Hey! You found this booklet interesting? Support Converting Colors with the new Membership Option!

The pro membership hides all ads, plus gives you double the colors in the color bucket, and more awesome pro features!

[Learn more, Memberships starting at \\$2.50/m!](#)

**Follow me
on Twitter!**

@ConvertingColor