

Converting Colors

CIELCh(71, 29.160, 61.706)

Have a look what the booklet for
CIELCh(71, 29.160, 61.706) contains.

CIELCh(71, 29.244, 61.901)	3
<i>Conversions</i>	4
<i>Details</i>	6
<i>Harmonies</i>	11
<i>Previews</i>	20
<i>Color Blindness Simulation</i>	23
<i>CSS Examples</i>	26

Color

CIELCh(71, 29.244, 61.901)

Conversions

Conversions Part 1

Format	Color
Hex	D6A480
RGB	214, 164, 128
RGB Percent	84%, 64%, 50%
CMY	0.1625, 0.3584, 0.4995
CMYK	0.00, 0.23, 0.40, 0.16
HSL	25°, 51%, 67%
HSV	25°, 40%, 84%
XYZ	44.6806, 42.1875, 26.0774
YIQ	174.8460, 41.3560, -0.5960

Conversions

Conversions Part 2

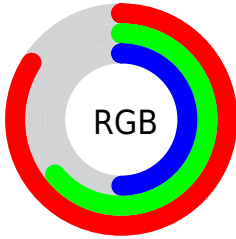
Format	Color
R _Y B	214, 190, 128
Decimal	14066816
CIE Lab	71.00, 13.77, 25.80
CIE LCh	71, 29.244, 61.901
Yxy	42.1875, 0.3956, 0.3735
Android (android.graphics.Color)	4292256896 (0xFFD6A480)
YUV	174.8460, -23.0951, 34.3381
Hunter-Lab	64.9519, 9.1249, 21.6621

Details

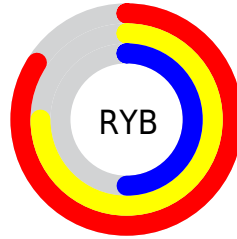
The CIELCh color **71, 29.244, 61.901** is a light color, and the websafe version is hex **CC9966**. A complement of this color would be **70, 24.519, 252.572**, and the grayscale version is **71, 0.009, 296.813**.

A 20% lighter version of the original color is **90, 24.368, 73.173**, and **51, 29.266, 62.213** is the 20% darker color. If you saturate the color by 10%, you get **68, 37.641, 60.922**, and if you desaturate by 10%, it is **74, 21.305, 62.921**.

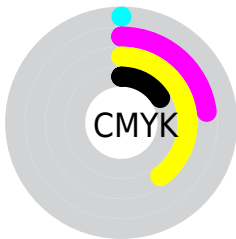
Distribution



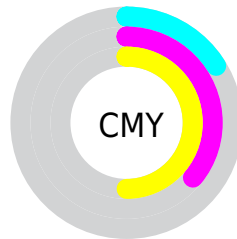
- Red (84%)
- Green (64%)
- Blue (50%)



- Red (84%)
- Yellow (75%)
- Blue (50%)



- Cyan (0%)
- Magenta (23%)
- Yellow (40%)
- Black (16%)



- Cyan (16%)
- Magenta (36%)
- Yellow (50%)

Brightness & Saturation Gradients

These gradients show how the CIELCh color 71, 29.244, 61.901 changes by changing the brightness by 10 percent. The first figure shows a shift by +10% for each color and the second figure -10%.

Similar to the brightness gradients but the following saturation gradients show a change of the CIELCh color 71, 29.244, 61.901 by changing the saturation by 10% instead.

71, 29.244, 61.901

71, 29.244, 61.901

100, 29.244,
61.901

61, 29.244, 61.901

91, 29.244, 61.901

51, 29.244, 61.901

41, 29.244, 61.901

31, 29.244, 61.901

21, 29.244, 61.901

11, 29.244, 61.901

1, 29.244, 61.901

0, 29.244, 61.901

71, 29.244, 61.901

71, 29.244, 61.901

68, 37.641, 60.922

74, 21.305, 62.921

64, 46.432, 59.955

78, 13.828, 63.955

61, 55.434, 58.957

82, 6.789, 64.984

58, 64.222, 57.797

85, 0.152, 63.145

56, 71.947, 56.189

89, 6.125, 247.252

53, 77.743, 54.021

93, 11.808,
246.909

96, 12.513,
209.343

97, 13.869,
198.581

Harmonies

Complementary

The Complementary color scheme is a pair of colors which are on the opposite of each other on the color wheel.



71, 29.244, 61.901



70, 24.519, 252.572

Rectangle

The Rectangle color scheme consists of four colors that form a rectangle on the color wheel.



71, 29.244, 61.901



71, 29.244, 111.901



71, 29.244, 241.901



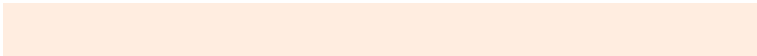
71, 29.244, 291.901

Sweetspot

The Sweet Spot groups the original color and five complimentary colors.



71, 29.244, 61.907



95, 9.234, 64.795



64, 41.781, 342.999



50, 6.149, 64.660



0, 0.000, 0.000



53, 0.007, 296.813

Same Dimension

The Same Dimension uses a secret algorithm to generate beautiful new colors.



71, 29.244, 61.907



80, 41.303, 61.093



82, 40.972, 102.379



43, 3.761, 65.066



43, 65.523, 54.638



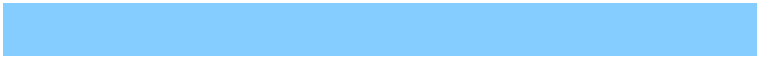
9, 17.273, 49.741

Inverse Universe

The Inverse Universe completely reimagines the original color for something new.



70, 24.519, 252.572



79, 33.213, 254.612



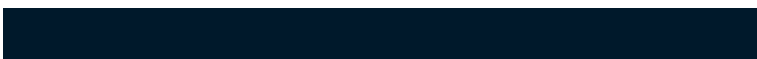
59, 44.669, 292.317



43, 3.634, 247.310



41, 45.114, 274.541



8, 15.241, 263.398

Previews

White Background



This preview shows how the CIELCh color 71, 29.244, 61.901 looks on a white background.

Color Contrast Check

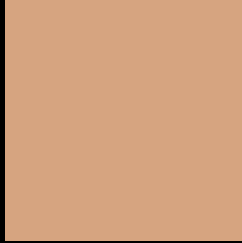
Large Text (above 18pt) WCAG AA × Fail

Any Text WCAG AA × Fail

Large Text (above 18pt) WCAG AAA × Fail

Any Text WCAG AAA × Fail

Black Background



This preview shows how the CIELCh color 71, 29.244, 61.901 looks on a black background.

Color Contrast Check

Large Text (above 18pt) WCAG AA ✓ Pass

Any Text WCAG AA ✓ Pass

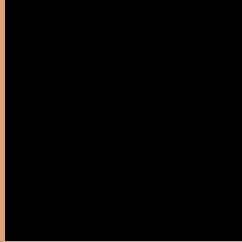
Large Text (above 18pt) WCAG AAA ✓ Pass

Any Text WCAG AAA ✓ Pass

If you want to check with other color combinations, try the [Color Contrast Checker](#).

CIELCh 71, 29.244, 61.901

Background



This preview shows how black text looks on a background with the CIELCh color 71, 29.244, 61.901.



This preview shows how white text looks on a background with the CIELCh color 71, 29.244, 61.901.

Color Blindness Simulation

Color vision deficiency is a very complex topic, and I could not describe the different causes any better than Wikipedia does, so if you want to learn more, you should check out their [article about color blindness](#).

Dichromacy



Original Color

71, 29.244, 61.901

Protanopia

71, 23.267, 95.612

Deuteranopia

71, 27.547, 71.292



Tritanopia

71, 24.189, 6.247

Trichromacy



Original Color
71, 29.244, 61.901

Protanomaly
71, 24.390, 81.564

Deuteranomaly
71, 28.261, 68.017

Tritanomaly
71, 22.780, 28.171

Monochromacy



Original Color
71, 29.244, 61.901

Achromatopsia
71, 0.009, 296.813

Achromatomaly
71, 10.036, 64.434

CSS Examples

Text

The CSS property to change the color of the text to CIELCh 71, 29.244, 61.901 is called "color". The color property can be set on classes, ids or directly on the HTML element.

This example shows how text in the color `rgb(214, 164, 128)` looks like.

```
.text, #text, p{  
    color:rgb(214, 164, 128)  
}
```

If you want to add a text shadow in that color use the text-shadow property, you can generate a text shadow directly with our [CSS Text Shadow Generator](#).

Here you see how black text with a 4 pixel rgb(214, 164, 128) colored shadow looks like.

```
.shadow{ text-shadow: 4px 4px 2px rgb(214, 164, 128) }
```

Border

The CSS property to change the border of an element to CIELCh 71, 29.244, 61.901 is called "border". The border property can be set on classes, ids or directly on the HTML element.

This example shows the color as border, it can be applied via the CSS property "border" or "border-color".

```
.border, #border, table{ border:4px solid rgb(214, 164, 128) }
```

If only the border color should be changed use the property `border-color`.

```
.border{ border-color:rgb(214, 164, 128) }
```

If you want to add a box shadow in that color use:

Here you see how a box with a 4 pixel `rgb(214, 164, 128)` colored shadow looks like.

```
.boxshadow{ -moz-box-shadow:4px 4px 4px  
4px rgb(214, 164, 128); -webkit-box-  
shadow:4px 4px 4px 4px rgb(214, 164, 128);  
box-shadow:4px 4px 4px 4px rgb(214, 164,  
128) }
```

Background

The CSS property to change the background color of an element to CIELCh 71, 29.244, 61.901 is called "background". The background property can be set on classes, ids or directly on the HTML element.

```
.background, #background, body{  
background: rgb(214, 164, 128) }
```

If only the background color should be changed can be used:

```
.background{ background-color: rgb(214,  
164, 128) }
```

This example shows the color as background, it is applied via the CSS property "background".

To optimize and compress your CSS code, you can use our [online CSS compressor and optimizer](#) based on csstidy. If you want to create a linear or radial gradient as background or border, check our [CSS Gradient Generator](#).

Hey! You found this booklet interesting? Support Converting Colors with the new Membership Option!

The pro membership hides all ads, plus gives you double the colors in the color bucket, and more awesome pro features!

[Learn more, Memberships starting at \\$2.50/m!](#)

**Follow me
on Twitter!**

@ConvertingColor